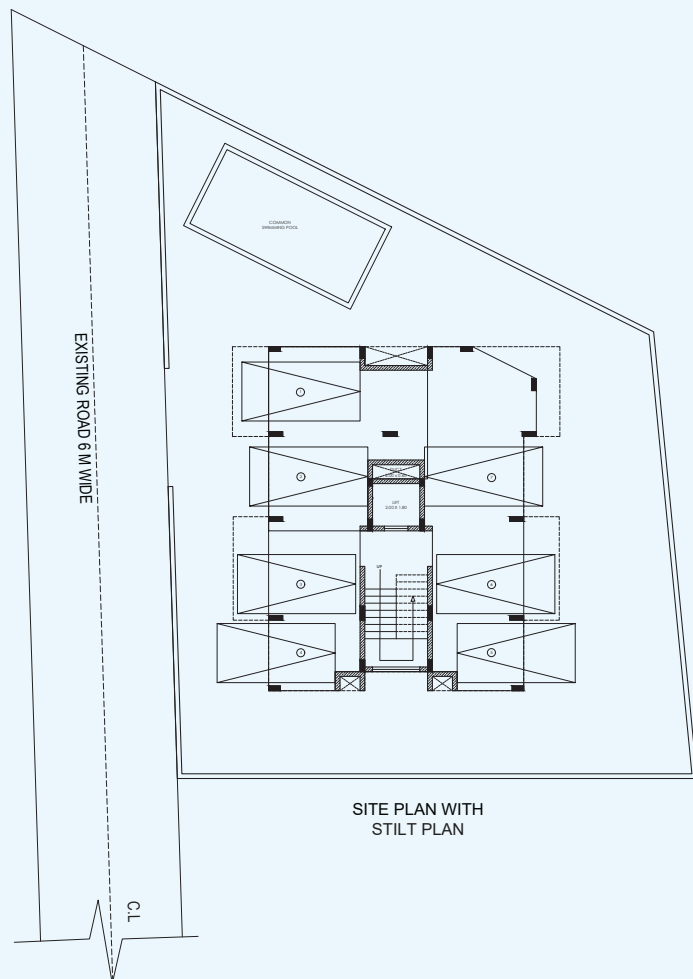


Actual View

Edcon Crown is a project of exclusive 3 Bedroom Luxury Apartments with high-end specifications. Each apartment is equipped with 3 en-suite bedrooms, and a large living room with a dining room, adjoining the kitchen. The apartment is spacious at 184 sq. mts. and the bar lounge/library room is the ideal space to chill out. Other amenities include a dedicated car park in the stilt, a swimming pool, washrooms for staff, 24-hours security with CCTV, and generator back-up for all the apartments.

An apartment at Edcon Crown serves as an excellent investment, because the Goa Convention Centre is coming up less than 500 meters away.

Master Plan



Specifications

The Structure:

It is a R.C.C. framed structure of columns, beams and slabs. The internal partition walls will be of 4 1/2" brick masonry and the external walls will be 9" brick/laterite masonry.

Plaster:

External plaster will be double coat sand faced cement plaster. Internal plaster will be single coat with second coat of neeru.

Flooring:

The flooring will be of vitrified ceramic tiles. The basic cost of the vitrified/ceramic tiles is Rs. 800/- per sq.mts. Toilet floor will have iceramic matt tiles and dado will have ivglazed tiles. The basic cost of the toilet floor and dado tiles is Rs. 500/- per sq.m.

Door:

Main Door- Teak Wood Frame with Teak Wood Door

Internal Door- Teakwood Frames/flush door with laminates. All doors will be with required Indian Standard locksets.

Windows:

Windows will have anodized aluminum sliding windows with glass. Toilets Ventilators will be of anodized aluminum louver

External Décor:

External walls will be painted with external emulsion paint/external apex paint.

Kitchen:

Kitchen will be provided with granite platform with stainless steel sink & dado of two feet height of ceramic tiles

Internal Décor:

The walls and ceilings will be painted with plastic emulsion.

Water Tanks:

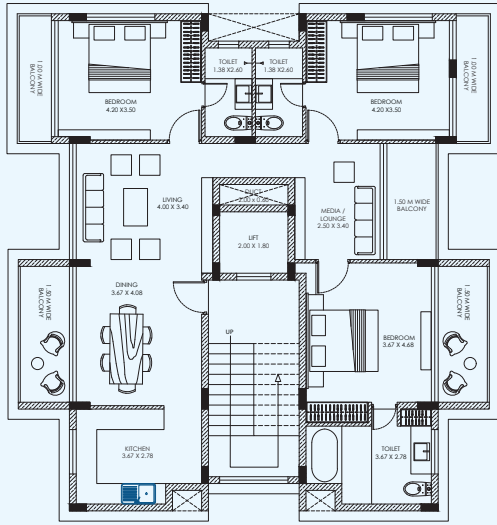
A common underground sump with a common electric pump and a common overhead sump tank will be provided.

Plumbing & Sanitary:

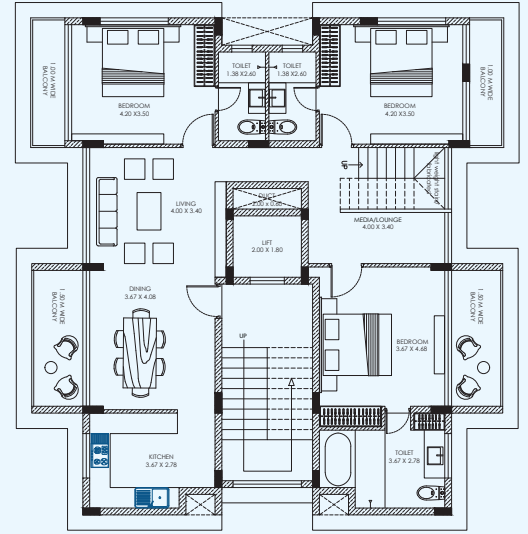
Soil, waste and water pipes will be partially concealed. White glazed European W.C units will be provided with flushing system. The sanitary installation will be in accordance with municipal specifications.



Floor Plans



SECOND FLOOR PLAN



THIRD FLOOR PLAN

Location Map

The project is located on the Nagali hills in Dona Paula. All the apartments enjoy a scenic view of the Caranzalem beach along with the river.

