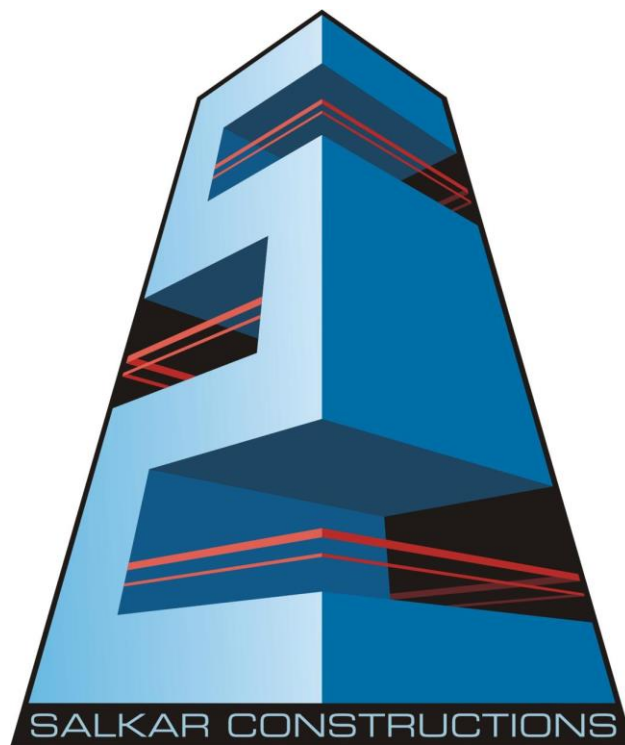


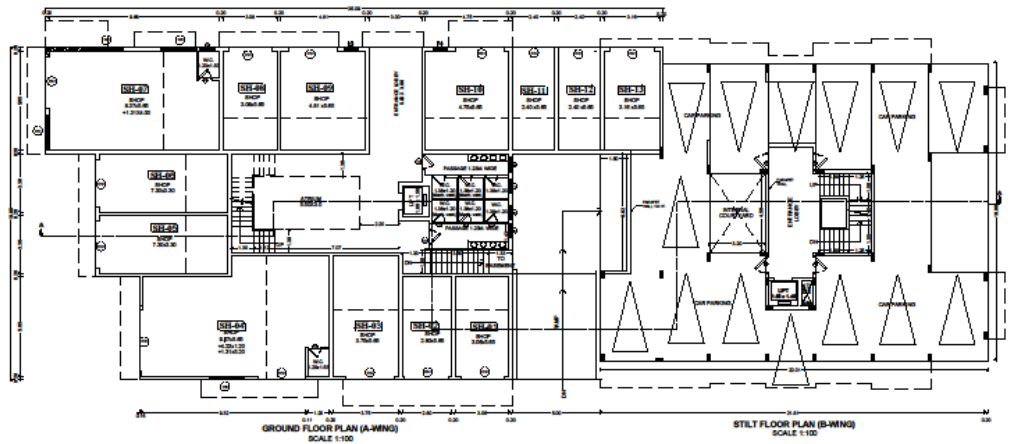
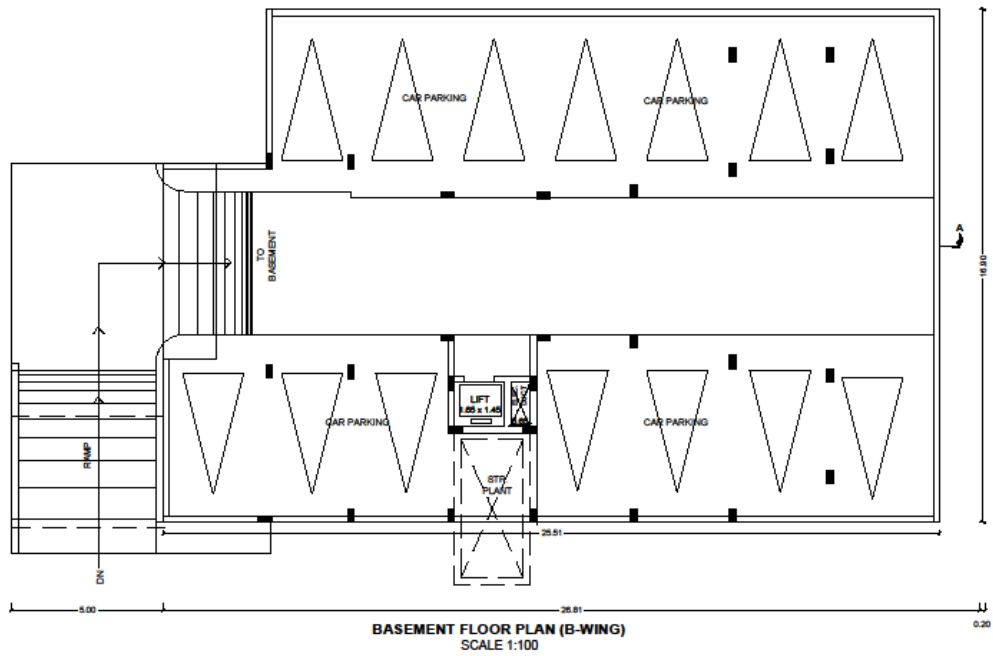
“SALKAR ROYAL ENCLAVE”

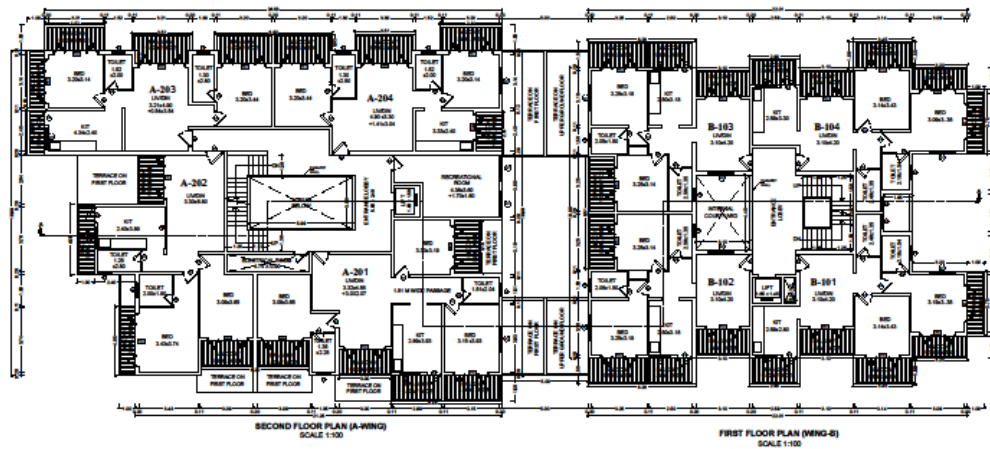
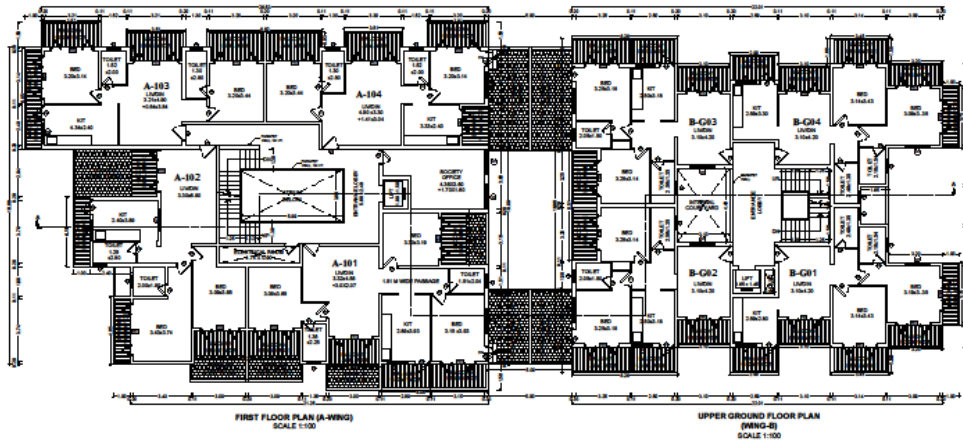
Project by M/S. Salkar Constructions, Bicholim Goa

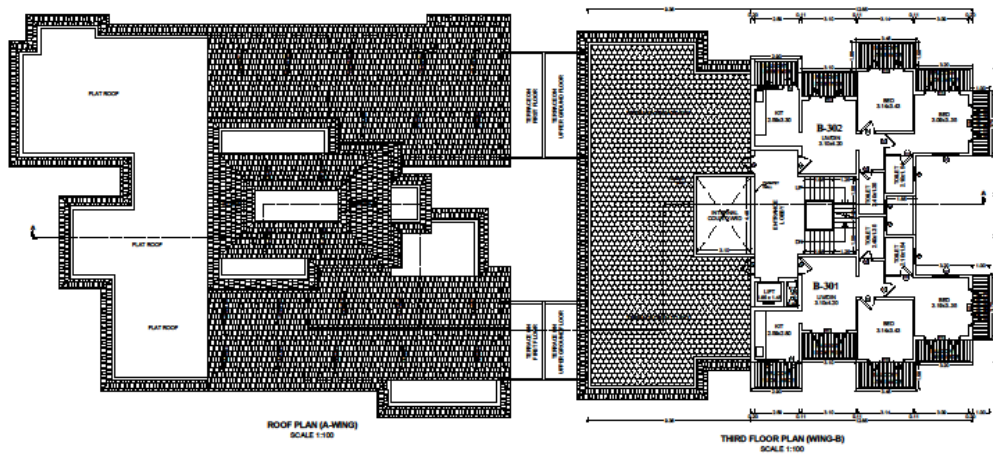
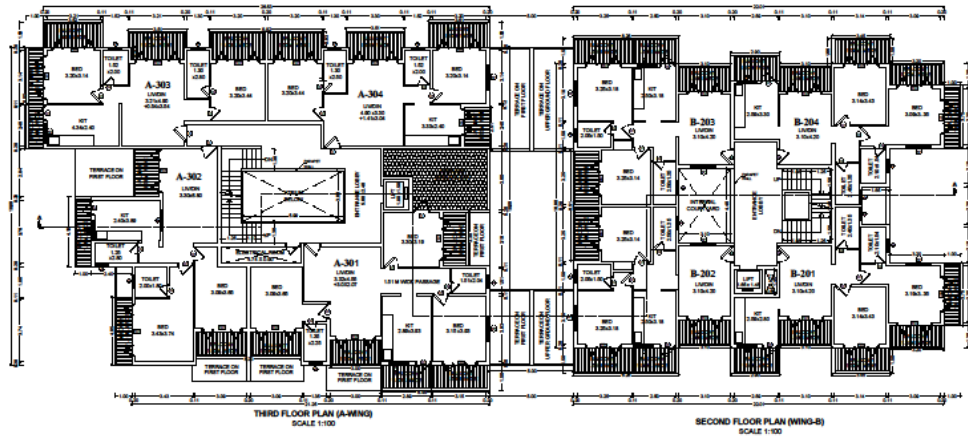


For Bookings contact

9850462374







CARPET AREA OF A-WING SHOPS		
GROUND FLOOR AREA		
SR. No	Type	Carpet Area
1	SH-01	17.30
2	SH-02	15.79
3	SH-03	25.69
4	SH-04	66.40
5	SH-05	24.09
6	SH-06	24.09
7	SH-07	54.67
8	SH-08	17.41
9	SH-09	27.15
10	SH-10	26.82
11	SH-11	13.55
12	SH-12	13.55
13	SH-13	17.83

AREA BLOCK - A		
SR.NO.	TYPE	CARPET AREA
FIRST FLOOR		
101	3 BHK	83.75
102	2 BHK	69.50
103	2 BHK	61.09
104	2 BHK	59.48
SECOND FLOOR		
201	3 BHK	83.75
202	2 BHK	69.50
203	2 BHK	61.09
204	2 BHK	59.48

THIRD FLOOR		
301	3 BHK	83.75
302	2 BHK	69.50
303	2 BHK	61.09
304	2 BHK	59.48

AREA BLOCK B		
SR.NO.	TYPE	CARPET AREA
UPPER GROUND FLOOR		
G01	2 BHK	54.98
G02	2 BHK	56.58
G03	2 BHK	56.59
G04	2 BHK	56.45
FIRST FLOOR		
101	2 BHK	54.98
102	2 BHK	56.58
103	2 BHK	56.59
104	2 BHK	56.45
SECOND FLOOR		
201	2 BHK	54.98
202	2 BHK	56.58
203	2 BHK	56.59
204	2 BHK	56.45

THIRD FLOOR		
301	2 BHK	54.98
302	2 BHK	56.45

Specification of of Shop

- 800 X 800 mm vitrified tiles in living room and all the bedrooms.
- Double Height shutter.
- Standard white care putty with internal paint with emulsion Finish.
- Electrical
4 nos light points, 2 nos plug points, 2 nos fan point, , 1 no 15 amps point in.
- Provision for inverter.

Specification of of flat

- kitchen with granite top.
- 800 X 800 mm vitrified tiles in living room and all the bedrooms.
- 12 X 18 inch full height tiles for toilet.
- Main door will be flush door with veneer paneling on both the sides or teak wood door.
- Standard white care putty with internal paint with emulsion Finish.
- On Roof sloping Slab will be covered with fabricated sheets and flat slab with proper water proofing
- Standard company Bathroom Fittings.
- Aluminum or UPVC windows.
- Electrical
4 nos light points, 2 nos plug points, 2 nos fan point, and TV & Telephone point, 1 no 15 amps point in living room.
2 light points, 2 nos of 5 amps, 1 Fan point, TV point, 1 nos 15 amps point in each bedroom.
Provision for internet in living and all bedrooms.
Provision for inverter.

Mode of Payment for Shops

- 20% at the time of Booking.
- 10 % on completion of plinth.
- 10% on completion of stilt floor slab.
- 10% on completion of first floor slab
- 10% on completion of second floor slab
- 10% on completion of third floor slab.
- 10% on completion of masonry work, internal plaster, external plaster and fixing of Shutters.
- 10% on completion of internal putty, tiles and electrical.
- 10% at the time of possession.

Mode of Payment for Flats

- 20% at the time of Booking.
- 10 % on completion of plinth.
- 10% on completion of stilt floor slab.
- 10% on completion of first floor slab
- 10% on completion of second floor slab
- 10% on completion of third floor slab.
- 10% on completion of masonry work, internal plaster, external plaster and fixing of door frame.
- 10% on completion of internal putty, tiles and electrical and sanitary fittings.
- 10% at the time of possession.

DESIGN CONSULTANTS :

NEEVH CONSULTANTS ARCHITECT & ENGINEERS

T-8, Block-1, 'JAIRAM COMPLEX', NEUGI NAGAR, PANAJI – GOA, PIN:403001

PH. NO. 0832-2436199