

# ARVIND

*The perfect blend of  
Luxury & Affordability!*

Mahalaxmi Developers bring you 'ARVIND' a purely residential scheme of spacious two bedroom apartments at Tisk - Ponda - Goa.

Ideally located, the homes are situated in the heart of the city, close to markets, shopping places, hospitals, schools, colleges and all urban amenities and conveniences essential to everyday living.

Be a part of 'ARVIND', the perfect choice for you and your family and an excellent investment for the future!





# Superior Amenities that are class apart

- Designer Elevator with backup generator
- Designer staircases
- Covered car parking in stilts
- Under Ground & Overhead water tanks for ample water supply
- Compound wall on three sides



## Specifications

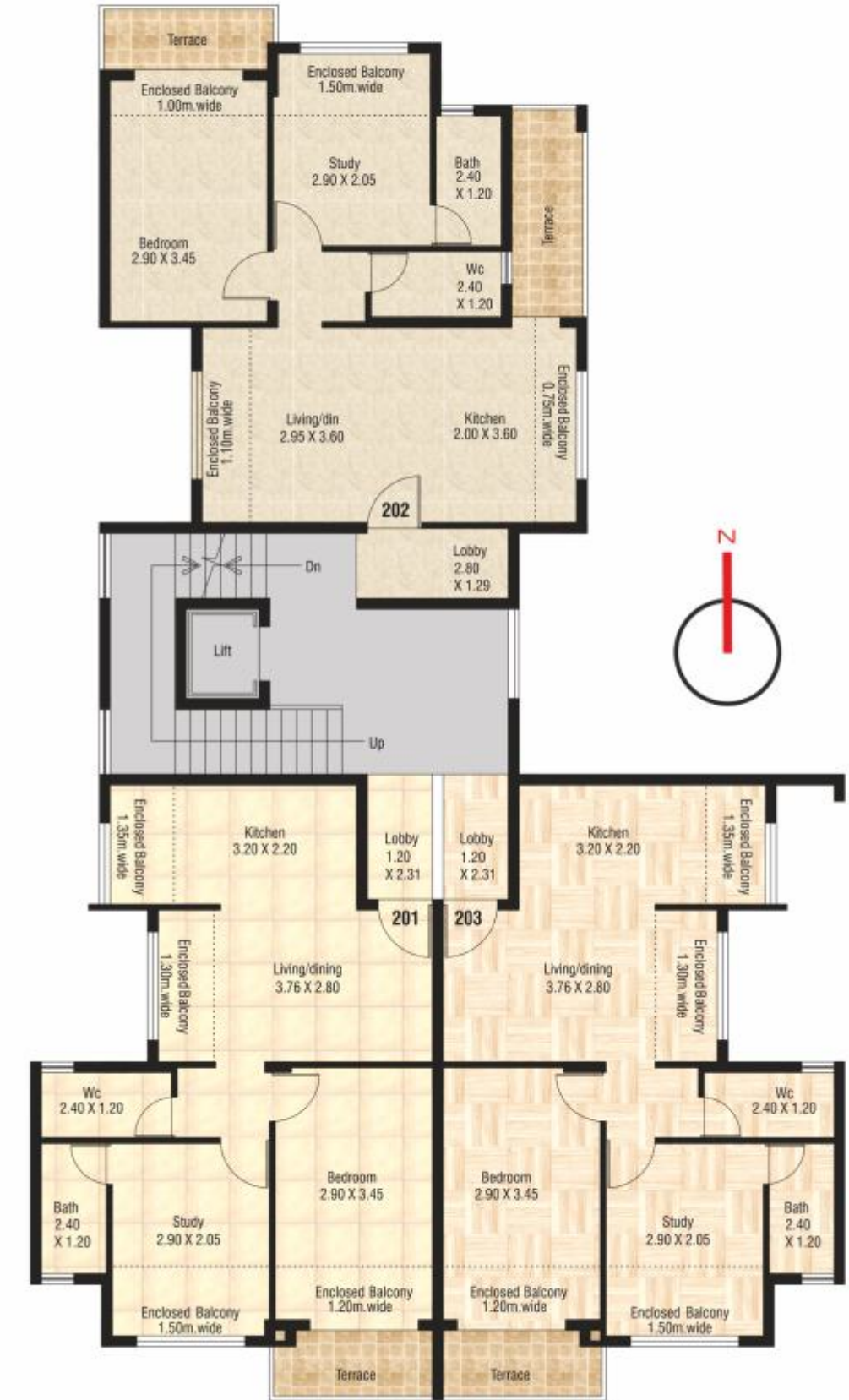
- Vitrified flooring in entire flat except toilets
- Designer toilets along with designer tiles in toilet
- Reputed make S.S bathroom fixtures
- Hindware / Cera / Jaquar make sanitary ware
- Anchor/Finolex or equivalent make concealed copper wiring
- 3 Phase electricity connection
- Hot and Cold water system in toilets
- Internal designer shutters
- Designer entrance door with Europa night latch
- Modular switches
- Aluminium sliding windows with powder coating
- Provision for Internet & Phone
- Provision for Invertor Wiring



UPPER GROUND FLOOR PLAN

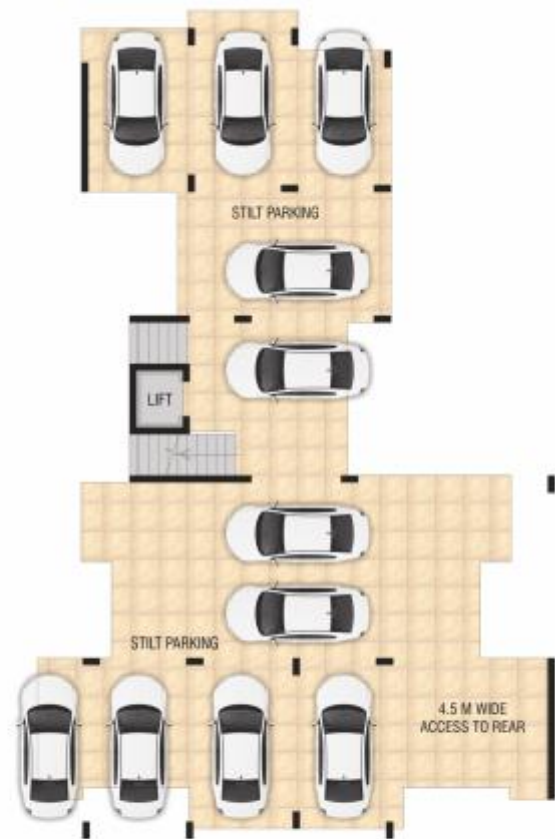


FIRST & THIRD FLOOR PLAN



SECOND FLOOR PLAN





LOCATION MAP



FOR BOOKINGS CONTACT



E-2, Mitasu Manor, near ZAO, Ponda - Goa  
 Ms. Gauri - +91 83297 65285

Architects : Ulysis - Panjim, Goa  
 Structural engineer: Prakash S.P Lawande - Ponda, Goa  
 Legal advisor: Adv. Nandan Kamat Helekar