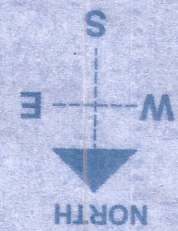
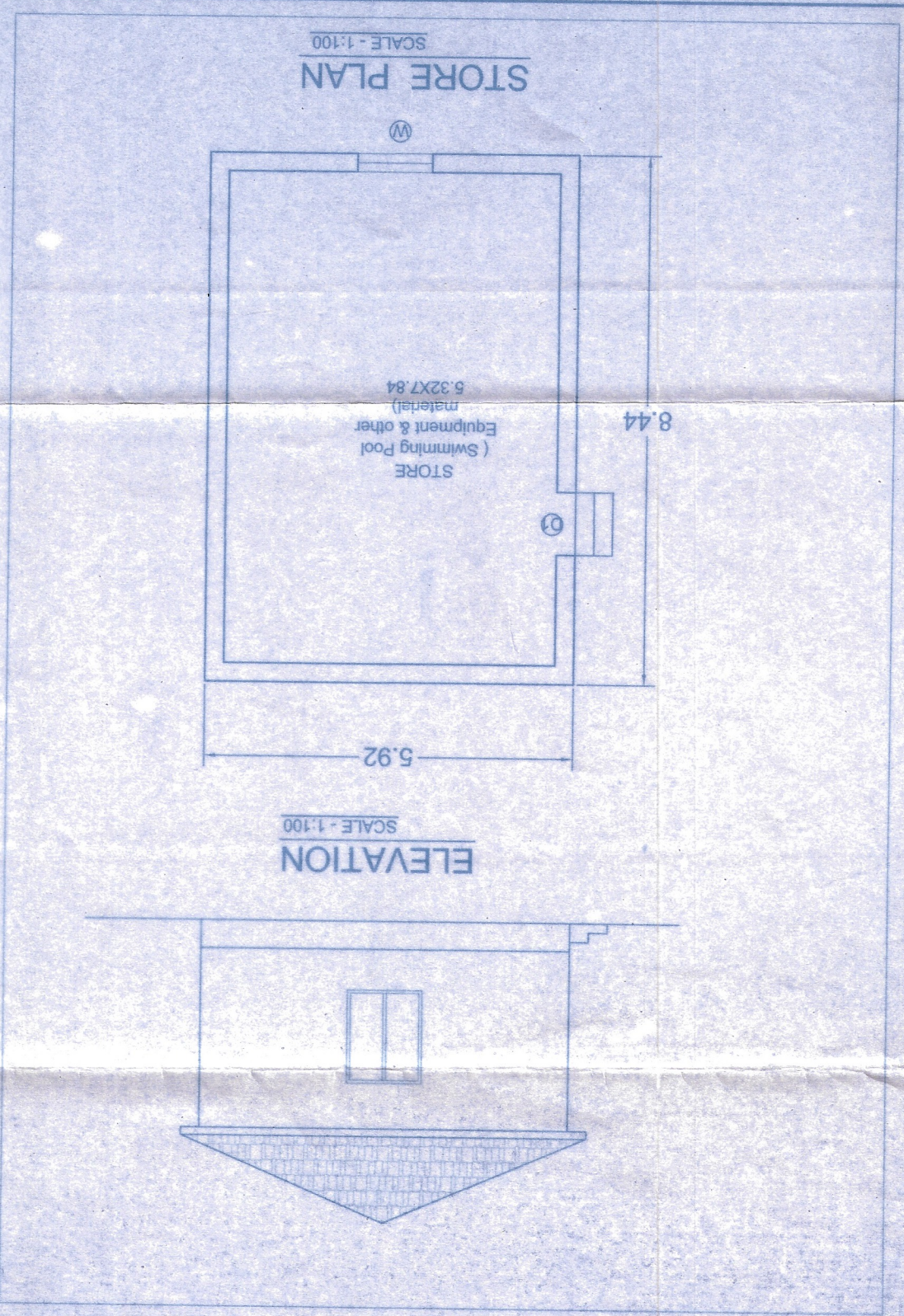


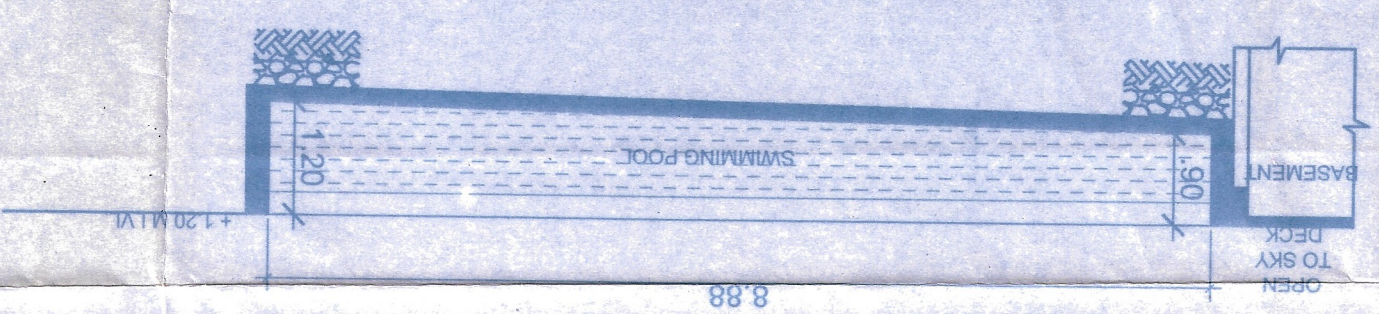
**SITE PLAN**  
SCALE - 1:500



Approved with condition vide  
L.No.: TPU/3951/BSSG/2018/81  
Dy. Town Planner  
Town & County Planning Dept.  
Govt. of Goa, Mapusa



**SECTION TT OF SWIMMING POOL**  
(SCALE - 1:100)



**AREA STATEMENT**

1) TOTAL AREA OF THE PLOT	4125.00 m <sup>2</sup>
2) AREA UNDER SETTLEMENT ZONE	3995.00 m <sup>2</sup>
3) AREA UNDER NO DEVELOPMENT SLOPE	130.00 m <sup>2</sup>
4) NET AREA OF THE PLOT	3995.00 m <sup>2</sup>
5) PROPOSED COVERED AREA ON GROUND	137.13 m <sup>2</sup>
HOUSE A	102.41 m <sup>2</sup>
HOUSE B	105.38 m <sup>2</sup>
HOUSE C	104.99 m <sup>2</sup>
HOUSE D	159.17 m <sup>2</sup>
HOUSE E	185.83 m <sup>2</sup>
HOUSE F	116.51 m <sup>2</sup>
HOUSE G	124.50 m <sup>2</sup>
HOUSE H	50.00 m <sup>2</sup>
STORE I	1085.92 m <sup>2</sup>
6) TOTAL COVERED AREA	1089.92 m <sup>2</sup>
7) COVERAGE CONSUMED	27.18 %
8) FLOOR AREAS FOR F.A.R.	
a) GROUND FLOOR AREA	
HOUSE A	118.88 m <sup>2</sup>
HOUSE B	86.17 m <sup>2</sup>
HOUSE C	88.45 m <sup>2</sup>
HOUSE D	94.64 m <sup>2</sup>
HOUSE E	145.87 m <sup>2</sup>
HOUSE F	175.51 m <sup>2</sup>
HOUSE G	99.65 m <sup>2</sup>
HOUSE H	115.00 m <sup>2</sup>
STORE I	50.00 m <sup>2</sup>
b) FIRST FLOOR AREA	974.17 m <sup>2</sup>
HOUSE A	118.88 m <sup>2</sup>
HOUSE B	86.17 m <sup>2</sup>
HOUSE C	88.45 m <sup>2</sup>
HOUSE D	84.16 m <sup>2</sup>
HOUSE E	145.87 m <sup>2</sup>
HOUSE F	175.51 m <sup>2</sup>
HOUSE G	99.65 m <sup>2</sup>
HOUSE H	115.00 m <sup>2</sup>
9) TOTAL FLOOR AREA FOR F.A.R.	1887.86 m <sup>2</sup>
10) F.A.R. CONSUMED	47.25 %
11) TOTAL BUILT UP AREA FOR INFRASTRUCTURE TEX (VER+ BAL+STAIRCASE)	2087.39 m <sup>2</sup>
12) SWIMMING POOL AREA	399.00 m <sup>2</sup>
<b>TOTAL</b>	<b>1887.86 m<sup>2</sup></b>

**SCHEDULE FOR DOORS & WINDOWS**

TYPE	SIZE	TYPE	SIZE
D	1.22X2.15	W	1.22X1.50
D1	1.00X2.15	W1	1.22X1.10
D2	0.80X2.15		

**IN ASSOCIATION WITH:**  
starchitecture  
15, Jenkinshe, Henryrd,  
Colaba, Mumbai

**SIGN OF ENGINEER**  
DATAPRASAD S. KHALAP  
BE (CIVIL)  
CONSULTING ENGINEER  
TCP/Regd No: SE/25

**SIGN OF OWNER - P.A.H.**

**PROPOSED CONSTRUCTION OF HOUSES AND SWIMMING POOL ON PLOT BEARING SURVEY NO. 117/1 AT ASSAGAO VILLAGE, BARDEZ TALUKA, GOA.**  
ISPRVA  
FOR - ISPRAVA VESTA PVT. LTD.

**REMARKS**  
Approved with conditions vide  
R. No. dt. 11/11/18  
Secretary  
Village Council, Assagao  
Bardez - Goa.