



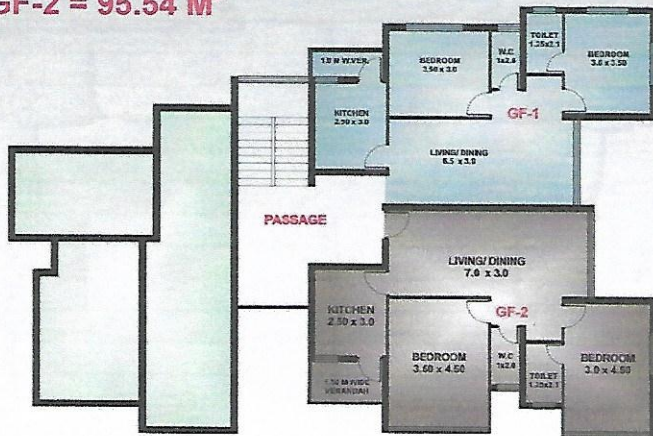
Greystone
Fieldview Residency



Dialgona Talaulim Navelim

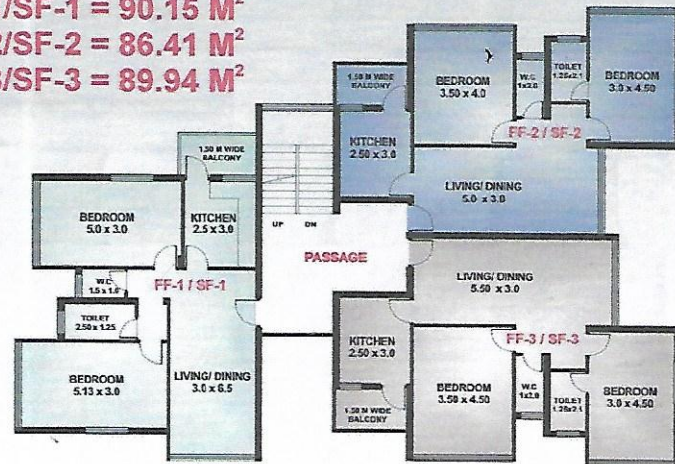
FLOOR PLANS

GF-1 = 83.55 M²
GF-2 = 95.54 M²



GROUND FLOOR PLAN

FF-1/SF-1 = 90.15 M²
FF-2/SF-2 = 86.41 M²
FF-3/SF-3 = 89.94 M²



TYPICAL FIRST & SECOND FLOOR PLAN

SPECIFICATIONS

R.C.C structure with laterite/brick masonry walls

Main door- Teak wood doors and lal wood frames

Internal doors- Painted flush door shutter / FRP door with hardwood Frame

External windows- Powder coated aluminum

Kitchen with counter in granite, stainless steel single bowl drain board sink, upto 60 cms of tiles from platform

Vitrified Flooring

Bathroom / Toilet Flooring- Anti skid ceramic tiles, Walls - Combination of Ceramic tiles up to 7 feet.

Good branded quality toilets

Electrical fittings- Finolex wires, legrande modular type switches & sockets.

All internal walls with Putty finish and PremiumPaint. External walls are with apex paint.

Cated Compound and stilt Parking.



CONTACT US

F4, 1 ST FLOOR,
OSIA MALL BUILDING,
NEXT TO SGPDA MARKET,
MARGAO, GOA. 403602.
MOBILE: 9130870598

EMAIL: sales@greystonerealestate.in

WEBSITE: www.greystonerealestate.in