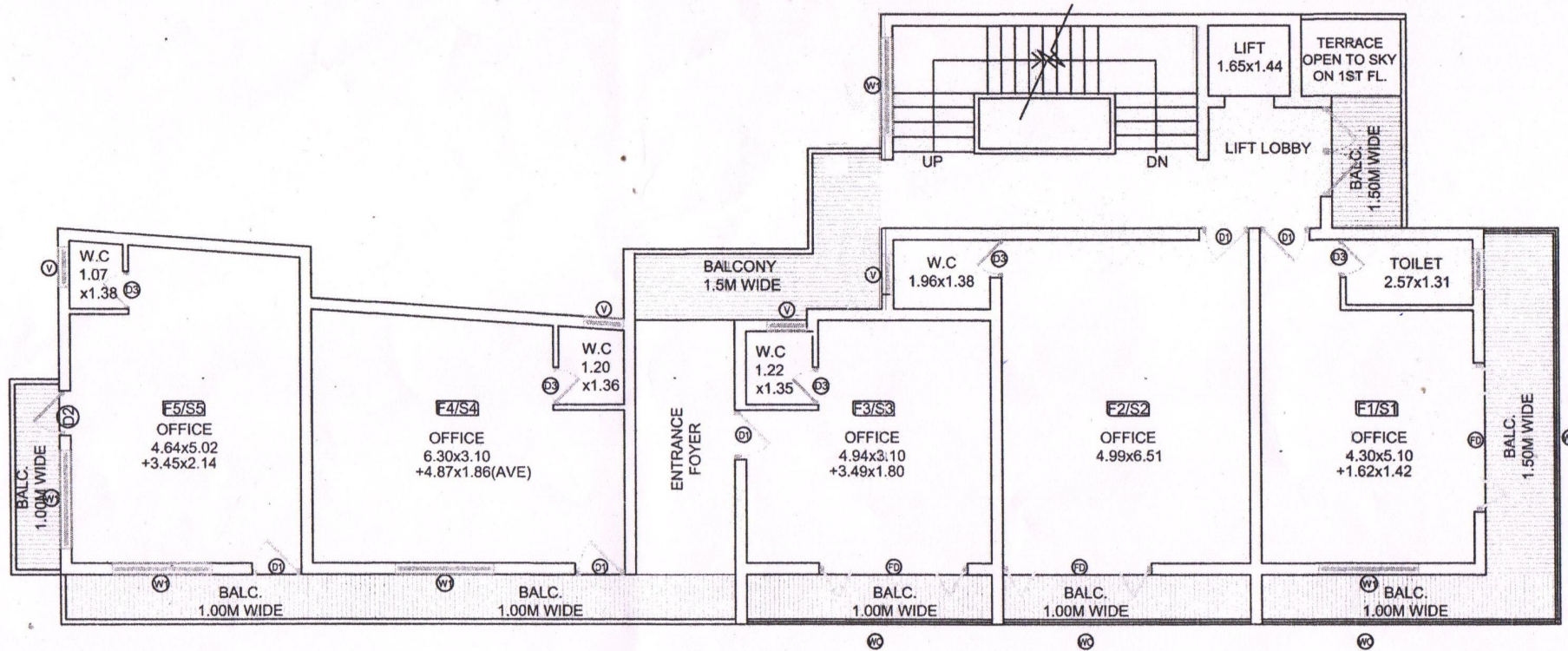
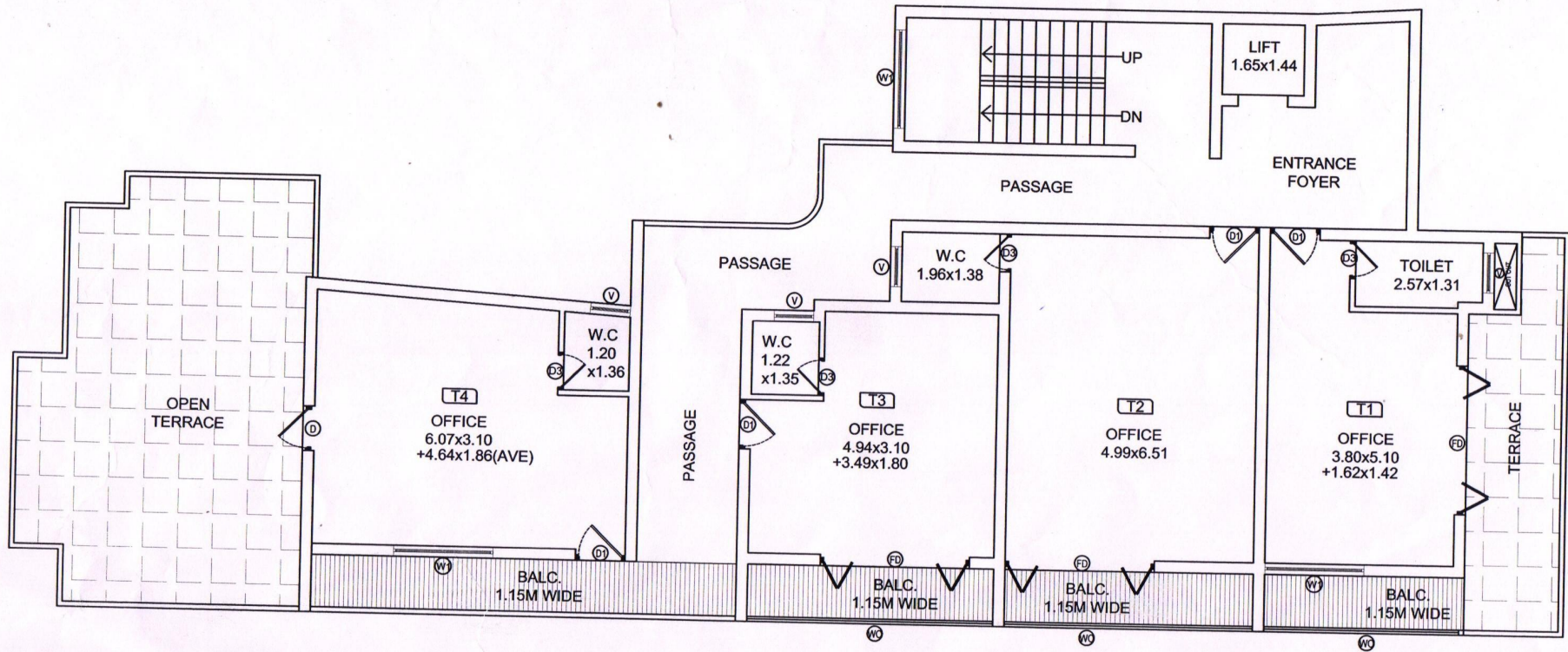


**GROUND FLOOR PLAN**



**TYPICAL FIRST & SECOND FLOOR PLAN**



**THIRD FLOOR PLAN**  
**SCALE 1:100**

SCALE	DATE	SHEET TITLE	JOB NO.	DESIGN CONSULTANTS:
NTS	12-05-17	THIRD FLOOR PLAN	491	
DRAWN BY	CHECKED BY	PROJECT	DWG-NO.	Ar. SANDESH K.P.CHODNEKAR <b>NEEVHI CONSULTANTS</b> ARCHITECTS & ENGINEERS
govind	SKPC	PLANS OF PROPOSED RESIDENTIAL & COMMERCIAL BUILDING FOR MR. SAGAR V. SHETYE, ON PLOT BEARING SURVEY NO.: 9/21-B, AT BICHOLIM VILLAGE, BICHOLIM, GOA.	03	
				T-8, JARAM COMPLEX, NEUGIWAGAR, PANAJI, GOA, INDIA. 403.051. PH. 0832 436199, 6452629