

Vision Elegante

Socorro, Porvorim - Goa



Experience the epitome of exclusivity with Vision Elegante. These luxurious residential homes boast seven opulent four BHK Independent Villas and 16 spacious apartments.

Located in the enchanting area of Socorro, Porvorim, just a quick two-minute drive away from National Highway 66, these homes offer convenience and serenity.

Equidistant to both of Goa's airports, Vision Elegante provides the perfect blend of elegance and functionality.

Each home comes with a private swimming pool and lush garden areas, allowing you to immerse yourself in a serene ambiance. Take refreshing swims in your personal pool or enjoy leisurely strolls through the captivating greenery.



Socorro Porvorim offers you a vibrant & secure community atmosphere and breath-taking coastal charm.

Indulge in a life of luxury and embrace the combination of exclusivity, premium finishes and plethora of amenities Vision Elegante has to offer!



Vision Elegante

Socorro, Porvorim - Goa



Amenities

Apartments

- Gated complex
- Lift with back-up generator
- 24-hour security
- CCTV surveillance
- Club house

Villas

- Individual Swimming pool
- Maid Room
- Modular Kitchen
- Provision for internal lift
- Covered car parks
- CCTV surveillance
- Gated complex with 24-hour security

Villa Specifications

Structure:

R.C.C. framed structure of columns, beams and slabs with internal walls of 4.5" brick masonry with single coat plaster and one coat neeru and external walls of 9" brick / laterite masonry with double coat plaster.

Doors & Windows:

All doors with teakwood frames. Main door will be of teakwood and bedroom doors of 35mm thick flush doors with both sides teak veneer. Windows will be powder coated aluminium with aluminium fittings.

Kitchen:

Cooking platform with black granite top with 45cm tile lining above the platform. Stainless steel sink along with bowl will be provided.

Paint:

Internal walls and ceiling will be painted with acrylic distemper. Doors will have paint / varnish / French polish. External walls will be painted with weather shield exterior paint.

Sanitary ware:

A European WC, shower & wash basin in each toilet. Sanitary ware will be of Kohler/Jaquar or equivalent quality. Fittings of Jaquar or equivalent quality.

Electrical:

Concealed wiring in Finolex/ Anchor cables or equivalent quality. Switches will be of Legrand / Anchor Roma or equivalent quality.

Flooring:

Vitrified tiles for floor and ceramic tiles for toilet flooring. Glazed tiles for walls.

Vision Elegante

Socorro, Porvorim - Goa

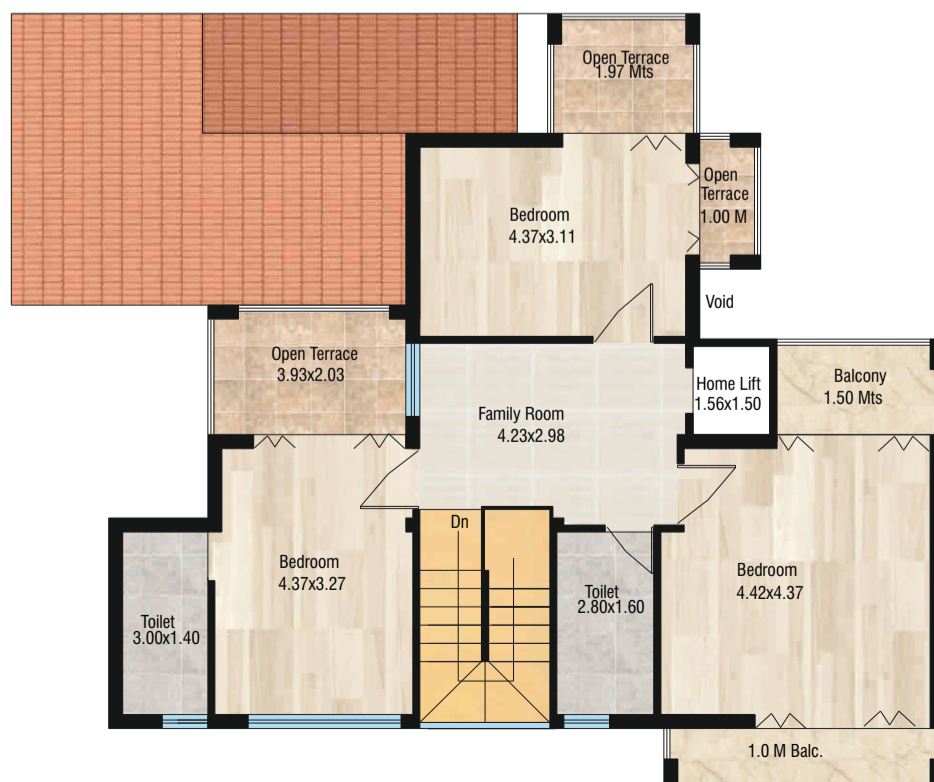
VILLA A



GROUND FLOOR PLAN



FIRST FLOOR PLAN



SECOND FLOOR PLAN

Vision Elegante

Socorro, Porvorim - Goa

VILLA B



GROUND FLOOR PLAN



FIRST FLOOR PLAN



SECOND FLOOR PLAN

Vision Elegante

Socorro, Porvorim - Goa

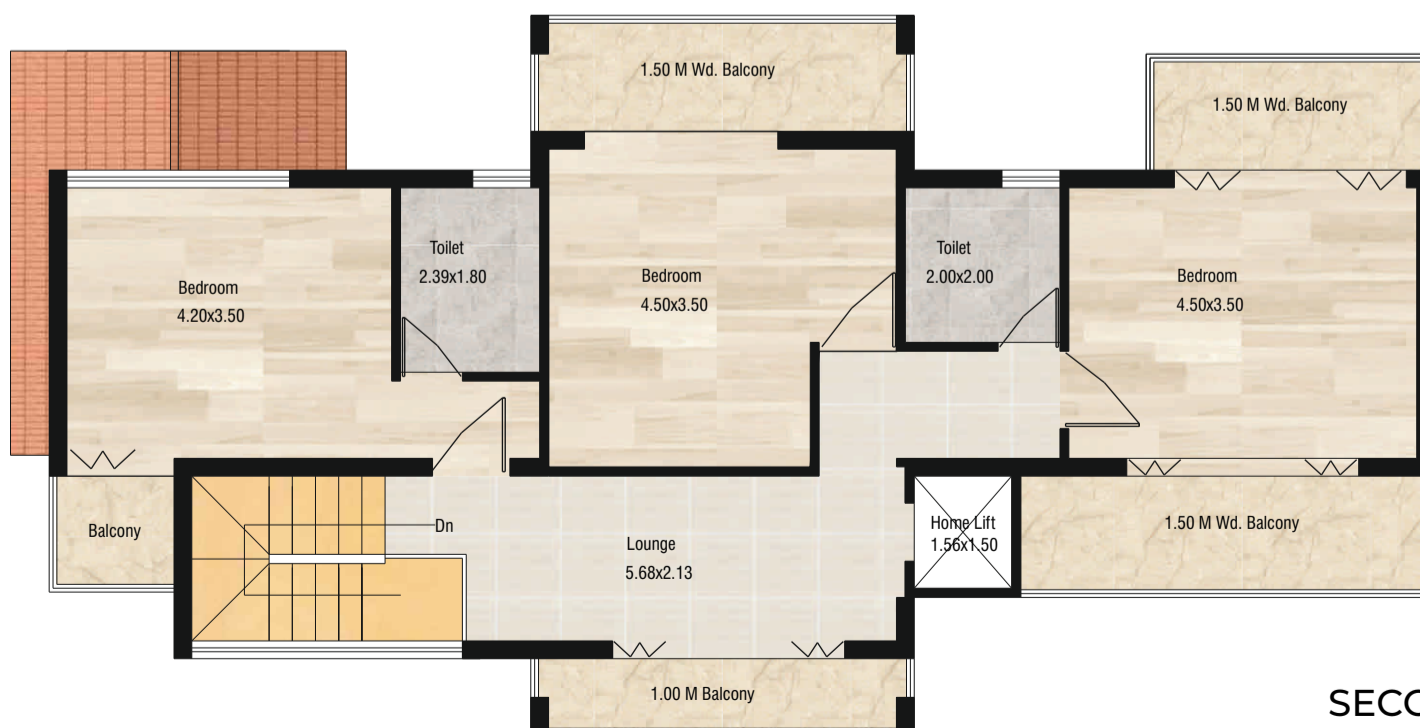
VILLA C



GROUND FLOOR PLAN



FIRST FLOOR PLAN



SECOND FLOOR PLAN

Vision Elegante

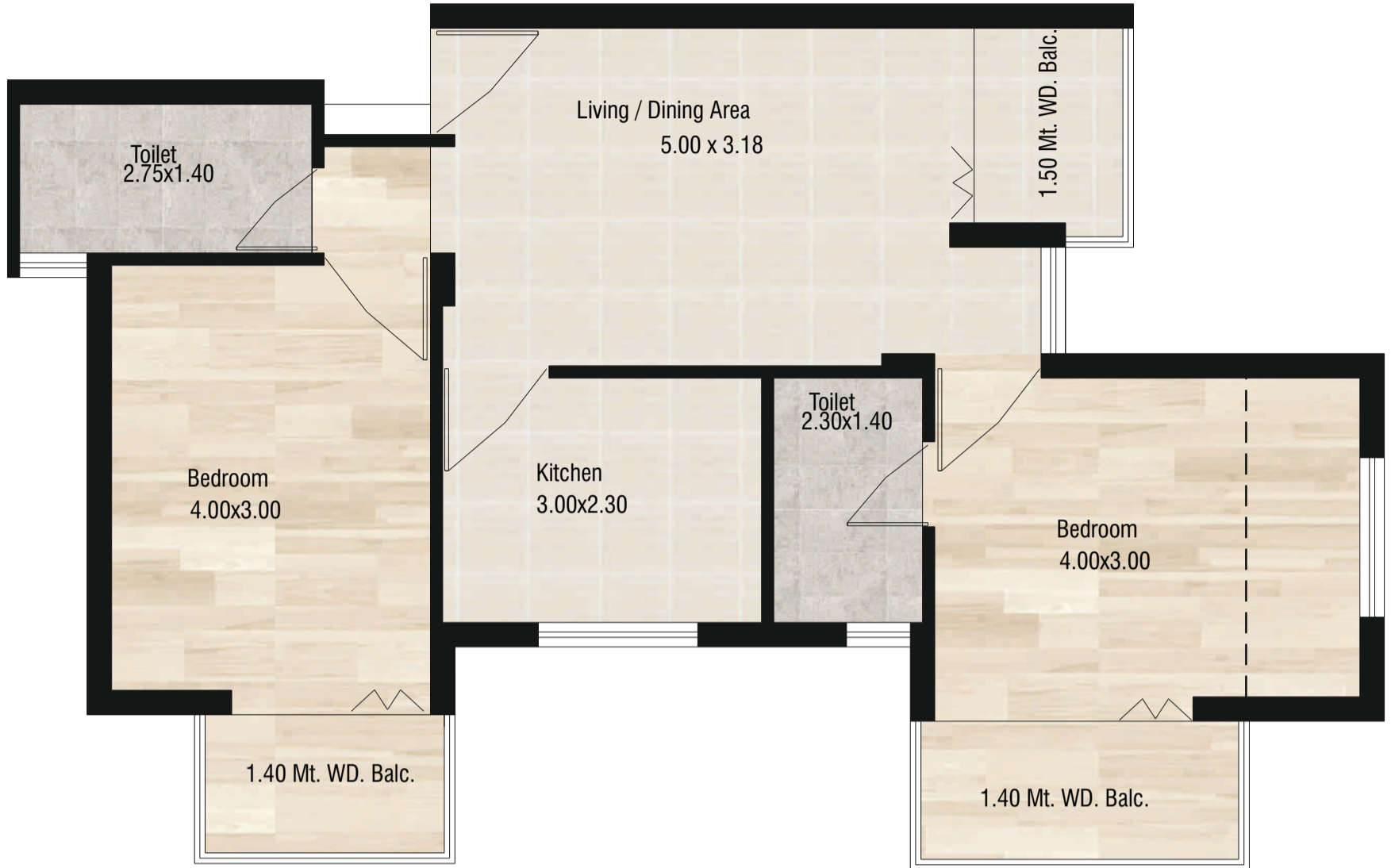
Socorro, Porvorim - Goa

Area Statement - Villas

Villa No.	Carpet area	Built-up area
Villa Type A1	302.68	356.71
Villa Type A2	302.68	356.71
Villa Type B1	260.19	320.47
Villa Type B2	260.19	320.47
Villa Type C1	297.57	328.28
Villa Type C2	297.57	328.28
Villa Type C3	237.75	320.47

Vision Elegante

Socorro, Porvorim - Goa



2 BHK Apartment



1 BHK Apartment

Vision Elegante

Socorro, Porvorim - Goa

Area Statement - Apartments

GROUND FLOOR		
Flat no.	Built-up area	Carpet area
101	86.68	67.04
102	86.76	67.12

UPPER GROUND FLOOR		
Flat no.	Built-up area	Carpet area
204	82.99	67.01

FIRST FLOOR		
Flat no.	Built-up area	Carpet area
304	82.99	67.01

SECOND FLOOR		
Flat no.	Built-up area	Carpet area
403	59.93	45.53
404	82.99	67.01

THIRD FLOOR		
Flat no.	Built-up area	Carpet area
503	63.09	45.53
504	86.15	67.01

Vision Elegante

Socorro, Porvorim - Goa



For Bookings Please Contact



VISION DEMPO

Foundation of Trust

M/s Vision Dempo Hospitality & Estates Pvt Ltd.

Vision house, Next to The Crown Hotel,

Jose Falcao Road, Panaji Goa 403001

Phone no: 9011013498 | Off: 0832- 2220242

Email : sales@visiondempo.com | website : www.visondempo.com

Consultants

Architect - Bryan D'Silva | RCC Consultant - Shri Krishna Sahakari