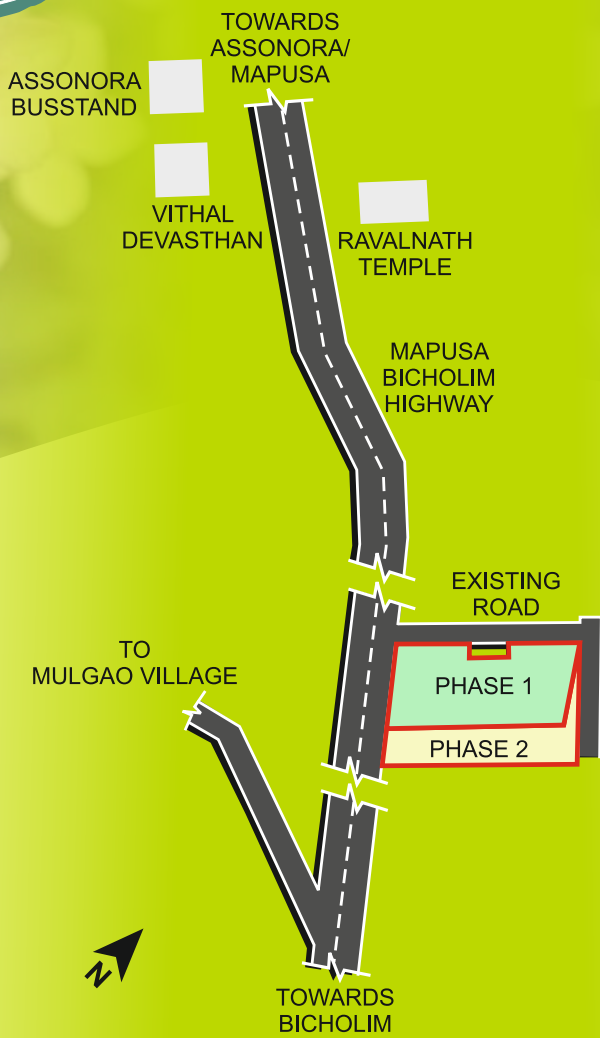


Saldanha Garden Location



Ongoing Projects

Saldanha
Keshia Villas
ANJUNA - GOA



Saldanha
Green Valley
Nachinola




Saldanha Developers Pvt Ltd

Head Office:

302, Mathias Plaza, 18th June Road, Panaji - 403 001, Goa, India
Tel: (0832) 2224485, 2220568 / 69
Mob: (91) 8888816923
E-mail : sales@saldanahgroup.com

5/6, Pawan Palace, Sitladevi Temple Road, Mahim - 400 016, Mumbai
Tel : (022) 24314300 / 301
E-mail : mumbai.office@saldanahgroup.com

Web Site : www.saldanahgroup.com

This is not a legal offering and all plans and visuals are an artists impression and subject to revision.

Some of Our Completed Projects



Designed by : Shirish, 9822144821



Saldanha Garden - II

Bicholim, Goa



Welcome to the Saldanha Garden

This exclusive Garden - is nestled in the midst of greenery in the calm and peaceful location on the Mapusa- Bicholim main road. The Garden complex offers few commercial units, which will benefit from the main Mapusa –Bicholim road. The residential units are located amidst green surrounding with schools and main Bicholim city just a kilometer away. The Garden residences are perfect blend of a home within tranquil natural environs

Our core belief is respecting the environment with our teams of architect and engineers sharing these beliefs. In Saldanha Garden we will create fine green residential projects using the best of material. We take pride in providing this truly valuable real estate to be your next home and we make it part of our commitment to provide sustainable real estate, balancing this development with environment care and social responsibility.



Features

- Conveniently located on main road connecting Bicholim & Mapusa.
- Designated car parking spot for two bedroom apartment.
- Vitrified flooring for all room, with Anti skid tiles for bathroom, with hot and cold water arrangements.
- French windows for living room, giving a better feel of the outdoor.
- Kitchen platform with Granite top & Stainless Steel Sink.
- Main door with Teakwood and brass fixtures, other doors with teakwood frame and marine ply panels.

Highlights

Swimming Pool
Children's Play Area
Covered Parking

- Internal road with Interlocking pavers & landscape gardens.
- Provision for Inverter connection for power back up.
- Plumbing provision for Individual Solar water heater for each apartment to ensure continues hot & cold water in all taps.
- Provision for Satellite Dish.



paste pouch here

Saldanha Garden - II

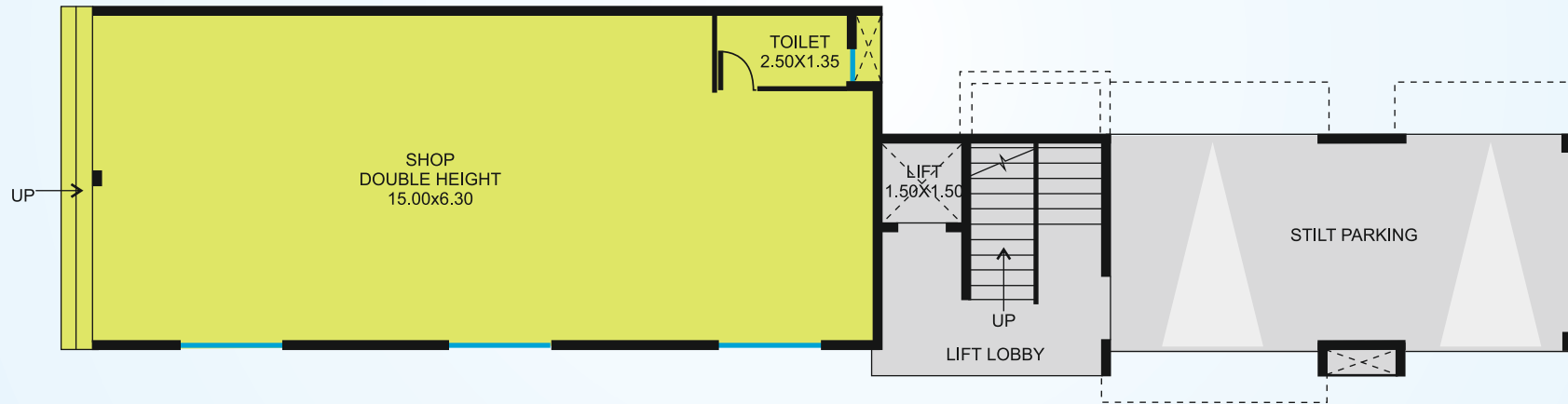
Bicholim, Goa

SITE PLAN



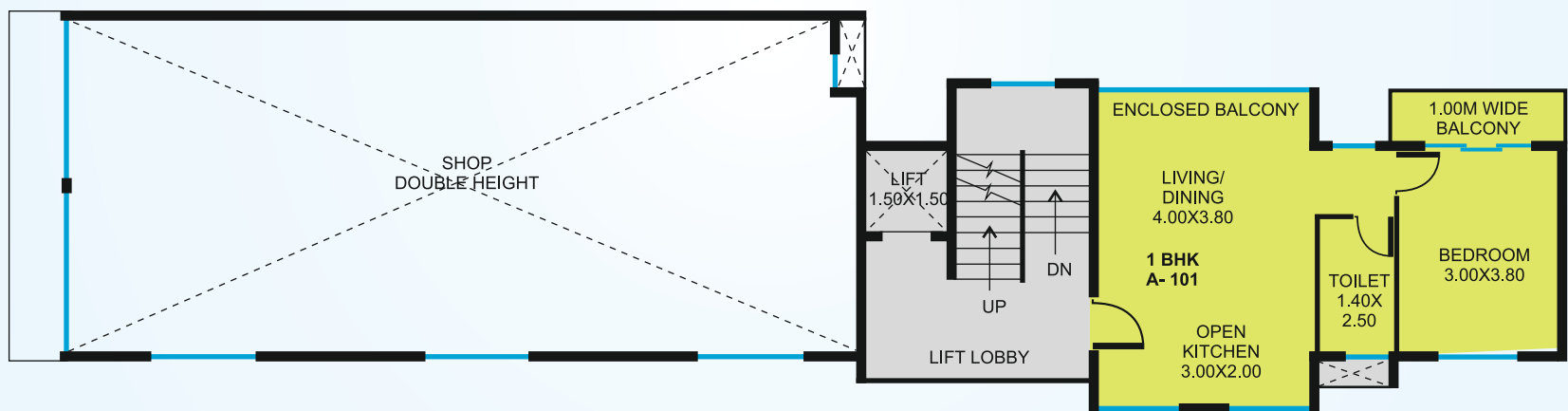
BLOCK - A, GROUND / STILT FLOOR PLAN

Shop No	Area sq.mt.	Type
01	103.78	SHOP (DH)



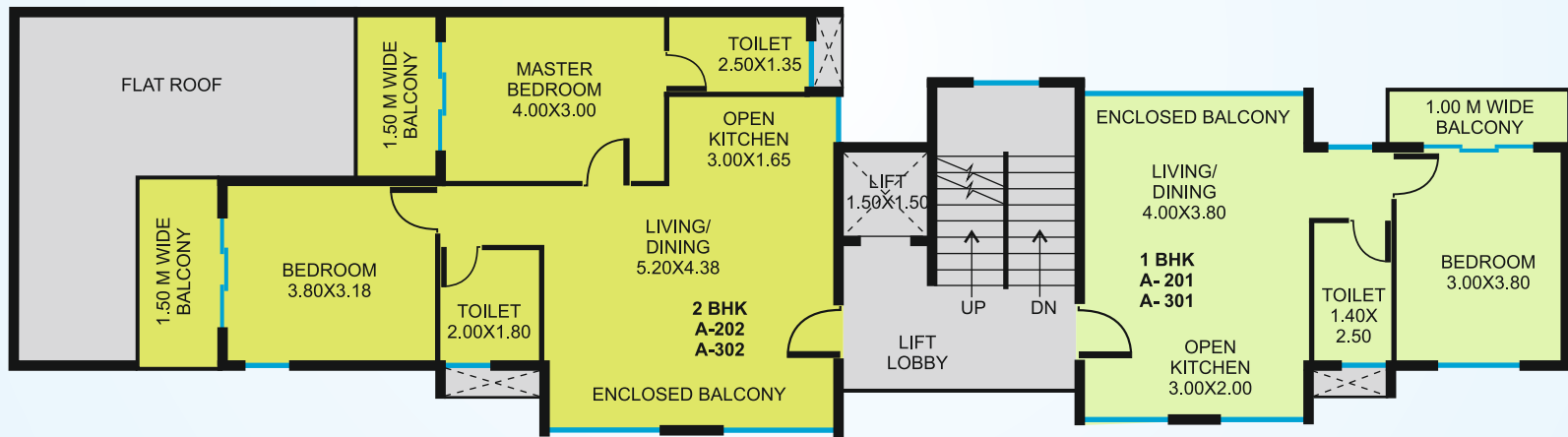
BLOCK - A, FIRST FLOOR PLAN

Flat No	Area sq.mt.	Type
A-101	66.45	1BHK



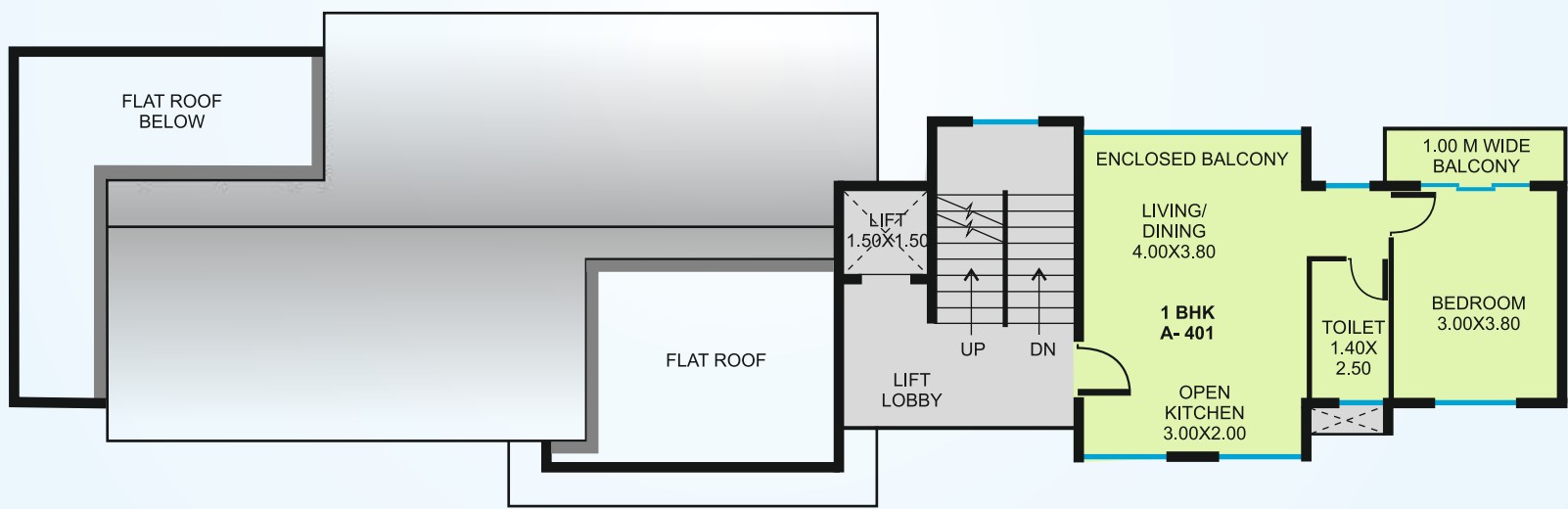
BLOCK - A, TYPICAL SECOND & THIRD FLOOR PLAN

Flat No	Area sq.mt.	Type
B-201/301	66.45	1BHK
B-202/302	105.72	2BHK



BLOCK - A, FOURTH FLOOR PLAN

Flat No	Area sq.mt.	Type
A-401	66.45	1BHK



BLOCK - B1, FIRST, SECOND, & THIRD FLOOR PLAN

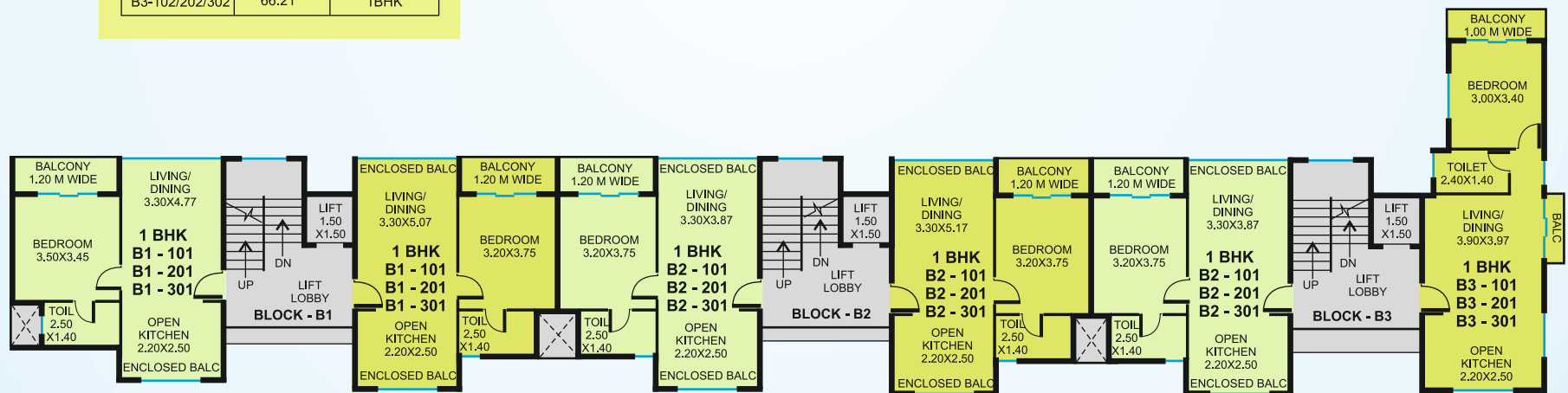
Flat No	Area sq.mt.	Type
B1-101/201/301	65.00	1BHK
B1-102/202/302	64.95	1BHK

BLOCK - B2, FIRST, SECOND, & THIRD FLOOR PLAN

Flat No	Area sq.mt.	Type
B2-101/201/301	64.91	1BHK
B2-102/202/302	65.10	1BHK

BLOCK - B3, FIRST, SECOND, & THIRD FLOOR PLAN

Flat No	Area sq.mt.	Type
B3-101/201/301	65.52	1BHK
B3-102/202/302	66.21	1BHK



BLOCK - B1, FOURTH FLOOR PLAN

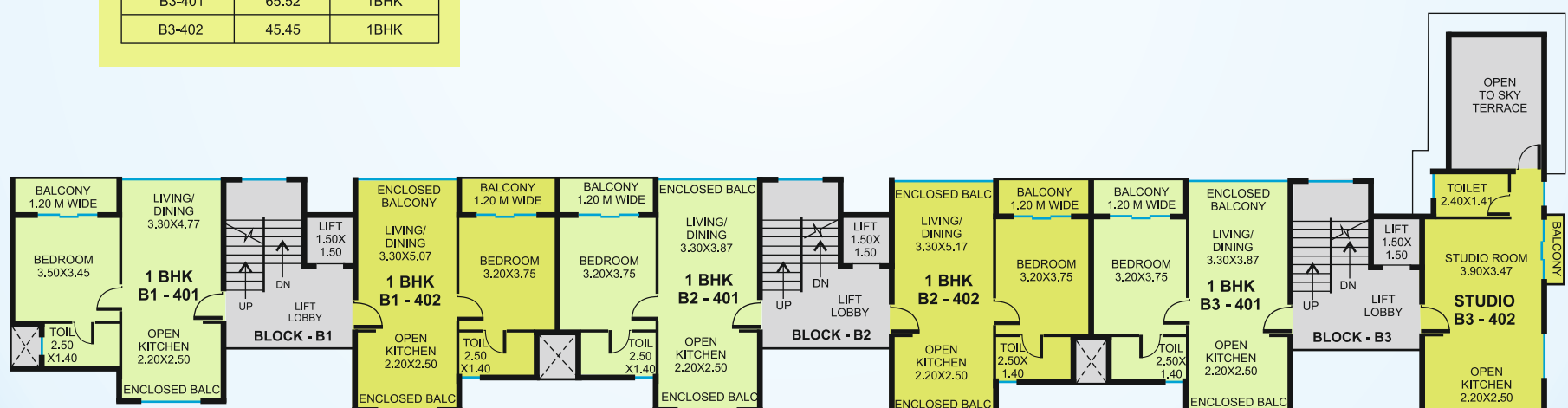
Flat No	Area sq.mt.	Type
B1-401	65.00	1BHK
B1-402	64.95	1BHK

BLOCK - B2, FOURTH FLOOR PLAN

Flat No	Area sq.mt.	Type
B2-401	64.91	1BHK
B2-402	65.10	1BHK

BLOCK - B3, FOURTH FLOOR PLAN

Flat No	Area sq.mt.	Type
B3-401	65.52	1BHK
B3-402	45.45	1BHK





pouch with printing ▲

▼ pouch without printing just tinted paper