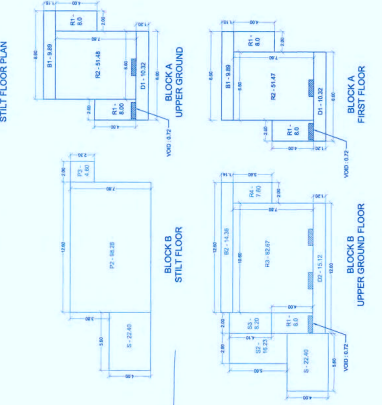


Approved with condition vide No. 2782/2019 dated 19/09/2019  
 Dy. Town Planning Officer  
 Govt. of Goa, Margao

AREA DIAGRAM @ 1:200



**BLOCK A**

FLOOR	USE	TOTAL BUILT UP AREA	AREA FREE FROM PARK	NET FLOOR AREA	NET EFFECTIVE AREA
STILT FLOOR	PARK	67.08	-	67.08	67.08
UPPER GROUND	RES	67.09	20.21	67.08	67.08
FIRST FLOOR	RES	67.09	20.21	67.08	67.08
SECOND FLOOR	RES	67.09	20.21	67.08	67.08
THIRD FLOOR	RES	67.09	20.21	67.08	67.08
TOTAL		335.75		335.75	335.75

**BLOCK B**

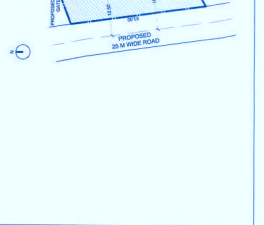
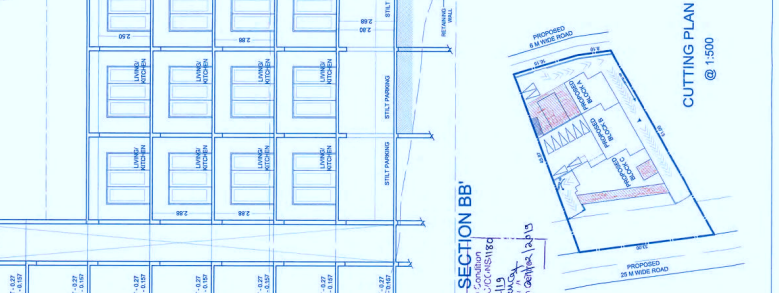
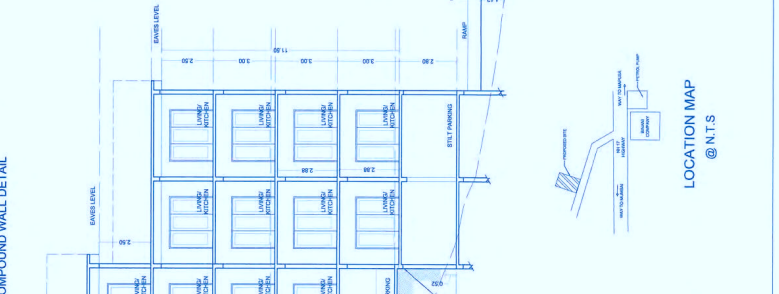
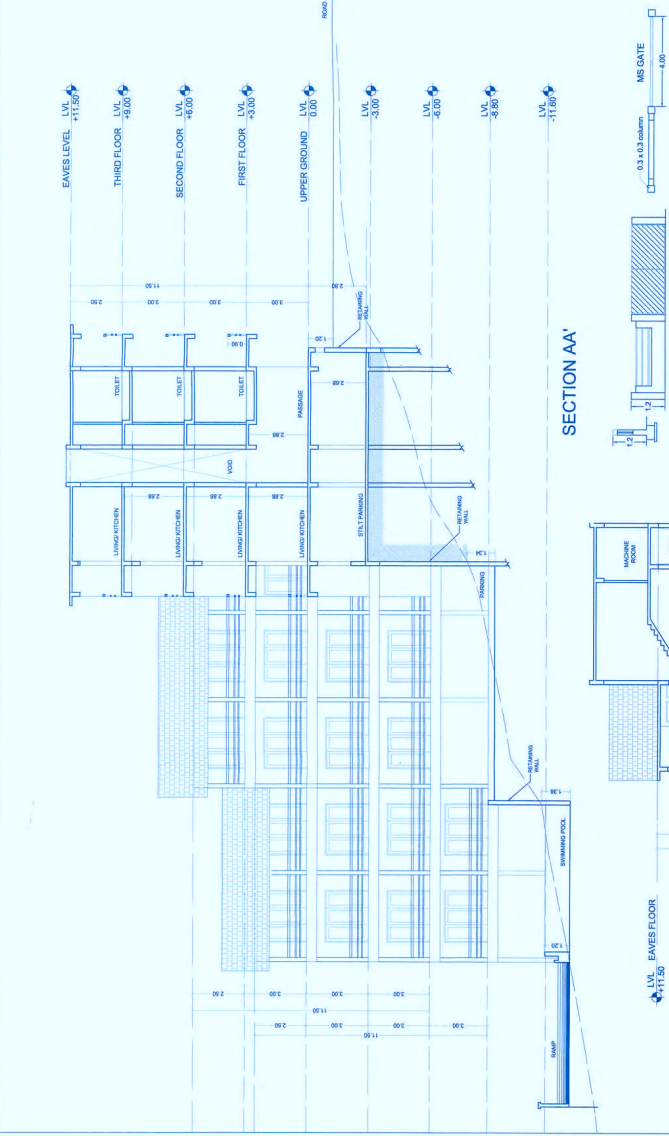
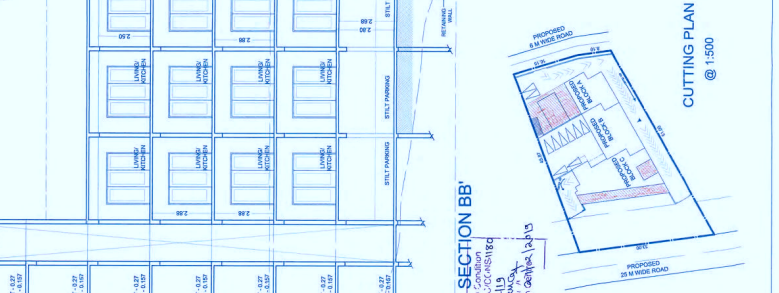
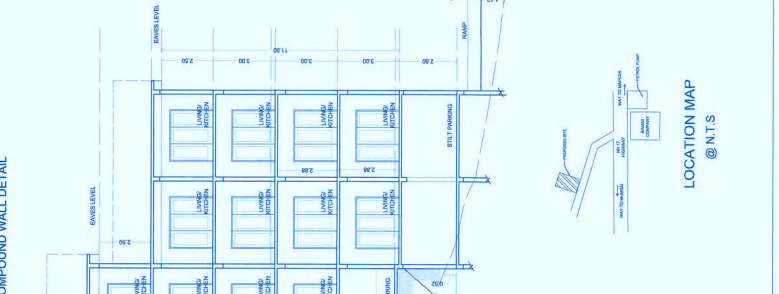
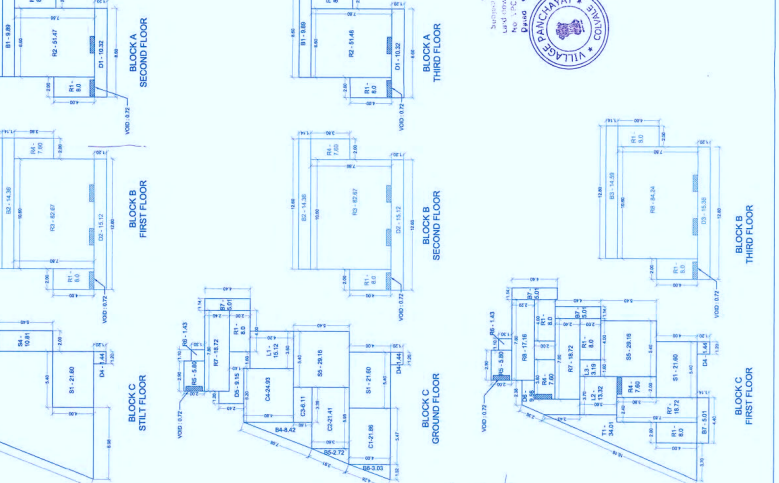
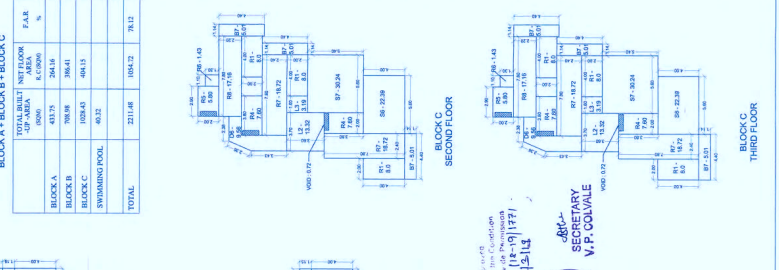
FLOOR	USE	TOTAL BUILT UP AREA	AREA FREE FROM PARK	NET FLOOR AREA	NET EFFECTIVE AREA
STILT FLOOR	PARK	128.28	22.80	105.48	105.48
UPPER GROUND	RES	154.9	26.46	128.44	128.44
FIRST FLOOR	RES	154.9	26.46	128.44	128.44
SECOND FLOOR	RES	154.9	26.46	128.44	128.44
THIRD FLOOR	RES	154.9	26.46	128.44	128.44
TOTAL		708.86		708.86	708.86

**BLOCK C**

FLOOR	USE	TOTAL BUILT UP AREA	AREA FREE FROM PARK	NET FLOOR AREA	NET EFFECTIVE AREA
STILT FLOOR	PARK	206.66	1.44	205.22	205.22
UPPER GROUND	RES	203.91	20.77	183.14	183.14
FIRST FLOOR	RES	203.91	20.77	183.14	183.14
SECOND FLOOR	RES	203.91	20.77	183.14	183.14
THIRD FLOOR	RES	203.91	20.77	183.14	183.14
TOTAL		1024.4		1024.4	1024.4

**AREA STATEMENT**

AREA STATEMENT	
AREA FOR ROAD	1500.00 SQM
AREA FOR ROAD	228.84
NET EFFECTIVE AREA	1000.00 SQM
PROPOSED COVERED AREA	375.98 SQM
PERMISSIBLE COVERED AREA	424.00 SQM
PERMISSIBLE COVERAGE	42%
PROPOSED BUILT UP AREA	
UPPER GROUND FLOOR	274.67 SQM
FIRST FLOOR PLAN	266.76 SQM
SECOND FLOOR PLAN	266.76 SQM
THIRD FLOOR PLAN	266.76 SQM
TOTAL FLOOR AREA	1075.95 SQM
REDUCTION FOR DUCT (0.72 X 92)	21.60 SQM
TOTAL PROPOSED FLOOR AREA	1054.35 SQM
PERMISSIBLE FLOOR AREA (75% OF 1405.00)	1053.75 SQM
PROPOSED FAR	75.12
PERMISSIBLE FAR	80
SETBACK	40.32 SQM
SETBACK	3.00 M
SETBACK	4.50 M
HEIGHT OF THE BUILDING	11.50 M
COMMUNITY SPACE (1.5% OF FLOOR AREA)	78.10 SQM
PERMISSIBLE COMMUNITY SPACE (1.0% OF FLOOR AREA)	64.48 SQM



**SAJIYA SADIQ KATVELIA**  
 Chartered Architect  
 B-A-104/2017/2789  
 Reg. No. AR/00142013

**CARMINO AGNELO DSOUZA**  
 Secretary  
 V.P. COLVALE

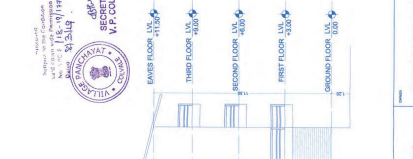
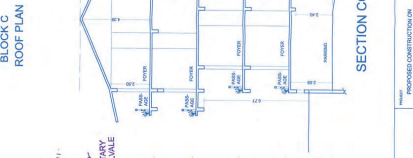
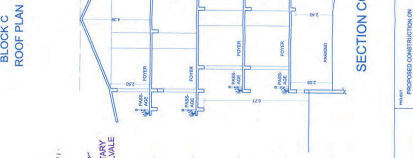
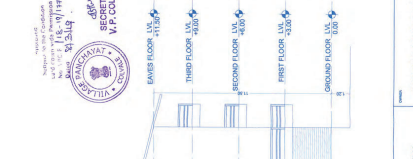
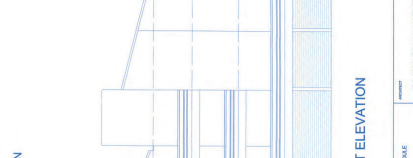
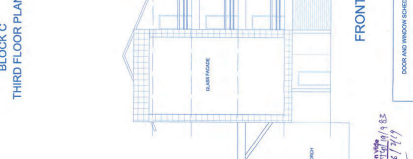
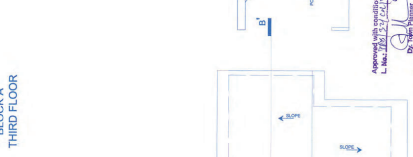
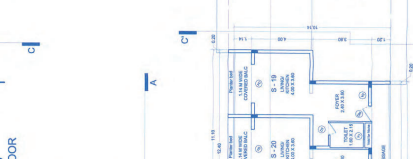
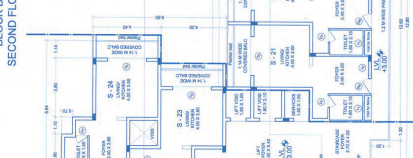
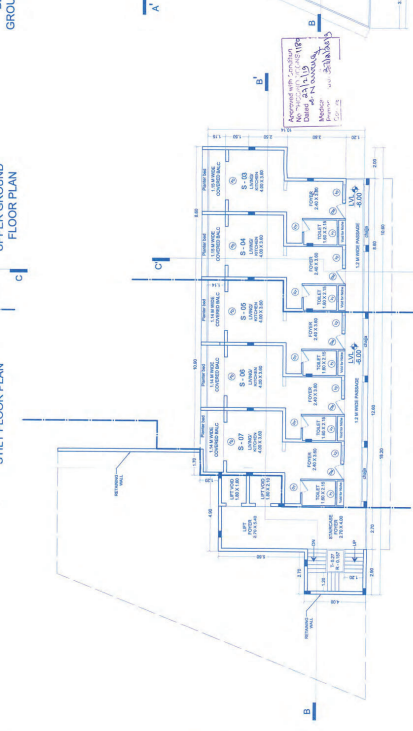
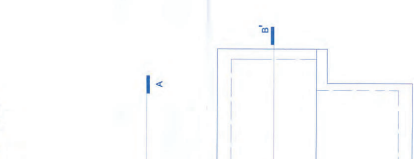
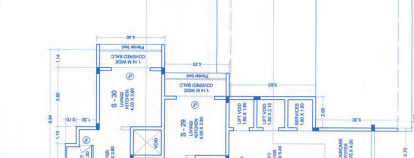
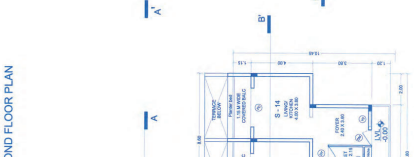
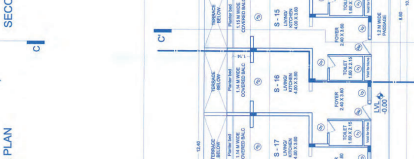
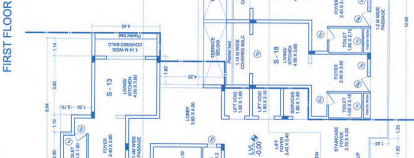
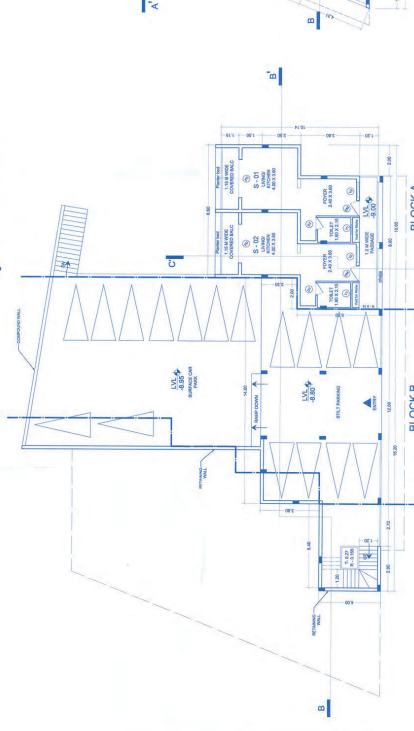
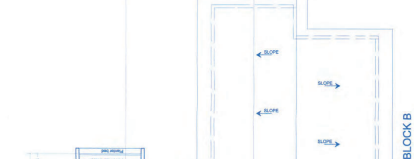
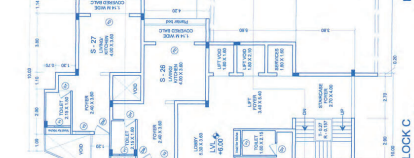
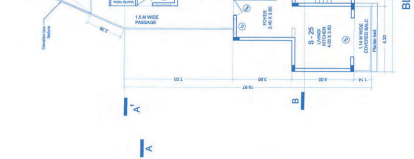
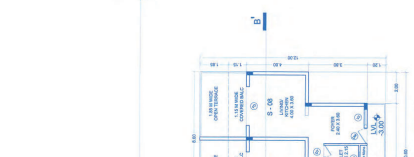
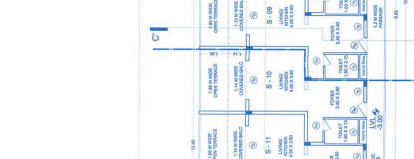
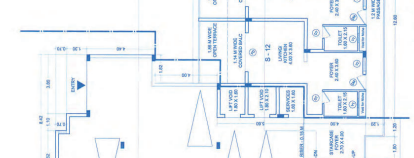
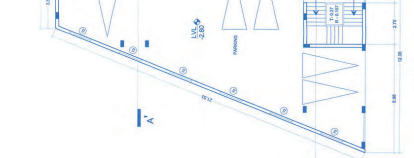
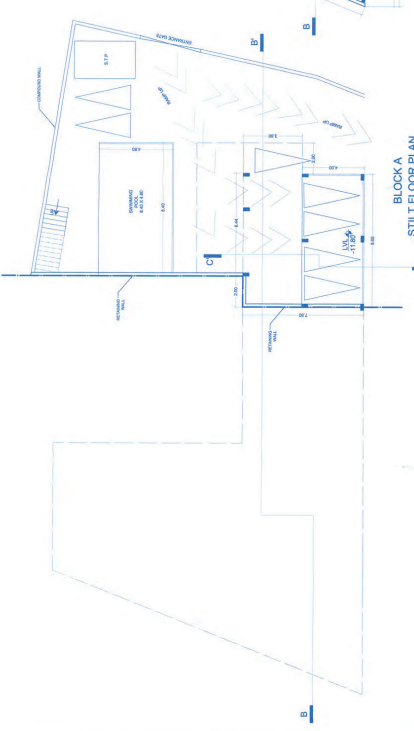
PROPOSED CONSTRUCTION ON SURVEY NO. 26 SUBDIVISION NO. 1-B AT COLVALE, MARGAO, GOA

DATE: 11.06.2019

FLOOR PLANS

01 OF 02

11/20



ROOM AREA SUMMARY (SCHEDULE)	
NO.	AREA (SQ. M)
01	11.11
02	11.11
03	11.11
04	11.11
05	11.11
06	11.11
07	11.11
08	11.11
09	11.11
10	11.11
11	11.11
12	11.11
13	11.11
14	11.11
15	11.11
16	11.11
17	11.11
18	11.11
19	11.11
20	11.11
21	11.11
22	11.11
23	11.11
24	11.11
25	11.11
26	11.11
27	11.11
28	11.11
29	11.11
30	11.11
31	11.11
32	11.11
33	11.11
34	11.11
35	11.11
36	11.11
37	11.11
38	11.11
39	11.11
40	11.11
41	11.11
42	11.11
43	11.11
44	11.11
45	11.11
46	11.11
47	11.11
48	11.11
49	11.11
50	11.11
51	11.11
52	11.11
53	11.11
54	11.11
55	11.11
56	11.11
57	11.11
58	11.11
59	11.11
60	11.11
61	11.11
62	11.11
63	11.11
64	11.11
65	11.11
66	11.11
67	11.11
68	11.11
69	11.11
70	11.11
71	11.11
72	11.11
73	11.11
74	11.11
75	11.11
76	11.11
77	11.11
78	11.11
79	11.11
80	11.11
81	11.11
82	11.11
83	11.11
84	11.11
85	11.11
86	11.11
87	11.11
88	11.11
89	11.11
90	11.11
91	11.11
92	11.11
93	11.11
94	11.11
95	11.11
96	11.11
97	11.11
98	11.11
99	11.11
100	11.11

PROJECT: CARMINO AGNIELO DSOUGA  
 ARCHITECT: SAJMA SADIQ KATVELA  
 DATE: 02 OF 02  
 SCALE: 1:100  
 SHEET NO: 11/06/2016

APPROVED WITH RESERVATION NO. 18  
 PROJECT NO. 11/06/2016  
 SHEET NO. 02 OF 02  
 DATE: 11/06/2016