

VENUS

HOMES THAT DEFINE YOU

ONE AND TWO BEDROOM APARTMENTS
AT AQUEM - GOA

A PROJECT BY

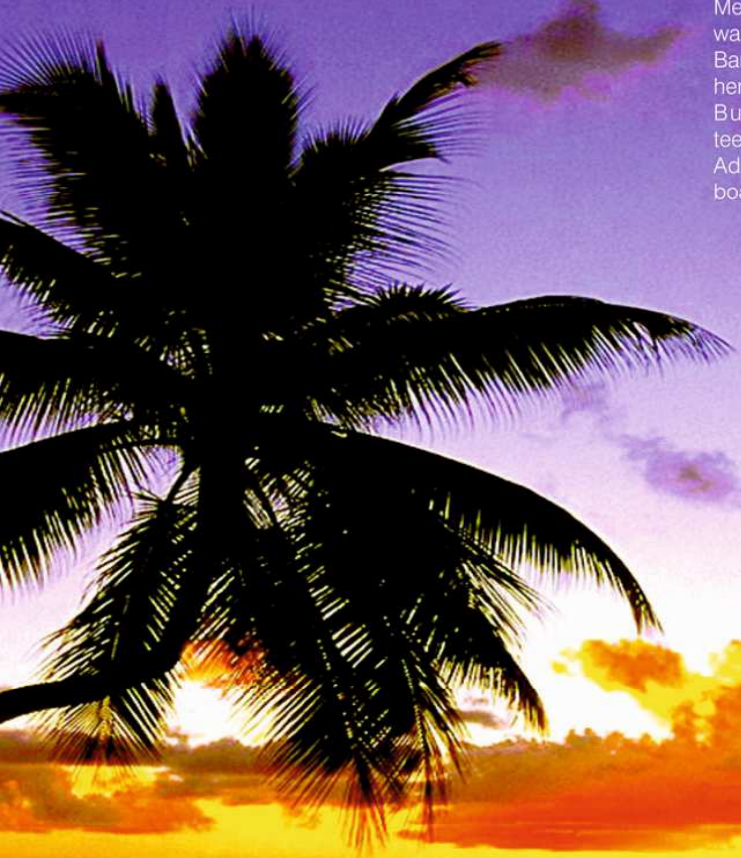


Pretty Homes Realty

BUILDERS AND DEVELOPERS

GOA

A place filled with blissful sunny days...
Swaying palms amidst an abundance of natural beauty...
A coastline of sandy shores and blue waters...
Meandering rivers, creaks and waterfalls...
Baroque architecture steeped in heritage and tradition...
Bustling cities and towns teeming with opportunities...
Adventure and water sports, boat rides and island trips...



Live amidst spectacular beauty....



Aquem - Margao city

Margao, often called the commercial capital of Goa, is the capital of the southern taluka of Salcette and also of the South Goa district. Because of its location, it serves as a service and transport hub to the areas of south Goa.

Margao hosts many schools and colleges, banks, restaurants, cultural institutions and the railway station.

Aquem, a growing suburb of Margao is an ideal residential locality with convenient road networks and local businesses. A peaceful place to live while making use of all the city amenities.

Live in the perfect locality...

Quiet residential environs with city perks....

Location plan



An ideal opportunity to have that perfect home
for you and your family....



VENUS

HOMES THAT DEFINE YOU

Welcome to VENUS, an apartment scheme of one and two bedroom apartments situated in the heart of the city at Aquem, Goa by Pretty Homes Realty.

Conveniently located, the apartments are in a quiet residential locality, allowing you easy access to schools and colleges, financial institutions, markets etc, giving you all the benefits of city living while you enjoy your quiet and privacy.

Designed to provide maximum comfort and efficiency, the homes speak of premium specifications and superior finishes.

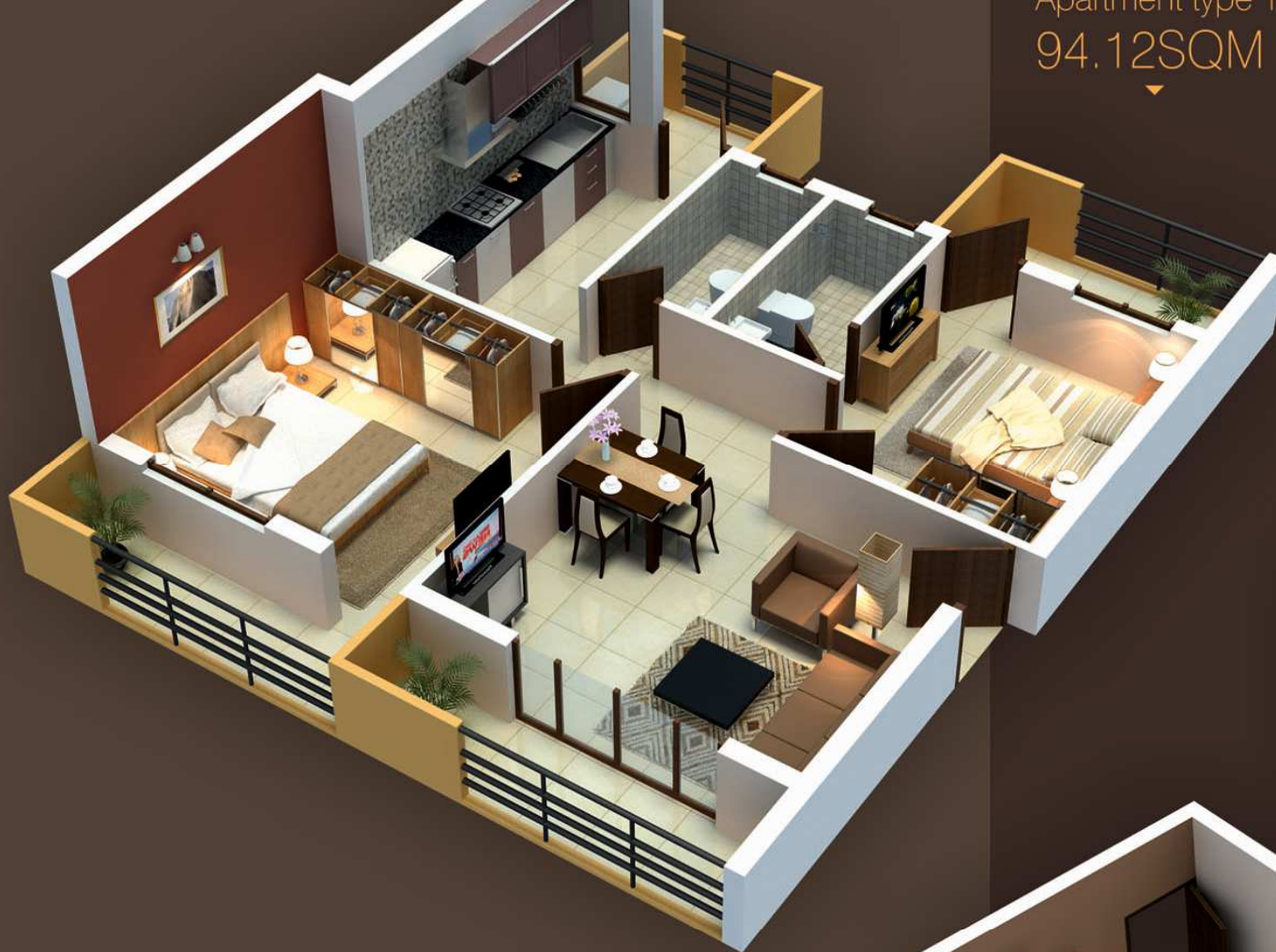
Experience the joy of comfort and convenience at VENUS.

Indulge yourself...
with a home that defines you

Project Amenities

- Excellent location
- On-time possession
- Security
- Paved internal roads
- Landscaped green areas
- Stilt parking facility
- Elevator
- Secured complex with all sides compound wall & gate
- Superior finishes
- Spacious apartments

Apartment type 1
94.12SQM



Aesthetically designed interior spaces
to cater to your every need.

Apartment type 2
89.25 SQM



Project Specifications

- CORRIDORS LIVING,** Flooring - Vitrified Tiles
- DINNING, LOBBY :** Walls - Acrylic emulsion paint
Ceiling - White Acrylic emulsion paint
- BED ROOMS :** Flooring - Vitrified tiles for all bedrooms
Walls - Acrylic emulsion paint
Ceiling - White Acrylic emulsion paint
- KITCHEN :** Flooring - Anti skid ceramic tiles and
marble/granite counter
Walls - Ceramic tiles up to 2 feet (above counter)
& Acrylic emulsion paint elsewhere
Ceiling - White Acrylic emulsion paint
- TOILETS :** Flooring - Anti skid ceramic tiles
Walls - Combination of Ceramic tiles up to 5 feet
Ceiling - White Acrylic emulsion paint
- BALCONY :** Flooring - Vitrified tiles



Apartment type 1
89.00 SQM

Great attention has been given to every detail, to provide quality finishes

Apartment type 2
86.92 SQM

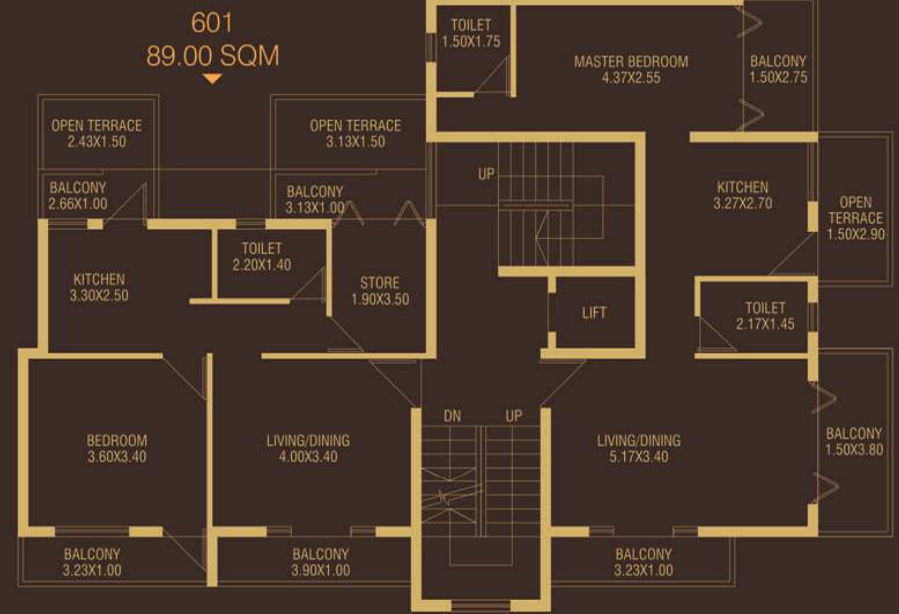
Project Specifications

- LIFT LOBBY/ ENTRANCE HALL : Flooring - Natural Stone / Vitrified Tiles
Walls - Natural Stone/Ceramic Tiles/ Paint
Ceiling - White Acrylic emulsion paint
- DOOR & WINDOWS : Main door - Teak wood door with hardwood frame
Internal doors - Painted flush door shutter with hardwood Frame
External windows - Powder coated aluminum with glass
- KITCHEN FITTINGS : Kitchen with counter in granite top,
stainless steel single bowl drain board sink
- TOILET FITTINGS : Single lever CP fittings, white chinaware
- ELECTRICAL : Modular type switches & sockets, concealed copper wiring





GROUND FLOOR PLAN



SIXTH FLOOR PLAN

102, 202, 302, 402, 502
89.25 SQM



702
79.00 SQM



For bookings and enquiries please contact



Pretty Homes Realty

BUILDERS AND DEVELOPERS

203 - 204, 2nd floor, Mapari Audi Plaza,
Erasmu Carvalho Street, Margao, Goa. 403601
Ph: 9823644444