

SKYraia

Commercial and Residential Spaces
Raia, Margao - Goa

A transformation in the making
soon to become a landmark !!!




SKYWORLD
PROPERTIES & HOLDINGS

Live the Landmark

SkyWorld is a construction and project management company that delivers state of the art property development. Excellence in design is its top most priority while still maintaining functionality of each designed unit. Knowledge, skill, experience and commitment to job is what sets us apart to high standards.

At SkyWorld, we believe in building responsibly to deliver great living experience. More importantly, we believe that everyone can and should be able to own a quality residential suite or commercial space.

A transformation in the making - Sky Raia is located at Raia, Margao, close to the town centre and modern amenities. A mixed development meticulously designed for commercial and residential spaces.

SKYraia



Specifications:

1. RCC framed structure reinforced with TATA steel.
2. Quake resistance structural design.
3. Paint:
External - Superior quality water based acrylic paint.
Internal - Emulsion paint of premium brand.
4. Doors and windows:
Main door - Teakwood.
Bedroom doors - Flush doors with both sides Teakwood veneers.
Windows - Powder coated aluminum or UPVC sliding glazed windows.
5. Bathroom fixtures and sanitary ware - Jaguar make or equivalent.
Full height dado tiles.
6. Flooring - Vitrified tiles.
7. Telephone & DTH point in living areas.
8. Electrical - 3 phase electrical connection with concealed copper wiring of PVC insulation of premium brand. Modular electrical switches of superior quality. Power points provisions for Geysers in all bathrooms and A/C's in all bedrooms.
9. Kitchen: Stainless steel sinks with drain board. Granite platform with 45cms dado tiles.

Project Highlights:

1. Premium development with high aesthetic value.
2. LED illuminated building complex.
3. Large open terraces with private sit-outs .
4. Large windows for light and style.
5. WIFI enabled homes.
6. Activity centre.
7. Double height shops with large frontage and ample parking space.
8. Multiple toilet blocks for commercial spaces.
9. Well paved driveways.
10. CCTV camera for security surveillance.



SAMPLE APARTMENT
LAYOUT (2 BHK)

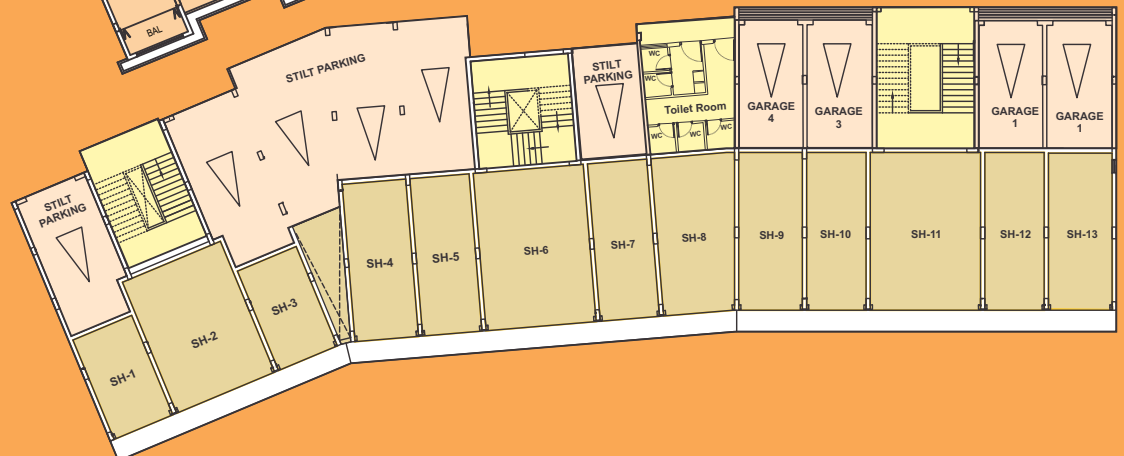


Disclaimer: The picture of the proposed Residential Flat/Unit and all furniture's, fixtures, items, electronic goods, amenities, landscaping, accessories etc. specified therein are only for the purpose of show casing the Residential Flat/Unit and the Developer is not liable / required to provide any furniture, items, electronic goods amenities, accessories etc. as displayed in the pictures. Interior designing used in the flat/unit plan and images are only for representation purpose.

FIRST FLOOR PLAN



GROUND FLOOR PLAN





Distance from the Project

Supermarket	1.0 km
Restaurants	1.2 kms
Banks & ATM's	1.5 kms
College & School	1.5 kms
Places of Worship	1.5 kms
Gogol Circle	1.7 kms
Hospital	2.0 kms
Fitness Centre & Spa's	2.0 kms
Shopping Centre	2.4 kms
Malls & Multiplex	4.0 kms
Margao City Muncipal Garden	4.5 kms
Railway Station & Bus Stand	4.5 kms



SKYWORLD PROPERTIES & HOLDINGS

Live the Landmark

Mobile

98221 27270 / 82084 86463

Email

skyworldbuilders@gmail.com

Website

www.skyworldproperties.com

Registered Office

#166/218, Curchorem, Goa. 403706 India.

Consultants

Architects: Sawant & Associates, Margao.
Structural Engineer: Mr. Auxillio Rodrigues, Mapusa.