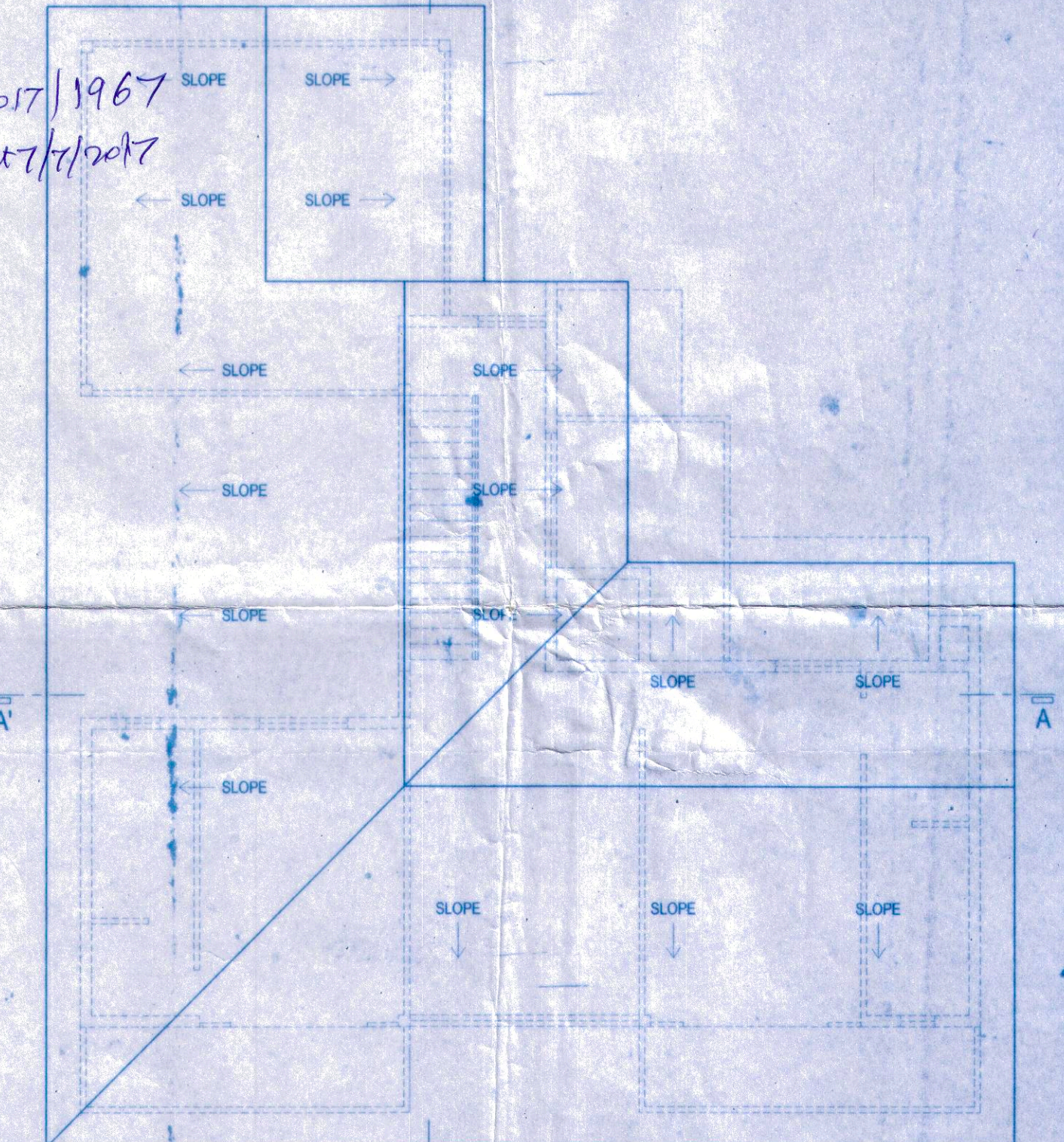
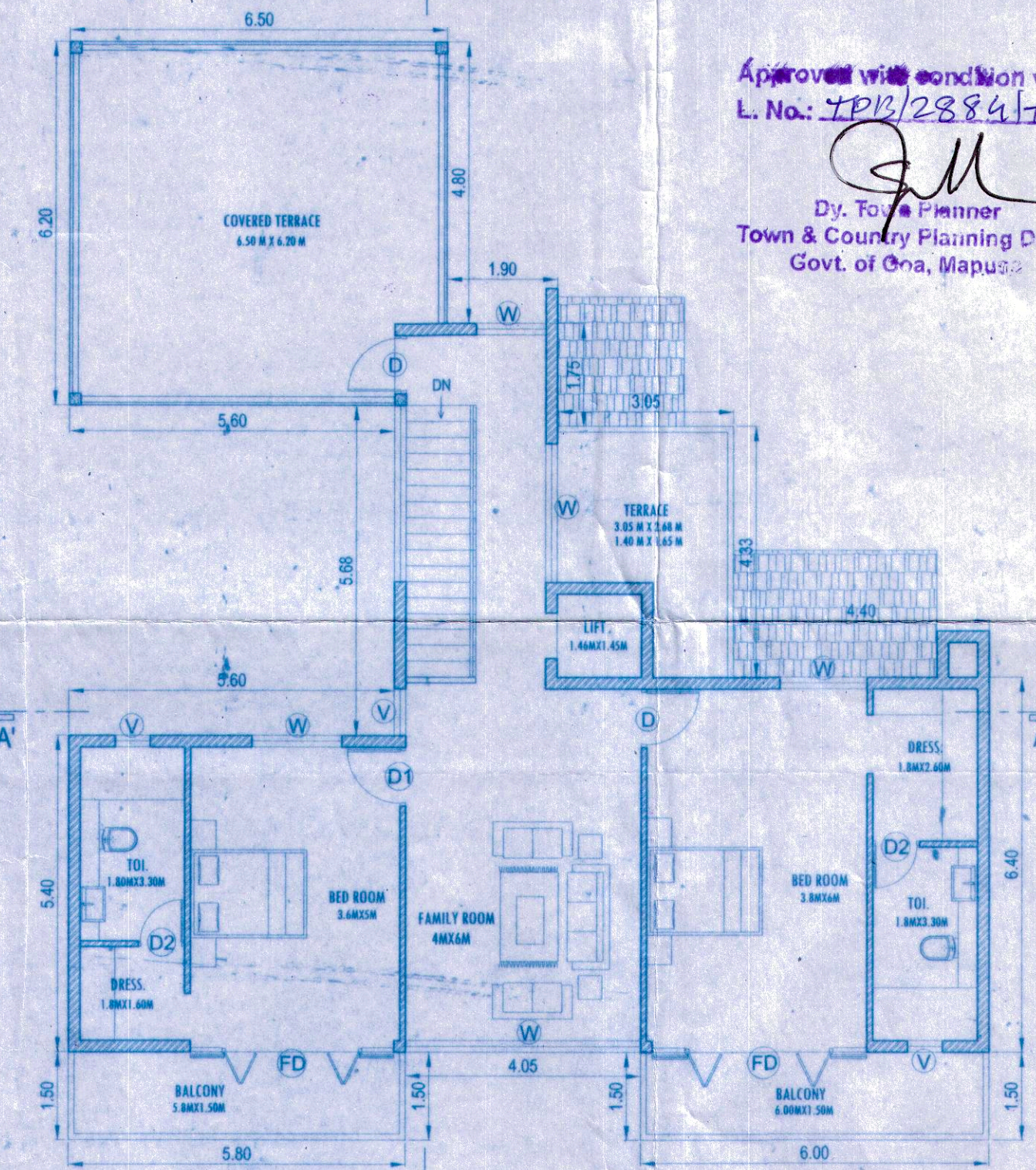
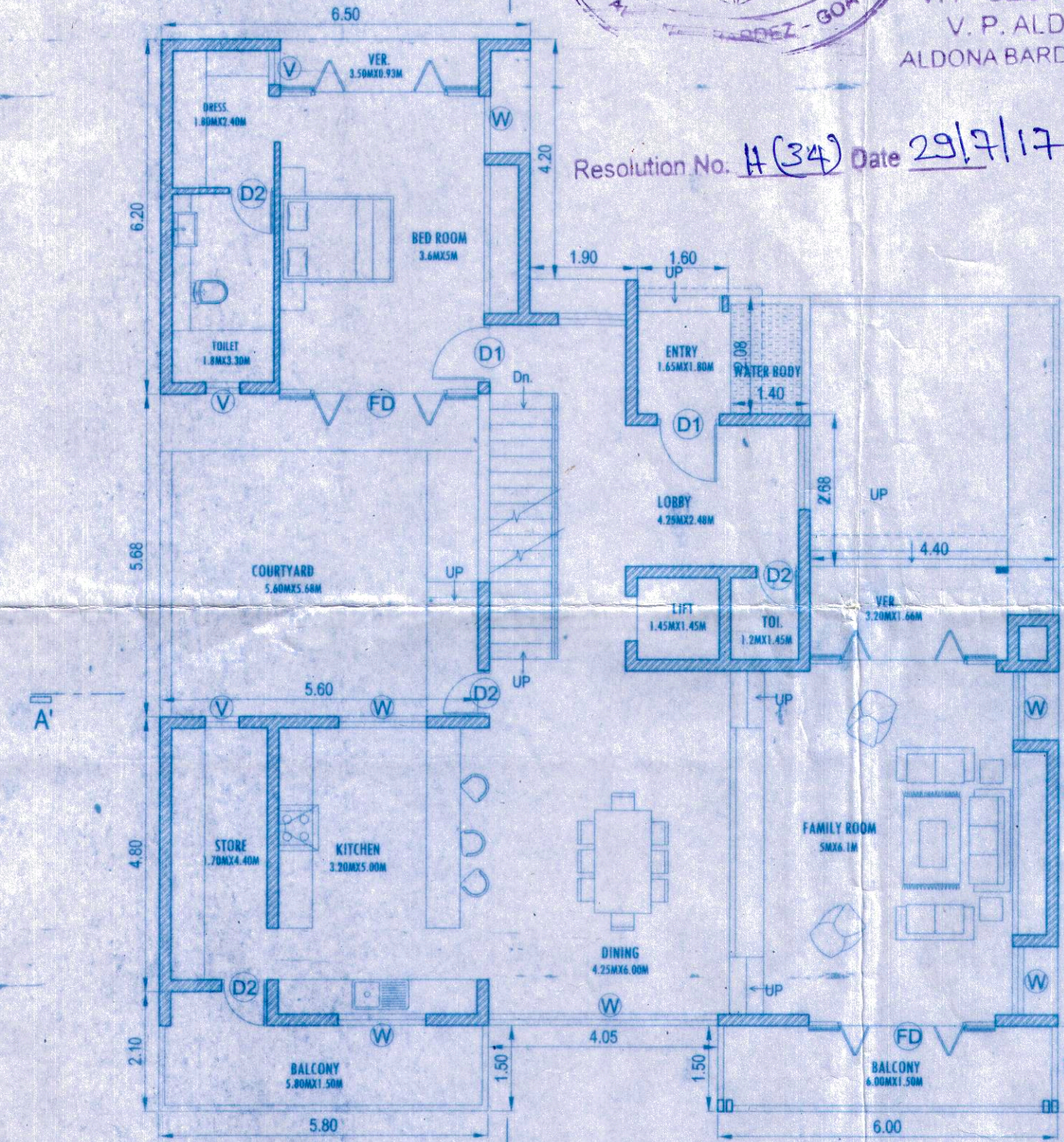
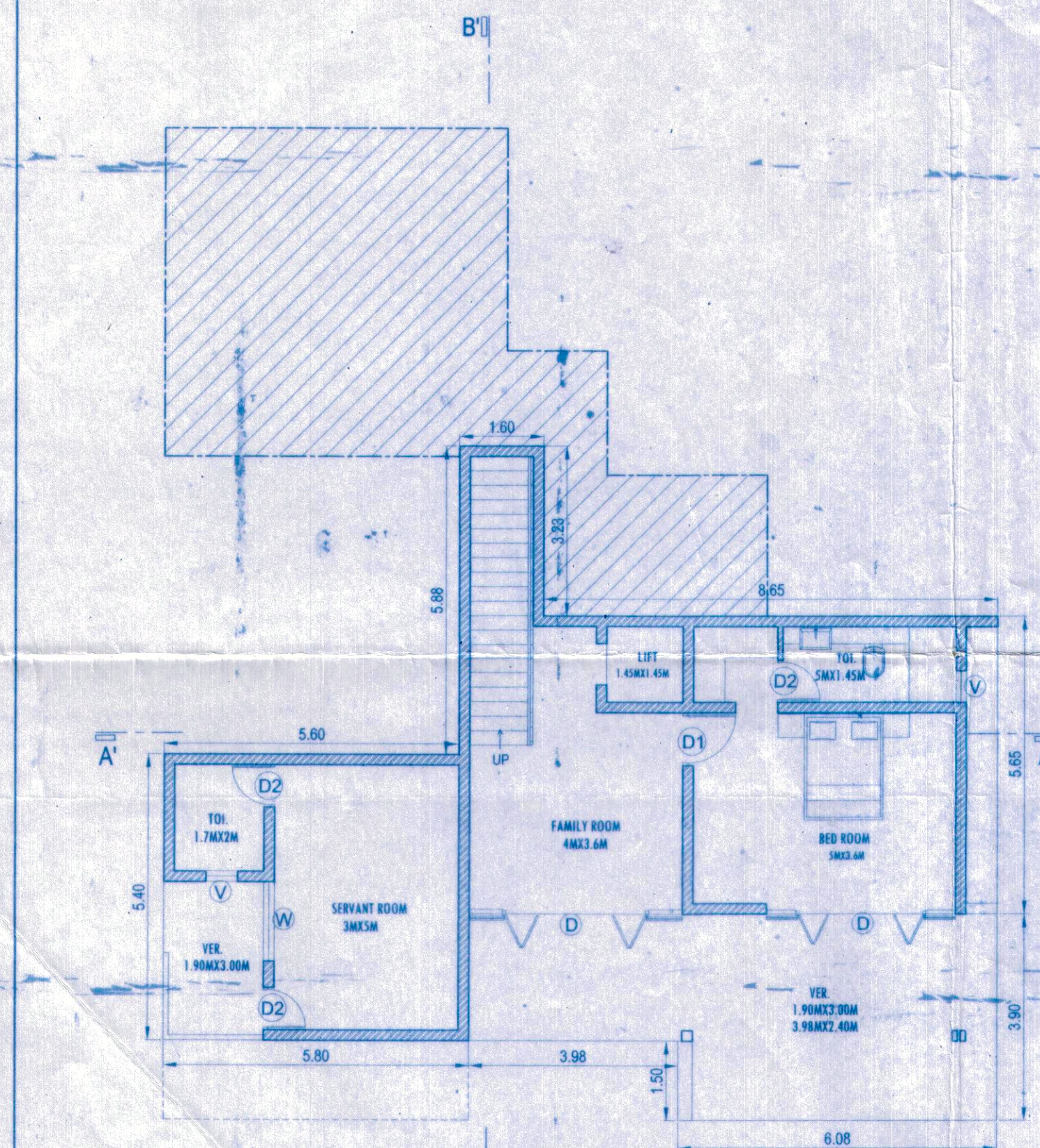


VILLAGE PANCHAYAT  
 V. P. SECRETARY  
 V. P. ALDONA  
 ALDONA BARDEZ - GOA

Resolution No. H(34) Date 29/7/17

Approved with condition vide  
 L. No. 102/23841/(2017) 1967  
 Dy. Town Planner  
 Town & Country Planning Dept.  
 Govt. of Goa, Mapusa



L GROUND FLOOR AREA LINE DIAGRAM

GROUND FLOOR AREA LINE DIAGRAM

FIRST FLOOR AREA LINE DIAGRAM

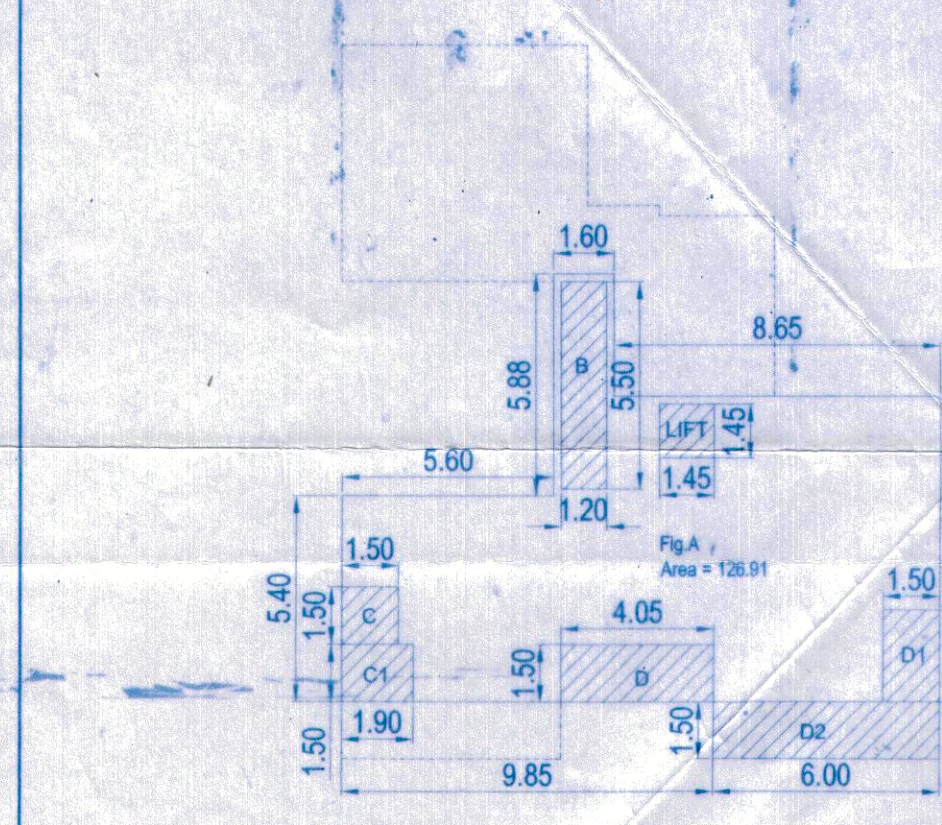


FIG. A AREA = 1126.91 M<sup>2</sup>  
 TOTAL BUILT UP AREA ON L.G.FLOOR = 126.91 M<sup>2</sup>  
 DEDUCT:  
 B = 1.20 X 5.50 = 6.60 M<sup>2</sup>  
 LIR = 1.45 X 1.45 = 2.10 M<sup>2</sup>  
 C = 1.50 X 1.50 = 2.25 M<sup>2</sup>  
 D = 4.05 X 1.50 = 6.08 M<sup>2</sup>  
 D1 = 1.50 X 2.40 = 3.60 M<sup>2</sup>  
 D2 = 6.00 X 1.50 = 9.00 M<sup>2</sup>  
 = 32.48 M<sup>2</sup>  
 TOTAL NET FLOOR AREA = 126.91 - 32.48  
 = 94.43 M<sup>2</sup>

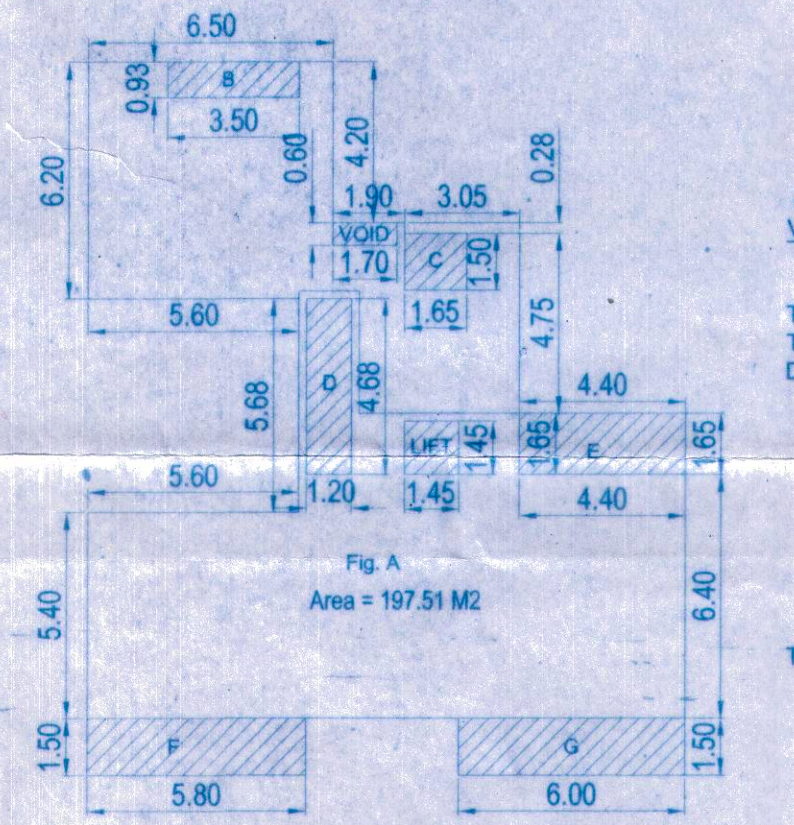


FIG. A AREA = 197.51 M<sup>2</sup>  
 VOID = 1.70 X 0.60 = 1.02 M<sup>2</sup>  
 = 196.49 M<sup>2</sup>  
 TOTAL BUILT UP AREA ON G.FLOOR = 196.49 M<sup>2</sup>  
 TOTAL COVERED AREA = 196.49 M<sup>2</sup>  
 DEDUCT:  
 B = 3.50 X 0.93 = 3.26 M<sup>2</sup>  
 C = 1.95 X 1.50 = 2.93 M<sup>2</sup>  
 D = 1.90 X 4.05 = 7.70 M<sup>2</sup>  
 LIR = 1.45 X 1.45 = 2.10 M<sup>2</sup>  
 E = 4.40 X 1.85 = 8.14 M<sup>2</sup>  
 F = 5.80 X 1.50 = 8.70 M<sup>2</sup>  
 G = 6.00 X 1.50 = 9.00 M<sup>2</sup>  
 = 38.41 M<sup>2</sup>  
 TOTAL NET FLOOR AREA = 196.49 - 38.41  
 = 158.08 M<sup>2</sup>

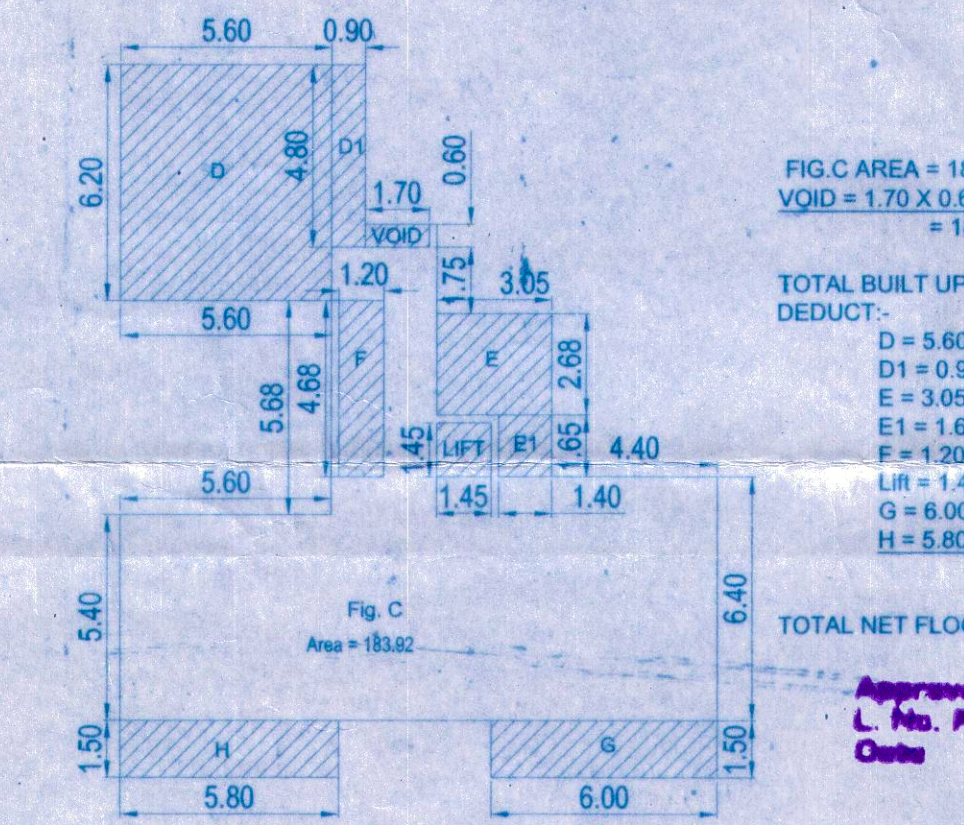
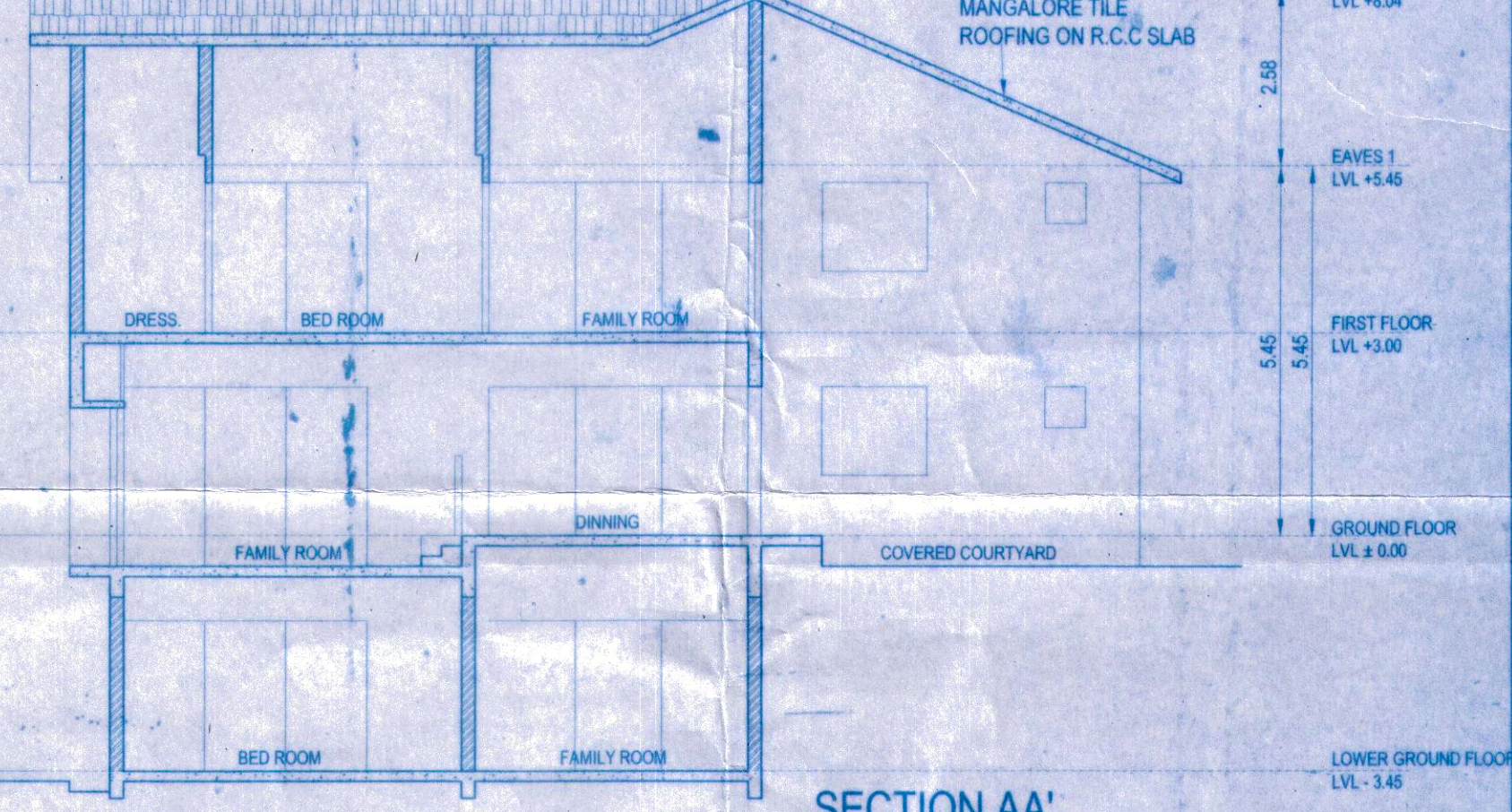


FIG. C AREA = 183.92 M<sup>2</sup>  
 VOID = 1.70 X 0.60 = 1.02 M<sup>2</sup>  
 = 182.90 M<sup>2</sup>  
 TOTAL BUILT UP AREA ON F.FLOOR = 182.90 M<sup>2</sup>  
 DEDUCT:  
 D = 5.60 X 6.20 = 34.72 M<sup>2</sup>  
 D1 = 0.90 X 4.80 = 4.32 M<sup>2</sup>  
 E = 3.05 X 2.68 = 8.17 M<sup>2</sup>  
 E1 = 1.65 X 1.40 = 2.31 M<sup>2</sup>  
 F = 1.20 X 4.98 = 5.98 M<sup>2</sup>  
 LIR = 1.45 X 1.45 = 2.10 M<sup>2</sup>  
 G = 6.00 X 1.50 = 9.00 M<sup>2</sup>  
 H = 5.80 X 1.50 = 8.70 M<sup>2</sup>  
 = 74.34 M<sup>2</sup>  
 TOTAL NET FLOOR AREA = 182.90 - 74.34  
 = 108.56 M<sup>2</sup>

Approved with condition vide  
 L. No. PHCA/NOCC/Consent/15/010/18/1628  
 Date 25-07-2017



SECTION AA' UNIT No.- TYPE A

- NOTES:
- ALL DIMENSIONS ARE IN MM EXCEPT FOR THE SITE PLAN.
  - DRAWINGS TO BE READ & NOT TO BE SCALED.
  - ALL DRAWINGS ARE TO A SCALE OF 1:100 UNLESS SPECIFIED.
  - 
  - 
  - 
  -

**PROJECT:**  
**PROPOSED RESIDENTIAL VILLS & COMPOUND WALL ON LAND BEARING Sy. NO. 296 / 51 AT ALDONA VILLAGE, TALUKA BARDEZ - GOA**

SIGNATURE OF APPLICANT'S  
 FOR SUSHRELA HOUES & PROPERTIES PVT. LTD.  
 DIRECTOR

SIGNATURE OF ARCHITECT  
 ARMINIO BIBEIRO DE SANTANA  
 ARCHITECT  
 H. No. 161, Opp. St. Sebastian Chapel, Fontainhas,  
 Panjim Goa. Ph: (0) 2226837 (R) 2424042  
 Reg. No. AR/016/2010

PLAN, ELEVATION SECTION AREA LINE DIAGRAM	SUBMISSION DRAWING
SCALE - 1:100, 200, 500	DRG. NO
DATE: 30/08/2016	03
DRAWN	