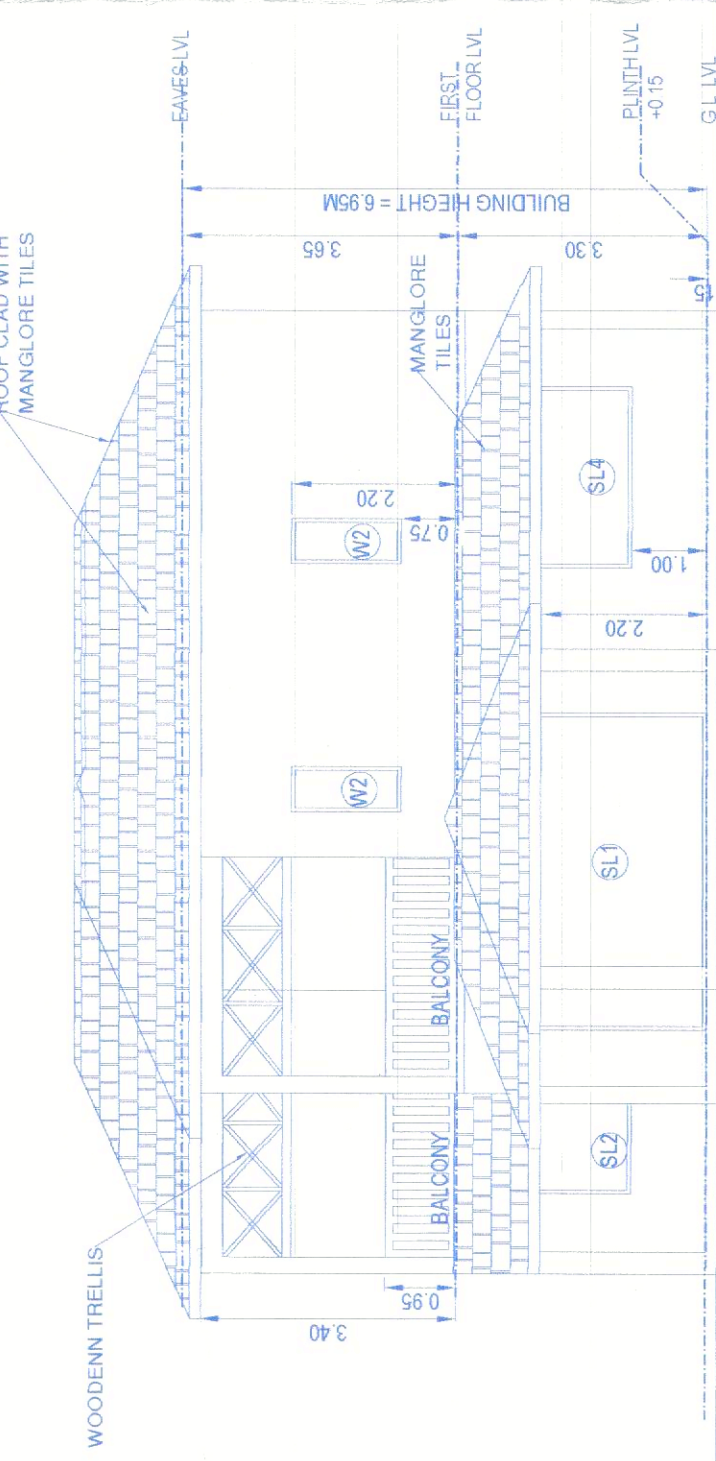
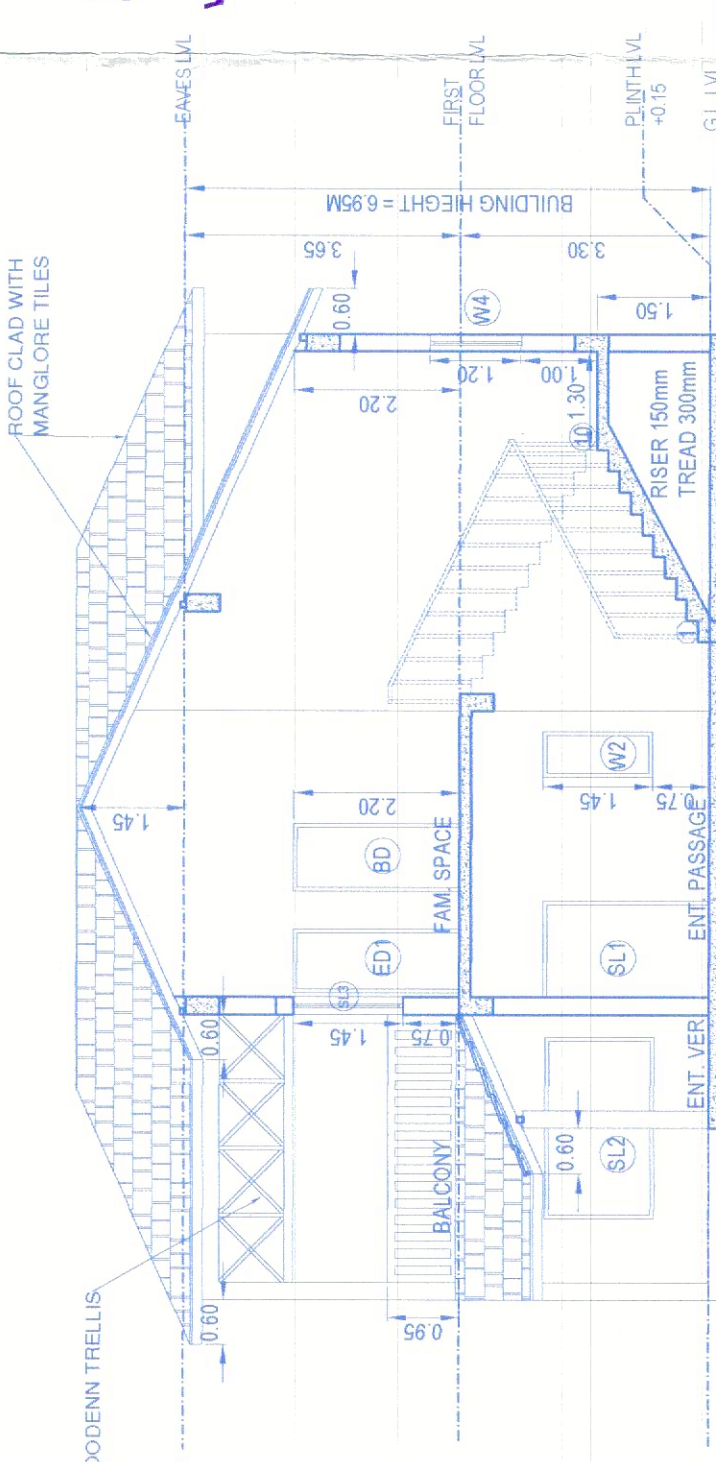




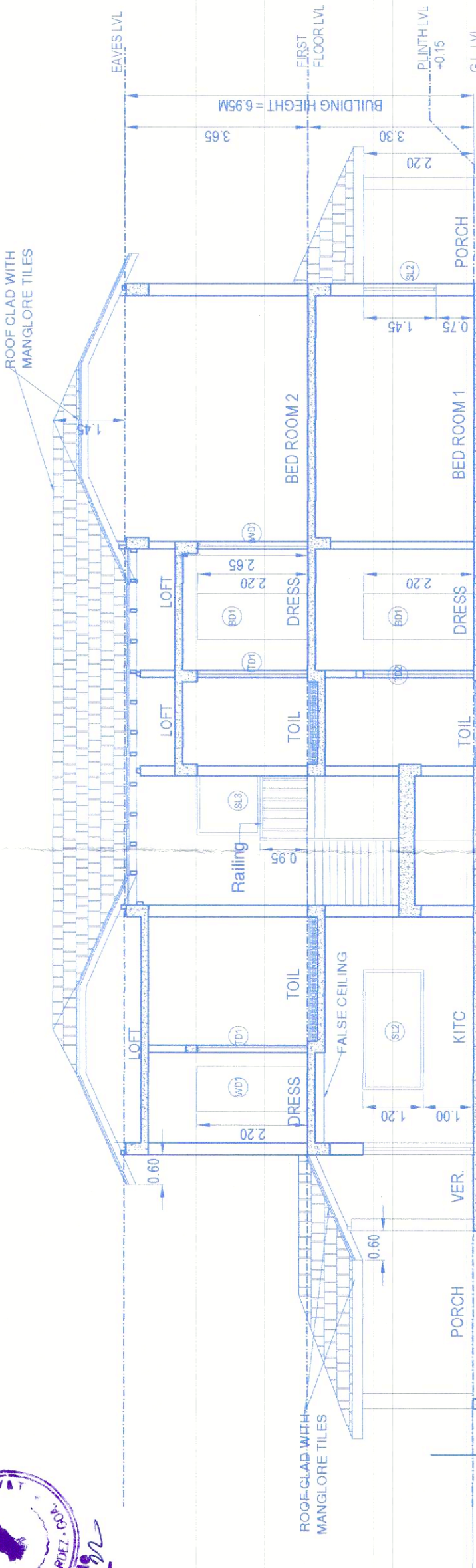
Approved on condition  
R. No. 216/53 at 13/04/22  
Taluka Bardez, Goa



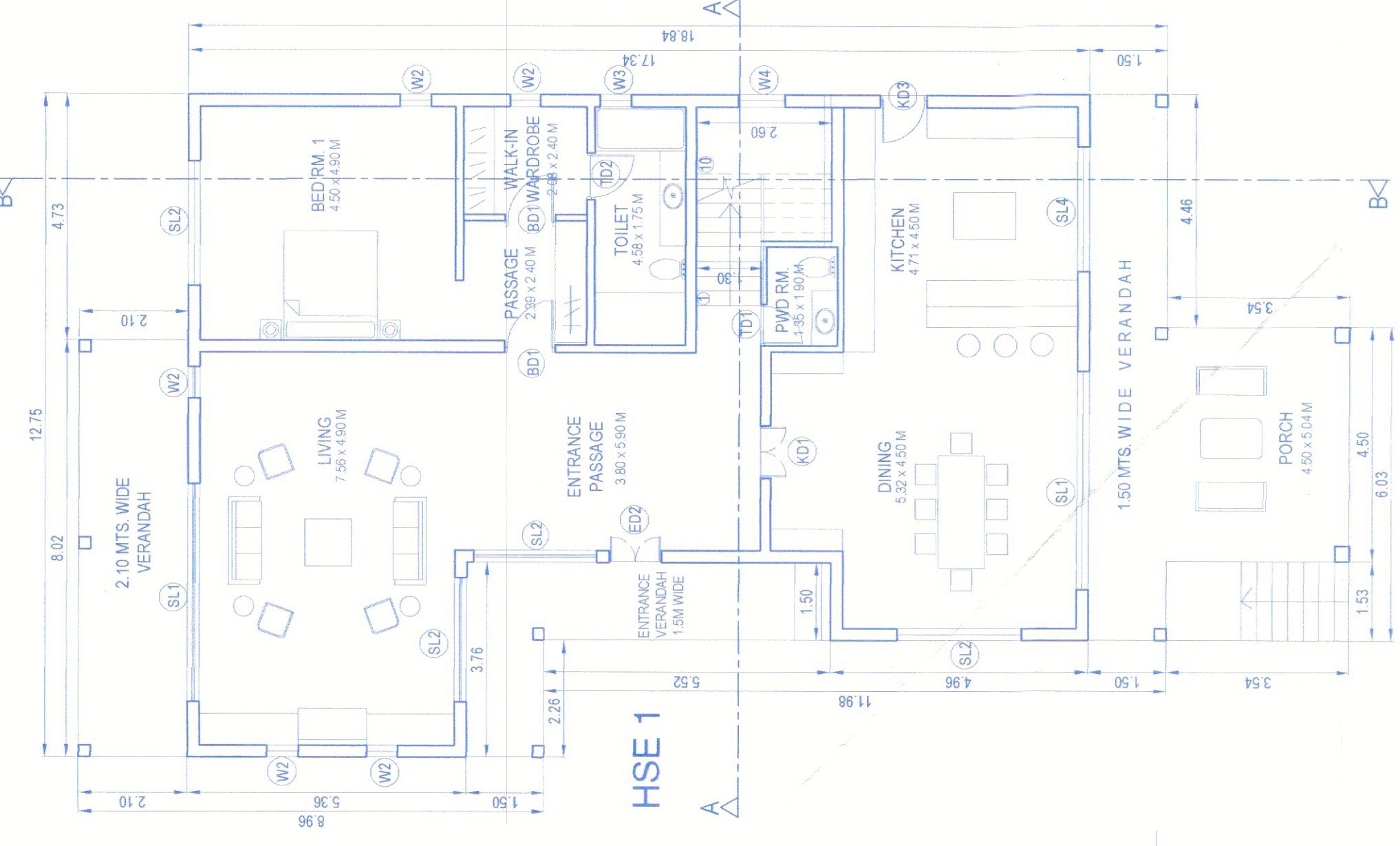
EAST ELEVATION



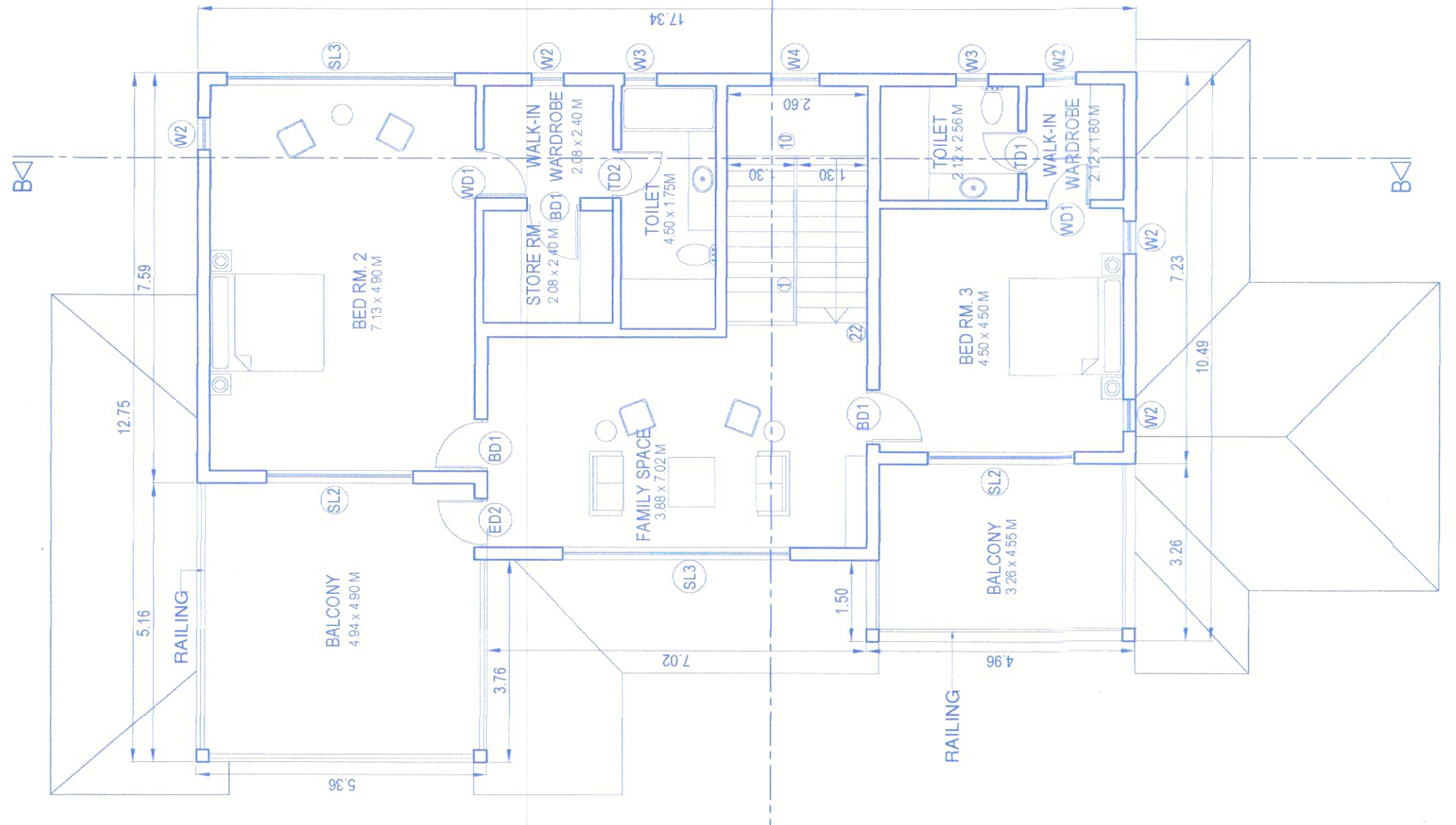
SECTION AA



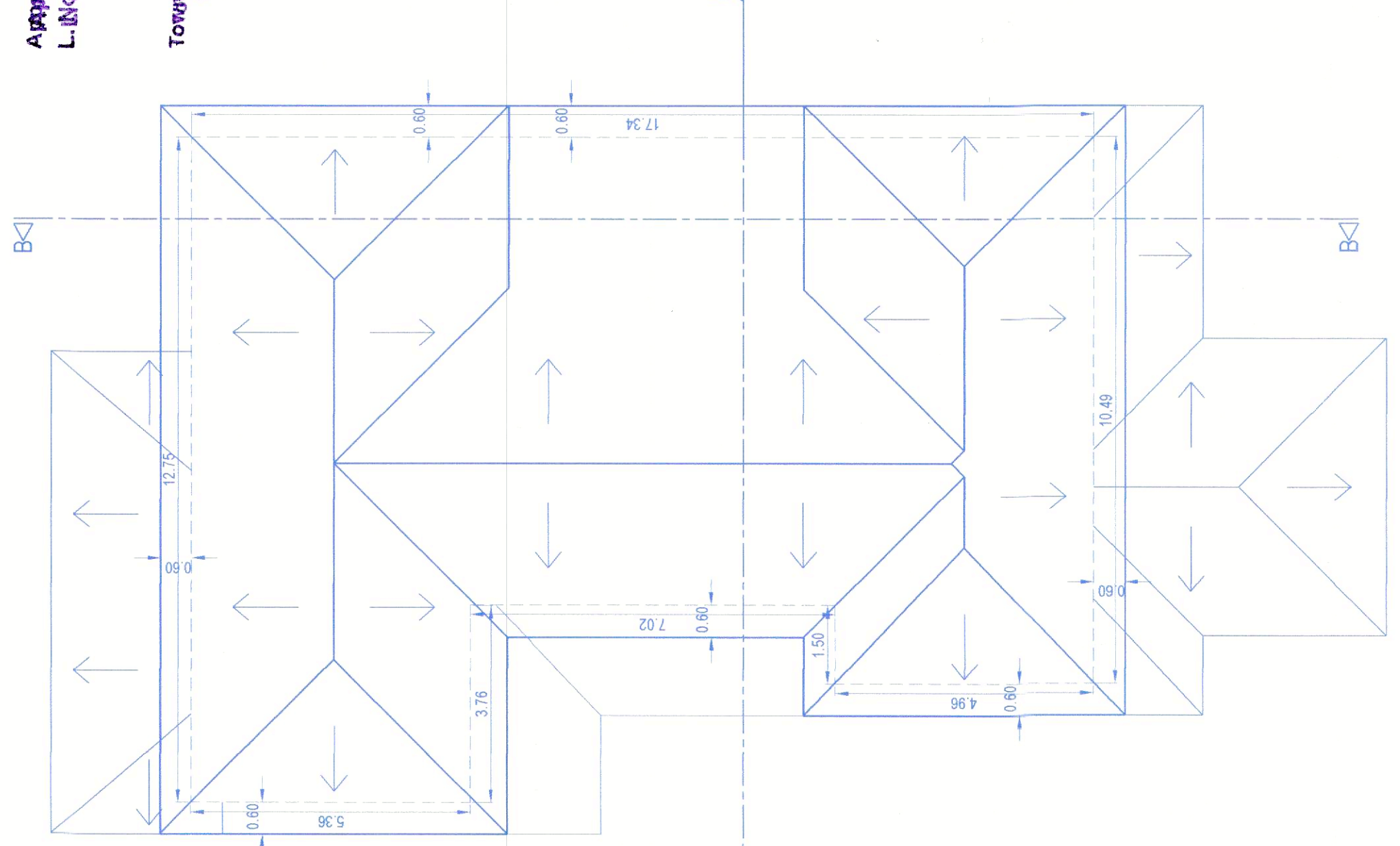
SECTION BB



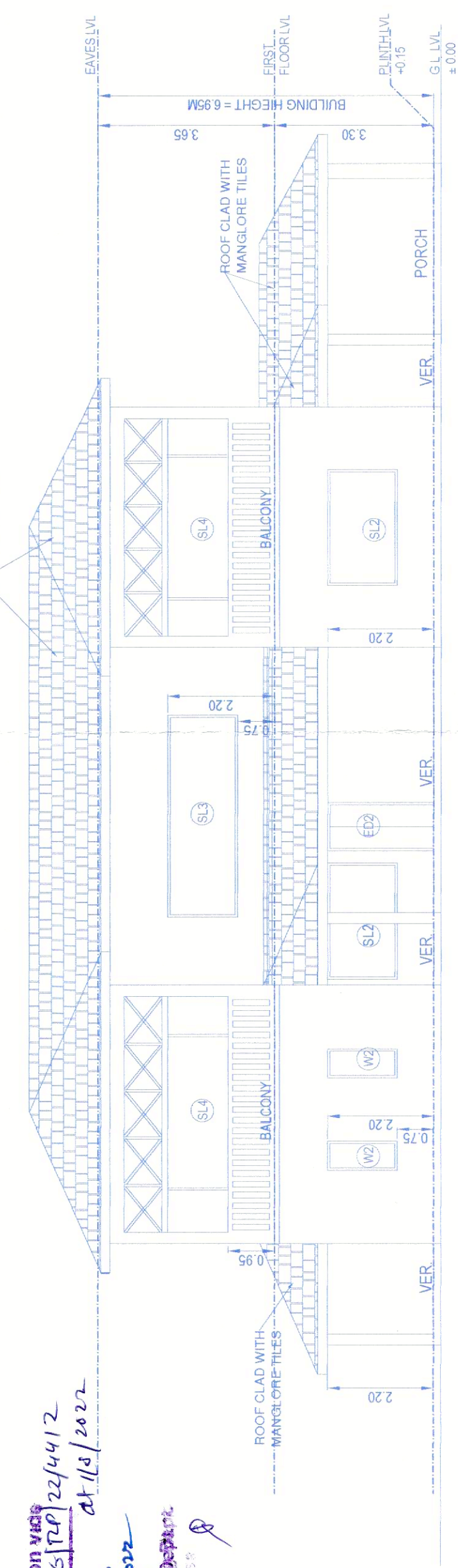
GROUND FLOOR PLAN



FIRST FLOOR PLAN



ROOF PLAN



SOUTH ELEVATION

WINDOW SCHEDULE		
NO.	WIDTH	HEIGHT
W1	900	2200
W2	1000	2200
W3	900	2200
W4	900	2200
W5	900	2200
W6	900	2200
W7	900	2200
W8	900	2200
W9	900	2200
W10	900	2200
W11	900	2200
W12	900	2200
W13	900	2200
W14	900	2200
W15	900	2200
W16	900	2200
W17	900	2200
W18	900	2200
W19	900	2200
W20	900	2200
W21	900	2200
W22	900	2200
W23	900	2200
W24	900	2200
W25	900	2200
W26	900	2200
W27	900	2200
W28	900	2200
W29	900	2200
W30	900	2200
W31	900	2200
W32	900	2200
W33	900	2200
W34	900	2200
W35	900	2200
W36	900	2200
W37	900	2200
W38	900	2200
W39	900	2200
W40	900	2200
W41	900	2200
W42	900	2200
W43	900	2200
W44	900	2200
W45	900	2200
W46	900	2200
W47	900	2200
W48	900	2200
W49	900	2200
W50	900	2200
W51	900	2200
W52	900	2200
W53	900	2200
W54	900	2200
W55	900	2200
W56	900	2200
W57	900	2200
W58	900	2200
W59	900	2200
W60	900	2200
W61	900	2200
W62	900	2200
W63	900	2200
W64	900	2200
W65	900	2200
W66	900	2200
W67	900	2200
W68	900	2200
W69	900	2200
W70	900	2200
W71	900	2200
W72	900	2200
W73	900	2200
W74	900	2200
W75	900	2200
W76	900	2200
W77	900	2200
W78	900	2200
W79	900	2200
W80	900	2200
W81	900	2200
W82	900	2200
W83	900	2200
W84	900	2200
W85	900	2200
W86	900	2200
W87	900	2200
W88	900	2200
W89	900	2200
W90	900	2200
W91	900	2200
W92	900	2200
W93	900	2200
W94	900	2200
W95	900	2200
W96	900	2200
W97	900	2200
W98	900	2200
W99	900	2200
W100	900	2200

DOOR SCHEDULE		
NO.	WIDTH	HEIGHT
D1	900	2200
D2	1000	2200
D3	900	2200
D4	900	2200
D5	900	2200
D6	900	2200
D7	900	2200
D8	900	2200
D9	900	2200
D10	900	2200
D11	900	2200
D12	900	2200
D13	900	2200
D14	900	2200
D15	900	2200
D16	900	2200
D17	900	2200
D18	900	2200
D19	900	2200
D20	900	2200
D21	900	2200
D22	900	2200
D23	900	2200
D24	900	2200
D25	900	2200
D26	900	2200
D27	900	2200
D28	900	2200
D29	900	2200
D30	900	2200
D31	900	2200
D32	900	2200
D33	900	2200
D34	900	2200
D35	900	2200
D36	900	2200
D37	900	2200
D38	900	2200
D39	900	2200
D40	900	2200
D41	900	2200
D42	900	2200
D43	900	2200
D44	900	2200
D45	900	2200
D46	900	2200
D47	900	2200
D48	900	2200
D49	900	2200
D50	900	2200
D51	900	2200
D52	900	2200
D53	900	2200
D54	900	2200
D55	900	2200
D56	900	2200
D57	900	2200
D58	900	2200
D59	900	2200
D60	900	2200
D61	900	2200
D62	900	2200
D63	900	2200
D64	900	2200
D65	900	2200
D66	900	2200
D67	900	2200
D68	900	2200
D69	900	2200
D70	900	2200
D71	900	2200
D72	900	2200
D73	900	2200
D74	900	2200
D75	900	2200
D76	900	2200
D77	900	2200
D78	900	2200
D79	900	2200
D80	900	2200
D81	900	2200
D82	900	2200
D83	900	2200
D84	900	2200
D85	900	2200
D86	900	2200
D87	900	2200
D88	900	2200
D89	900	2200
D90	900	2200
D91	900	2200
D92	900	2200
D93	900	2200
D94	900	2200
D95	900	2200
D96	900	2200
D97	900	2200
D98	900	2200
D99	900	2200
D100	900	2200

AREA CALCULATIONS FOR GROUND FLOOR

1. AREA OF FIG. A = 245.91 M<sup>2</sup>
2. DEDUCT VOID = NIL
3. PROPOSED B.U. AREA = 245.91 M<sup>2</sup>
4. AREA EXCLUDED FROM COVERAGE  
UNSTORIED PORCH = 4.50 x 3.54 = 15.93 M<sup>2</sup>
5. PROPOSED COVERED AREA = 239.98 M<sup>2</sup>
6. DEDUCT AREAS FOR FAR CALCULATIONS  
RECT. AREA: a = 2 x 8.02 x 1.50 = 24.06 M<sup>2</sup>  
RECT. AREA: b = 3.75 x 1.50 = 5.64 M<sup>2</sup>  
RECT. AREA: c = 1.50 x 5.52 = 8.28 M<sup>2</sup>  
RECT. AREA: d = 2.03 x 1.25 = 2.54 M<sup>2</sup>  
RECT. AREA: e = 2.70 x 2.00 = 5.40 M<sup>2</sup>  
RECT. AREA: f = 10.49 x 1.50 = 15.74 M<sup>2</sup>  
UNSTORIED PORCH = 3.54 x 4.50 = 15.93 M<sup>2</sup>  
TOTAL DEDUCTION = 79.20 M<sup>2</sup>
7. NET FLOOR AREA OF GROUND FLOOR  
= 245.91 - 79.20 = 166.71 M<sup>2</sup>

AREA CALCULATIONS FOR FIRST FLOOR

1. AREAS OF FIG. B = 183.45 M<sup>2</sup>
2. DEDUCT VOIDS = NIL
3. BUILT-UP AREA = 183.45 M<sup>2</sup>
4. DEDUCT AREAS FOR FAR CALCULATIONS  
RECT. AREA: a = 1.50 x 5.39 = 8.04 M<sup>2</sup>  
RECT. AREA: b = 4.85 x 2.00 = 9.70 M<sup>2</sup>  
RECT. AREA: c = 1.50 x 4.08 = 6.12 M<sup>2</sup>  
TOTAL DEDUCTION = 27.57 M<sup>2</sup>
5. NET FLOOR AREA OF GROUND FLOOR  
= 183.45 - 27.57 = 155.88 M<sup>2</sup>

SANCTION DRAWING

PROPOSED GROUP HOUSING ON LAND BEARING  
SURVEY NO. 216/53 AT VILLAGE ASSAGAO,  
TALUKA BARDEZ - GOA  
HOUSE NO. 1

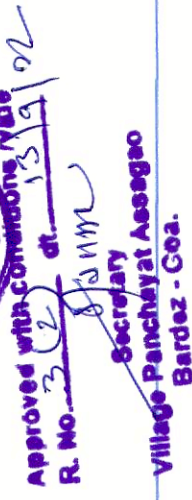
APPLICANT'S SIGN:-

For COSME COSTA & ASSOCIATES  
Partner

ARCHITECT'S SIGN:-

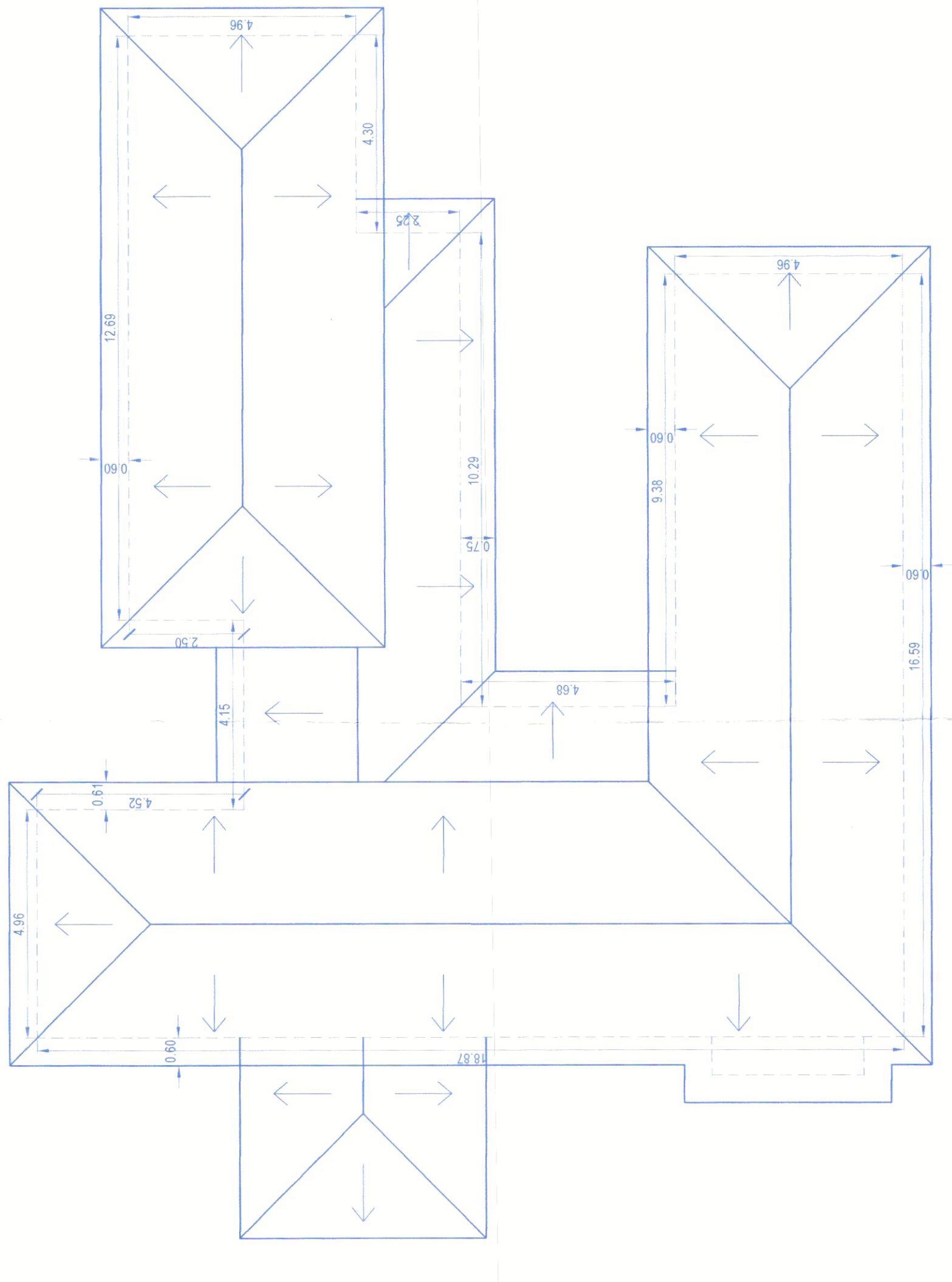
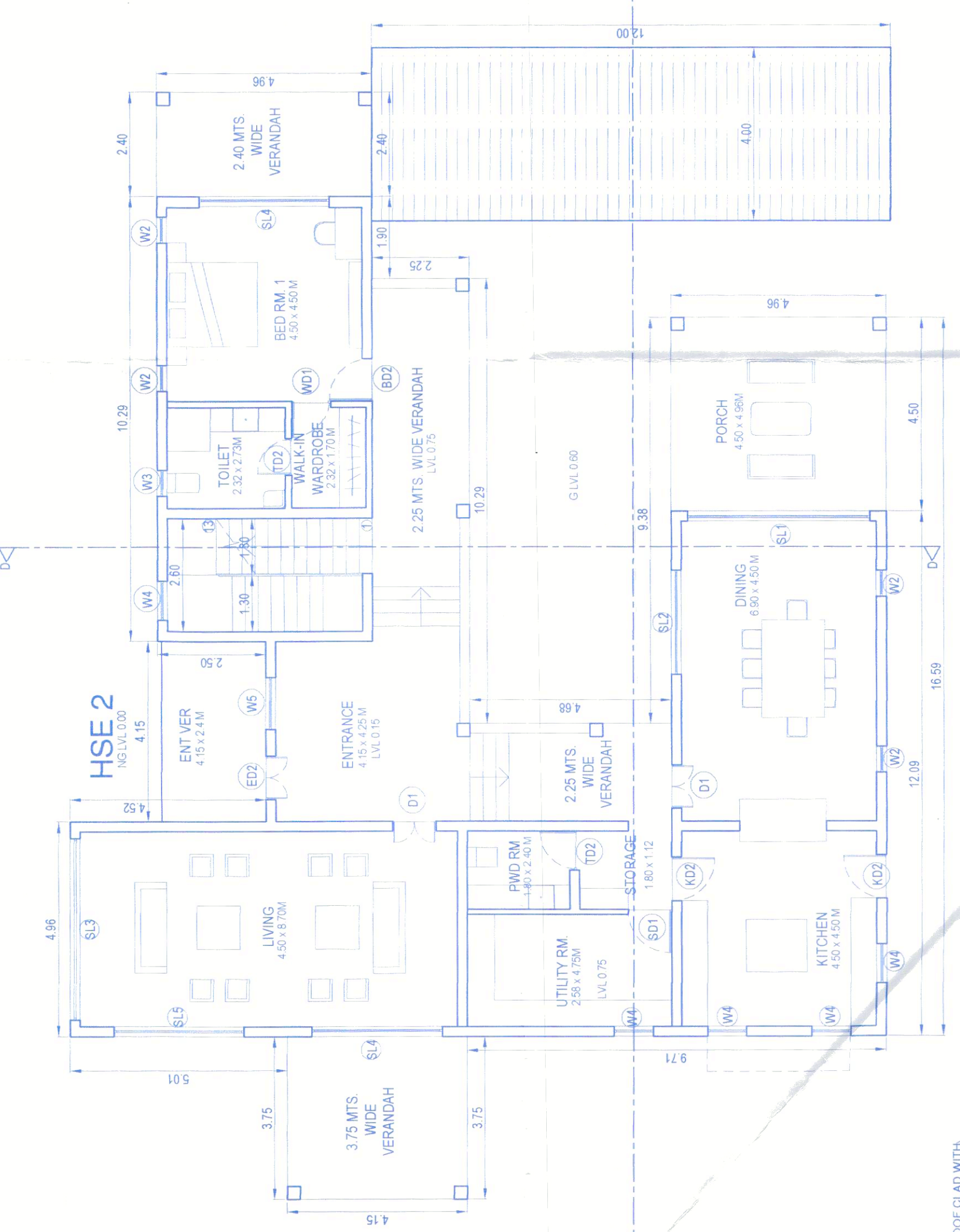
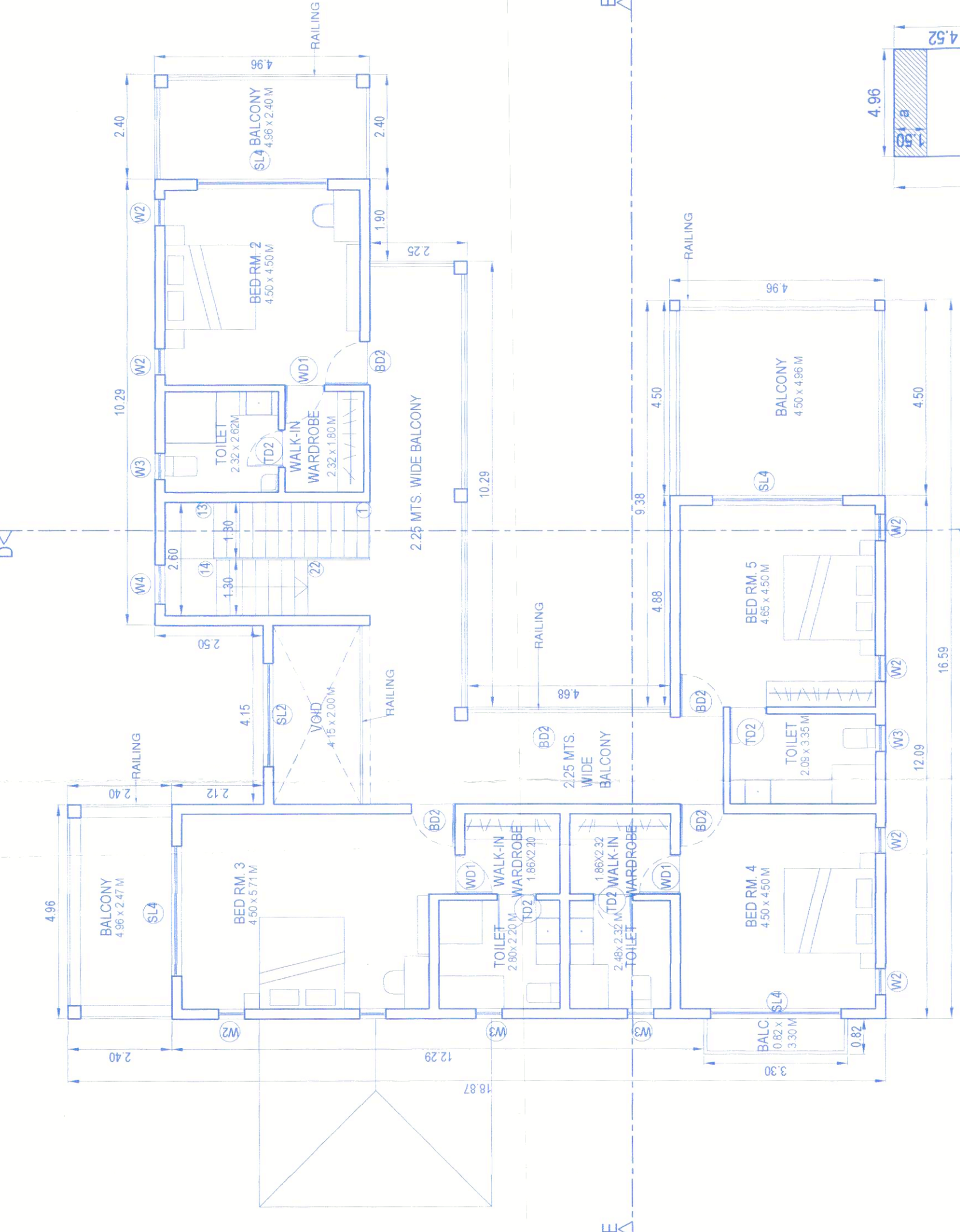
ARMANDO PIRES DE SANTANA  
H. No. 81, 1st, 2nd, 3rd, 4th, 5th, 6th, 7th, 8th, 9th, 10th, 11th, 12th, 13th, 14th, 15th, 16th, 17th, 18th, 19th, 20th, 21st, 22nd, 23rd, 24th, 25th, 26th, 27th, 28th, 29th, 30th, 31st, 32nd, 33rd, 34th, 35th, 36th, 37th, 38th, 39th, 40th, 41st, 42nd, 43rd, 44th, 45th, 46th, 47th, 48th, 49th, 50th, 51st, 52nd, 53rd, 54th, 55th, 56th, 57th, 58th, 59th, 60th, 61st, 62nd, 63rd, 64th, 65th, 66th, 67th, 68th, 69th, 70th, 71st, 72nd, 73rd, 74th, 75th, 76th, 77th, 78th, 79th, 80th, 81st, 82nd, 83rd, 84th, 85th, 86th, 87th, 88th, 89th, 90th, 91st, 92nd, 93rd, 94th, 95th, 96th, 97th, 98th, 99th, 100th, 101st, 102nd, 103rd, 104th, 105th, 106th, 107th, 108th, 109th, 110th, 111th, 112th, 113th, 114th, 115th, 116th, 117th, 118th, 119th, 120th, 121st, 122nd, 123rd, 124th, 125th, 126th, 127th, 128th, 129th, 130th, 131st, 132nd, 133rd, 134th, 135th, 136th, 137th, 138th, 139th, 140th, 141st, 142nd, 143rd, 144th, 145th, 146th, 147th, 148th, 149th, 150th, 151st, 152nd, 153rd, 154th, 155th, 156th, 157th, 158th, 159th, 160th, 161st, 162nd, 163rd, 164th, 165th, 166th, 167th, 168th, 169th, 170th, 171st, 172nd, 173rd, 174th, 175th, 176th, 177th, 178th, 179th, 180th, 181st, 182nd, 183rd, 184th, 185th, 186th, 187th, 188th, 189th, 190th, 191st, 192nd, 193rd, 194th, 195th, 196th, 197th, 198th, 199th, 200th, 201st, 202nd, 203rd, 204th, 205th, 206th, 207th, 208th, 209th, 210th, 211st, 212nd, 213th, 214th, 215th, 216th, 217th, 218th, 219th, 220th, 221st, 222nd, 223rd, 224th, 225th, 226th, 227th, 228th, 229th, 230th, 231st, 232nd, 233rd, 234th, 235th, 236th, 237th, 238th, 239th, 240th, 241st, 242nd, 243rd, 244th, 245th, 246th, 247th, 248th, 249th, 250th, 251st, 252nd, 253rd, 254th, 255th, 256th, 257th, 258th, 259th, 260th, 261st, 262nd, 263rd, 264th, 265th, 266th, 267th, 268th, 269th, 270th, 271st, 272nd, 273rd, 274th, 275th, 276th, 277th, 278th, 279th, 280th, 281st, 282nd, 283rd, 284th, 285th, 286th, 287th, 288th, 289th, 290th, 291st, 292nd, 293rd, 294th, 295th, 296th, 297th, 298th, 299th, 300th, 301st, 302nd, 303rd, 304th, 305th, 306th, 307th, 308th, 309th, 310th, 311st, 312nd, 313th, 314th, 315th, 316th, 317th, 318th, 319th, 320th, 321st, 322nd, 323rd, 324th, 325th, 326th, 327th, 328th, 329th, 330th, 331st, 332nd, 333rd, 334th, 335th, 336th, 337th, 338th, 339th, 340th, 341st, 342nd, 343rd, 344th, 345th, 346th, 347th, 348th, 349th, 350th, 351st, 352nd, 353rd, 354th, 355th, 356th, 357th, 358th, 359th, 360th, 361st, 362nd, 363rd, 364th, 365th, 366th, 367th, 368th, 369th, 370th, 371st, 372nd, 373rd, 374th, 375th, 376th, 377th, 378th, 379th, 380th, 381st, 382nd, 383rd, 384th, 385th, 386th, 387th, 388th, 389th, 390th, 391st, 392nd, 393rd, 394th, 395th, 396th, 397th, 398th, 399th, 400th, 401st, 402nd, 403rd, 404th, 405th, 406th, 407th, 408th, 409th, 410th, 411st, 412nd, 413th, 414th, 415th, 416th, 417th, 418th, 419th, 420th, 421st, 422nd, 423rd, 424th, 425th, 426th, 427th, 428th, 429th, 430th, 431st, 432nd, 433rd, 434th, 435th, 436th, 437th, 438th, 439th, 440th, 441st, 442nd, 443rd, 444th, 445th, 446th, 447th, 448th, 449th, 450th, 451st, 452nd, 453rd, 454th, 455th, 456th, 457th, 458th, 459th, 460th, 461st, 462nd, 463rd, 464th, 465th, 466th, 467th, 468th, 469th, 470th, 471st, 472nd, 473rd, 474th, 475th, 476th, 477th, 478th, 479th, 480th, 481st, 482nd, 483rd, 484th, 485th, 486th, 487th, 488th, 489th, 490th, 491st, 492nd, 493rd, 494th, 495th, 496th, 497th, 498th, 499th, 500th, 501st, 502nd, 503rd, 504th, 505th, 506th, 507th, 508th, 509th, 510th, 511st, 512nd, 513th, 514th, 515th, 516th, 517th, 518th, 519th, 520th, 521st, 522nd, 523rd, 524th, 525th, 526th, 527th, 528th, 529th, 530th, 531st, 532nd, 533rd, 534th, 535th, 536th, 537th, 538th, 539th, 540th, 541st, 542nd, 543rd, 544th, 545th, 546th, 547th, 548th, 549th, 550th, 551st, 552nd, 553rd, 554th, 555th, 556th, 557th, 558th, 559th, 560th, 561st, 562nd, 563rd, 564th, 565th, 566th, 567th, 568th, 569th, 570th, 571st, 572nd, 573rd, 574th, 575th, 576th, 577th, 578th, 579th, 580th, 581st, 582nd, 583rd, 584th, 585th, 586th, 587th, 588th, 589th, 590th, 591st, 592nd, 593rd, 594th, 595th, 596th, 597th, 598th, 599th, 600th, 601st, 602nd, 603rd, 604th, 605th, 606th, 607th, 608th, 609th, 610th, 611st, 612nd, 613th, 614th, 615th, 616th, 617th, 618th, 619th, 620th, 621st, 622nd, 623rd, 624th, 625th, 626th, 627th, 628th, 629th, 630th, 631st, 632nd, 633rd, 634th, 635th, 636th, 637th, 638th, 639th, 640th, 641st, 642nd, 643rd, 644th, 645th, 646th, 647th, 648th, 649th, 650th, 651st, 652nd, 653rd, 654th, 655th, 656th, 657th, 658th, 659th, 660th, 661st, 662nd, 663rd, 664th, 665th, 666th, 667th, 668th, 669th, 670th, 671st, 672nd, 673rd, 674th, 675th, 676th, 677th, 678th, 679th, 680th, 681st, 682nd, 683rd, 684th, 685th, 686th, 687th, 688th, 689th, 690th, 691st, 692nd, 693rd, 694th, 695th, 696th, 697th, 698th, 699th, 700th, 701st, 702nd, 703rd, 704th, 705th, 706th, 707th, 708th, 709th, 710th, 711st, 712nd, 713th, 714th, 715th, 716th, 717th, 718th, 719th, 720th, 721st, 722nd, 723rd, 724th, 725th, 726th, 727th, 728th, 729th, 730th, 731st, 732nd, 733rd, 734th, 735th, 736th, 737th, 738th, 739th, 740th, 741st, 742nd, 743rd, 744th, 745th, 746th, 747th, 748th, 749th, 750th, 751st, 752nd, 753rd, 754th, 755th, 756th, 757th, 758th, 759th, 760th, 761st, 762nd, 763rd, 764th, 765th, 766th, 767th, 768th, 769th, 770th, 771st, 772nd, 773rd, 774th, 775th, 776th, 777th, 778th, 779th, 780th, 781st, 782nd, 783rd, 784th, 785th, 786th, 787th, 788th, 789th, 790th, 791





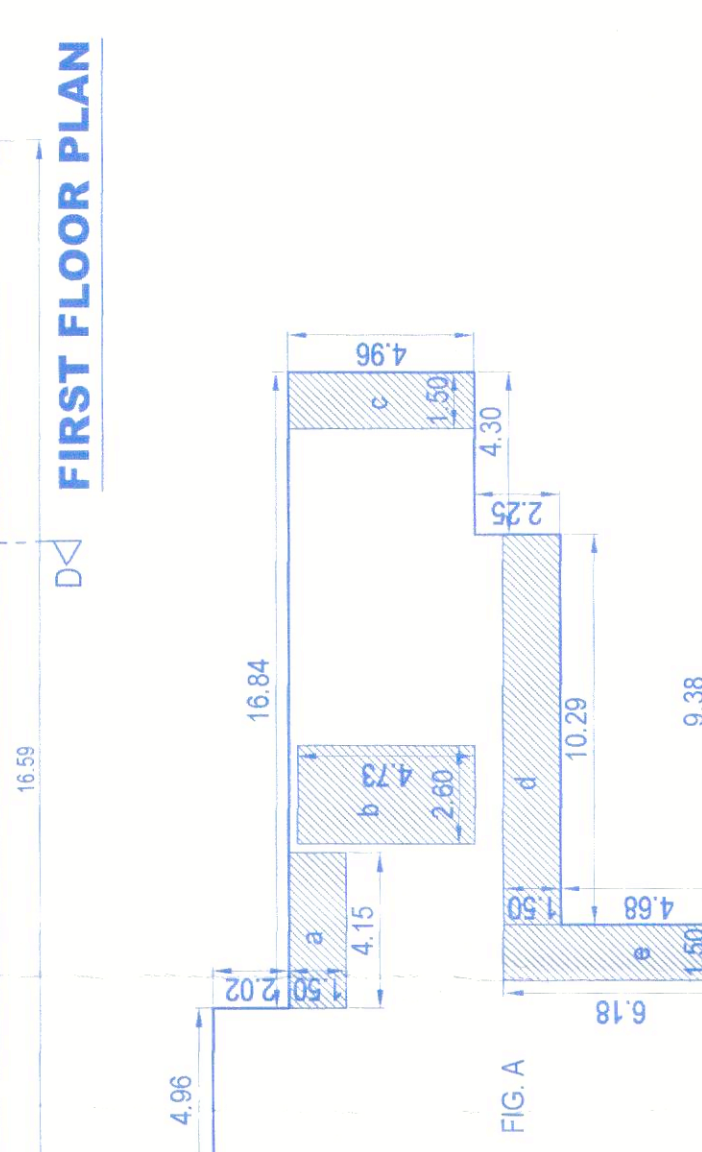
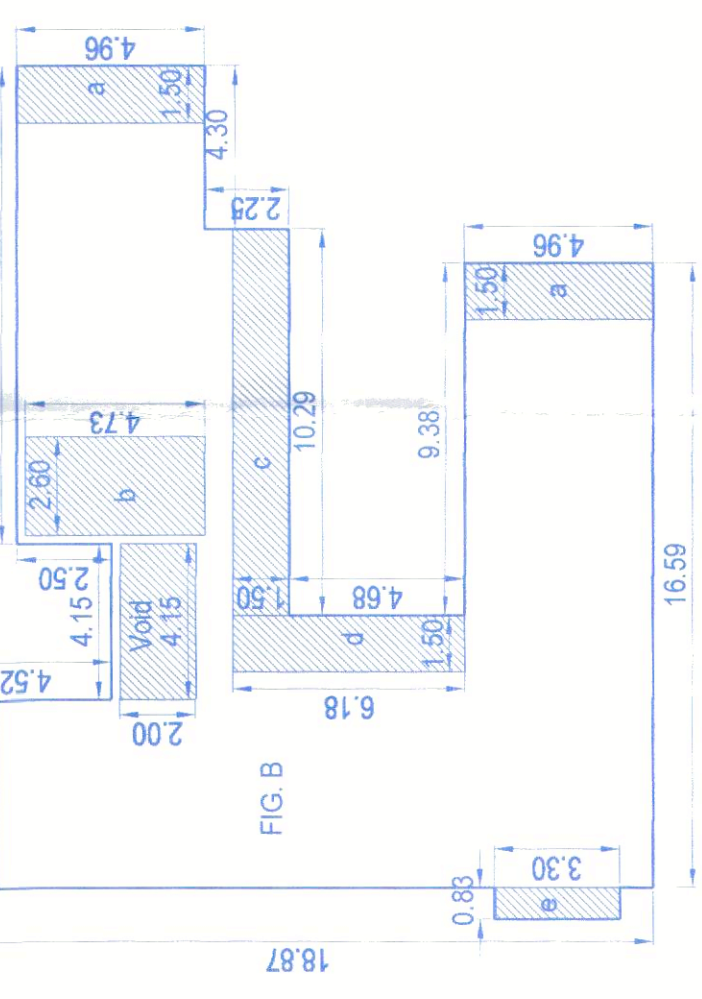
WINDOW SCHEDULE		
NO.	WIDTH	HEIGHT
S1	4'20"	2'20"
S2	4'20"	2'20"
S3	4'20"	1'45"
S4	3'00"	2'20"
S5	3'00"	1'45"
W1	1'50"	1'80"
W2	6'00"	1'45"
W3	6'00"	1'20"
W4	8'00"	1'20"
W5	1'20"	1'45"
DOOR SCHEDULE		
NO.	WIDTH	HEIGHT
D1	9'00"	2'20"
D2	1'00"	2'20"
D3	9'00"	2'20"
D4	8'00"	2'20"
D5	9'00"	2'20"
D6	9'00"	2'20"
D7	9'00"	2'20"
D8	9'00"	2'20"
D9	9'00"	2'20"
D10	9'00"	2'20"
D11	9'00"	2'20"
D12	9'00"	2'20"
D13	9'00"	2'20"
D14	9'00"	2'20"
D15	9'00"	2'20"
D16	9'00"	2'20"
D17	9'00"	2'20"
D18	9'00"	2'20"
D19	9'00"	2'20"
D20	9'00"	2'20"
D21	9'00"	2'20"
D22	9'00"	2'20"
D23	9'00"	2'20"
D24	9'00"	2'20"
D25	9'00"	2'20"
D26	9'00"	2'20"
D27	9'00"	2'20"
D28	9'00"	2'20"
D29	9'00"	2'20"
D30	9'00"	2'20"
D31	9'00"	2'20"
D32	9'00"	2'20"
D33	9'00"	2'20"
D34	9'00"	2'20"
D35	9'00"	2'20"
D36	9'00"	2'20"
D37	9'00"	2'20"
D38	9'00"	2'20"
D39	9'00"	2'20"
D40	9'00"	2'20"
D41	9'00"	2'20"
D42	9'00"	2'20"
D43	9'00"	2'20"
D44	9'00"	2'20"
D45	9'00"	2'20"
D46	9'00"	2'20"
D47	9'00"	2'20"
D48	9'00"	2'20"
D49	9'00"	2'20"
D50	9'00"	2'20"
D51	9'00"	2'20"
D52	9'00"	2'20"
D53	9'00"	2'20"
D54	9'00"	2'20"
D55	9'00"	2'20"
D56	9'00"	2'20"
D57	9'00"	2'20"
D58	9'00"	2'20"
D59	9'00"	2'20"
D60	9'00"	2'20"
D61	9'00"	2'20"
D62	9'00"	2'20"
D63	9'00"	2'20"
D64	9'00"	2'20"
D65	9'00"	2'20"
D66	9'00"	2'20"
D67	9'00"	2'20"
D68	9'00"	2'20"
D69	9'00"	2'20"
D70	9'00"	2'20"
D71	9'00"	2'20"
D72	9'00"	2'20"
D73	9'00"	2'20"
D74	9'00"	2'20"
D75	9'00"	2'20"
D76	9'00"	2'20"
D77	9'00"	2'20"
D78	9'00"	2'20"
D79	9'00"	2'20"
D80	9'00"	2'20"
D81	9'00"	2'20"
D82	9'00"	2'20"
D83	9'00"	2'20"
D84	9'00"	2'20"
D85	9'00"	2'20"
D86	9'00"	2'20"
D87	9'00"	2'20"
D88	9'00"	2'20"
D89	9'00"	2'20"
D90	9'00"	2'20"
D91	9'00"	2'20"
D92	9'00"	2'20"
D93	9'00"	2'20"
D94	9'00"	2'20"
D95	9'00"	2'20"
D96	9'00"	2'20"
D97	9'00"	2'20"
D98	9'00"	2'20"
D99	9'00"	2'20"
D100	9'00"	2'20"

WINDOW SCHEDULE		
NO.	WIDTH	HEIGHT
S1	4'20"	2'20"
S2	4'20"	2'20"
S3	4'20"	1'45"
S4	3'00"	2'20"
S5	3'00"	1'45"
W1	1'50"	1'80"
W2	6'00"	1'45"
W3	6'00"	1'20"
W4	8'00"	1'20"
W5	1'20"	1'45"
DOOR SCHEDULE		
NO.	WIDTH	HEIGHT
D1	9'00"	2'20"
D2	1'00"	2'20"
D3	9'00"	2'20"
D4	8'00"	2'20"
D5	9'00"	2'20"
D6	9'00"	2'20"
D7	9'00"	2'20"
D8	9'00"	2'20"
D9	9'00"	2'20"
D10	9'00"	2'20"
D11	9'00"	2'20"
D12	9'00"	2'20"
D13	9'00"	2'20"
D14	9'00"	2'20"
D15	9'00"	2'20"
D16	9'00"	2'20"
D17	9'00"	2'20"
D18	9'00"	2'20"
D19	9'00"	2'20"
D20	9'00"	2'20"
D21	9'00"	2'20"
D22	9'00"	2'20"
D23	9'00"	2'20"
D24	9'00"	2'20"
D25	9'00"	2'20"
D26	9'00"	2'20"
D27	9'00"	2'20"
D28	9'00"	2'20"
D29	9'00"	2'20"
D30	9'00"	2'20"
D31	9'00"	2'20"
D32	9'00"	2'20"
D33	9'00"	2'20"
D34	9'00"	2'20"
D35	9'00"	2'20"
D36	9'00"	2'20"
D37	9'00"	2'20"
D38	9'00"	2'20"
D39	9'00"	2'20"
D40	9'00"	2'20"
D41	9'00"	2'20"
D42	9'00"	2'20"
D43	9'00"	2'20"
D44	9'00"	2'20"
D45	9'00"	2'20"
D46	9'00"	2'20"
D47	9'00"	2'20"
D48	9'00"	2'20"
D49	9'00"	2'20"
D50	9'00"	2'20"
D51	9'00"	2'20"
D52	9'00"	2'20"
D53	9'00"	2'20"
D54	9'00"	2'20"
D55	9'00"	2'20"
D56	9'00"	2'20"
D57	9'00"	2'20"
D58	9'00"	2'20"
D59	9'00"	2'20"
D60	9'00"	2'20"
D61	9'00"	2'20"
D62	9'00"	2'20"
D63	9'00"	2'20"
D64	9'00"	2'20"
D65	9'00"	2'20"
D66	9'00"	2'20"
D67	9'00"	2'20"
D68	9'00"	2'20"
D69	9'00"	2'20"
D70	9'00"	2'20"
D71	9'00"	2'20"
D72	9'00"	2'20"
D73	9'00"	2'20"
D74	9'00"	2'20"
D75	9'00"	2'20"
D76	9'00"	2'20"
D77	9'00"	2'20"
D78	9'00"	2'20"
D79	9'00"	2'20"
D80	9'00"	2'20"
D81	9'00"	2'20"
D82	9'00"	2'20"
D83	9'00"	2'20"
D84	9'00"	2'20"
D85	9'00"	2'20"
D86	9'00"	2'20"
D87	9'00"	2'20"
D88	9'00"	2'20"
D89	9'00"	2'20"
D90	9'00"	2'20"
D91	9'00"	2'20"
D92	9'00"	2'20"
D93	9'00"	2'20"
D94	9'00"	2'20"
D95	9'00"	2'20"
D96	9'00"	2'20"
D97	9'00"	2'20"
D98	9'00"	2'20"
D99	9'00"	2'20"
D100	9'00"	2'20"



## ROOF PLAN

## AREA CALCULATIONS FOR FIRST FLOOR



## AREA CALCULATIONS FOR GROUND FLOOR

- |   |                 |  |                                   |                                      |                                |  |   |  |  |  |  |
|---|-----------------|--|-----------------------------------|--------------------------------------|--------------------------------|--|---|--|--|--|--|
| AREAS OF FIG. A = 289.12 M <sup>2</sup> | DUCT VOID = NIL | PROPOSED B.U. AREA = 289.12 M <sup>2</sup> | AREA EXCLUDED FROM COVERAGE = NIL | COVERED AREA = 289.12 M <sup>2</sup> | DUCT AREAS FOR FAR CALCULATION | DUCT AREA: a = 2.150 x 1.50 = 12.45 M <sup>2</sup> | DUCT AREA: b = 4.80 x 1.75 = 12.30 M <sup>2</sup> | DUCT AREA: c = 2.150 x 4.98 = 14.88 M <sup>2</sup> | DUCT AREA: d = 10.29 x 1.50 = 15.44 M <sup>2</sup> | DUCT AREA: e = 1.50 x 8.18 = 9.27 M <sup>2</sup> | TOTAL DEDUCTION = 64.33 M <sup>2</sup> |
|---|-----------------|--|-----------------------------------|--------------------------------------|--------------------------------|--|---|--|--|--|--|

**NET FLOOR AREA ON GROUND FLOOR**  
= 280.12 - 64.33 = 224.73 M<sup>2</sup>

## SOUL ELEVATION

**APPLICANT'S SIGN:-**

## SANCTION DRAWING

PROPOSED GROUP HOUSING ON LAND BEARING  
SURVEY NO. 216/53 AT VILLAGE ASSAGAO,  
TALUKA BARDEZ - GOA

TRANSACTION DRAWING  
PROPOSED GR  
SURVEY NO. 21  
TALUKA BARDI  
HOUSE NO.2

ARCHITECT'S SIGN:-

**ARMÍNIO RIBEIRO DE SANTANA**  
ARCHITECT  
H. No.: 161, Opp. St. Sebastian Chapel, Fontainhas,  
Panaji-Goa. Ph.: (0) 2225637 (R) 2424042  
Reg. No. AR/0016/2010

## SUBMISSION DRAWING

DRG.NO  
02

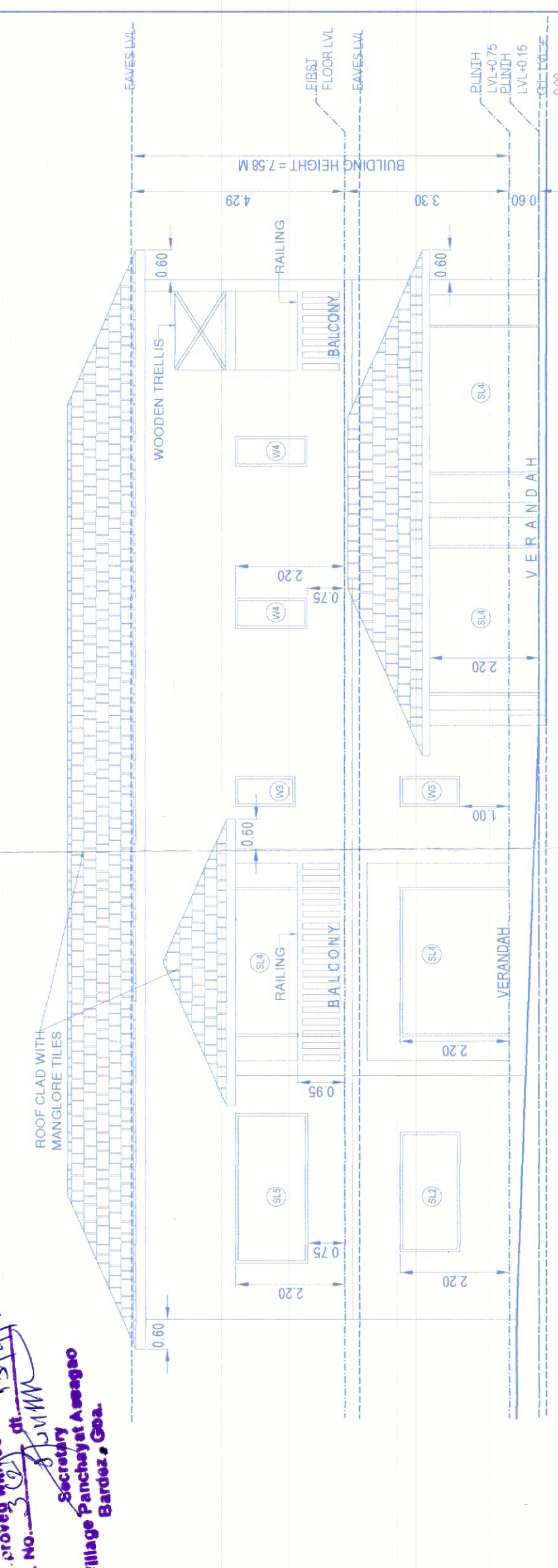
SCALE - 1:100, 200, 500  
AND DIMENSIONS  
ARE ALL IN METRES,  
UNLESS  
SPECIFIED OTHERWISE.  
PLANS, ELEVATION, SECTION  
AREA LINE DIAGRAM

DRAWN BY: **PREM**  
DATE: 11.05.2022

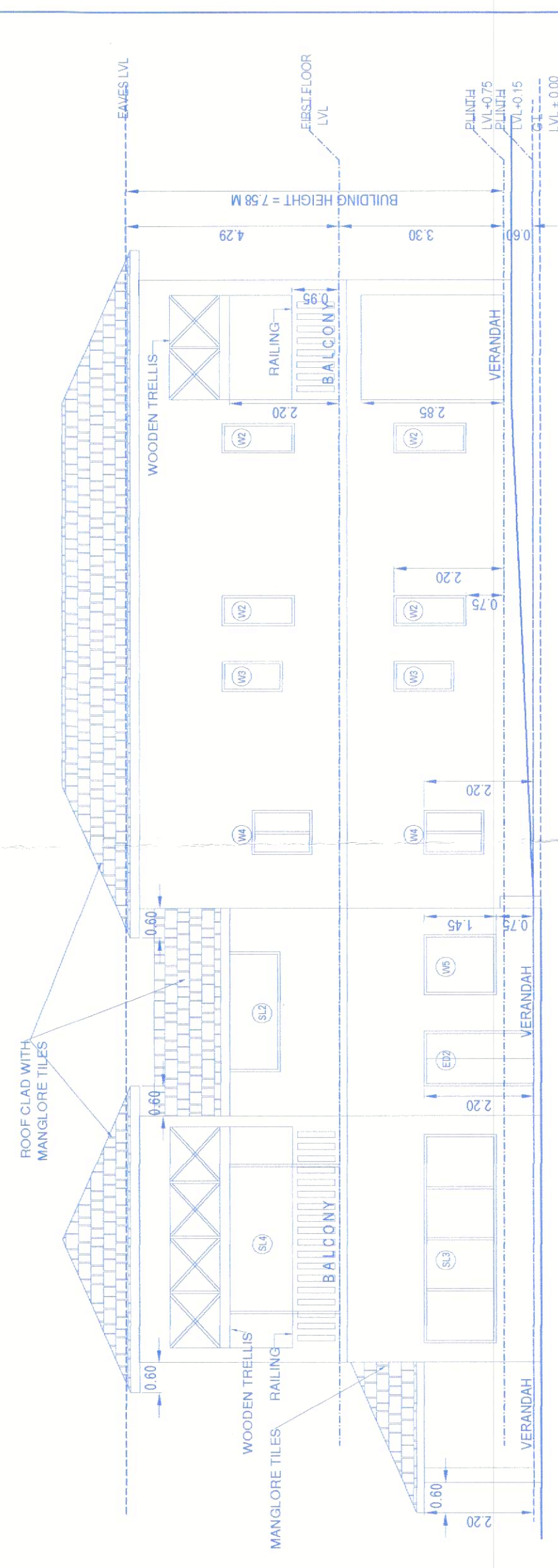




Approved with conditions  
P. No. 11/14/2022  
Secretary  
Village Panchayat Assagao  
Bardez, Goa.



SOUTH ELEVATION

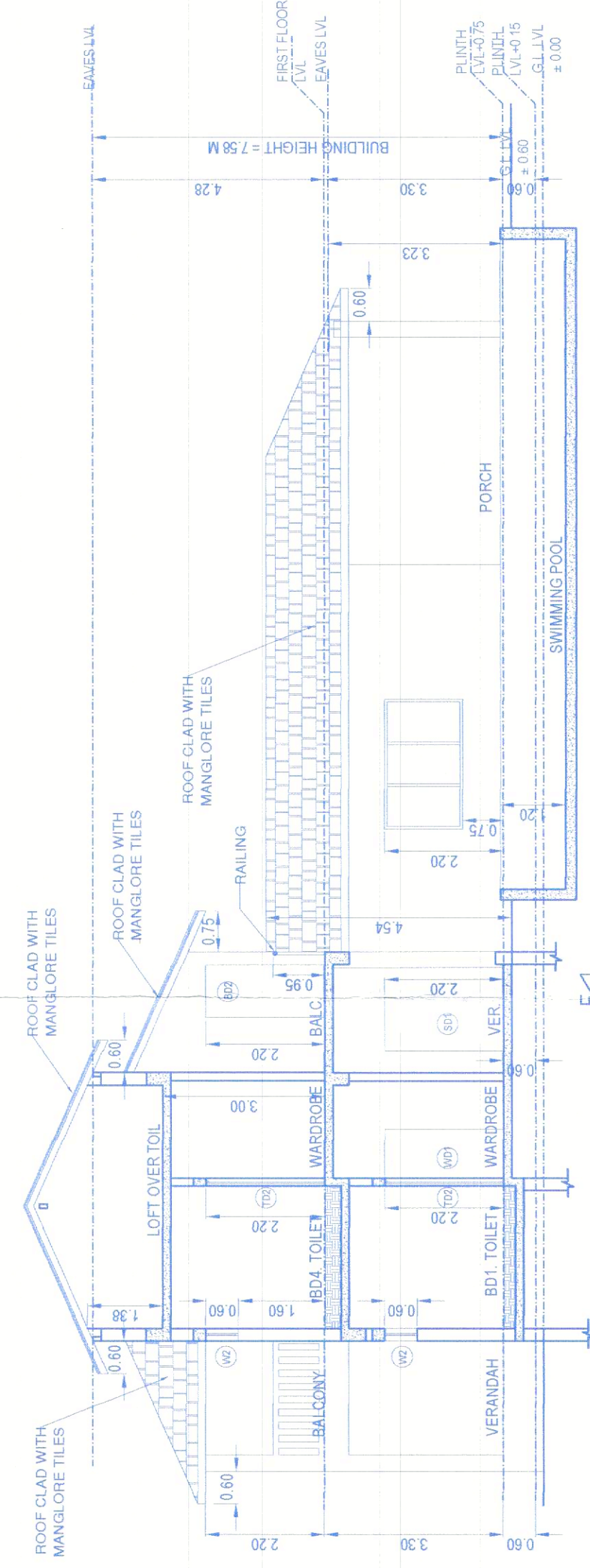


WEST ELEVATION

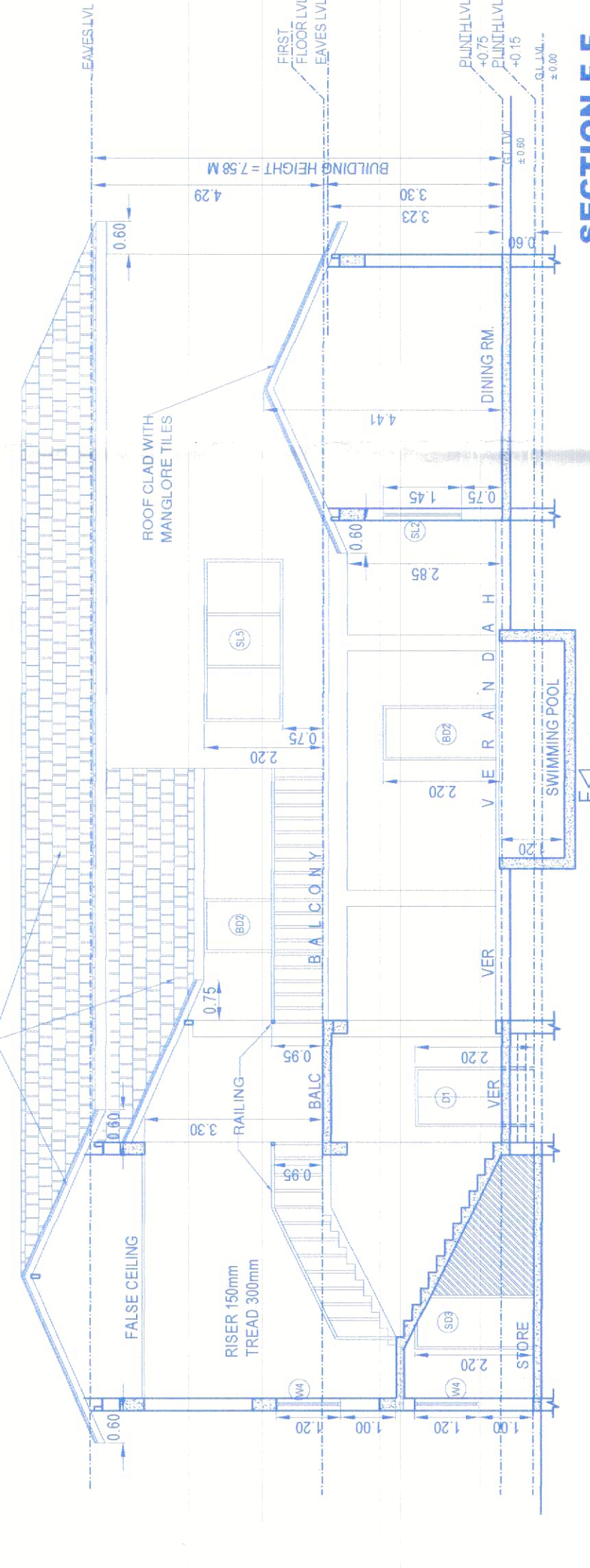
WINDOW SCHEDULE		
NO.	WIDTH	HEIGHT
SL1	4200	2200
SL2	2400	1450
SL3	4200	1450
SL4	3000	2200
SL5	3000	1450
W1	1500	1800
W2	600	1450
W3	600	1200
W4	900	1200
W5	1200	1450

DOOR SCHEDULE		
NO.	WIDTH	HEIGHT
ED1	900	2200
ED2	1000	2200
ED3	900	2200
TD1	800	2200
TD2	900	2200
TD3	750	2200
WD1	900	2200
KD1	1000	2200
KD2	1000	2200
KD3	900	2200
BD1	950	2200
BD2	1000	2200
SD1	1000	2200
S02	900	1950
S03	1000	2200
D1	1000	2200
D2	1000	2200

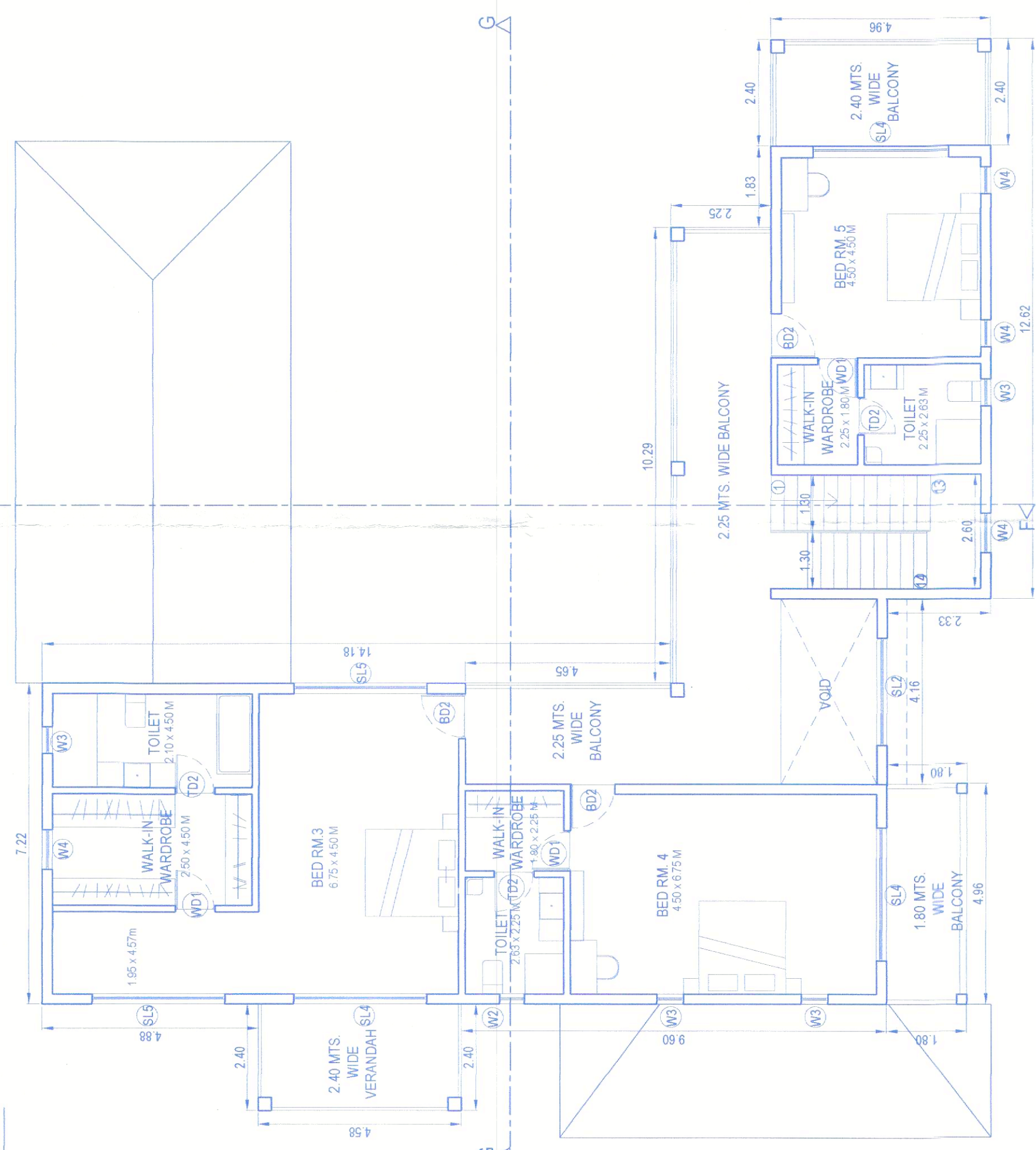
SECTION G-G



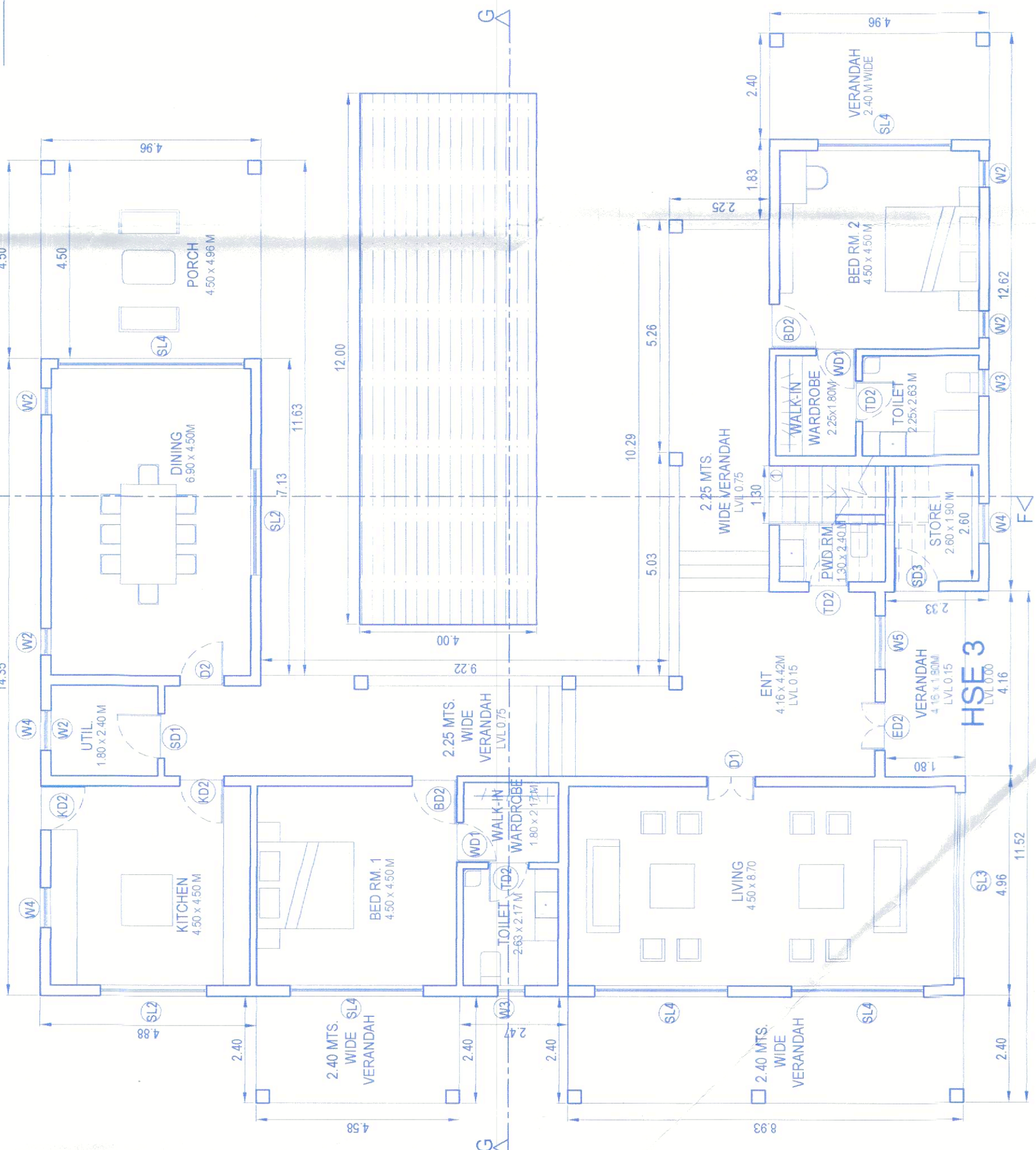
SECTION F-F



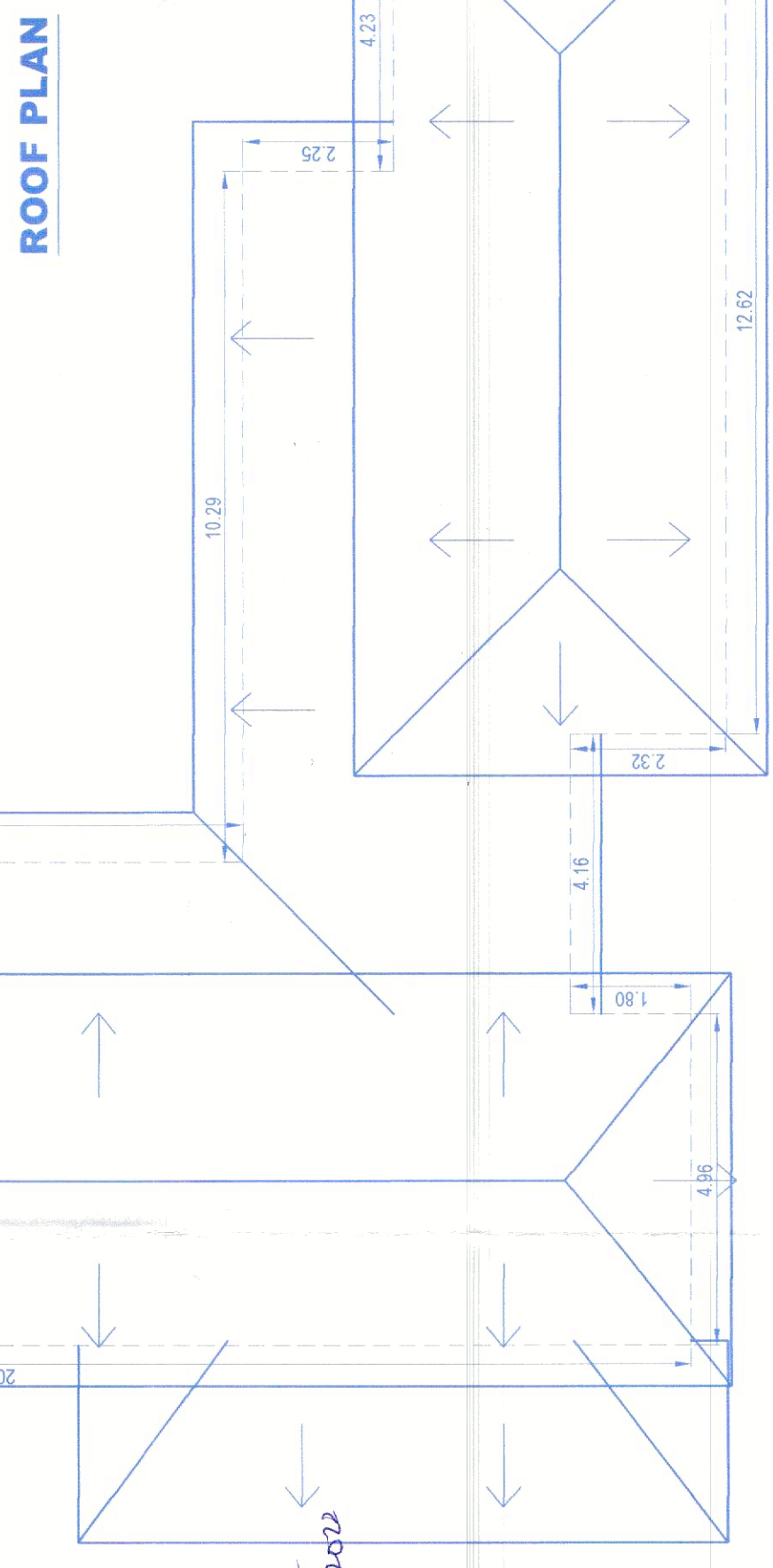
SECTION G-G



FIRST FLOOR PLAN



GROUND FLOOR PLAN



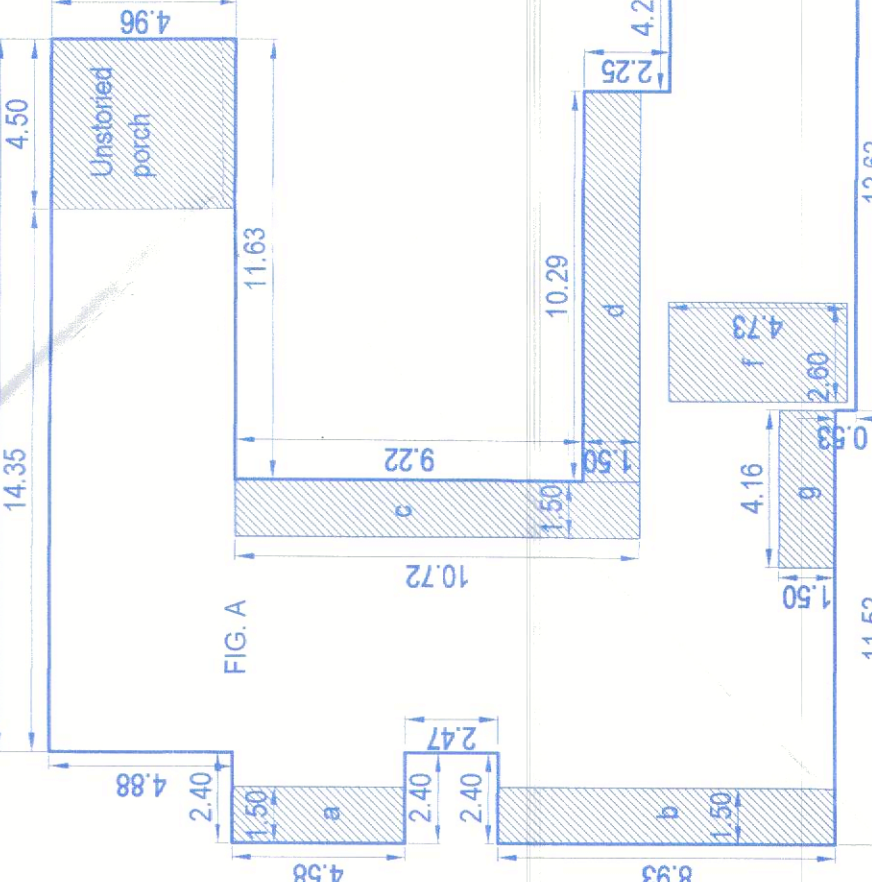
ROOF PLAN

AREA CALCULATIONS FOR FIRST FLOOR

1. AREAS OF FIG. B = 248.45 M<sup>2</sup>
2. DEDUCT VOIDS = 9.01 M<sup>2</sup>
3. BUILT-UP AREA = 240.44 M<sup>2</sup>
4. DEDUCT AREAS FOR FAR CALCULATIONS  
RECT. AREA : a = 1.50 x 4.58 = 6.87 M<sup>2</sup>  
RECT. AREA : b = 1.50 x 6.15 = 9.23 M<sup>2</sup>  
RECT. AREA : c = 10.29 x 1.50 = 15.44 M<sup>2</sup>  
RECT. AREA : d = 2 x 1.50 x 4.96 = 14.88 M<sup>2</sup>  
RECT. AREA : e = 2.60 x 4.73 = 12.30 M<sup>2</sup>  
TOTAL DEDUCTION = 58.71 M<sup>2</sup>
5. NET FLOOR AREA ON FIRST FLOOR  
= 240.44 - 58.11 = 181.74 M<sup>2</sup>

AREA CALCULATIONS FOR GROUND FLOOR

1. AREAS OF FIG. A = 334.85 M<sup>2</sup>
2. DEDUCT VOID = NIL
3. PROPOSED B.U. AREA = 334.85 M<sup>2</sup>
4. AREA EXCLUDED FROM COVERAGE  
UNSTORIED PORCH = 4.50 x 4.96 = 22.32 M<sup>2</sup>
5. COVERED AREA = 312.53 M<sup>2</sup>
6. DEDUCT AREAS FOR FAR CALCULATIONS  
RECT. AREA : a = 1.50 x 4.58 = 6.87 M<sup>2</sup>  
RECT. AREA : b = 1.50 x 6.15 = 9.23 M<sup>2</sup>  
RECT. AREA : c = 10.29 x 1.50 = 15.44 M<sup>2</sup>  
RECT. AREA : d = 1.50 x 4.96 = 7.44 M<sup>2</sup>  
RECT. AREA : e = 2.60 x 4.73 = 12.30 M<sup>2</sup>  
RECT. AREA : f = 4.16 x 1.50 = 6.24 M<sup>2</sup>  
RECT. AREA : g = 4.50 x 4.96 = 22.32 M<sup>2</sup>  
UNSTORIED Porch = 4.50 x 4.96 = 22.32 M<sup>2</sup>  
TOTAL DEDUCTION = 100.08 M<sup>2</sup>
7. NET FLOOR AREA ON GROUND FLOOR  
= 334.85 - 100.08 = 234.77 M<sup>2</sup>



ARCHITECT'S SIGN:  
ARMINDO BIBEIRO DE SANTANA  
ARCHITECT  
H. Jee-181 Opp. St. Sebastian Church, Estrelas,  
Panaji, Goa-401 302  
Reg. No. AR00162010

APPLICANT'S SIGN:  
FOR COSME COSTA & ASSOCIATES  
PARTNER

SANCTION DRAWING  
**PROPOSED GROUP  
HOUSING ON LAND  
BEARING SURVEY NO.  
216/53 AT VILLAGE  
ASSAGAO, TALUKA  
BARDEZ - GOA**  
**HOUSE NO.3**

SCALE: 1:100 (300/500  
AND DIMENSIONS  
ARE ALL IN METRES  
UNLESS  
SPECIFIED OTHERWISE  
PLANS ELEVATION SECTION  
ARE LINE DIAGRAM  
DRAWN BY: PRISM,  
DATE: 11.05.2022

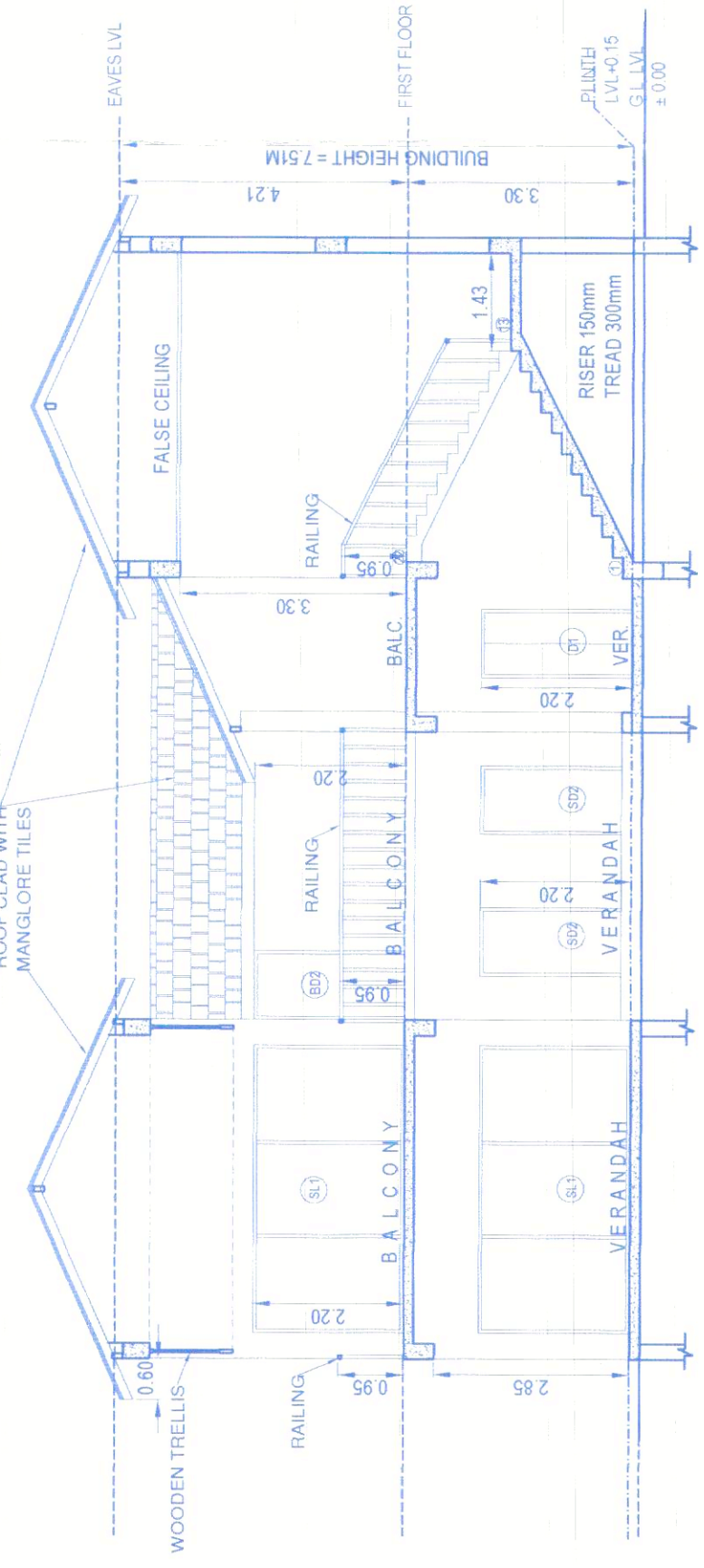
**SUBMISSION  
DRAWING**

**DRG. NO**  
**03**

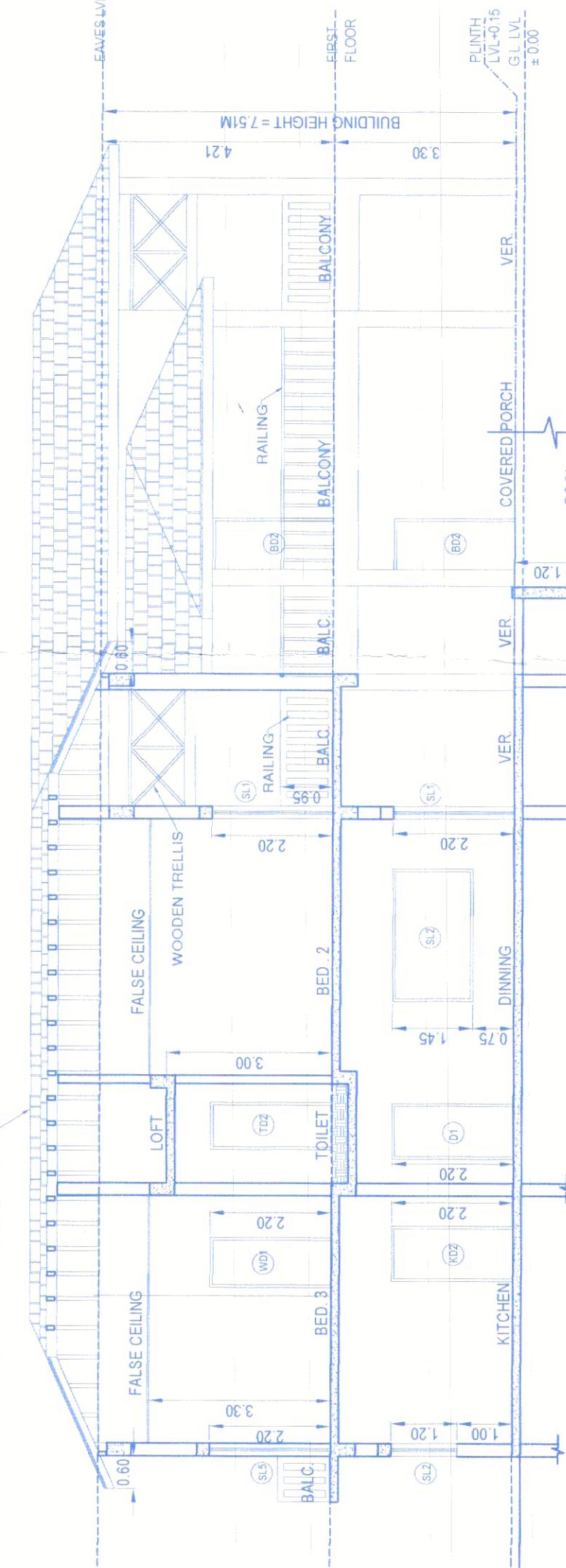




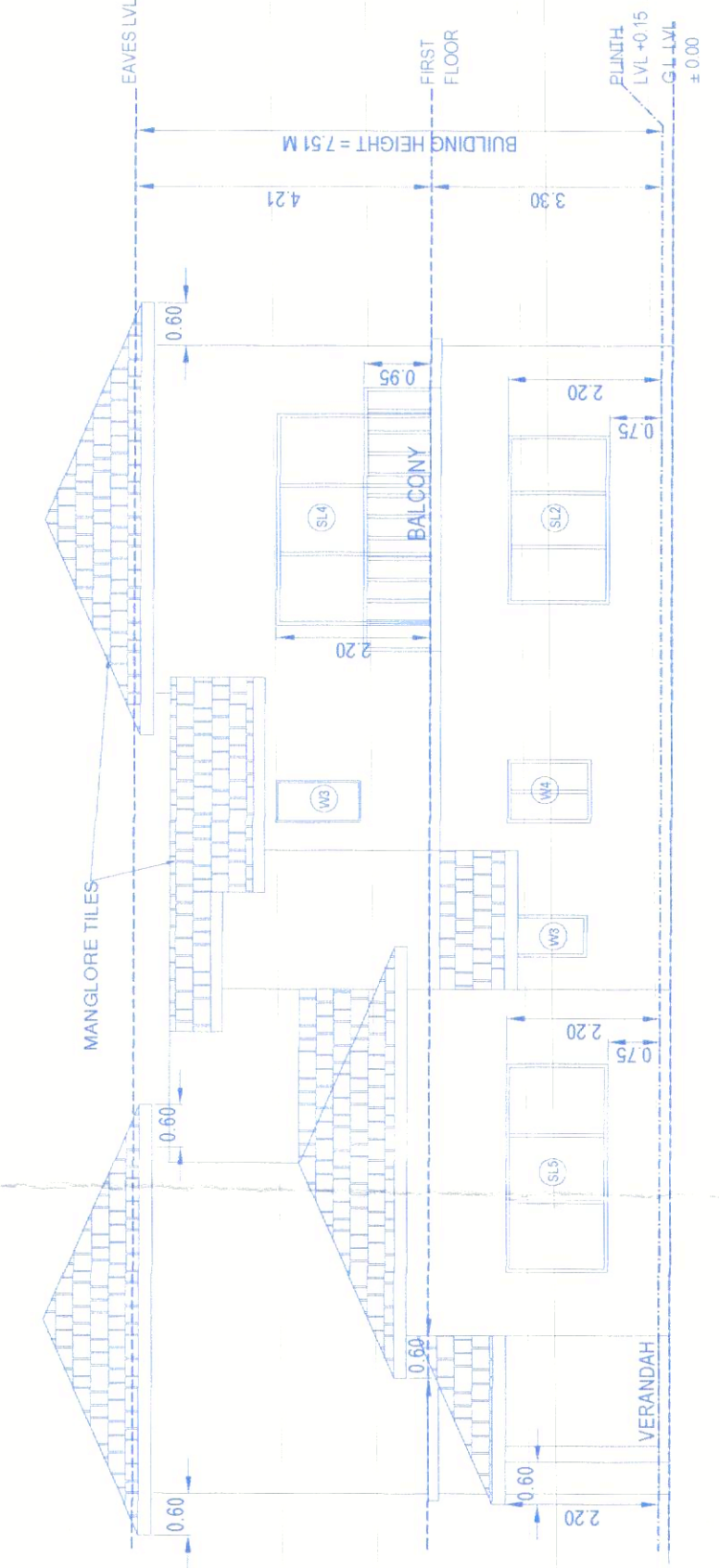
Approved with Conditions  
R. No. 100/2022  
at 10/10/2022  
Village Panchayat Assagao  
Bardez - Goa.



SECTION J-J

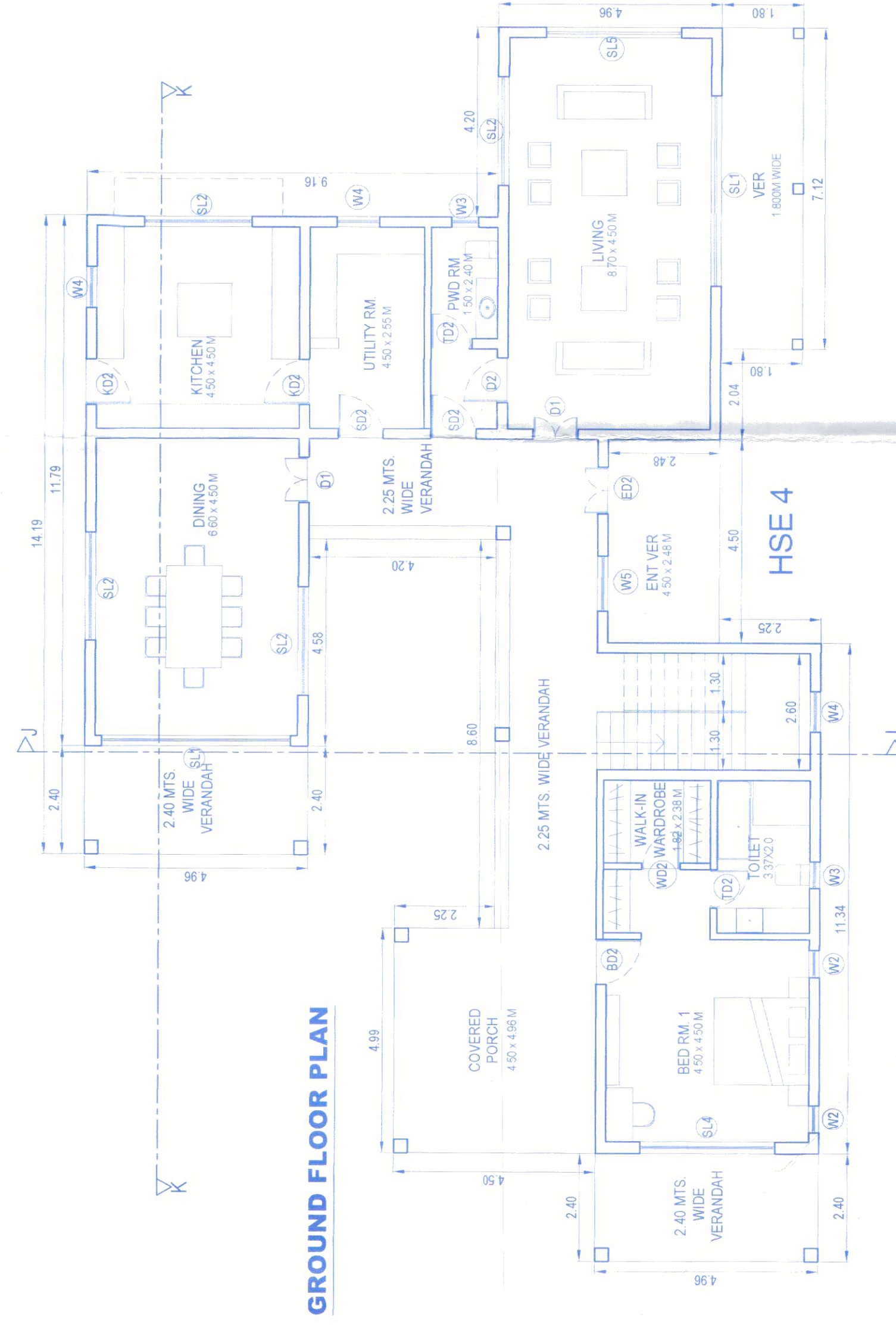


SECTION K-K

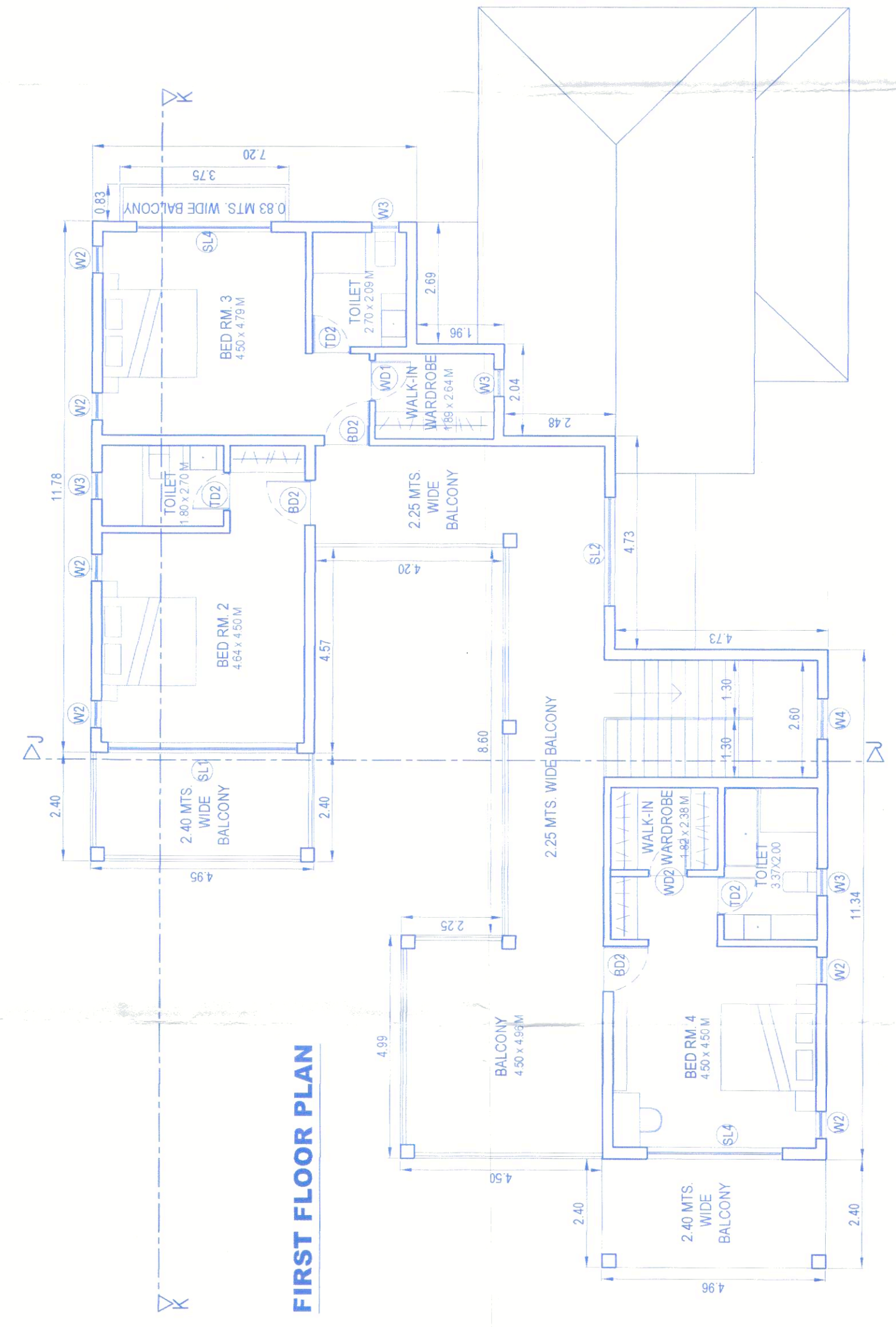


SECTION L-L

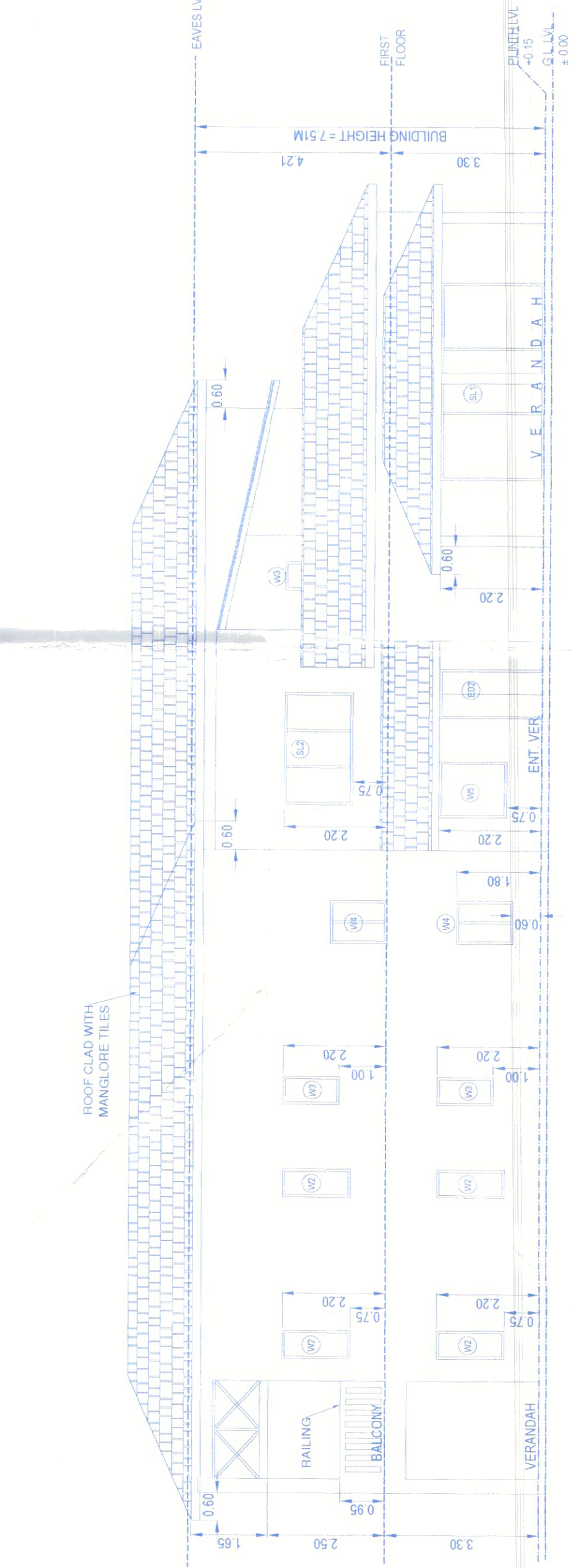
WINDOW SCHEDULE			DOOR SCHEDULE		
NO.	WIDTH	HEIGHT	NO.	WIDTH	HEIGHT
SL1	4200	2200	ED1	900	2200
SL2	2400	1450	ED2	1000	2200
SL3	4200	1450	ED3	900	2200
SL4	3000	2200	TD1	800	2200
SL5	3000	1450	TD2	900	2200
W1	1500	1800	TD3	750	2200
W2	600	1450	WD1	900	2200
W3	600	1200	KD1	1000	2200
W4	900	1200	KD2	1000	2200
W5	1200	1450	KD3	900	2200
			BD1	950	2200
			BD2	1000	2200
			SD1	1000	2200
			SD2	900	1950
			SD3	1000	2200
			D1	1000	2200
			D2	1000	2200



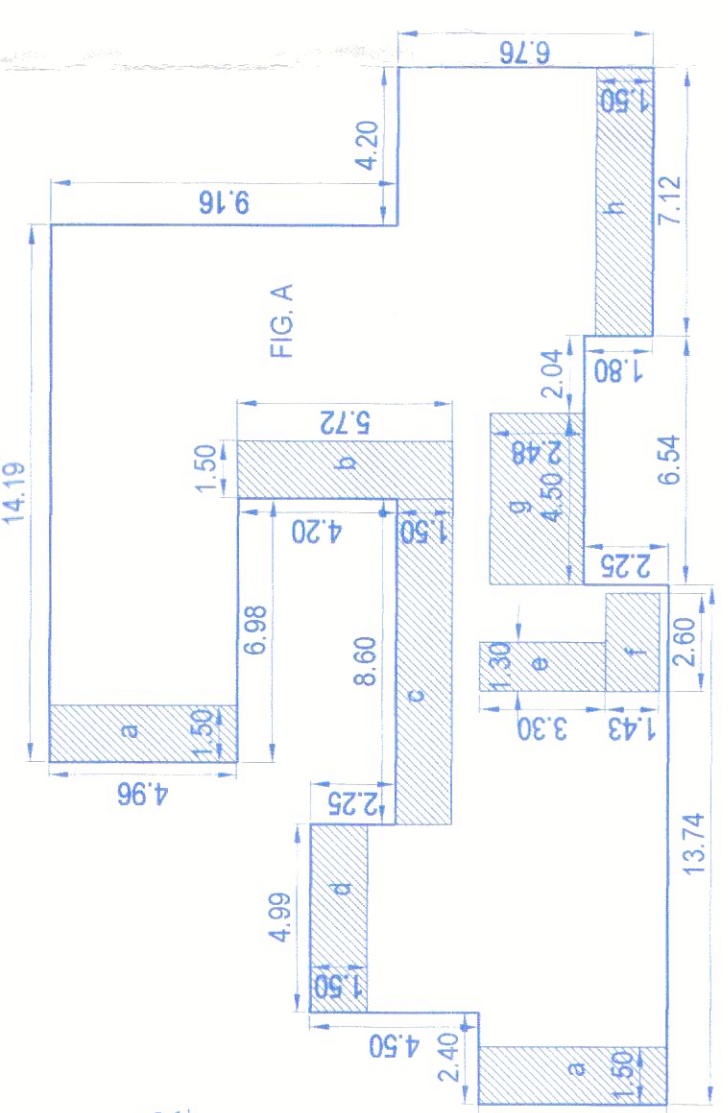
GROUND FLOOR PLAN



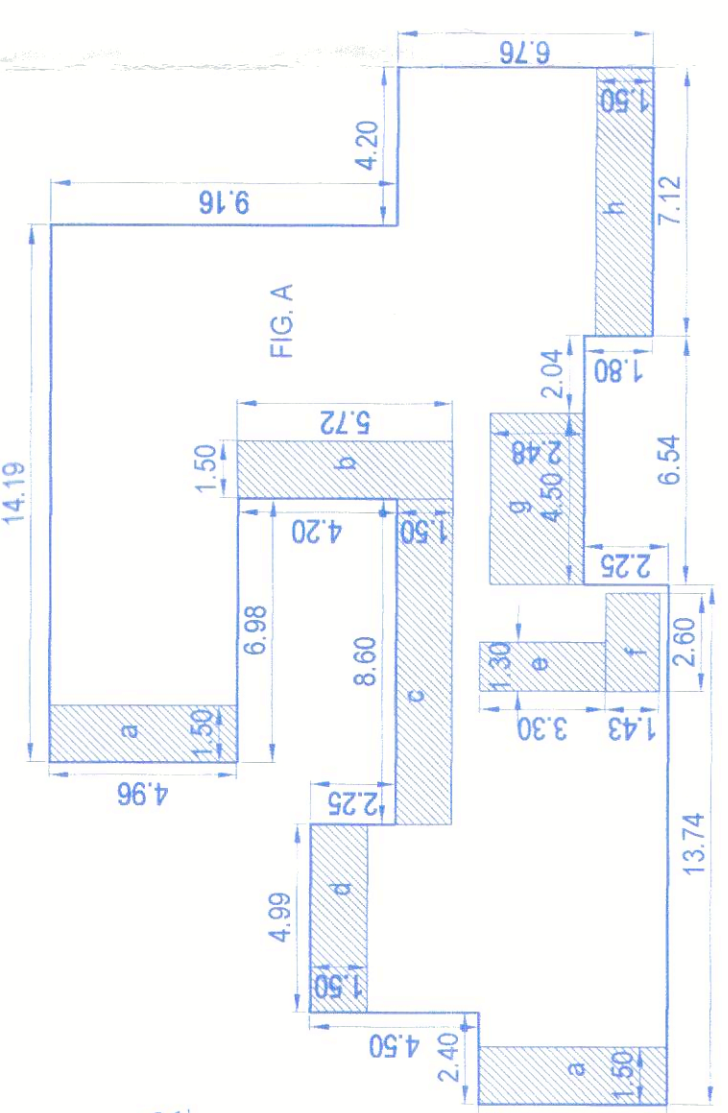
FIRST FLOOR PLAN



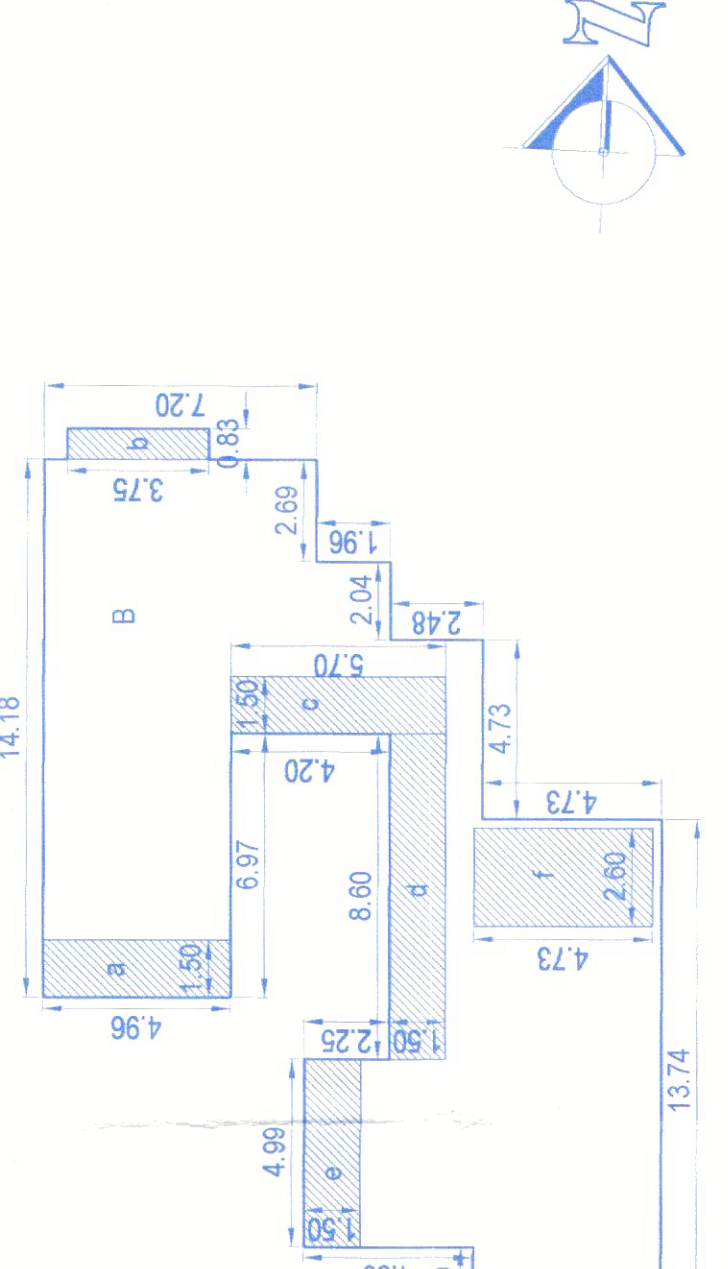
WEST ELEVATION



AREA CALCULATIONS FOR GROUND FLOOR



AREA CALCULATIONS FOR FIRST FLOOR



ROOF PLAN

SANCTION DRAWING

PROPOSED GROUP HOUSING ON LAND BEARING  
SURVEY NO. 216/53 AT VILLAGE ASSAGAO,  
TALUKA BARDEZ - GOA  
HOUSE NO.4

APPLICANT'S SIGN:-

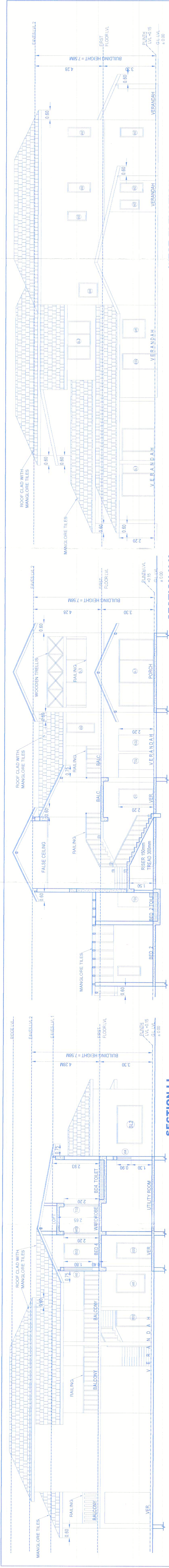
Mr. COSME COSTA & ASSOCIATES  
ARCHITECT  
Rajiv Patel

ARCHITECT'S SIGN:-

ARMINDO RIBEIRO DE SANTANA  
ARCHITECT  
H.No. 161, Cps. St. Sebastian Chapel, Fátima,  
Panaji-Goa. Ph. 02-223837, 02-224042  
Reg. No. AP003 05010

SUBMISSION  
DRAWING  
DRG. NO  
04  
SCALE: 1:100, 200, 500  
AND DIMENSIONS  
ARE ALL IN METRES.  
UNLESS  
SPECIFIED OTHERWISE.  
PLANS ELEVATION, SECTION  
AREA LINE DIAGRAM  
DRAWN BY: 90134  
DATE: 11.05.2022



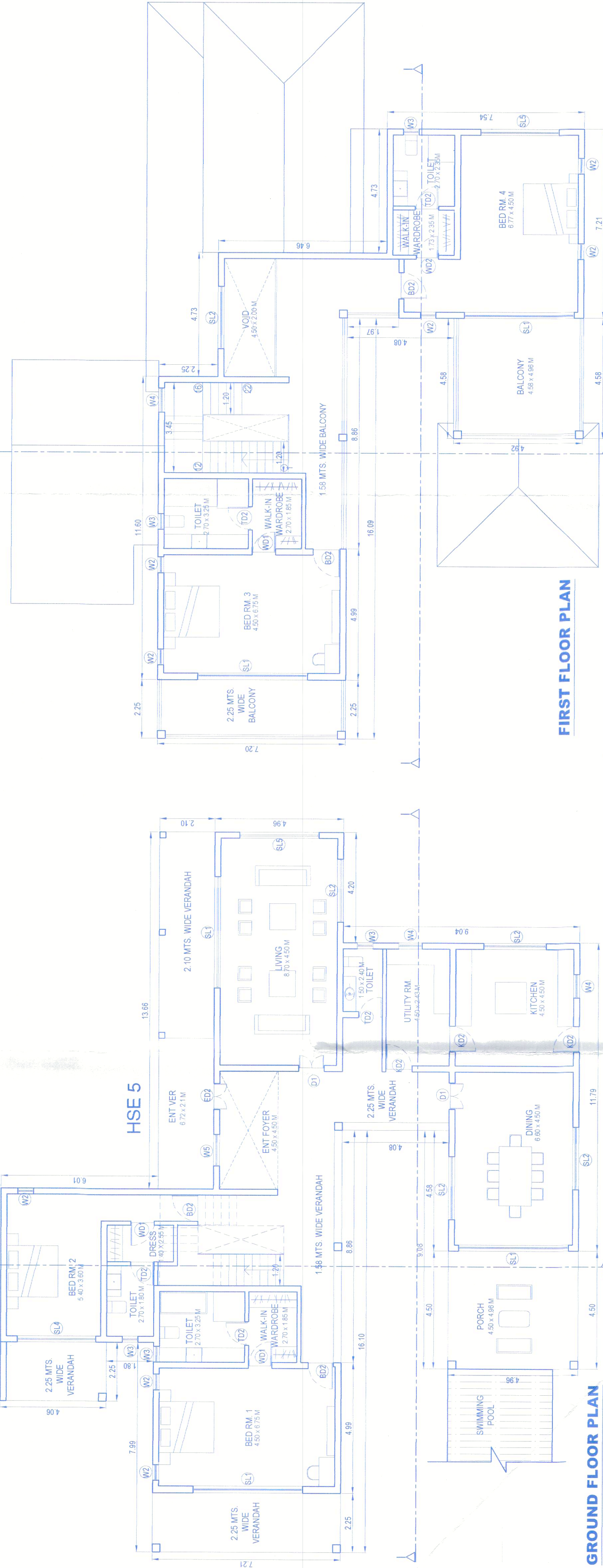


WEST ELEVATION

SECTION H-H

SECTION H-I

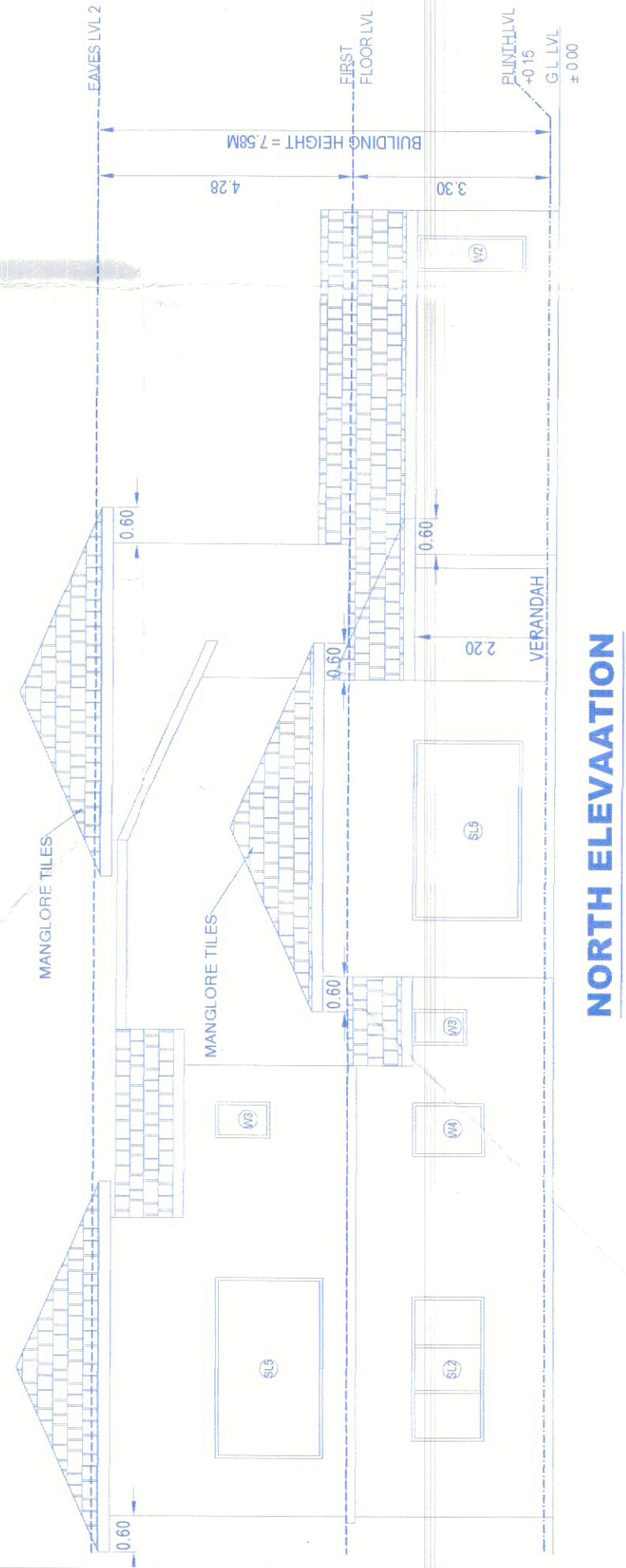
Approved with condition vide  
L. No.: 377/D/191/ASG/02/2021/442  
dt. 11/03/22  
Approved with condition vide  
R. No.: 3122/2021 dt. 13/03/22  
Dy. Town Planning Deptt  
Govt. of Goa, Margao  
Village Panchayat Assagao  
Bardez - Goa.



FIRST FLOOR PLAN

GROUND FLOOR PLAN

ROOF PLAN



NORTH ELEVATION

AREA CALCULATIONS FOR GROUND FLOOR

1. AREAS OF FIG. A = 348.88 M<sup>2</sup>

2. DEDUCT VOID = NIL

3. PROPOSED B.U. AREA = 348.88 M<sup>2</sup>

4. AREA EXCLUDED FROM COVERAGE

UNSTORED PORCH = 4.50 x 4.96 = 22.32 M<sup>2</sup>

5. PROPOSED COVERED AREA = 327.57 M<sup>2</sup>

6. DEDUCT AREAS FOR FAR CALCULATIONS

RECT. AREA. a = 1.50 x 4.06 = 6.09 M<sup>2</sup>

RECT. AREA. b = 1.50 x 7.21 = 10.82 M<sup>2</sup>

RECT. AREA. c = 1.50 x 1.50 = 2.25 M<sup>2</sup>

RECT. AREA. d = 8.88 x 1.50 = 13.32 M<sup>2</sup>

RECT. AREA. e = 8.88 x 1.50 = 13.32 M<sup>2</sup>

RECT. AREA. f = 1.50 x 5.96 = 8.94 M<sup>2</sup>

UNSTORED PORCH = 4.50 x 4.96 = 22.32 M<sup>2</sup>

TOTAL DEDUCTION = 86.25 M<sup>2</sup>

7. NET FLOOR AREA ON GROUND FLOOR

= 348.88 - 86.25 = 262.63 M<sup>2</sup>

AREA CALCULATIONS FOR FIRST FLOOR

1. AREAS OF FIG. B = 202.80 M<sup>2</sup>

2. DEDUCT VOIDS = 10.01 M<sup>2</sup>

3. BUILT-UP AREA = 192.79 M<sup>2</sup>

4. DEDUCT AREAS FOR FAR CALCULATIONS

RECT. AREA. a = 1.50 x 7.21 = 10.82 M<sup>2</sup>

RECT. AREA. b = 3.45 x 4.00 = 13.80 M<sup>2</sup>

RECT. AREA. c = 1.50 x 1.50 = 2.25 M<sup>2</sup>

RECT. AREA. d = 1.50 x 4.96 = 7.44 M<sup>2</sup>

RECT. AREA. e = 1.50 x 4.96 = 7.44 M<sup>2</sup>

TOTAL DEDUCTION = 55.32 M<sup>2</sup>

5. NET FLOOR AREA ON FIRST FLOOR

= 192.79 - 55.32 = 137.47 M<sup>2</sup>

WINDOW SCHEDULE		DOOR SCHEDULE	
NO.	WIDTH	NO.	WIDTH
SL1	4200	ED1	900
SL2	2400	ED2	1000
SL3	4200	ED3	900
SL4	3000	TD1	800
SL5	3000	TD2	900
W1	1500	TD3	750
W2	600	WD1	900
W3	600	KD1	1000
W4	900	KD2	1000
W5	1200	KD3	900

APPLICANT'S SIGN:  
For COSME COSTA & ASSOCIATES  
ARCHITECT  
Rajendra Ph. 08 2283857 (R) 242492  
Reg. No. AR00162010

ARCHITECT'S SIGN:  
ARUNDO FIBERO DE SANTANA  
ARCHITECT  
Rajendra Ph. 08 2283857 (R) 242492  
Reg. No. AR00162010

SANCTION DRAWING  
PROPOSED GROUP HOUSING ON LAND BEARING  
SURVEY NO. 216/53 AT VILLAGE ASSAGAO,  
TALUKA BARDEZ - GOA  
HOUSE NO.5

SUBMISSION  
DRAWING  
DRG. NO  
05

SCALE: 1:100/200/500  
AND DIMENSIONS  
ARE ALL IN METRES  
UNLESS  
SPECIFIED OTHERWISE  
PLANS/ELEVATION SECTION,  
AREA LINE DIAGRAM  
DRAWN BY: PBM  
DATE: 11.05.2022