

---



ANANTARA  
ELYSIAN

MIRAMAR  
GOA

---



# A SPARK OF INFINITY.



Meaning “timeless” in Sanskrit, Anantara incorporates a spark of the Infinite into the world of real estate, bringing a new vision of luxury to the modern living experience. Our understanding of the true value of eternity in a changing world is reflected in the core values of the brand, with services that focus efforts exclusively on the client’s property with passion, quality, and integrity.

Anantara offers discerning connoisseurs of opulence the opportunity to experience a slice of infinity, with a living space that exudes sophistication and everlasting potential.



# A COASTAL PARADISE.



Goa is India's exotic coastal paradise, a haven for those who wish to experience nature's eternal grandeur, with palm-fringed beaches and unique culture stemming from the state's colonial Portuguese heritage. A live-work-play destination where time stands still, this beachside Utopia is the perfect location for the discerning client in search of a transcendental experience that encompasses extravagance, comfort, and a deep connect with the natural world.

The picturesque shoreline of Miramar beach in Panaji presents, in addition to breathtaking views of the Arabian sea, a premium geographical advantage - with proximity to the city and some of the finest schools, clubs, hotels and resorts in Goa - making it the idyllic location for Elysian by Anantara, the first of its kind luxury high-rise apartment complex in Goa.



# THE EPITOME OF LUXURY.



Elysian by Anantara at Miramar, near Panaji city, is the epitome of splendid modern living – the first and tallest high-rise luxury apartments in Goa, with 14 stories – with contemporary and elegant design, plush fittings and spaces that focus on comfort and style. Elysian provides connoisseurs of sophistication a timeless, one of a kind living experience.

**DP Architects** is one of the world's leading design practices, committed to shaping a sustainable public domain.

The firm has been instrumental in shaping Singapore's remarkable cityscape through the design of notable landmarks, including the People's Park Complex, the Esplanade Theatres and Singapore Sports Hub. The firm has designed projects of diverse scales, from small pavilions to mega projects such as **The Dubai Mall and Resorts World Sentosa**.



Actual render of lobby drop off

Elysian by Anantara invites you to experience the convenience of lavish amenities that blend seamlessly with elegant modern living by the sea - complete with a plush lobby along with valet and concierge services.



The towering magnificence of Elysian allows for the perfect place to spend your evenings watching the setting sun.

Actual render of balcony deck



# TYPICAL FLOOR PLAN

(WITH / WITHOUT REFUGEE AREA)



**3 1/2** BEDROOM APARTMENT

Flat No. 101, 201, 301, 401, 501, 601, 701

Saleable Area: 285.11 Sq.M.



3

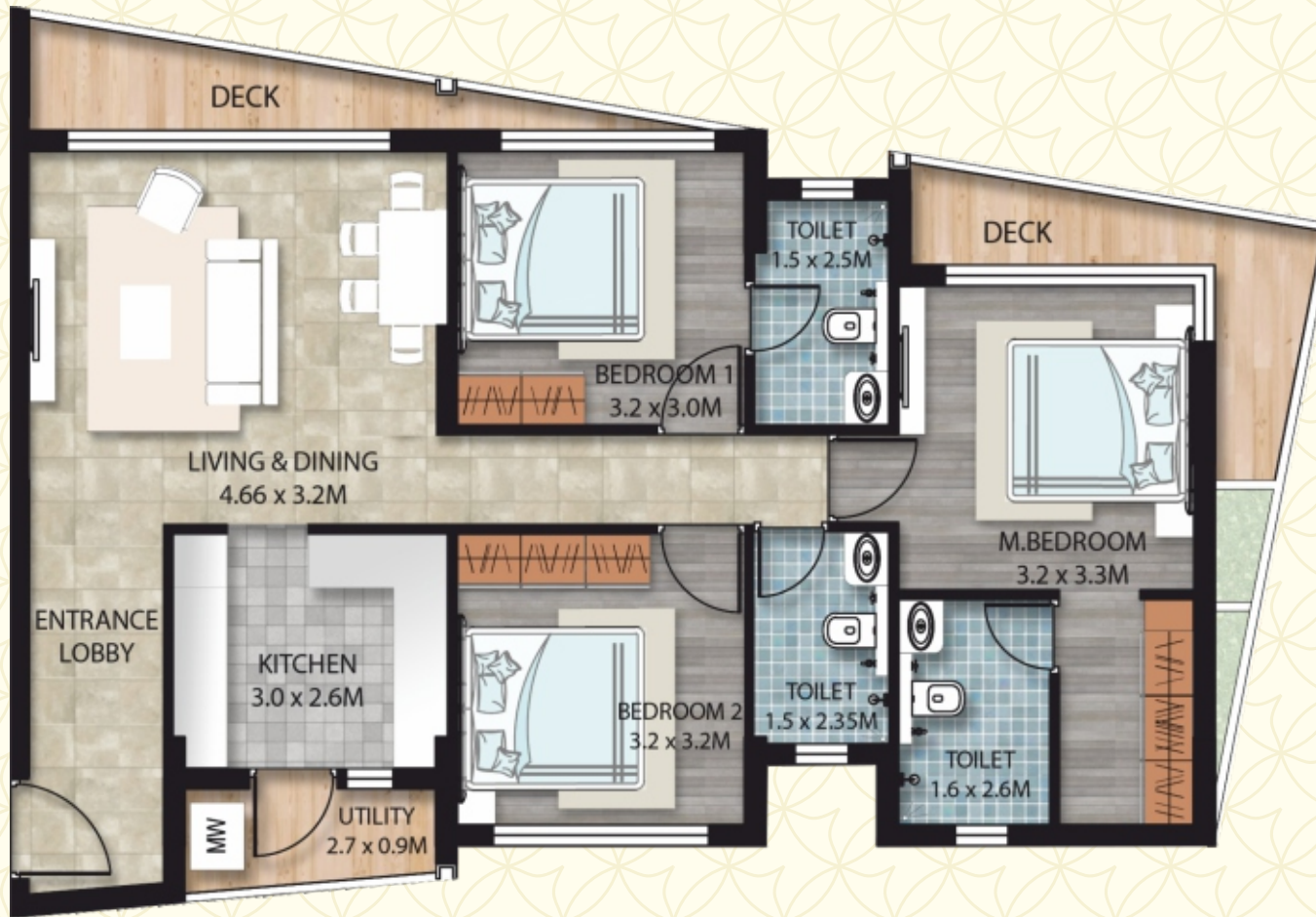


3



# TYPICAL FLOOR PLAN

(WITH / WITHOUT REFUGEE AREA)



## 3 BEDROOM APARTMENT

Flat No. 102, 202, 302, 402, 502, 602, 702, 802

Saleable Area: 159.71 Sq.M.





Actual render of living room

Spacious and sophisticated interiors with Italian marble flooring, exclusive modular kitchens and stunningly exotic bathrooms with fittings that exude class. Elysian's apartments are a seamless blend of elegance and contemporary design.

An elevated experience of relaxation with majestic views and bedrooms furnished with rich, solid wood flooring.

Actual render of bedroom



# SKY VILLA FLOOR PLAN



5

BEDROOM SKY VILLA (LEVEL 1)

Flat No. 801

Saleable Area: 570.22 Sq.M.



# SKY VILLA FLOOR PLAN



5

BEDROOM SKY VILLA (LEVEL 2)

Flat No. 801

Saleable Area: 570.22 Sq.M.





Actual renders of the infinity pool

### INFINITY POOL OVERLOOKING SEA

Elysian treats residents to sensual indulgence that aims to strike a balance with nature and the rush of modern life, with a splendid outdoor rooftop infinity pool with a deck that exhibits spectacular views of the Arabian Sea and the picturesque shorelines of the beach – offering the perfect getaway from the hustle and bustle of city life right in one's own living space.



## ROOFTOP GARDEN AND BAR

Exemplifying the building's architectural ingenuity, the luxury living experience is enhanced with a stylish rooftop garden lounge that radiates elegance and comfort, along with the added perks of a well-located bar.

Actual renders of the rooftop garden and bar





Actual renders of the gymnasium

### GYMNASIUM AND CLUBHOUSE

The in-house gymnasium is furnished and equipped with a variety of high end equipment for fitness and physical training, alongside a spacious clubhouse designed for recreational purposes and hosting every kind of event.

### HOME AUTOMATION

The property takes **home security** to new heights, with top of the line, round the clock security facilities including high quality CCTV coverage, intercoms, etc. With digital home automation systems and access authentication, sophisticated smart technology facilities are utilised to enhance convenience and functionality.

### MULTILEVEL CAR PARK SPACE

The property provides a safe and convenient multilevel parking facility with automated security features.

### CONCIERGE SERVICE

From day to day needs, renting cabs, ordering food to taking care of your guests.

### OTHER AMENITIES

- A/C units for a centralised, full home A/C experience.
- Access control for Residents/Visitors with secured lift usage and access to common amenities.
- 5 years maintenance from Anantara.
- Customer service facility – exclusive lifetime in-house maintenance services for Anantara customers only.
- Premium electrical solutions and bath experiences for every unit.

**ANANTARA**  
LIVING SPACES PVT LTD



A PROJECT BY **GROUP PRIORITY**  
*A legacy built on trust*



# ANANTARA

## ELYSIAN

Designed by

DP ARCHITECTS

📍 Near Goa Science Centre, Miramar, Panaji, Goa.

☎ +91 9011 915 711 / 9158 886 061

✉ [welcome@anantaraluxury.com](mailto:welcome@anantaraluxury.com) 🌐 [www.anantaraluxury.com](http://www.anantaraluxury.com)

All illustrations are artistic impressions only. All landscaping features are subject to local authorities approval. The information contained in this brochure is subject to change as may be required by the authorities or the company and are not a part of an offer or contract. While every reasonable care is taken in providing this information, the developers cannot be held responsible for any inaccuracy.