

For Enquiries & Bookings, Contact

..

M/s PRIORITY CONSTRUCTIONS

📍 'Priority Signature', Near Skoda Showroom,
New Taleigao By-pass Road, Taleigao, Goa. 403 003

☎ : +91 832 242 2999 / +91 9011 915 711 / +91 904 987 222

✉ : sales.constructions@grouppriority.com

🌐 : www.grouppriority.com

Architect : Mr. Kundan Prabhu
Structural Engineer : Mr. Yogesh Bhobe

All illustrations are artistic impressions only. All landscaping features are subject to local authorities approval. The information contained in this brochure is subject to change as may be required by the authorities or the company and are not a part of an offer or contract. While every reasonable care is taken in providing this information, the developers cannot be held responsible for any inaccuracy.



**2BHK
LIFESTYLE APARTMENTS**



Priority Constructions brings you Priority Royale, a scheme of two bedroom lifestyle apartments at Mercedes, Goa.

A colony advocating and fulfilling Goan dreams by living in a serene neighbourhood and yet close to the bustling city life.

Homes that rejuvenate you instantly and yet give you a sense of lush green environs surrounding your adobe and convenience, Priority Royale has been designed and fitted with premium specifications and finishes keeping in mind customers satisfaction at all times.

Catering to the ever increasing need for affordable homes in Goa, Priority Constructions gives you an excellent opportunity to have a great home with all the facilities of a premium housing scheme well within your budget.

Priority Royale is equipped with landscaped gardens, jogging track, club house, dedicated kids play, gymnasium and supermarket, the perfect place to raise your family in security and comfort.

A home that would make you save your valuable time and money. An investment that would guarantee you make a statement "Right Decision, Life Changing Decision"

Rera Registration Number :

A Project by:



Birds Eye View



A RETREAT OF YOUR OWN

Senior Citizen Friendly Building

Intercom in all Flats

Car Side Protection Cladding in Stilt Parking

Designated Car Parking for Residents & Visitors

CCTV Cameras at Strategic Locations

Elevator (lift) facilities for each block

Back Up Power Generator 24x7

Inverter Provision in Flats

Security & water Back-up 24x7

Earthquake Resistant Structural Design

Underground Cabling

Provision for Satellite TV Connection

Polished Granite Window Still Tops

Service Verandah with Washing Machine
& Dishwasher Provision

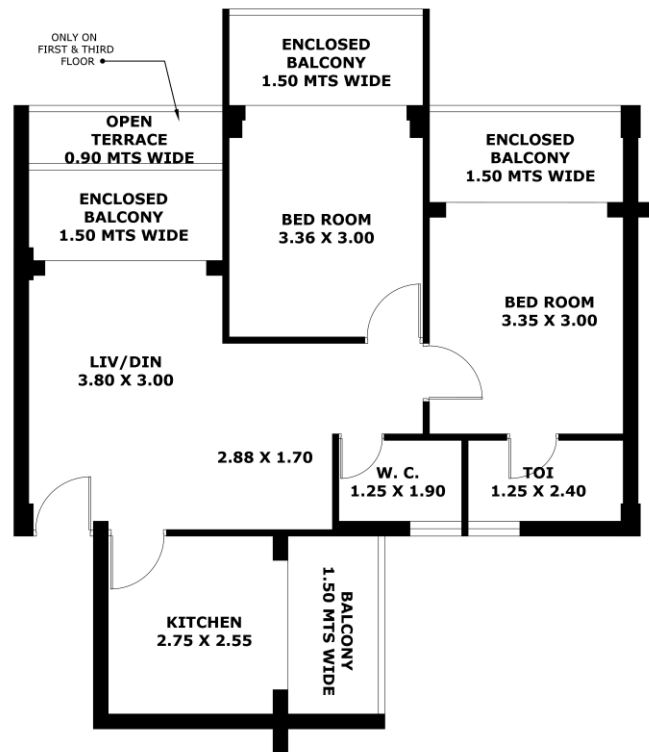
With Serene natural Ambience
& Lush Green Surroundings



Area

Flat No:	101 & 301	201 & 401
Saleable	93	90

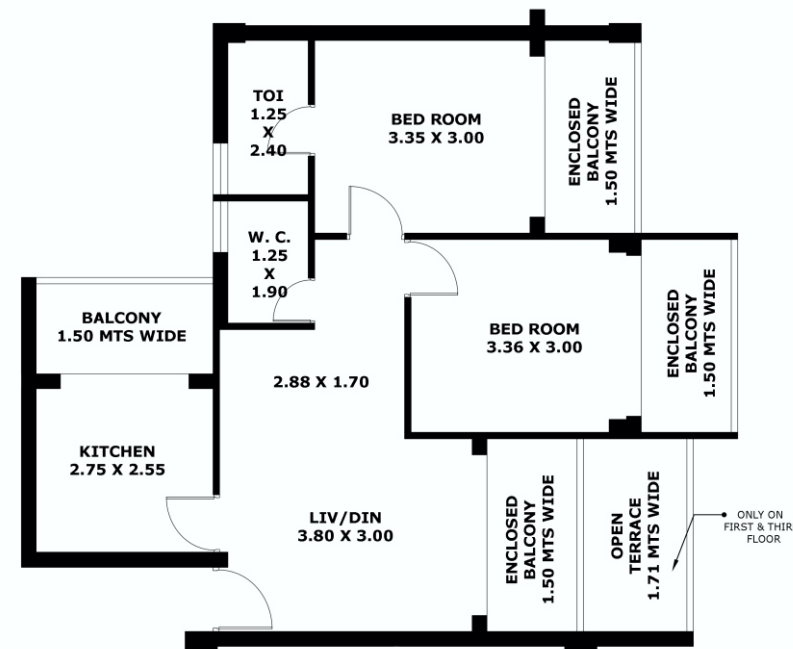
All areas are in Sq. Mts



Area

Flat No:	102 & 302	202 & 402
Saleable	95	90

All areas are in Sq. Mts





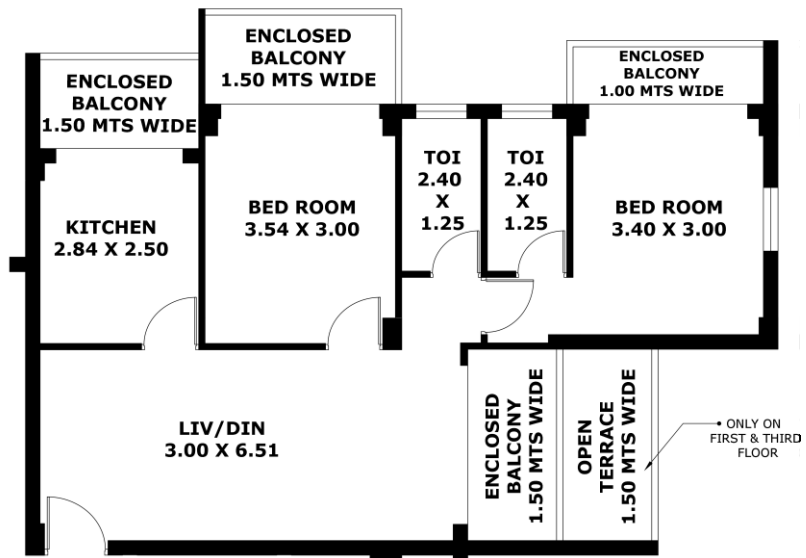
Area

Flat No:	103 & 303	203 & 403
Saleable	99	90

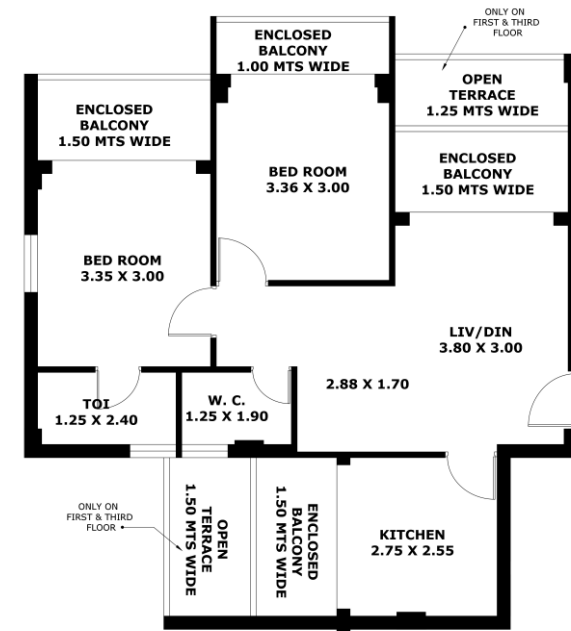


Area

Flat No:	104 & 304	204 & 404
Saleable	93	86



All areas are in Sq. Mts



All areas are in Sq. Mts



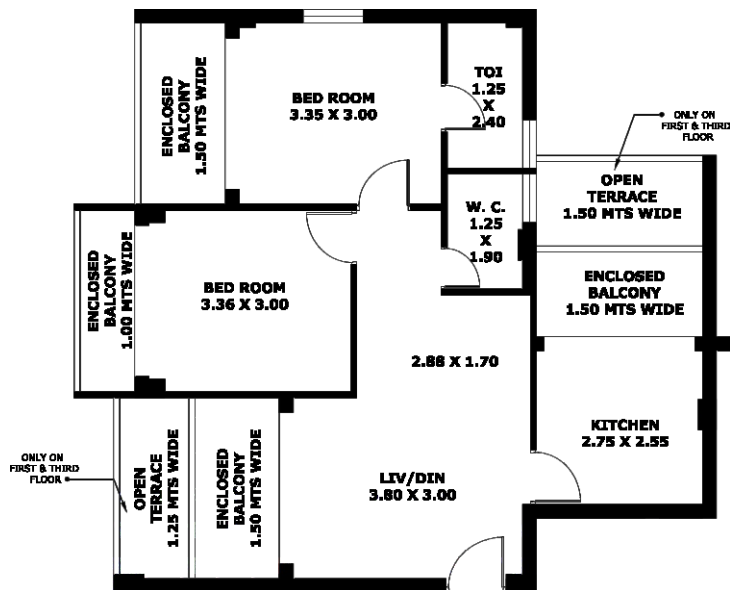
Area

Flat No:	105 & 305	205 & 405
Saleable	93	86

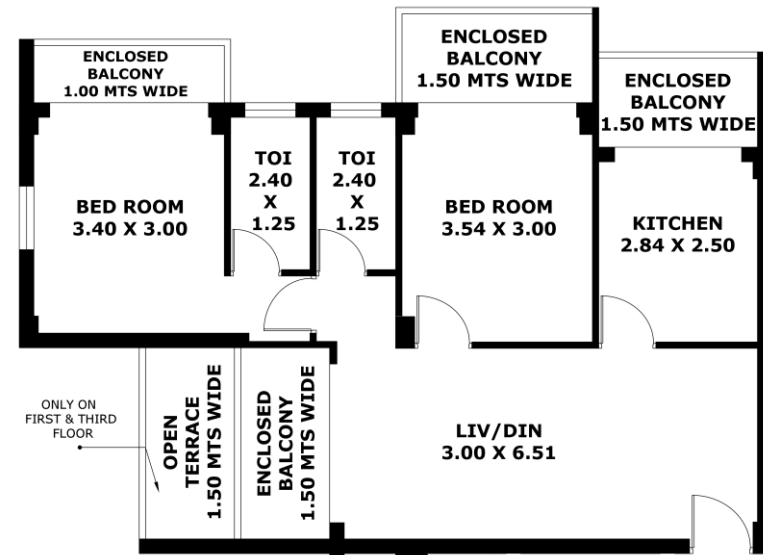


Area

Flat No:	106 & 306	206 & 406
Saleable	99	95



All areas are in Sq. Mts



All areas are in Sq. Mts



Located at Village Cujira under Village Panchayat of St. Cruz

Within the City But Without its Chaos.

Goa Medical College	Approx. 5 mins	Panjim Inox Theater & Market	Approx. 15 mins
Cujira School Complex & International Games Stadium	Approx. 5 mins	Goa University	Approx. 10 mins
Panjim Main Bus Stand	Approx. 8 mins	Miramar Beach	Approx. 15 mins
Patto Commercial Plaza	Approx. 9 mins	Karmali Railway Station	Approx. 20 mins
Grand Hyatt Hotel & Bambolim Beach	Approx. 10 mins	Dabolim Airport	Approx. 38 mins

M/s Priority Constructions is one of the Members of the Indian Green Building Council (IGBC)

Membership No: IGBC-CS-3255

Benefits of Green New Buildings

Green New Buildings can have tremendous benefits, both tangible and intangible. The most tangible benefits are the reduction in water and energy consumption right from day one of occupancy. The energy savings could range from 20-30% and water savings around 30-50%. The intangible benefits of green new buildings include enhanced air quality, excellent daylighting, health & well-being of the occupants, safety benefits and conservation of scarce national resources.

