


Distinctive homes for the family



 VASSUDEVA
CITADEL
B I C H O L I M



LIVING CLOSE TO NATURE

Vassudeva Citadel is designed to be an elite residential apartment complex. It combines practicality with contemporary facilities making it the ideal place to house your family.

The project offers 44 two bedroom apartments, spacious, and well illuminated with natural light. Peaceful surroundings and proximity to the necessities of daily life enhance its value.

The project itself is simple, practical and functional, guaranteed to be a delight to the user.

AMENITIES

Vassudeva Citadel is in close proximity to the Bicholim commercial hub and yet in the midst of lush greenery, giving you the kind of peace you look for in a home.

Besides, it is in proximity to places of worship, tourist destinations such as the Mayem lake, schools and hospitals.

The project itself is equipped to give you the feeling of living in a town and yet away from the hustle and bustle of a busy environment.



Swimming pool



Children's play area

Power generators

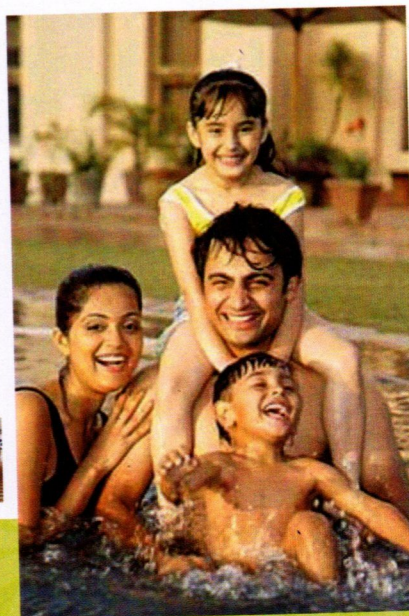
High compound walls

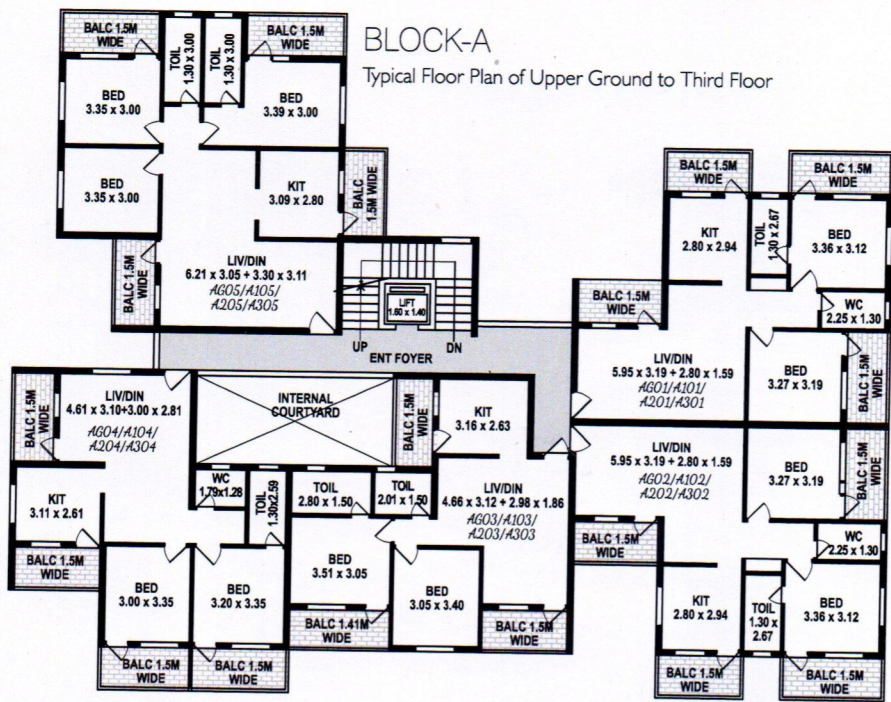


Stilt parking

Round-the-clock security

Lift with power back-up





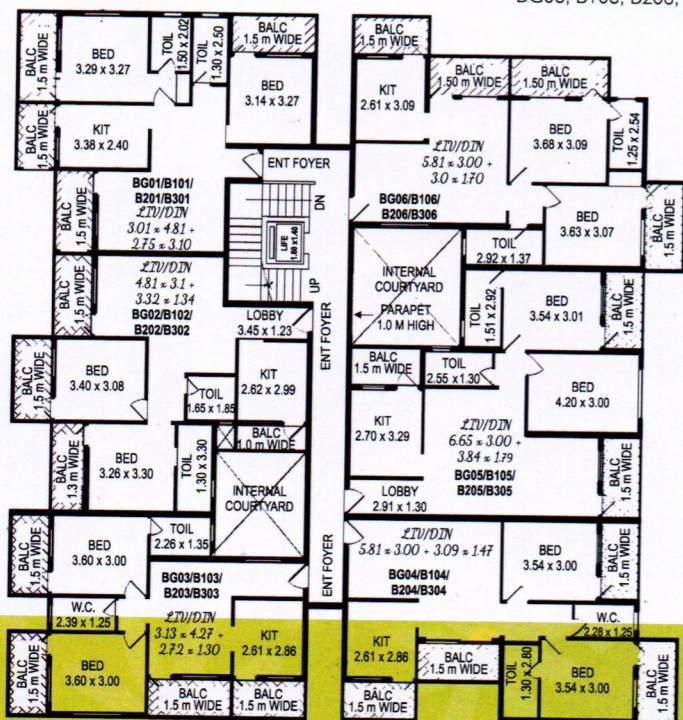
No.	Type	Area
AG01, A101, A201, A301	2BHK	99.86
AG02, A102, A202, A302	3BHK	99.43
AG03, A103, A203, A303	2BHK	89.49
AG04, A104, A204, A304	2BHK	96.77
AG05, A105, A205, A305	3BHK	122.14

FLOOR PLANS

BLOCK-B

Typical Floor Plan of
Upper Ground to Third floor

No.	Type	Area
BG01, B101, B201, B301	2BHK	96.28
BG02, B102, B202, B302	2BHK	95.42
BG03, B103, B203, B303	2BHK	87.94
BG04, B104, B204, B304	2BHK	95.51
BG05, B105, B205, B305	2BHK	102.80
BG06, B106, B206, B306	2BHK	100.10



SPECIFICATIONS

Structure

RCC framed structure.

Masonry works

Internal half brick masonry and 20 cm thick laterite masonry works externally.

Door works

Matti/Sal wood frames, flush door shutters for all rooms except main door and toilet. Main door with teak wood shutter finished with French polish, with magic eye. WC and Bath doors shall be of FRP.

Windows

Anodized aluminium sliding windows along with all accessories fitted with plain glass and aluminium fittings.

Flooring & Tiling Work

Vitrified tiled flooring with top class vitrified tiles of Varmora or equivalent with colours for all rooms. WC and toilets will have full height, designer glazed ceramic tiles dado.

Kitchen

Granite platform over double khadappa support shall be provided with stainless steel sink. Glazed ceramic tiled dado above platform upto 60 cm height. A loft along longer side provided.

Water supply

Large overhead tank and underground tank will be provided. All taps will be chromium plated brass hardware of oriental collection from Crabtree/Ark or equivalent.

Finishing

Internal walls plastered with Neeru finish and painted with oil bound distemper. External walls with double coat cement plaster with sponge finish and painted with premium exterior emulsion paints. Lift wall entrance finished with granite cladding.

Electrical

Fully concealed copper wiring. Multistrand wiring Finolex/Anchor or equivalent. Miniature circuit breakers for safety from overload and short circuit. Cable TV and telephone points in each unit. Provision for AC, water purifier, washing machine and power inverter.

Plumbing and Sanitation

All plumbing lines with CPVC pipes and building drainage of PVC.

Toilets

Toilets shall have one floor mounted EWC of Cera make or equivalent, shower, tap with hot and cold mixers, wash basin, provision for geyser, health faucet.

Extras

Power Backup for lifts and common lighting. Sewage Treatment Plant for the complex.



SITE PLAN

