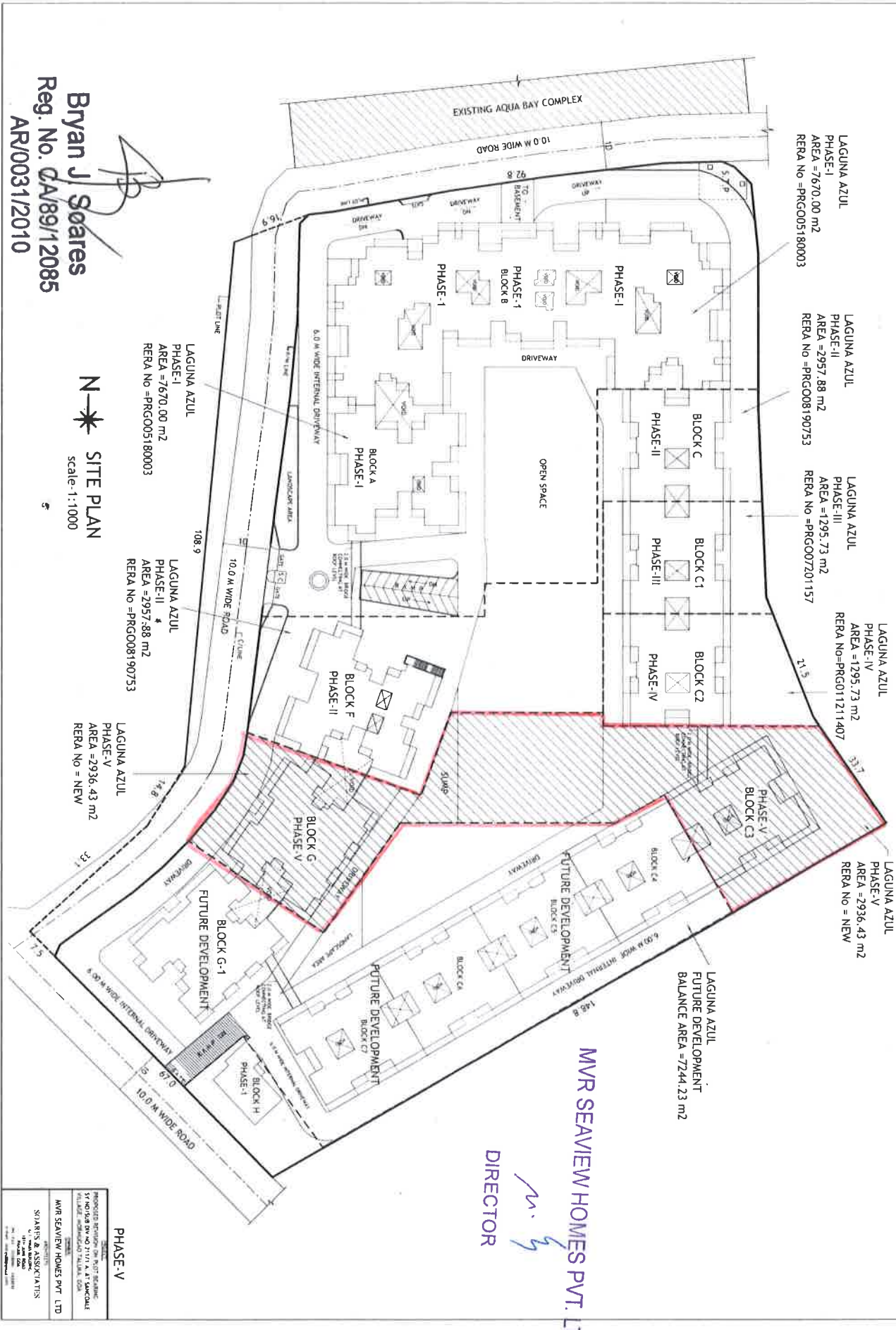


**Bryan J Soares**  
 Reg. No. CA89/12085  
 AR/0031/2010

**SITE PLAN**  
 Scale: 1:1000



LAGUNA AZUL  
 PHASE-I  
 AREA = 7670.00 m<sup>2</sup>  
 RERA No = PRG005180003

LAGUNA AZUL  
 PHASE-II  
 AREA = 2957.88 m<sup>2</sup>  
 RERA No = PRG008190753

LAGUNA AZUL  
 PHASE-III  
 AREA = 1295.73 m<sup>2</sup>  
 RERA No = PRG007201157

LAGUNA AZUL  
 PHASE-IV  
 AREA = 1295.73 m<sup>2</sup>  
 RERA No = PRG011211407

LAGUNA AZUL  
 PHASE-V  
 AREA = 2936.43 m<sup>2</sup>  
 RERA No = NEW

LAGUNA AZUL  
 PHASE-I  
 AREA = 7670.00 m<sup>2</sup>  
 RERA No = PRG005180003

LAGUNA AZUL  
 PHASE-II  
 AREA = 2957.88 m<sup>2</sup>  
 RERA No = PRG008190753

LAGUNA AZUL  
 PHASE-V  
 AREA = 2936.43 m<sup>2</sup>  
 RERA No = NEW

LAGUNA AZUL  
 FUTURE DEVELOPMENT  
 BALANCE AREA = 7244.23 m<sup>2</sup>

**MVR SEAVIEW HOMES PVT. LTD.**

*M. S.*  
**DIRECTOR**

**PHASE-V**

PROPOSED DEVELOPMENT ON THE 10<sup>TH</sup> BALANCE  
 5<sup>TH</sup> FLOOR PLAN NO 21171 A & B SANGHAI  
 10<sup>TH</sup> FLOOR PLAN NO 21171 C & D SANGHAI

MVR SEAVIEW HOMES PVT. LTD

SOARES & ASSOCIATES