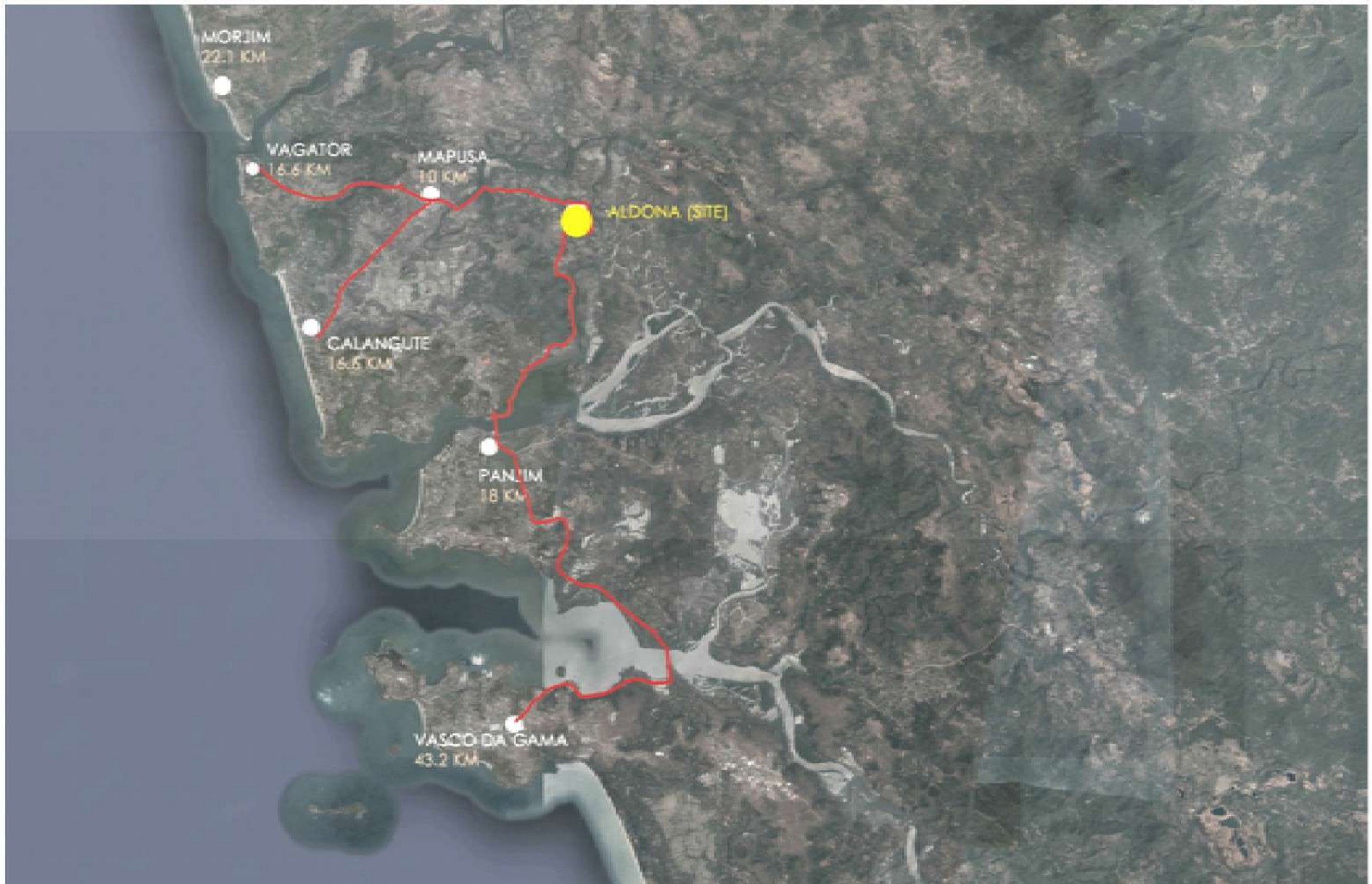




Susheela Homes

aldona

Location



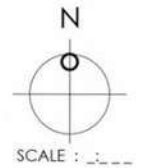




Site Plan



SITE PLAN
5 15 M



Site Elevation



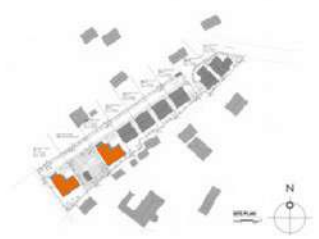
Type A [Exterior view]



Type A [Exterior view]



Type A [Floor Plans]



BUA- Lower G =121.77 sqm
 BUA- G =204.38 sqm
 BUA- G+1 =183.39 sqm
 Total BUA =509.54 sqm

- 1). VERANDAH (3.6X1.7)
- 2). DINNING (6.0X4.3)
- 3). FAMILY ROOM (6.0X5.0)
- 4). BALCONY 1 (6.0X1.5)
- 5). BALCONY (5.8X1.5)
- 6). STORE (4.4X1.7)
- 7). KITCHEN (5.0X3.7)
- 8). LIFT (1.5X1.5)
- 9). BEDROOM (5.0X3.5)
- 10). VERANDAH (3.5X1.0)
- 11). TOILET 1 (1.5X1.2)
- 12).TOILET 2 (3.3X1.8)
- 13) DRESSER (2.4X1.8)
- 14). COURTYARD (5.6X5.6)



Ground Floor Plan

Type A [Floor Plans]



- 1). VERANDAH (9.5X2.4)
- 2). FAMILY ROOM (4.0X3.6)
- 3). BEDROOM (5.0X3.6)
- 4). SERVANT ROOM (5.0X3.5)
- 5). TOILET 1 (2.0X1.7)
- 6). TOILET 2 (3.3X1.5)
- 7). LIFT (1.5X1.5)
- 8). VERANDAH (3.0X1.9)
- 9). DRESSER (1.6X1.4)



Lower Ground Floor Plan

Type A [Floor Plans]



- 1). COVERED TERRACE (6.5X6.2)
- 2). BALCONY (6.0X1.5)
- 3). BALCONY (5.8X1.5)
- 4). BEDROOM (6.0X3.8)
- 5). FAMILY ROOM (6.0X4.0)
- 6). BEDROOM (5.0X3.6)
- 7). TOILET (3.3X1.8)
- 8). DRESSER (1.8X1.6)
- 9). TOILET (3.3X1.8)
- 10). DRESSER (2.6X1.8)
- 11). LIFT (1.5X1.5)
- 12). TERRACE (3.0X2.7)
(1.7X1.4)



First Floor Plan

Type B [Exterior view]



Type B [Exterior view]



Type B [Floor Plans]



BUA- G =152.65 sqm
BUA- G+1 =142.91 sqm
BUA- ATTIC =15.61 sqm
Total BUA =311.17 sqm

- 1). DINNING ROOM (8.4X4.9)
- 2). BEDROOM (4.5X3.4)
- 3). KITCHEN (3.4X3.1)
- 4). FAMILY ROOM (5.8X4.1)
- 5). TOILET 1 (3.6X1.8)
- 6). TOILET 2 (2.0X1.8)
- 7). VERANDAH (3.4X1.4)
- 8). VERANDAH (4.3X1.2)



Ground Floor Plan

Type B [Floor Plans]



- 1). FAMILY ROOM (6.6X4.9)
- 2). BEDROOM 1 (6.5X3.6)
- 3). TOILET 1 (3.1X1.8)
- 4). BEDROOM 2 (4.9X3.6)
- 5). TOILET 2 (3.6X1.8)
- 6). BALCONY (5.1X1.2)
- 7). TERRACE (6X4.7)
- 8). BALCONY (2.8X0.9)

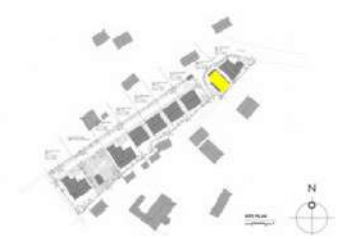


First Floor Plan

Type C [Exterior view]

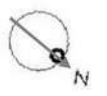


Type C [Floor Plans]



BUA- G =152.65 sqm
BUA- G+1 =138.5 sqm
Total BUA =291.15 sqm

- 1). FAMILY ROOM (5.1X5.1)
- 2). BEDROOM 1 (4.5X3.6)
- 3). TOILET 1 (3.0X1.8)
- 4). DRESSER (2.2X1.8)
- 5). KITCHEN (4.5X3.8)
- 6). STORE (3.9X1.7)
- 7). DINNING (4.5X3.5)
- 8). TOILET (2.2X1.2)
- 9). VERANDAH (3.6X1.8)
- 10). VERANDAH (3.6X0.8)



Ground Floor Plan

Type C [Floor Plans]



- 1). TERRACE (5.9X5.9)
- 2). FAMILY ROOM (6.0X3.7)
- 3). BEDROOM 1 (4.5X3.6)
- 4). DRESSER (2.2X1.8)
- 5). TOILET (3.0X1.8)
- 6). BEDROOM (4.5X3.6)
- 7). TOILET (3.0X1.8)
- 8). BALCONY (4.9X1.2)
- 9). BALCONY (3.6X0.8)

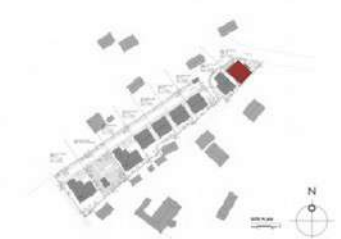


First Floor Plan

Type D [Exterior view]



Type D [Floor Plans]



BUA- G =162.59 sqm
BUA- G+1 =140.81 sqm
Total BUA =303.4 sqm

- 1). FAMILY ROOM (5.0X4.5)
- 2). BEDROOM 1 (5.0X3.9)
- 3). TOILET 1 (3.0X1.8)
- 4). DRESSER (1.9X1.8)
- 5). KITCHEN (4.5X3.0)
- 6). STORE (4.6X1.8)
- 7). DINNING (6.1X3.4)
- 8). TOILET (2.2X1.2)
- 9). VERANDAH (3.2X2.4)
- 10). VERANDAH (1.5X1.5)



Ground Floor Plan

Type D [Floor Plans]



- 1). TERRACE (5.9X4.3)
- 2). FAMILY ROOM (4.6X3.7)
- 3). BEDROOM 1 (5.6X3.9)
- 4). DRESSER (1.9X1.8)
- 5). TOILET (3.0X1.8)
- 6). BEDROOM (4.6X3.9)
- 7). TOILET (4.6X1.8)
- 8). BALCONY (2.4X2.0)
- 9). BALCONY (2.4X1.1)



First Floor Plan

LIST OF ALL LICENSES FOR ALDONA PROPERTY

Survey No : 296/40

Area ____ : 900 Sq mtrs

1. Technical clearance order from TCP Mapusa dated **25th November 2016 with order no TPB/256/TCP-16/3495 (VALID FOR 3 YRS).**
2. NOC from Primary Health Centre Aldona dated **06th December 2016 with no PHC/Aldon/NOC/Const/2016-17/1488.**
3. Construction license from village Panchayat Aldona dated **31st December 2016 with no VPA/F-14/2533/16-17/19 (VALID FOR 3 YRS).**
4. Conversion Sanad from District Collector North Goa **dated 27th April 2017 with no RB/CNV/BAR/COLL/40/2016/795.**

Survey No : 296/51

Area ____ : 4300 Sq mtrs

1. Technical clearance order from TCP Mapusa dated **7th July 2017 with order no TPB/2884/ALD/TCP-17/1967 (VALID FOR 3 YRS).**
2. Construction license from village Panchayat Aldona **dated 1st August 2017 with no VPA/P-5/1156/17-18 (VALID FOR 3 YRS).**
3. Conversion Sanad from Additional Collector III North Goa **dated 11th September 2017 with no 4/76/CNV/AC-III/2016/1053.**

PROJECT DETIALS

- TOTAL PLOT AREA = 5200 sq.mts.

PLOT	AREA	B.U. AREA	
P1	332.61	303.4	
P2	374.8	291.15	
P3	270.56	311.17	
P4	282.16	311.17	
P5	285.41	311.17	
P6	321.9	338.76	
P7	508.05	509.54	
P8	575.91		OPEN SPACE.
P9	613.71	509.54	

SALE OFFER.

- OPTION 1

OUT RIGHT SALE : RS. 6.50 CRS.

- OPTION 2

J V RS. 3.00 CRS ON SIGNING

+ VILLA ON PLOT P9 AND P3

▪

- OPTION 3
BOOK ALL 8 VILLAS
- PAY 25 % ON AGREEMENT
- REST AS PER STAGE
- RS. 60,000 PER SQ.MT. OF BUA.