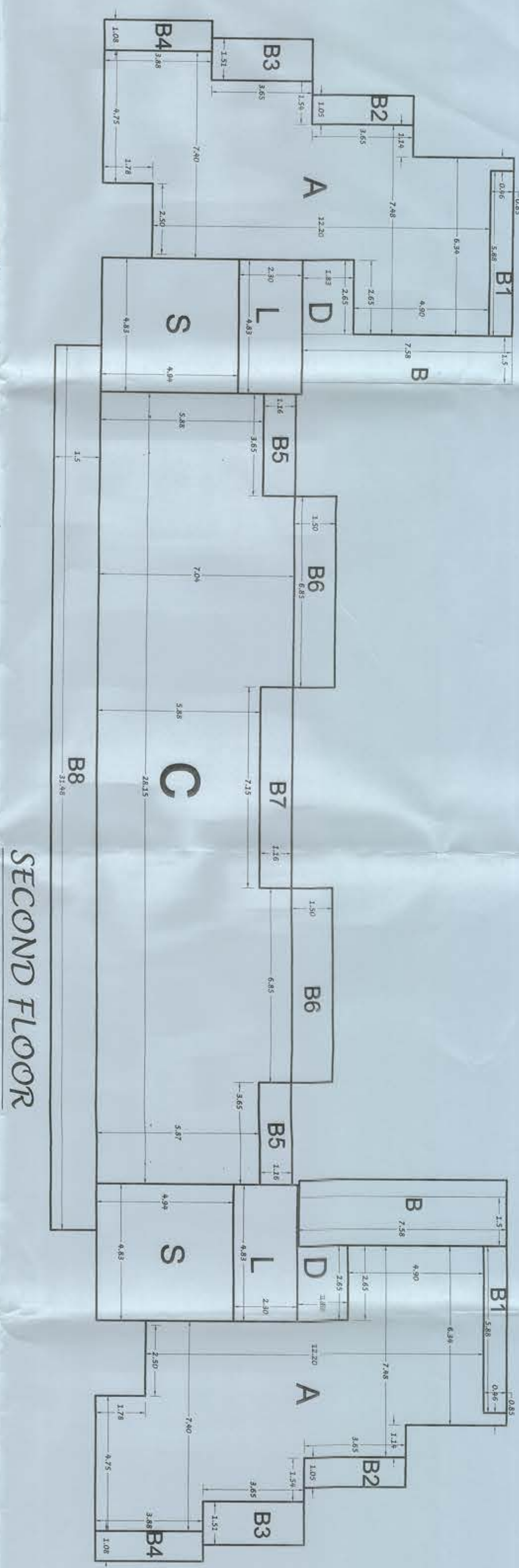


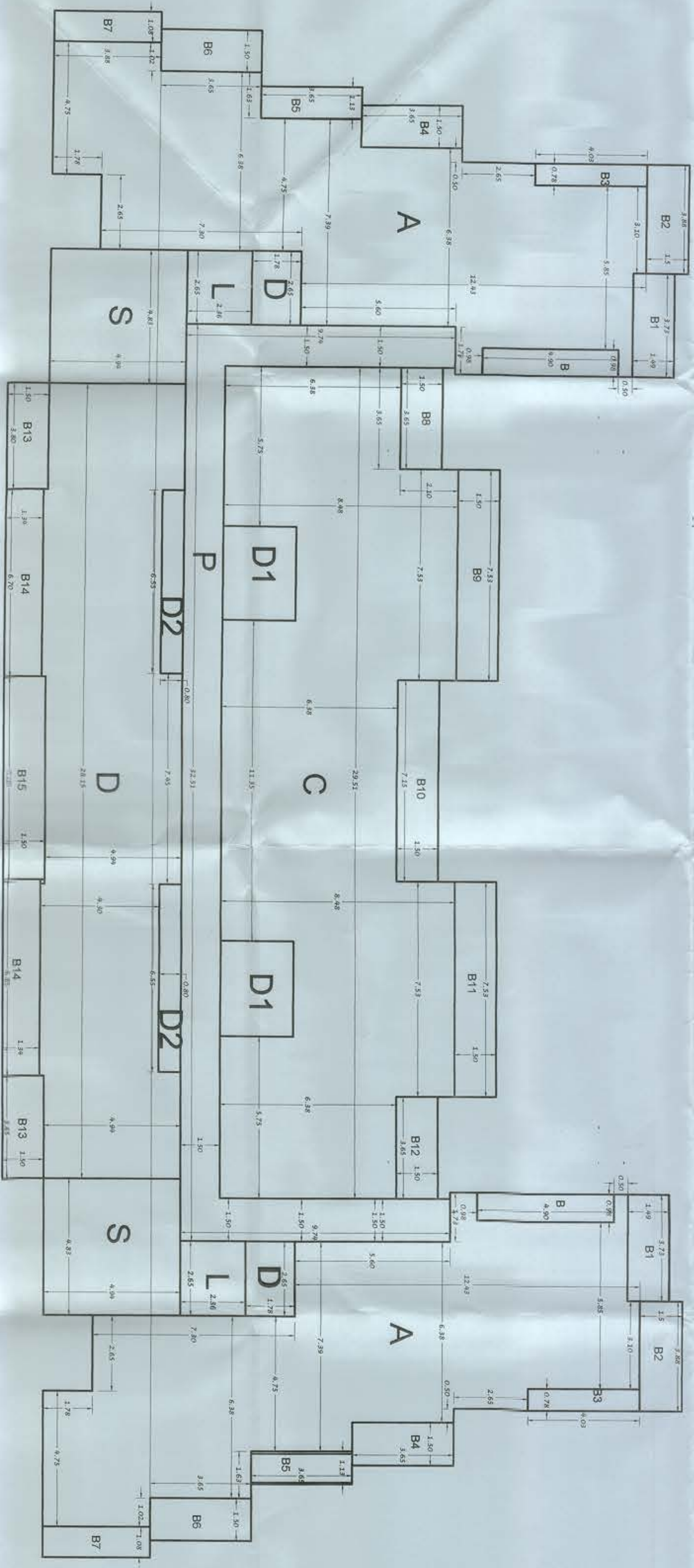
AREA DIAGRAM



SECOND FLOOR

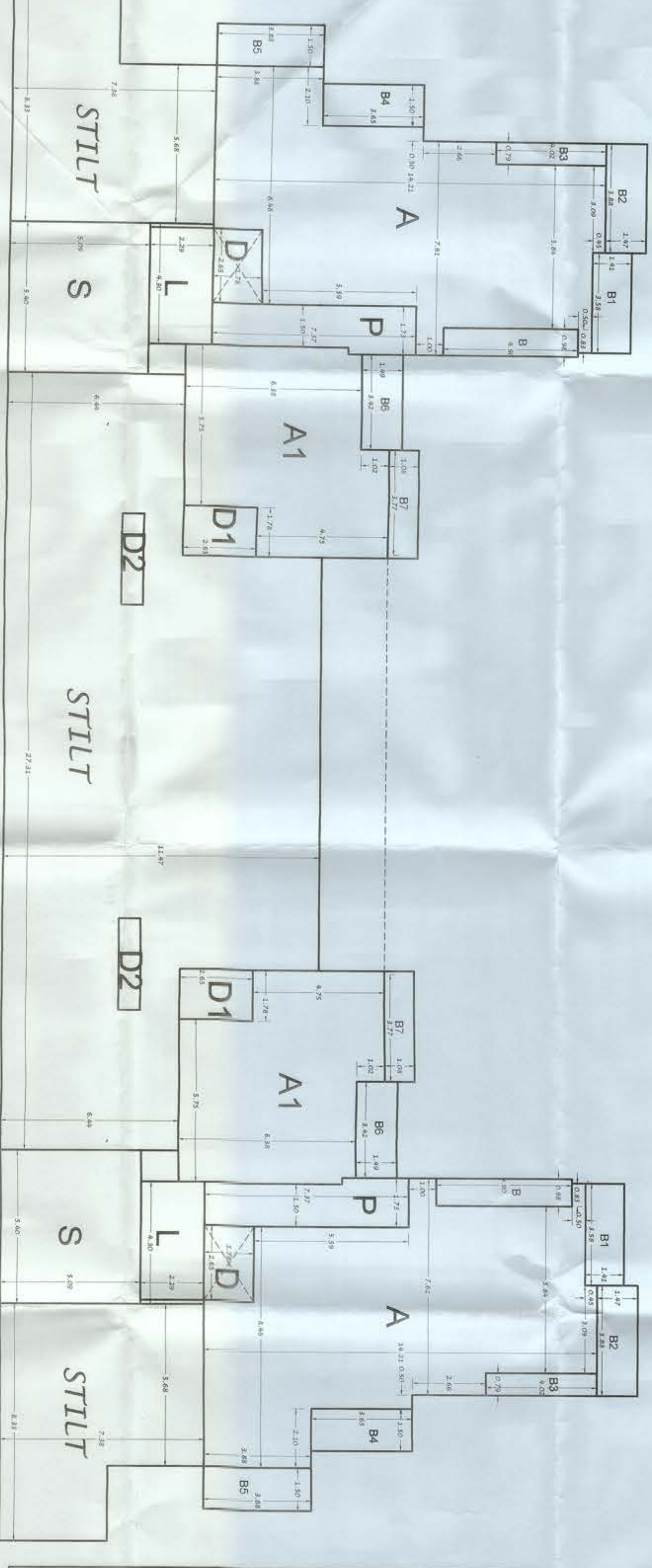
SECOND FLOOR AREA
 A = 89 M² X 2 = 270 SQMTS
 B = 17.5 M²
 B1 = 5.0 M²
 B2 = 3.8 M²
 B3 = 5.5 M²
 B4 = 4.0 M²
 Total = 35.8 M² X 2 = 71.6 M²
 B5 = 4.0 M² X 2 = 8 M²
 B6 = 10.0 M² X 2 = 20 M²
 B7 = 8.3 M²
 B8 = 5.2 M²
 Total = 88 M²
TOTAL BALCONIES AREA = 160 M²
 L = 12 M² (6+6)
 S = 27 M² X 2 = 54 M²
B.U.A = 677 SQMTS
N.F.A = 451 SQMTS
TOTAL = 451.0 M²
 D = 5 M² X 2 = 10.0
B.U.A = 677 SQMTS
N.F.A = 451 SQMTS

UPPER GROUND FLOOR AND FIRST FLOOR

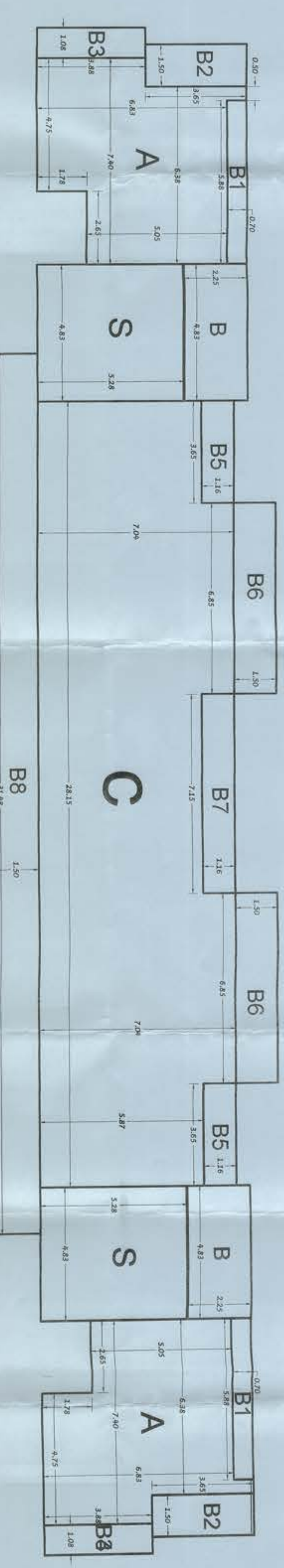


UPPER GROUND FLOOR AND FIRST FLOOR AREA
 A = 135.0 M² X 2 = 270 SQMTS
 B = 4.8 M²
 B1 = 5.0 M²
 B2 = 5.7 M²
 B3 = 3.0 M²
 B4 = 5.0 M²
 B5 = 4.0 M²
 B6 = 5.0 M²
 B7 = 4.0 M²
 B8 = 5.5 M²
 B9 = 11 M²
 B10 = 11 M²
 B11 = 11 M²
 B12 = 5.5 M²
 B13 = 5.7 M² X 2
 B14 = 9 M² X 2
 B15 = 18 M²
 B15 = 11 M²
TOTAL = 600.0 M²
 D = 5 M² X 2 = 10.0
 D1 = 8.8 M² X 2 = 17.6
 D2 = 2.5 M² X 2.5 = 5.0
TOTAL = 32.6 M²
B.U.A = 899 SQMTS
N.F.A = 600 SQMTS
B.U.A = 1798 SQMTS
N.F.A = 1200 SQMTS
TOTAL BALCONIES AREA = 163 M²
B.U.A = 899 SQMTS
N.F.A = 600 SQMTS
B.U.A = 1798 SQMTS
N.F.A = 1200 SQMTS
TOTAL = 600.0 M²
B.U.A = 899 SQMTS
N.F.A = 600 SQMTS
B.U.A = 1798 SQMTS
N.F.A = 1200 SQMTS
TOTAL BALCONIES AREA = 163 M²

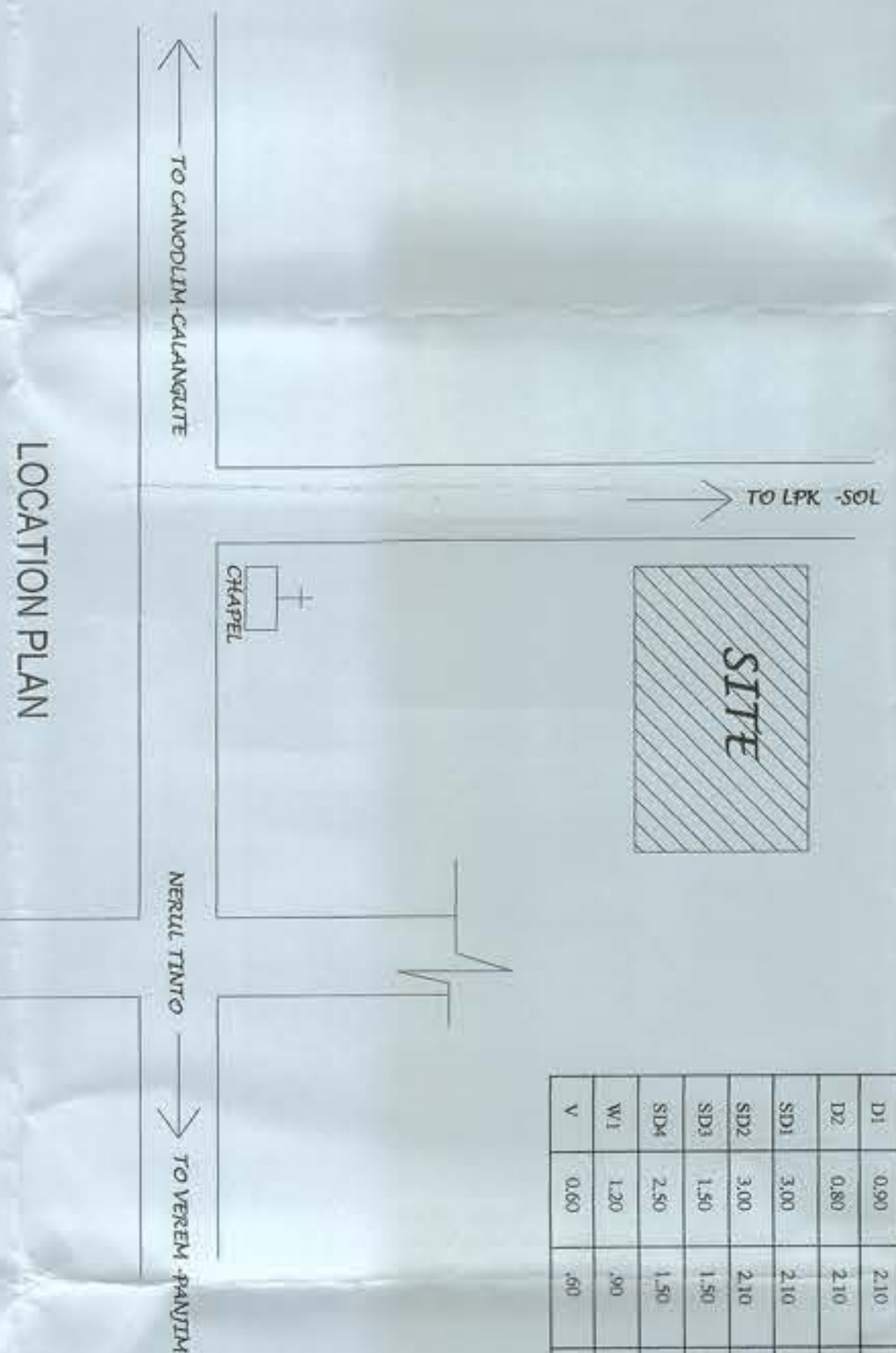
GROUND FLOOR



GROUND FLOOR AREA
 A = 92.0 M² X 2 = 184 SQMTS
 B = 4.8 M²
 B1 = 5.0 M²
 B2 = 5.7 M²
 B3 = 3.0 M²
 B4 = 5.0 M²
 B5 = 5.8 M²
 B6 = 5.0 M²
 B7 = 4.0 M²
 P = 11 M²
 L = 9.5 M²
 S = 27 M²
TOTAL = 383.3 M² X 2 = 766.6 M²
B.U.A = 707.6 SQMTS
NET .F. AREA = 184 SQMTS
COVERAG = 831 M²
D = 5 M²
D1 = 5 M²
D2 = 2.5 M²
STILLT = 352 SQMTS



THIRD FLOOR AREA
 A = 4.3 M² X 2 = 8.6 SQMTS
 B = 10.8 M²
 B1 = 4.0 M²
 B2 = 5.5 M²
 B3 = 4.0 M²
 Total = 24.3 M² X 2 = 48.6 M²
B.U.A = 404 SQMTS
N.F.A = 267 SQMTS
TOTAL = 267 M²
B.U.A = 404 SQMTS
N.F.A = 267 SQMTS
TOTAL BALCONIES AREA = 137 M²
S = 27 M² X 2 = 54 M²



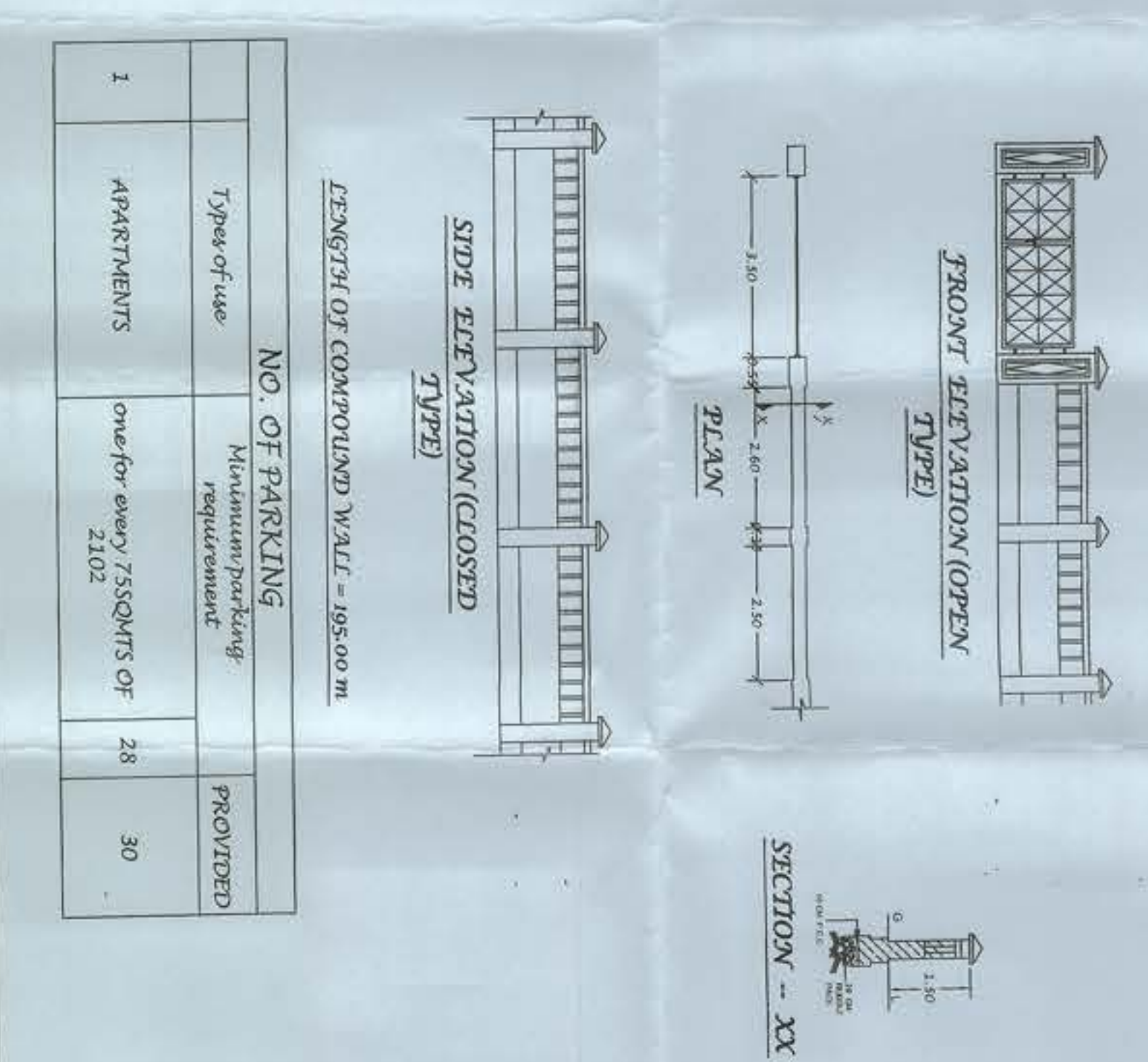
DOORS / WINDOWS SCHEDULE

NO.	TYPE	WIDTH	HEIGHT	REMARKS
01	600	210	210	SINGLE PANEL TALK WOOD
02	600	210	210	SINGLE PANEL TALK WOOD
03	120	210	210	ALUMINIUM (ELBING)
04	120	210	210	ALUMINIUM (ELBING)
05	120	210	210	ALUMINIUM (ELBING)
06	120	210	210	ALUMINIUM (ELBING)
07	120	210	210	ALUMINIUM (ELBING)
08	120	210	210	ALUMINIUM (ELBING)
09	120	210	210	ALUMINIUM (ELBING)
10	120	210	210	ALUMINIUM (ELBING)
11	120	210	210	ALUMINIUM (ELBING)
12	120	210	210	ALUMINIUM (ELBING)
13	120	210	210	ALUMINIUM (ELBING)
14	120	210	210	ALUMINIUM (ELBING)
15	120	210	210	ALUMINIUM (ELBING)
16	120	210	210	ALUMINIUM (ELBING)
17	120	210	210	ALUMINIUM (ELBING)
18	120	210	210	ALUMINIUM (ELBING)
19	120	210	210	ALUMINIUM (ELBING)
20	120	210	210	ALUMINIUM (ELBING)
21	120	210	210	ALUMINIUM (ELBING)
22	120	210	210	ALUMINIUM (ELBING)
23	120	210	210	ALUMINIUM (ELBING)
24	120	210	210	ALUMINIUM (ELBING)
25	120	210	210	ALUMINIUM (ELBING)
26	120	210	210	ALUMINIUM (ELBING)
27	120	210	210	ALUMINIUM (ELBING)
28	120	210	210	ALUMINIUM (ELBING)
29	120	210	210	ALUMINIUM (ELBING)
30	120	210	210	ALUMINIUM (ELBING)
31	120	210	210	ALUMINIUM (ELBING)
32	120	210	210	ALUMINIUM (ELBING)
33	120	210	210	ALUMINIUM (ELBING)
34	120	210	210	ALUMINIUM (ELBING)
35	120	210	210	ALUMINIUM (ELBING)
36	120	210	210	ALUMINIUM (ELBING)
37	120	210	210	ALUMINIUM (ELBING)
38	120	210	210	ALUMINIUM (ELBING)
39	120	210	210	ALUMINIUM (ELBING)
40	120	210	210	ALUMINIUM (ELBING)
41	120	210	210	ALUMINIUM (ELBING)
42	120	210	210	ALUMINIUM (ELBING)
43	120	210	210	ALUMINIUM (ELBING)
44	120	210	210	ALUMINIUM (ELBING)
45	120	210	210	ALUMINIUM (ELBING)
46	120	210	210	ALUMINIUM (ELBING)
47	120	210	210	ALUMINIUM (ELBING)
48	120	210	210	ALUMINIUM (ELBING)
49	120	210	210	ALUMINIUM (ELBING)
50	120	210	210	ALUMINIUM (ELBING)
51	120	210	210	ALUMINIUM (ELBING)
52	120	210	210	ALUMINIUM (ELBING)
53	120	210	210	ALUMINIUM (ELBING)
54	120	210	210	ALUMINIUM (ELBING)
55	120	210	210	ALUMINIUM (ELBING)
56	120	210	210	ALUMINIUM (ELBING)
57	120	210	210	ALUMINIUM (ELBING)
58	120	210	210	ALUMINIUM (ELBING)
59	120	210	210	ALUMINIUM (ELBING)
60	120	210	210	ALUMINIUM (ELBING)
61	120	210	210	ALUMINIUM (ELBING)
62	120	210	210	ALUMINIUM (ELBING)
63	120	210	210	ALUMINIUM (ELBING)
64	120	210	210	ALUMINIUM (ELBING)
65	120	210	210	ALUMINIUM (ELBING)
66	120	210	210	ALUMINIUM (ELBING)
67	120	210	210	ALUMINIUM (ELBING)
68	120	210	210	ALUMINIUM (ELBING)
69	120	210	210	ALUMINIUM (ELBING)
70	120	210	210	ALUMINIUM (ELBING)
71	120	210	210	ALUMINIUM (ELBING)
72	120	210	210	ALUMINIUM (ELBING)
73	120	210	210	ALUMINIUM (ELBING)
74	120	210	210	ALUMINIUM (ELBING)
75	120	210	210	ALUMINIUM (ELBING)
76	120	210	210	ALUMINIUM (ELBING)
77	120	210	210	ALUMINIUM (ELBING)
78	120	210	210	ALUMINIUM (ELBING)
79	120	210	210	ALUMINIUM (ELBING)
80	120	210	210	ALUMINIUM (ELBING)
81	120	210	210	ALUMINIUM (ELBING)
82	120	210	210	ALUMINIUM (ELBING)
83	120	210	210	ALUMINIUM (ELBING)
84	120	210	210	ALUMINIUM (ELBING)
85	120	210	210	ALUMINIUM (ELBING)
86	120	210	210	ALUMINIUM (ELBING)
87	120	210	210	ALUMINIUM (ELBING)
88	120	210	210	ALUMINIUM (ELBING)
89	120	210	210	ALUMINIUM (ELBING)
90	120	210	210	ALUMINIUM (ELBING)
91	120	210	210	ALUMINIUM (ELBING)
92	120	210	210	ALUMINIUM (ELBING)
93	120	210	210	ALUMINIUM (ELBING)
94	120	210	210	ALUMINIUM (ELBING)
95	120	210	210	ALUMINIUM (ELBING)
96	120	210	210	ALUMINIUM (ELBING)
97	120	210	210	ALUMINIUM (ELBING)
98	120	210	210	ALUMINIUM (ELBING)
99	120	210	210	ALUMINIUM (ELBING)
100	120	210	210	ALUMINIUM (ELBING)

AREA STATEMENT

FLOOR REFERENCE	USE	TOTAL BUILTUP AREA/M ²	PASSAGE	RAMP	BAL	STAIRCASE	LOBBY/ SERVICE	PARKING	75% FREE FAR	NET FLOOR AREA
GROUND FLOOR/PARKING	RESIDENTIAL	707.6	22	78.6	54	19	352			184
1 ST FLOOR	RESIDENTIAL	899	70	183	54	12	600			800
2 ND FLOOR	RESIDENTIAL	899	70	183	54	12	600			800
3 RD FLOOR	RESIDENTIAL	677	160	54	12		451			451
4 TH FLOOR	RESIDENTIAL	404	137	54			287			287
TOTAL		3686.6	182	670	270	55	352			1876

AREA FOR INFRA TAX = 3686.6 - PARKING = 3686.6 - 352 = 3234.6 M²



AREA STATEMENT OF AREAS

NO. OF PARKING	APARTMENTS	PROVIDED
1	28	30

LENGTH OF EXTERIOR WALL = 86.00 M

TYPE OF WALL: SIDE ELEVATION (CLOSED) TYPE

TYPE OF WALL: FRONT ELEVATION (OPEN) TYPE

SECTION - XX

DESCRIPTION	AREA (SQ.MTS)	%
TOTAL AREA OF PLOT	2780	
ROAD WIDENING	160.08	
NET PLOT AREA	2619.92	
PROPOSED COVERED AREA	NIL	
COVERAGE PERMISSIBLE (1047.98 M ²)	40.0	%
COVERAGE CONSUMED 831 / 2619.92 X 100	31.7	%
CALCULATION FOR PERMISSIBLE FAR		
80% ON 2780 = 2224.0		
FAR CONSUMED 2102 / 2780 X 100	2102.0	sq.mts
	75.6	%
FAR PERMISSIBLE	2224.0	sq.mts
FAR PERMISSIBLE	80.0	%

PROJECT PROPOSED CONSTRUCTION OF RESIDENTIAL BUILDING IN LAND BEARING SURVEY NO. 15 SUB DIV. NO. 2A SITUATED AT VILLAGE NERUL OF BARDEZ TALUKA - GOA, BELONGING TO MR. LALIT VERMA

SHEET TITLE: SANCTION DRAWING

SCALE: 1:100, 1:500

OWNERS SIGNATURE: [Signature]

ENGINEER'S SIGNATURE: [Signature]