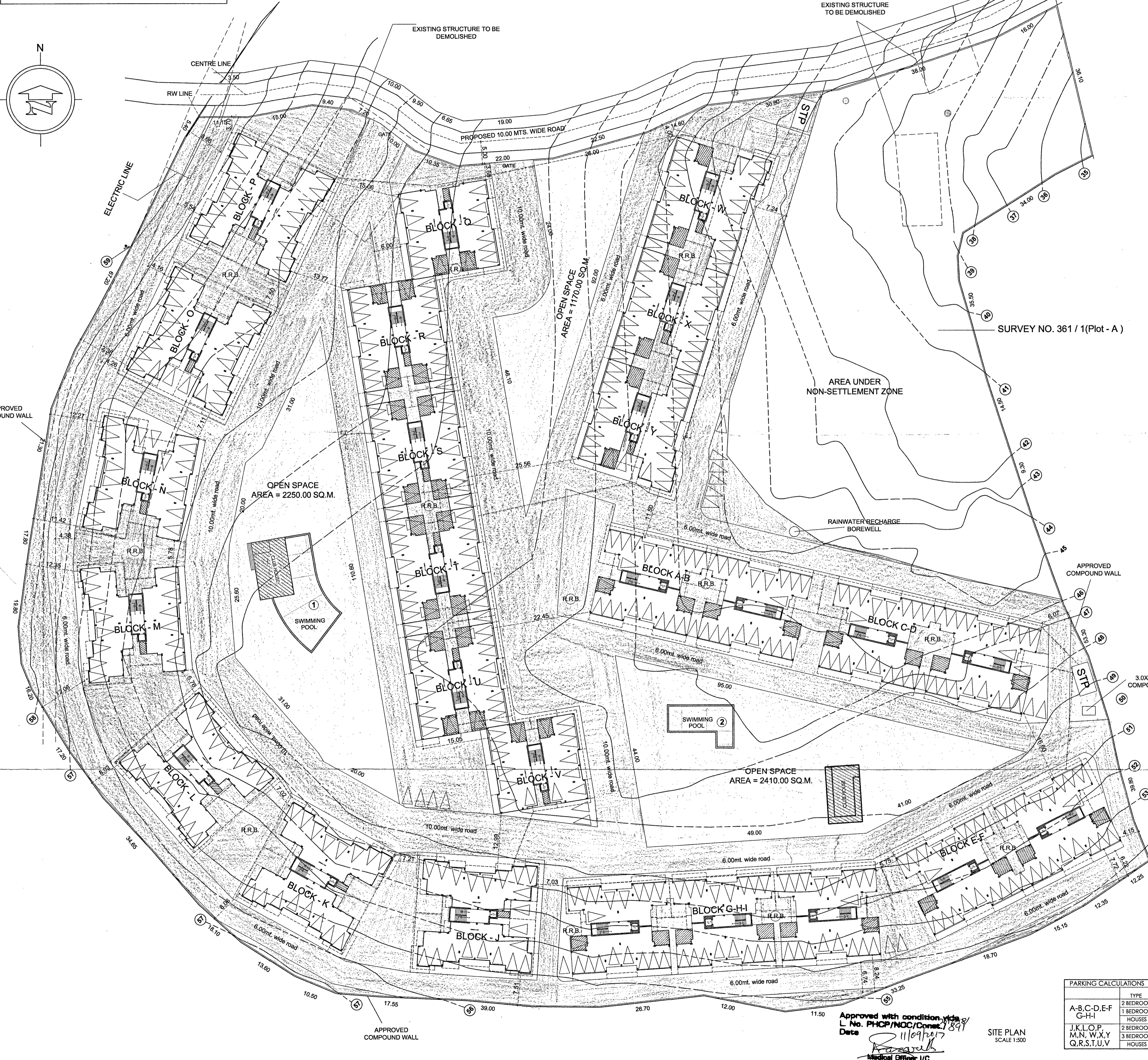
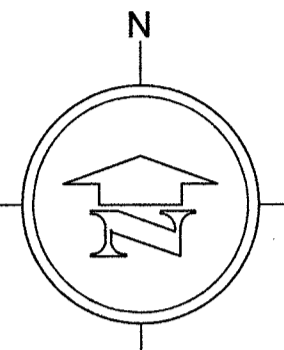
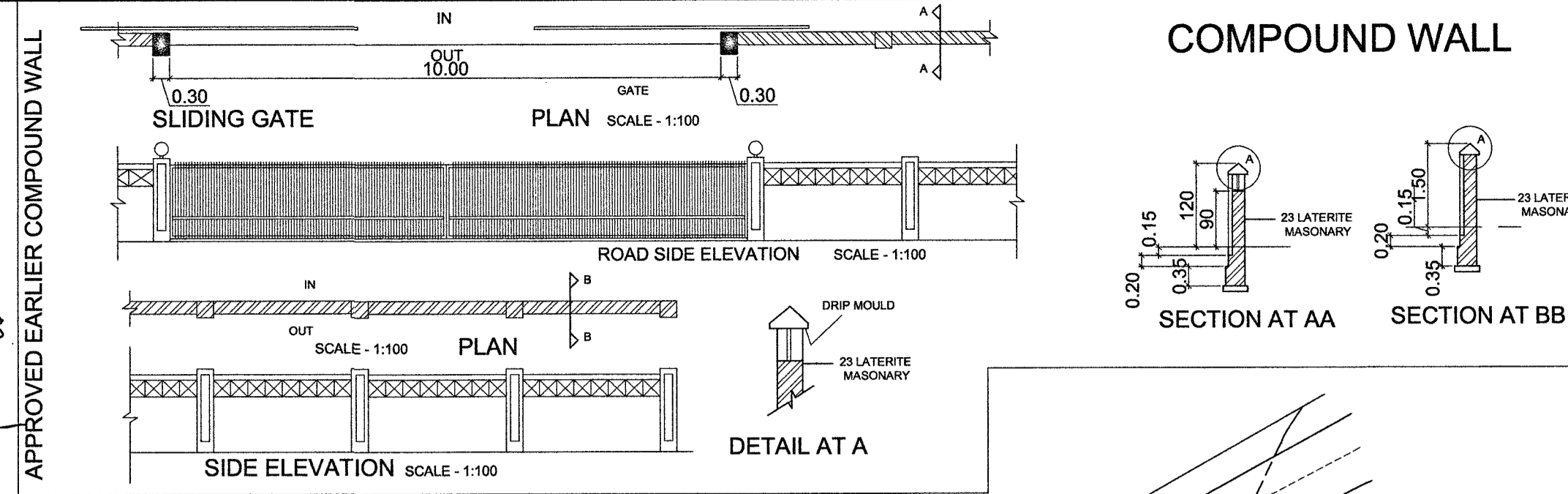


APPROVED EARLIER BUILDINGS
A-B,C-D-E-F & G-H-I
BUILDINGS, CLUB HOUSE AND
COMPOUND WALL APPROVED EARLIER
VIDE TECHNICAL CLEARANCE ORDER
NO. TPB/797/TCP/14/3582 DT. 10/11/2014

APPROVED EARLIER BUILDINGS
J,K,L,M,N,O,P,Q,R,S,T,U,V,W,X & Y
BUILDINGS & CLUB HOUSE APPROVED
EARLIER VIDE TECHNICAL CLEARANCE
ORDER NO. TPB/797/TCP-15/856
DT. 05/03/2015

Passed and Approved
Vide Res. No. 1 dt. 16/6/2017
Subject to the Conditions
Mentioned on the Permission
No. VP/Soc/116/2017-18
Dated: 20/6/2017
Secretary
V. P. Socorro



SOLAR WATER HEATER / SOLAR ENERGY CAPTURING SYSTEM				
BUILDINGS	S No.	No. OF PERSONS	HOT WATER REQUIREMENT	TOTAL PROVISION PROPOSED
A-B-C-D-E-F G-H-I	1	144x4=576	576 Persons @ 10 litres / person = 5760 litres	5760 Litres 6000 Litres
J,K,L,O,P, M,N,W,X,Y Q,R,S,T,U,V	2	120x4=480 120x8=960	1200 Persons @ 10 litres / person = 12000 litres	12000 Litres 12500 Litres
TOTAL		1776 Persons		

CALCULATION FOR SEWAGE TREATMENT PLANT AND WASTE MANAGEMENT			
S No.	BLDG.	No. OF PERSONS	
1	A,B,C,D,E,F G,H,I	144x4=576	
2	J,K,L,O,P, M,N,W,X,Y Q,R,S,T,U,V	120x4=480 120x8=960	
TOTAL		1776 Persons	

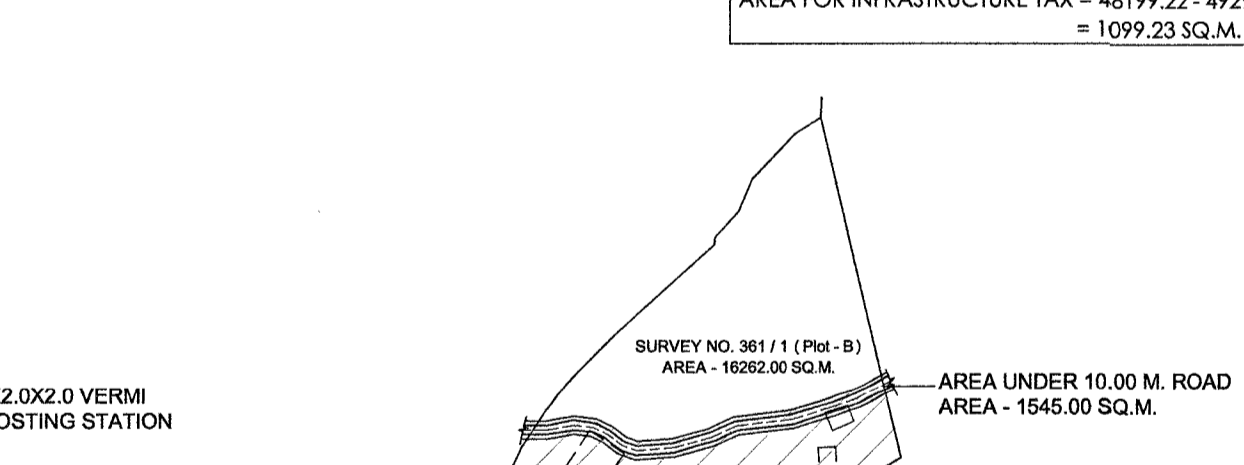
SEWAGE TREATMENT PLANT	
1776X108 Litres/Person	7.0M X 3.1M X 3.5M D
= 191908 Litres = 192 M ³ volume	8.5M X 4M X 3.5M D
	136.00 M ³ VOLUME

SOLID WASTE VERMI COMPOSTING UNIT	
1776X300 Gms/Person	3.0M X 2.0M X 2.0M D
= 532800 Gms = 533 Kgs/Day	
(20000 M ³ volume @ 2 Tonne/Day)	12.00 M ³ volume
Total volume = 0.2665x10 ⁶ days	
= 8.00 M ³	

AREAS FREE FROM FAR										
FLOORS	TOTAL BUILT-UP AREA	STILTS	BALCONIES / TERRACES / LIFTS	STAIRS 7.5% FREE F.A.R.	CLUB HOUSE POOL	TOTAL	FLOOR AREA			
BLOCK A-B-C-D-E-F	1348.41	1241.49	98.28	72.72		1339.77	8.64			
LOWER GR.	2510.52	1170.66	302.28	98.28		1643.94	866.58			
UPPER GR.	2652.00	750.12	98.28	106.74		3505.14	1696.86			
FIRST	2502.90	601.02	98.28	106.74		3308.94	1696.86			
SECOND	1308.30	270.72	98.28	72.72		1749.02	866.58			
THIRD	670.20	616.74	49.14	36.36		1372.30	4.32			
GROUND	1255.26	565.33	151.14	49.14		1921.87	433.29			
UPPER GR.	1326.00	375.06	49.14	53.37		1803.57	848.43			
FIRST	1251.45	300.51	49.14	53.37		1704.47	848.43			
SECOND	1251.45	300.51	49.14	53.37		1704.47	848.43			
THIRD	654.15	135.36	49.14	36.36		875.01	433.29			
LOWER GR.	1179.05	1025.05	92.25	41.70		2308.05	20.05			
GROUND	2503.05	1026.75	420.70	66.95		4016.55	976.40			
UPPER GR.	2849.95	741.75	92.25	92.10		3764.95	1523.85			
FIRST	2849.95	741.75	92.25	92.10		3764.95	1523.85			
SECOND	2849.95	741.75	92.25	92.10		3764.95	1523.85			
THIRD	1470.75	333.95	92.25	66.90		1963.85	977.65			
LOWER GR.	406.46	344.86	36.90	16.66		704.88	8.02			
GROUND	906.12	410.72	115.52	42.02		1474.38	311.10			
UPPER GR.	1013.20	249.14	36.90	36.84		1336.04	690.32			
FIRST	1013.20	249.14	36.90	36.84		1336.04	690.32			
SECOND	1013.20	249.14	36.90	36.84		1336.04	690.32			
THIRD	588.28	133.60	36.90	26.76		785.54	391.02			
LOWER GR.	2575.36	2379.38	110.70	50.04		5014.48	35.24			
UPPER GR.	3024.24	1083.02	119.70	110.52		4337.48	1720.00			
FIRST	2513.42	572.20	110.70	110.52		3306.84	1720.00			
SECOND	2639.42	698.20	110.70	110.52		3558.84	1720.00			
THIRD	2513.42	572.20	110.70	110.52		3306.84	1720.00			
LOWER GR.	678.38	586.58	55.35	25.02		1265.33	12.03			
GROUND	1440.44	551.63	292.28	43.14		2287.49	501.04			
UPPER GR.	1552.83	496.95	55.35	55.27		2155.40	943.26			
FIRST	1465.66	411.78	55.35	55.27		2033.06	943.26			
SECOND	1466.26	412.38	55.35	55.27		2033.06	943.26			
THIRD	708.32	152.96	55.35	40.14		956.77	459.87			
CLUB HOUSE	205.92					205.92				
FIRST	170.04					170.04				
SW POOL	326.63					326.63				
TOTAL	5923.64	9939.19	12458.15	2550.14	2094.29	702.59	27744.36	31493.28		

AREA STATEMENT	
AREA OF THE PLOT S.No. 361/1	61875.00 M ²
AREA OF THE PLOT A OF PLOT S.No. 361/1	45613.00 M ²
AREA OF THE PLOT B OF PLOT S.No. 361/1	16262.00 M ²
AREA STATEMENT OF THE PLOT A OF PLOT S.No. 361/1	
PLOT AREA	45613.00 M ²
PLOT AREA UNDER SETTLEMENT ZONE	39882.00 M ²
PLOT AREA NOT UNDER SETTLEMENT ZONE	5731.00 M ²
AREA IN ROAD & RW IN SETTLEMENT ZONE	1123.00 M ²
AREA IN ROAD & RW NOT UNDER SETTLEMENT ZONE	422.00 M ²
TOTAL AREA IN RW	1545.00 M ²
NET PLOT AREA UNDER SETTLEMENT ZONE	38759.00 M ²
NET PLOT AREA NOT UNDER SETTLEMENT ZONE	5309.00 M ²
PERMISSIBLE COVERAGE @ 40% FOR SETTLEMENT ZONE (40% OF 38759.00)	15503.60 M ²
F.A.R. PERMISSIBLE = (80% OF 39882.00)	31905.60 M ²
COVERED AREA OF BUILDINGS (addition+exist)	
BUILDINGS A-B-C-D-E-F	49.70 X 732.35 = 3640.36 X 3 = 10921.08 M ²
BUILDING G-H-I	74.55 X 1094.52 = 81673.52 M ²
TYPE 1 (BLOCK J,K,L,O,P)	445.52 X 5 = 2227.60 M ²
TYPE 2 (BLOCK M,N)	413.08 X 2 = 826.16 M ²
TYPE 3 (BLOCK Q,R,S,T,U,V)	288.58 X 2 = 577.16 M ²
TYPE 4 (BLOCK W,X,Y)	86.57 X 1203.69 = 104212.86 M ²
CLUB HOUSE	205.92 M ²
TOTAL COVERED AREA (addition+exist)	10640.52 M ²
COVERAGE CONSUMED	27.45 %
BUILT UP AREA	
BUILDINGS A-B-C-D-E-F (addition+exist)	448.47 X 3 = 1345.41 M ²
B.U.A. ON LOWER GR. FLOOR	48.70 X 787.14 = 38256.43 M ²
B.U.A. ON GROUND FLOOR	48.70 X 787.14 = 38256.43 M ²
B.U.A. ON U. GROUND FLOOR	48.70 X 834.30 = 40620.47 M ²
B.U.A. ON FIRST FLOOR	834.30 X 3 = 2502.90 M ²
B.U.A. ON SECOND FLOOR	834.30 X 3 = 2502.90 M ²
B.U.A. ON THIRD FLOOR	435.10 X 3 = 1305.30 M ²
BUILDING G-H-I (addition+exist)	
B.U.A. ON LOWER GR. FLOOR	670.20 M ²
B.U.A. ON GROUND FLOOR	74.55 X 1180.71 = 87987.26 M ²
B.U.A. ON UPPER GROUND FLOOR	74.55 X 1251.45 = 93285.00 M ²
B.U.A. ON FIRST FLOOR	1251.45 M ²
B.U.A. ON SECOND FLOOR	1251.45 M ²
B.U.A. ON THIRD FLOOR	654.15 M ²
TYPE 1 (BLOCK J,K,L,O,P) (addition+exist)	
B.U.A. ON LOWER GR. FLOOR	235.81 X 5 = 1179.05 M ²
B.U.A. ON GROUND FLOOR	4.28 X 512.33 = 2192.77 M ²
B.U.A. ON UPPER GROUND FLOOR	516.81 X 5 = 2584.05 M ²
B.U.A. ON FIRST FLOOR	4.28 X 565.71 = 2419.02 M ²
B.U.A. ON SECOND FLOOR	569.98 X 5 = 2849.95 M ²
B.U.A. ON THIRD FLOOR	569.98 X 5 = 2849.95 M ²
B.U.A. ON GROUND FLOOR	294.15 X 5 = 1470.75 M ²
TYPE 2 (BLOCK M,N) (addition+exist)	
B.U.A. ON LOWER GR. FLOOR	203.23 X 2 = 406.46 M ²
B.U.A. ON GROUND FLOOR	4.28 X 448.78 = 1900.37 M ²
B.U.A. ON UPPER GROUND FLOOR	4.28 X 502.32 = 2141.93 M ²
B.U.A. ON FIRST FLOOR	4.28 X 502.32 = 2141.93 M ²
B.U.A. ON SECOND FLOOR	506.60 X 2 = 1013.20 M ²
B.U.A. ON THIRD FLOOR	506.60 X 2 = 1013.20 M ²
B.U.A. ON GROUND FLOOR	294.14 X 2 = 588.28 M ²
TYPE 3 (BLOCK Q,R,S,T,U,V)	
B.U.A. ON LOWER GR. FLOOR	288.58 X 2 = 577.16 M ²
B.U.A. ON UPPER GROUND FLOOR	314.24 X 2 = 628.48 M ²
B.U.A. ON FIRST FLOOR	25.56 X 2 = 51.12 M ²
B.U.A. ON SECOND FLOOR	25.56 X 2 = 51.12 M ²
B.U.A. ON THIRD FLOOR	25.56 X 2 = 51.12 M ²
TYPE 4 (BLOCK W,X,Y)	
B.U.A. ON LOWER GR. FLOOR	678.38 M ²
B.U.A. ON GROUND FLOOR	99.40 X 1341.04 = 133279.96 M ²
B.U.A. ON UPPER GROUND FLOOR	99.40 X 1453.43 = 144440.83 M ²
B.U.A. ON FIRST FLOOR	12.83 X 1452.83 = 18636.66 M ²
B.U.A. ON SECOND FLOOR	12.83 X 1453.43 = 18636.66 M ²
B.U.A. ON THIRD FLOOR	705.32 M ²
CLUB HOUSE	205.92 M ²
B.U.A. ON GROUND FLOOR	170.04 M ²
B.U.A. ON FIRST FLOOR	170.04 M ²
SWIMMING POOL	1 = 215.12 M ² 2 = 111.51 M ²
TOTAL B.U.A. (addition+exist)	1798.03 X 57439.61 = 59237.64 M ²
REVISIONS	
BUILDINGS A-B-C-D-E-F	2.88 X 3 = 8.64 M ²
FLOOR AREA ON GROUND FLOOR	286.86 X 3 = 860.58 M ²
FLOOR AREA ON UPPER GROUND FLOOR	565.62 X 3 = 1696.86 M ²
FLOOR AREA ON FIRST FLOOR	565.62 X 3 = 1696.86 M ²
FLOOR AREA ON SECOND FLOOR	565.62 X 3 = 1696.86 M ²
FLOOR AREA ON THIRD FLOOR	288.86 X 3 = 866.58 M ²
BUILDING G-H-I	
FLOOR AREA ON LOWER GR. FLOOR	4.32 M ²
FLOOR AREA ON GROUND FLOOR	433.29 M ²
FLOOR AREA ON UPPER GROUND FLOOR	848.43 M ²
FLOOR AREA ON FIRST FLOOR	848.43 M ²
FLOOR AREA ON SECOND FLOOR	848.43 M ²
FLOOR AREA ON THIRD FLOOR	433.29 M ²
TYPE 1 (BLOCK J,K,L,O,P)	
FLOOR AREA ON LOWER GR. FLOOR	4.01 X 5 = 20.05 M ²
FLOOR AREA ON GROUND FLOOR	195.28 X 5 = 976.40 M ²
FLOOR AREA ON UPPER GROUND FLOOR	384.77 X 5 = 1923.85 M ²
FLOOR AREA ON FIRST FLOOR	384.77 X 5 = 1923.85 M ²
FLOOR AREA ON SECOND FLOOR	384.77 X 5 = 1923.85 M ²
FLOOR AREA ON THIRD FLOOR	195.53 X 5 = 977.65 M ²
TYPE 2 (BLOCK M,N)	
FLOOR AREA ON LOWER GR. FLOOR	4.01 X 2 = 8.02 M ²
FLOOR AREA ON GROUND FLOOR	155.55 X 2 = 311.10 M ²
FLOOR AREA ON UPPER GROUND FLOOR	345.16 X 2 = 690.32 M ²
FLOOR AREA ON FIRST FLOOR	345.16 X 2 = 690.32 M ²
FLOOR AREA ON SECOND FLOOR	345.16 X 2 = 690.32 M ²
FLOOR AREA ON THIRD FLOOR	195.51 X 2 = 391.02 M ²
TYPE 3 (BLOCK Q,R,S,T,U,V)	
FLOOR AREA ON LOWER GR. FLOOR	35.24 M ²
FLOOR AREA ON UPPER GROUND FLOOR	1720.00 M ²
FLOOR AREA ON FIRST FLOOR	1720.00 M ²
FLOOR AREA ON SECOND FLOOR	1720.00 M ²
FLOOR AREA ON THIRD FLOOR	1720.00 M ²
TYPE 4 (BLOCK W,X,Y)	
FLOOR AREA ON LOWER GR. FLOOR	12.03 M ²
FLOOR AREA ON GROUND FLOOR	501.04 M ²
FLOOR AREA ON UPPER GROUND FLOOR	943.26 M ²
FLOOR AREA ON FIRST FLOOR	943.26 M ²
FLOOR AREA ON SECOND FLOOR	943.26 M ²
FLOOR AREA ON THIRD FLOOR	459.87 M ²
TOTAL FLOOR AREA (APPROVED EARLIER)	31493.28 M ²
F.A.R. CONSUMED = 31493.28 / 39882.00	78.97
ADDITIONAL FLOOR AREAS FREE OF FAR	
@ 7.5% of F.L. Area = 31493.28 X 7.5%	= 2361.99 sqm
AREA UTILISED	
LOBBY AREA	= 2094.26 M ²
CLUB HOUSE (ground floor)	= 139.90 M ²
CLUB HOUSE (first floor)	= 109.39 M ²
TOTAL AREA	= 2343.55 M ²
TOTAL FREE AREA OF THE FLOOR AREA CONSUMED	= 7.44
OPEN SPACE REQUIRED (15% OF 38759)	5813.85 M ²
OPEN SPACE PROVIDED (2410 + 1170 + 2250)	5830.00 M ²

APPROVED EARLIER	
AREA FOR INFRASTRUCTURE TAX	B.U.A. - STILT = 57539.61 - 9340.39 = 48199.22 SQ.M.
REVISED AREA	
AREA FOR INFRASTRUCTURE TAX	B.U.A. - STILT = 59237.64 - 9939.19 = 49298.45 SQ.M.
AREA FOR INFRASTRUCTURE TAX = 48199.22 - 49298.45	= 1099.23 SQ.M.



TOTAL PLOT AREA OF 361/1 = 61875.00 SQ.M.
PLAN SHOWING NATURAL SUB-DIVISION DUE TO ROAD NOT TO SCALE

NOTE: ALL DIMENSION ARE IN CMS. & MTS.

OWNER
MR. MICHAEL PINTO DE ANDRADE AND OTHERS

ARCHITECT
AR. SIDHARTH D. NAIK
201-A, MATHIAS PLAZA
PANAJI - GOA 403 001
Reg. No: AR/0027/2010

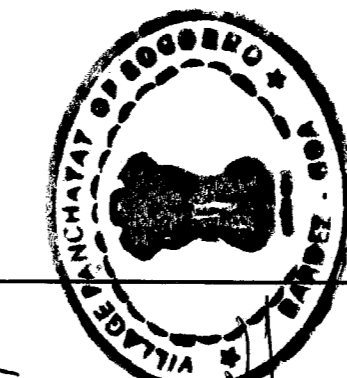
SCALE: 1:100, 1:200 & 1:500 SHEET NO. - 1/10

REVISION OF SWIMMING POOL, ADDITION OF BALCONY & STILT IN RESIDENTIAL BUILDINGS A-B-C-D-E-F-G-H-I, J,K,L,M,N,O,P,Q,R,S,T,U,V,W,X,Y, CLUB HOUSE ON PLOT BEARING SURVEY No 361/1 (PLOT - A) AT SOCORRO VILLAGE, BARDEZ TALUKA, GOA.

M/S ULYSIS
ARCHITECTURE INTERIORS & LANDSCAPE CONSULTANTS
#201 - A, SECOND FLOOR, MATHIAS PLAZA, PANAJIM - GOA 403001
PH. - 91 832 2421950
e-mail : ulysis.goa@gmail.com

Approved with condition vide
L. No. TPB/797/TCP/17/1632
Dy. Town Planner
Town & Country Planning Dept.
Govt. of Goa, Mapusa
dt 26/6/2017

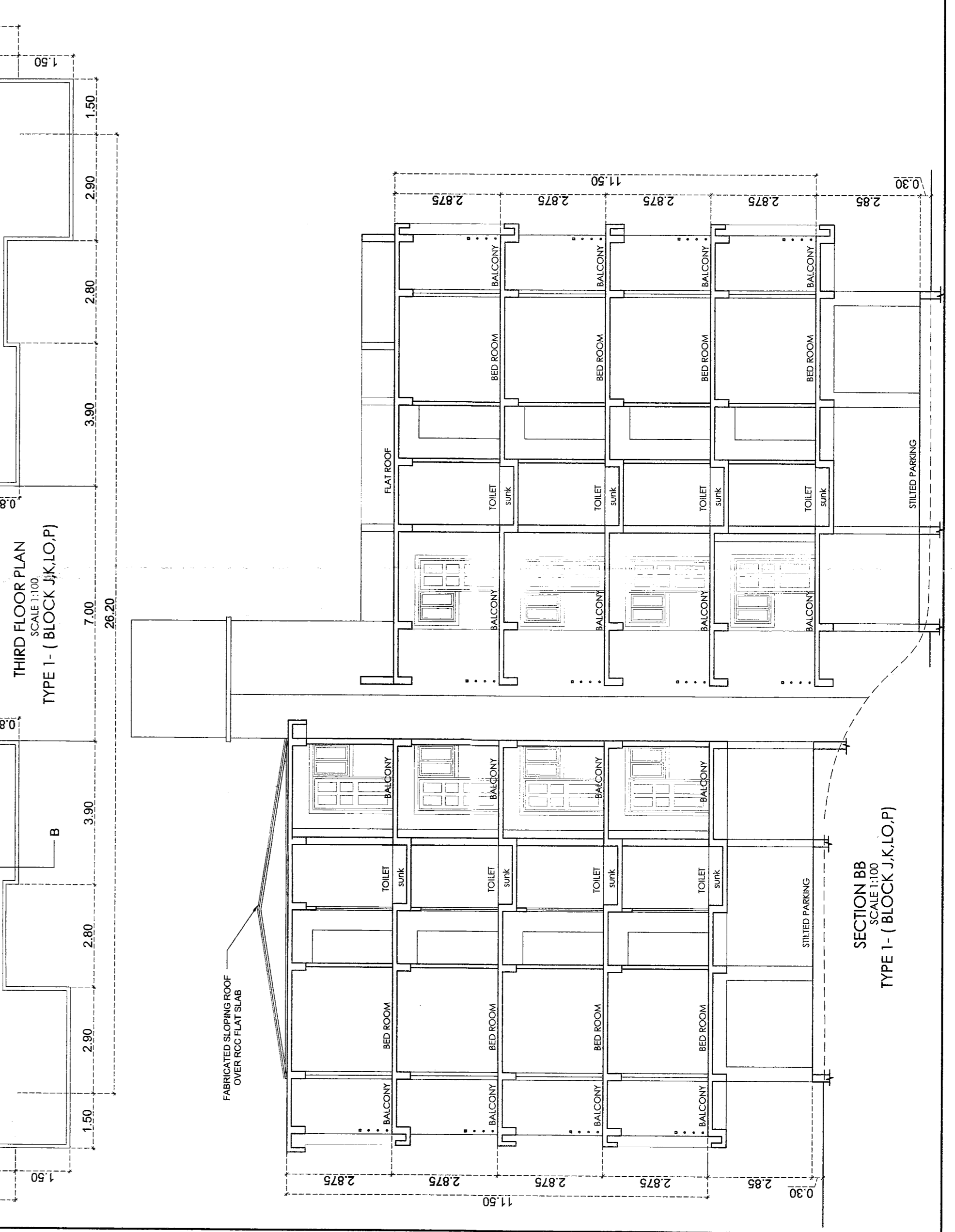
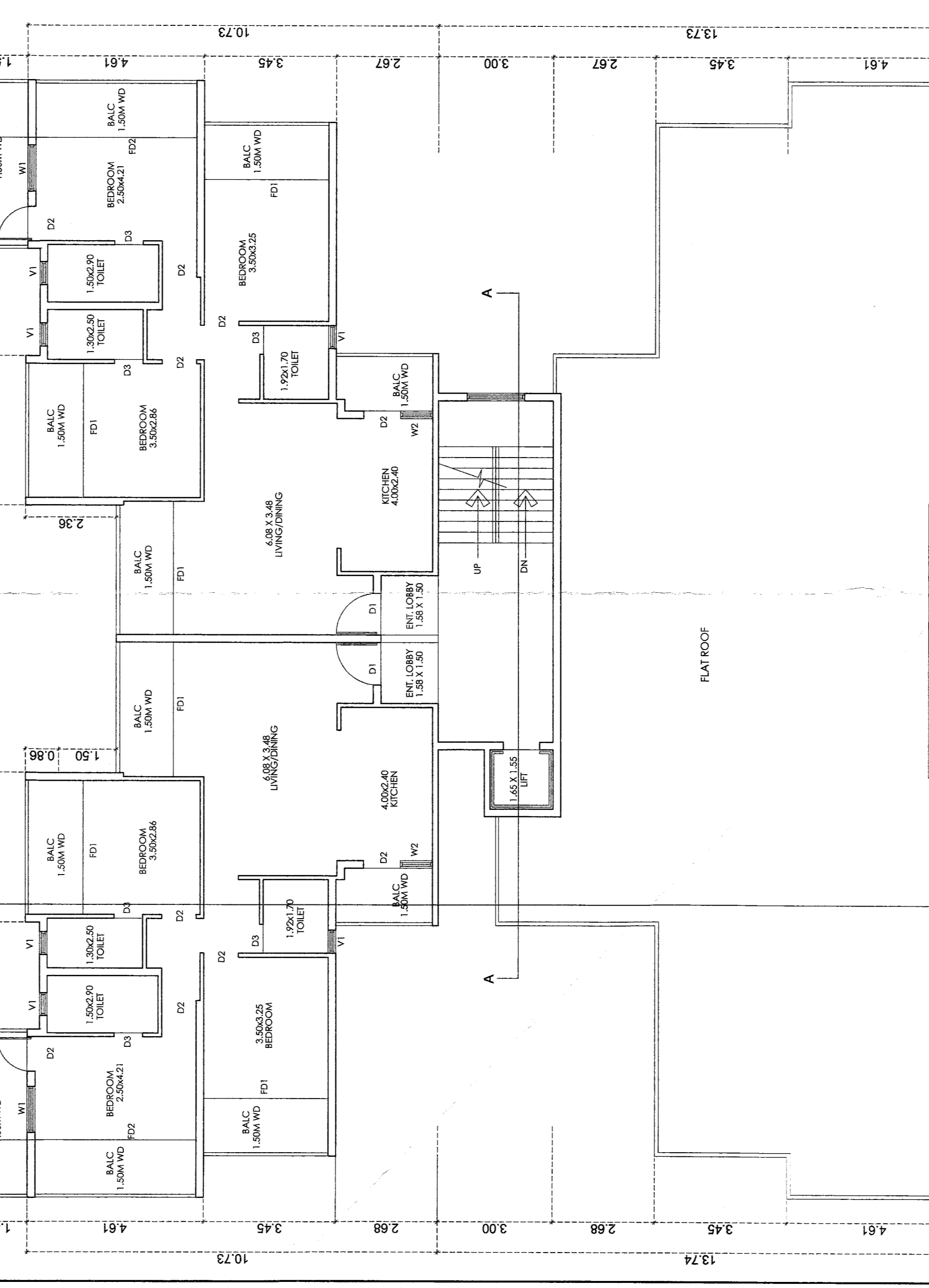
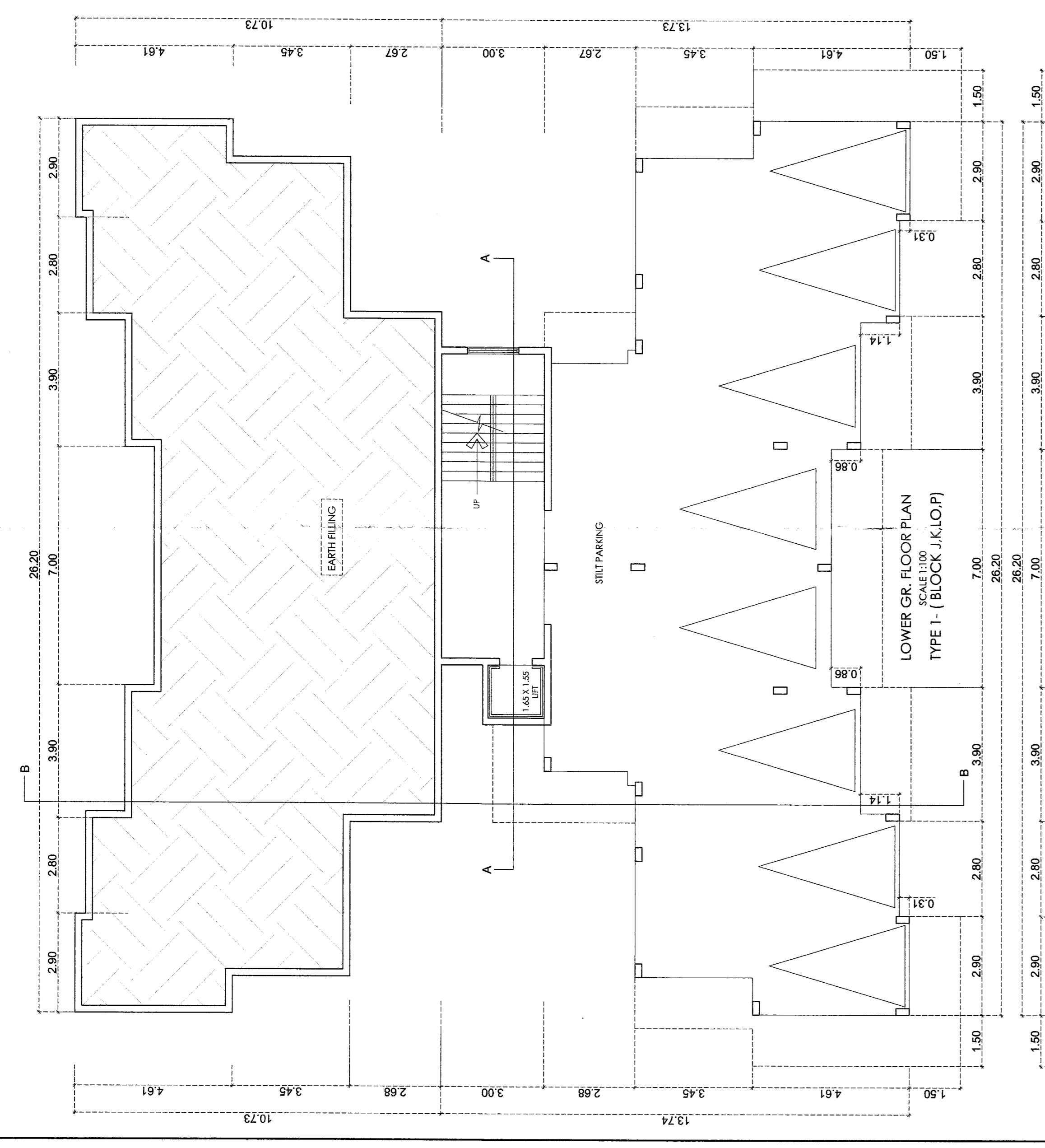
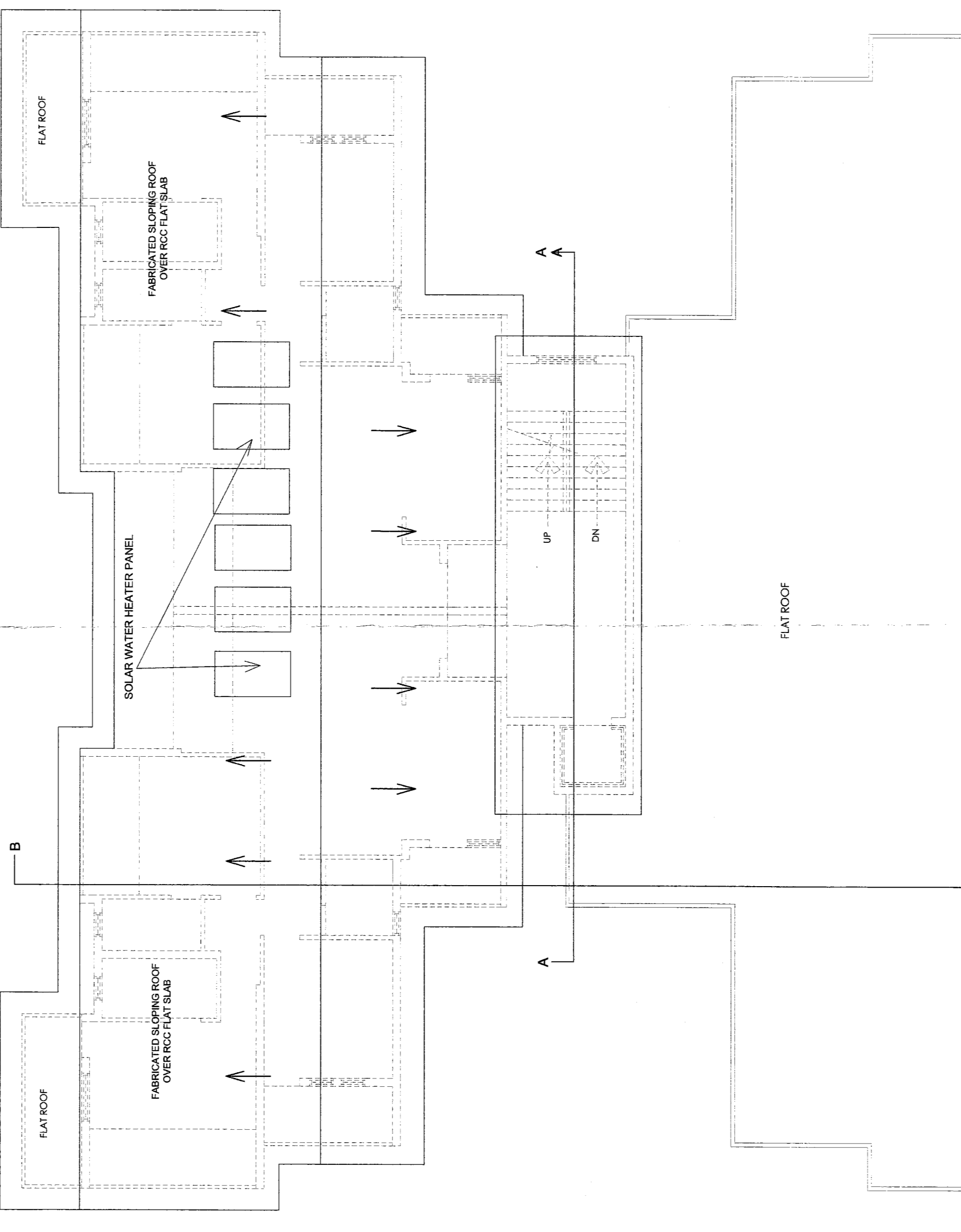
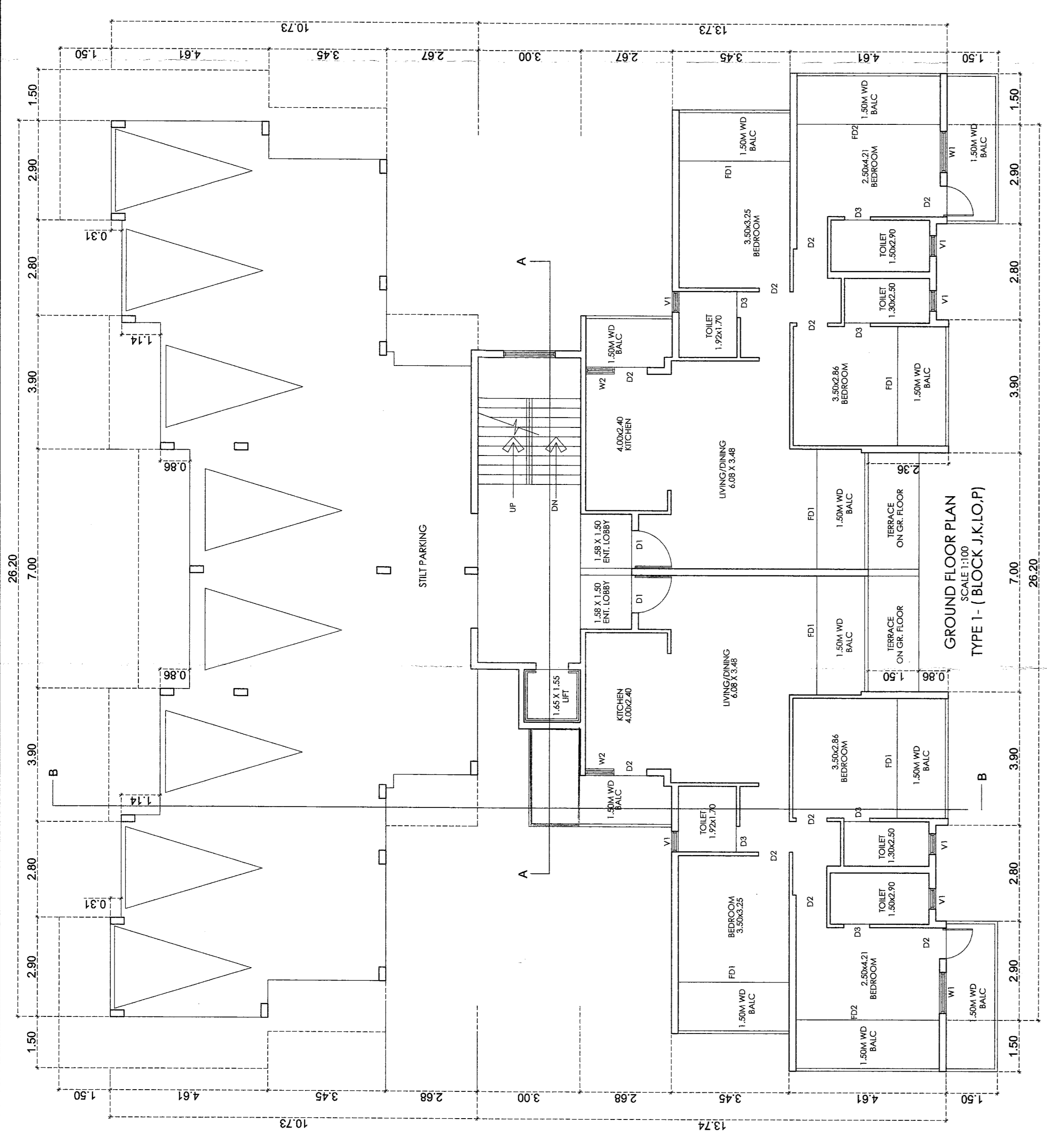
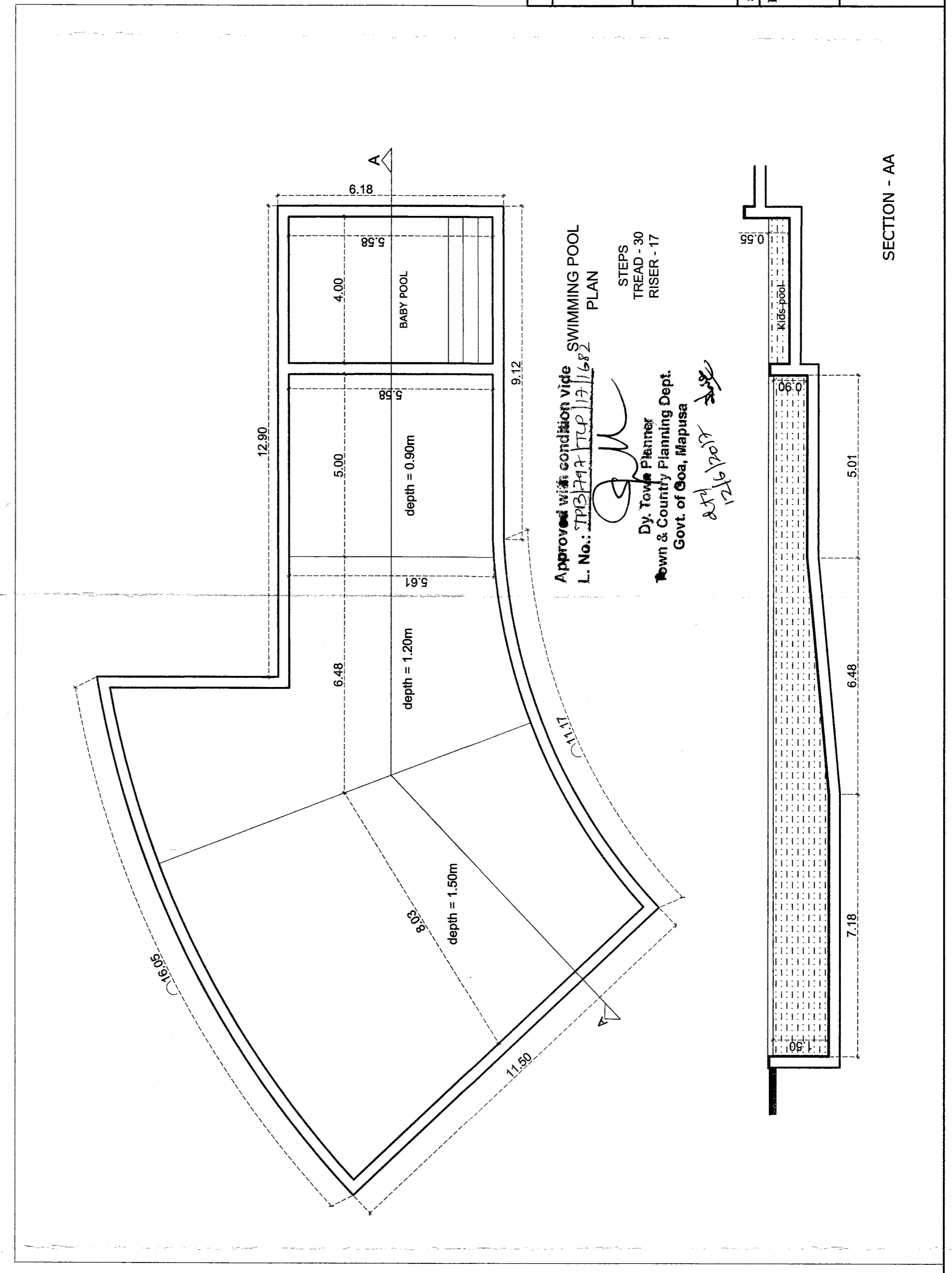
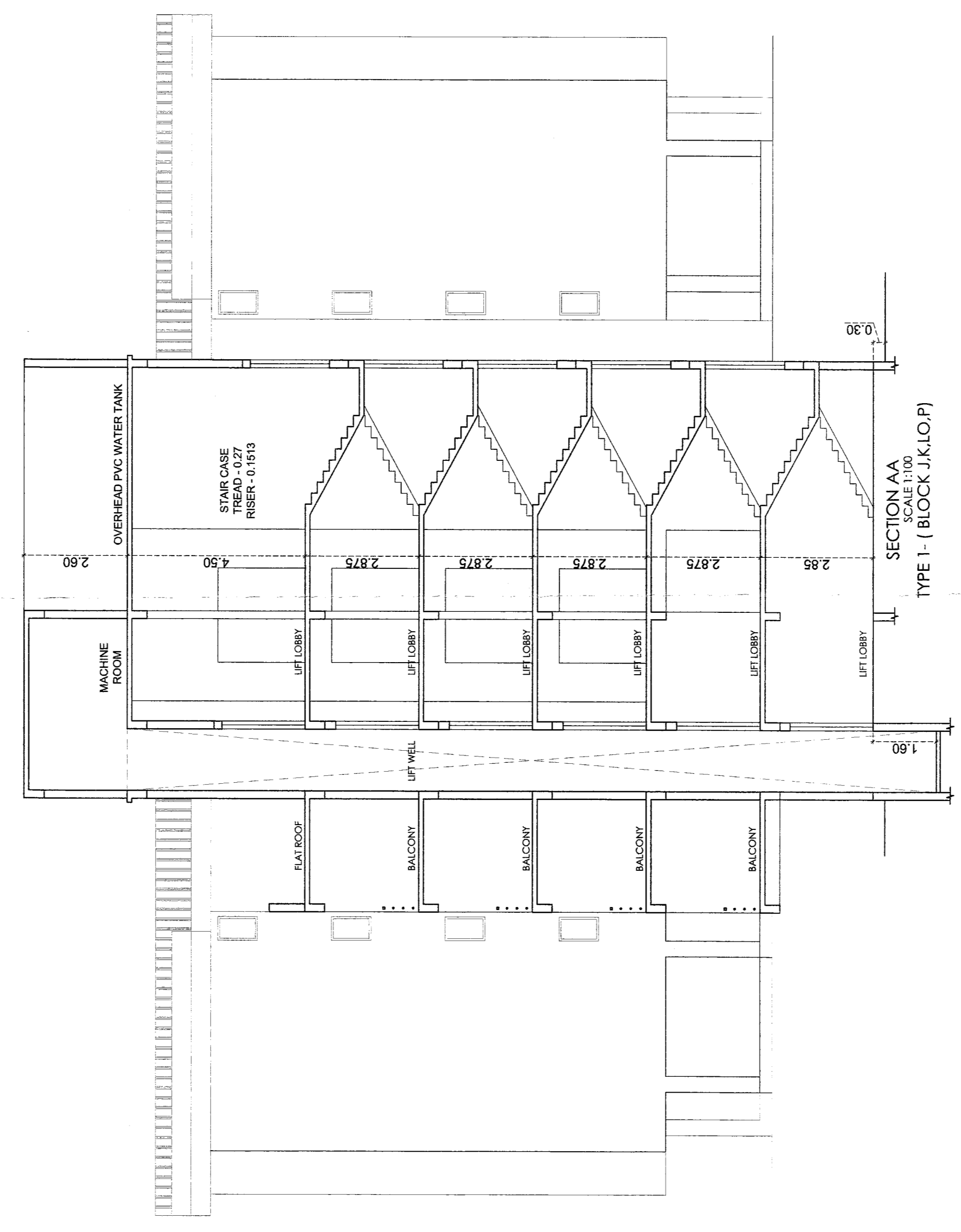
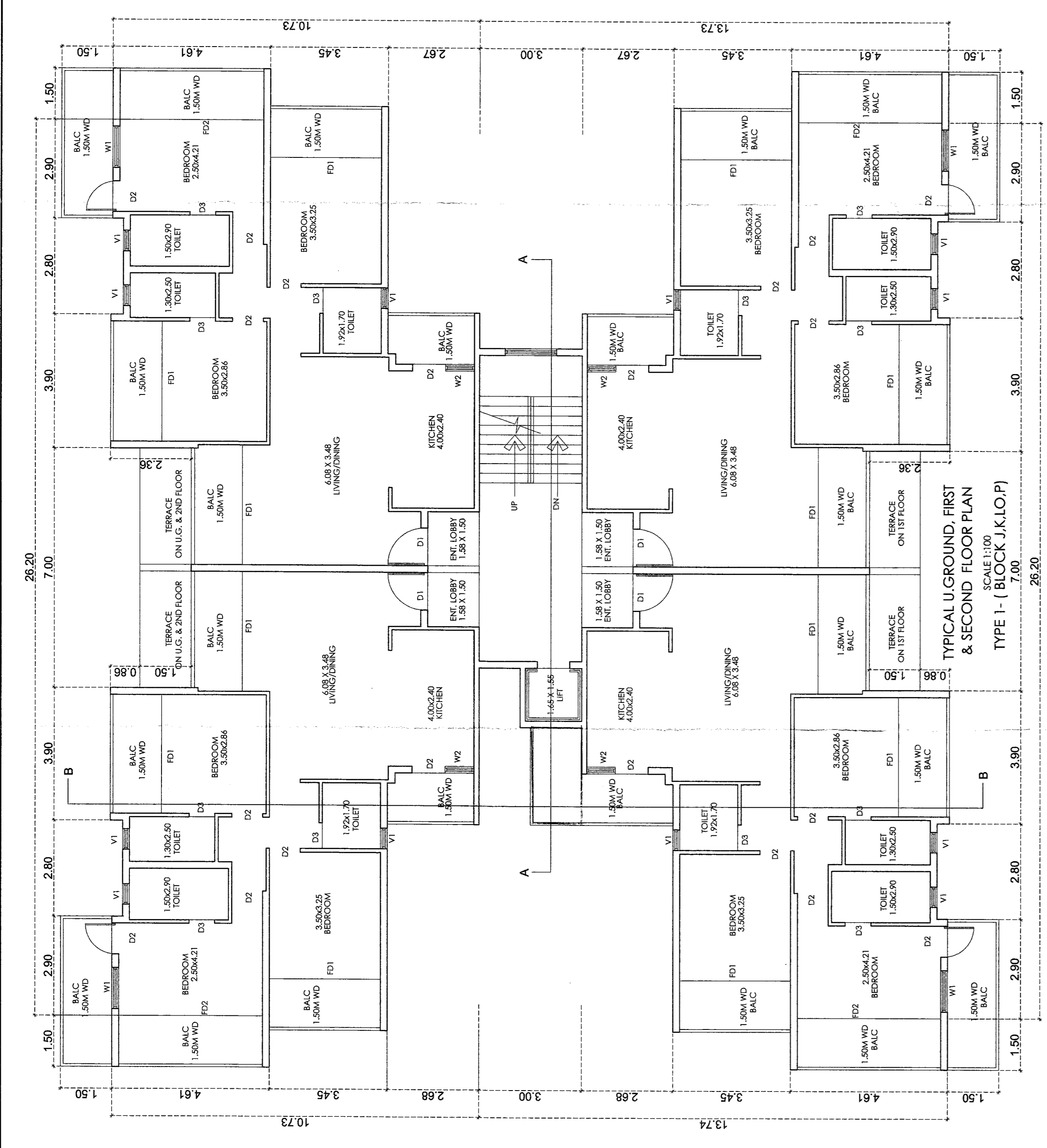
PARKING CALCULATIONS				
TYPE	NOS.	AREA IN SQ.M.	CAR PARK REQUIRED	CAR PARK PROVIDED
A-B-C-D-E-F G-H-I	2 BEDROOM	144	144	148
J,K,L,O,P, M,N,W,X,Y 				

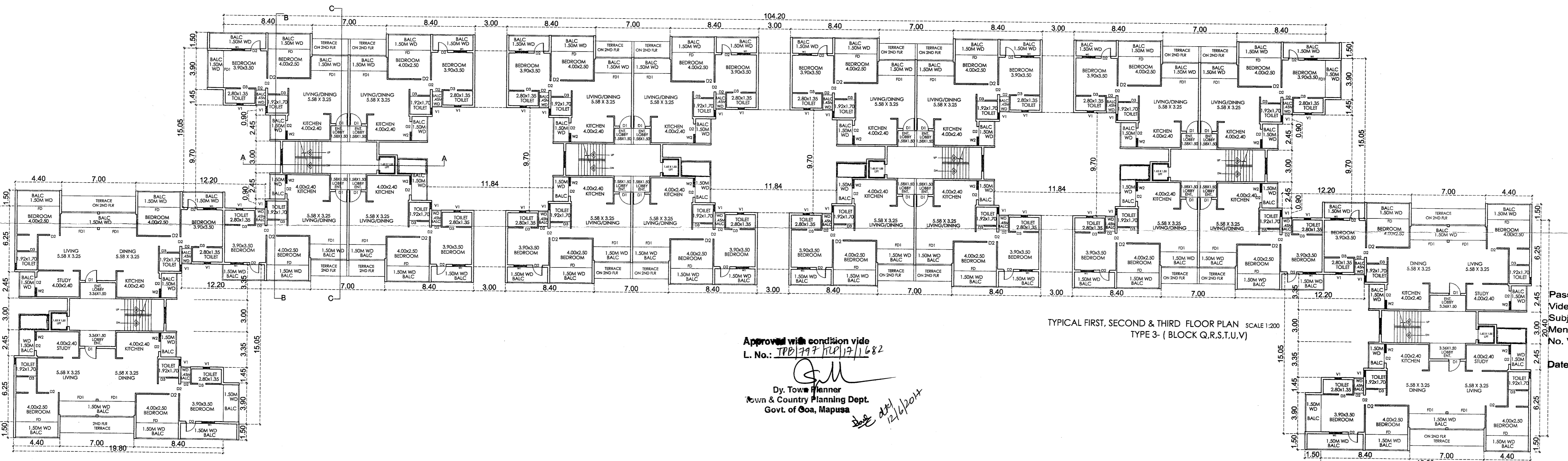
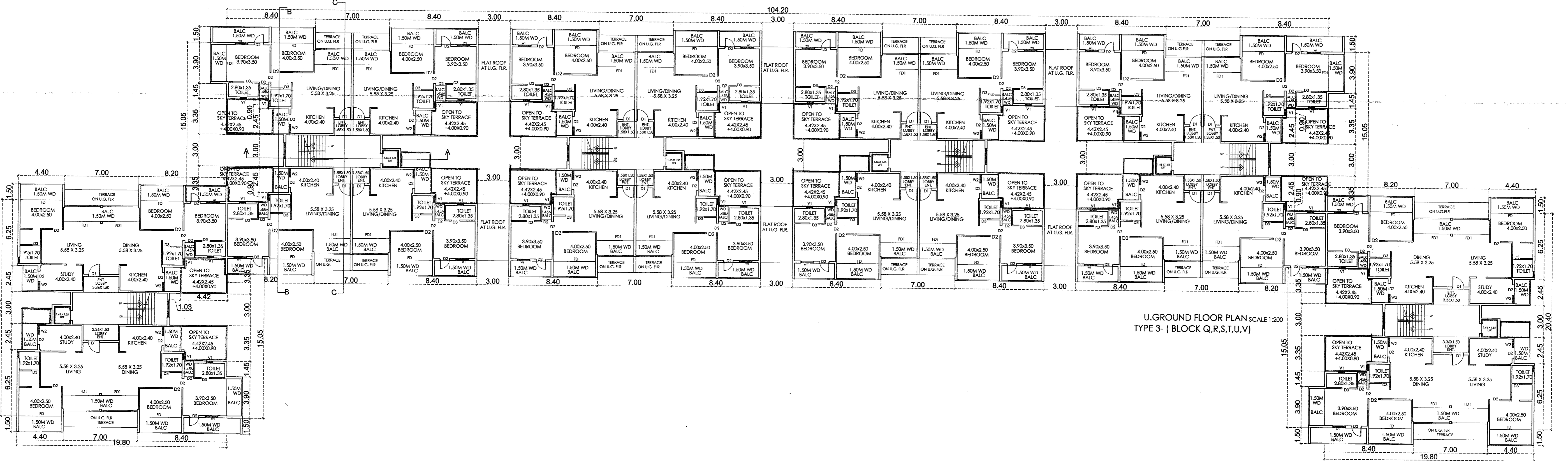
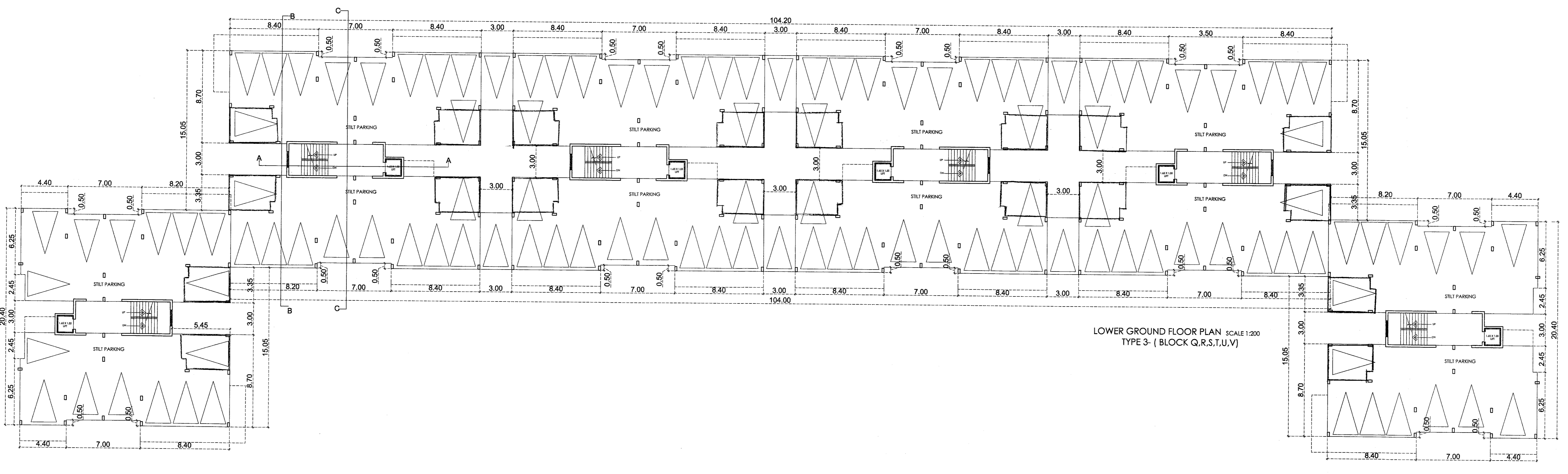


Passed and Approved
 Vide Res. No. 1111/16/2017
 Subject to the Conditions
 Mentioned on the Permits
 No. WPS/2017/1111
 Dated: 20/11/2017
 Secretary
 V. P. Sooran

SCHEDULE FOR DOORS & WINDOWS	
TYPE	SIZE
D1	1000x2100
D2	800x2100
D3	600x2100
D4	400x2100
D5	200x2100
W1	1000x2100
W2	800x2100
W3	600x2100
W4	400x2100
W5	200x2100

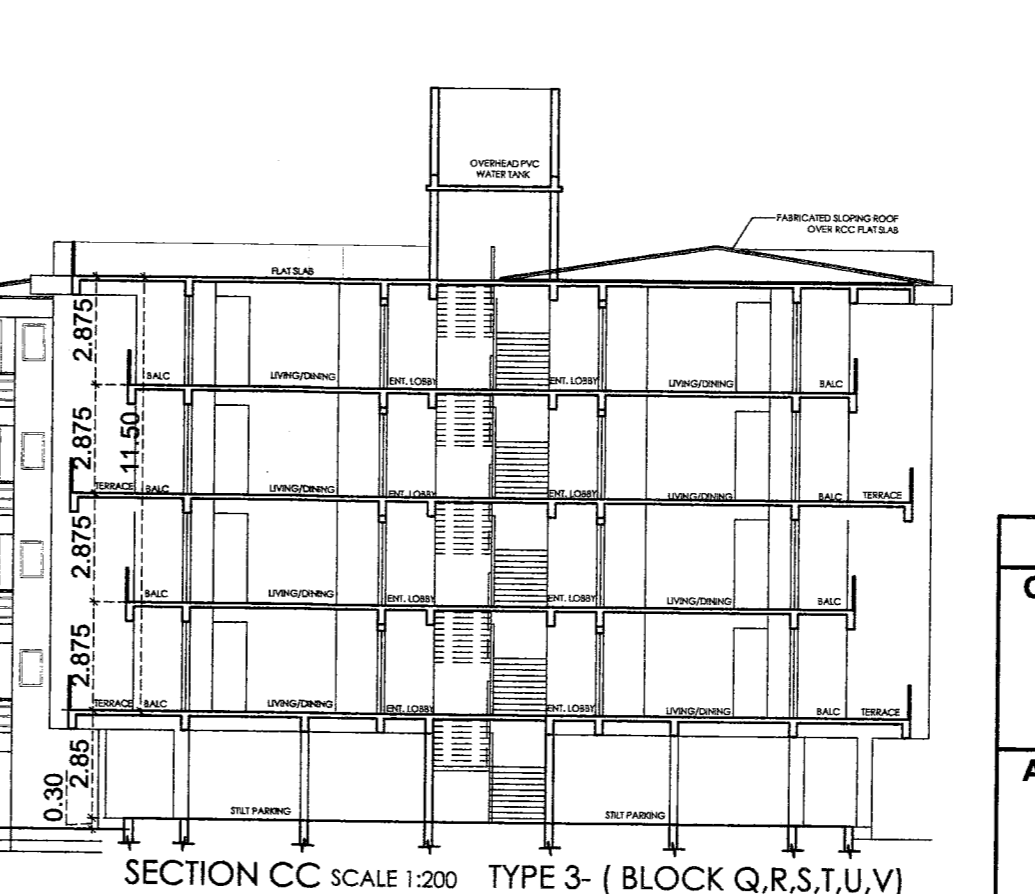
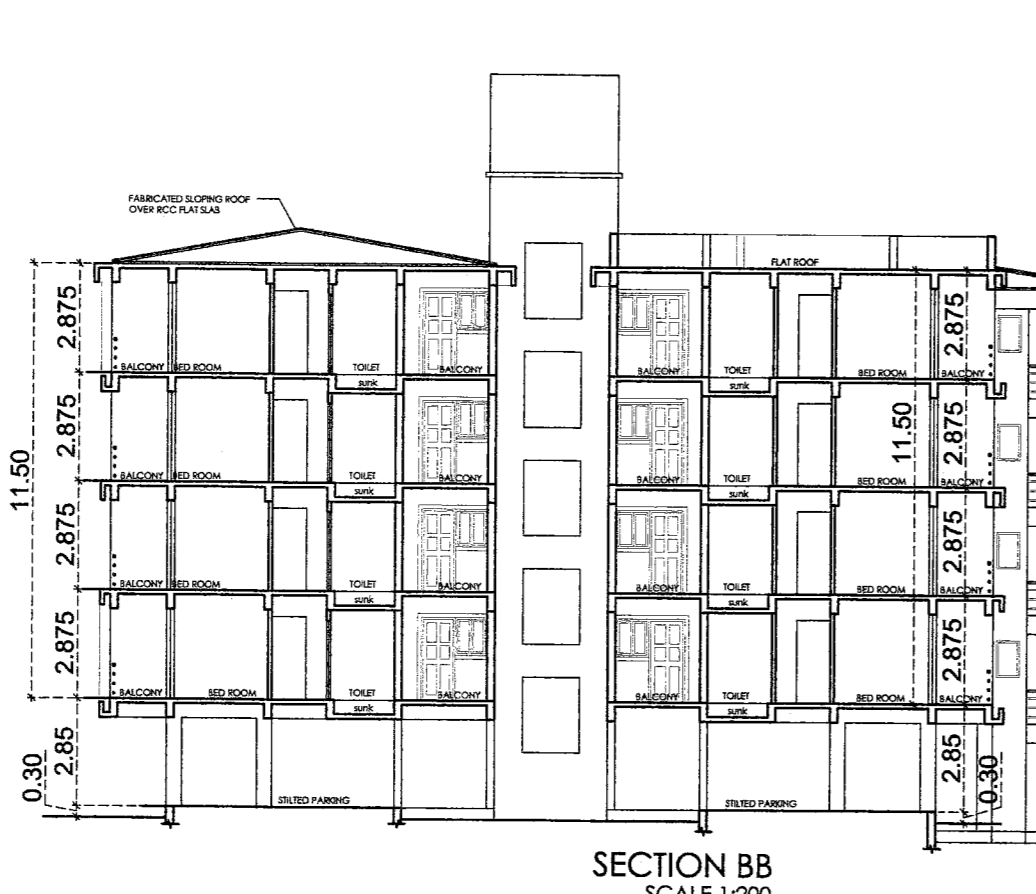
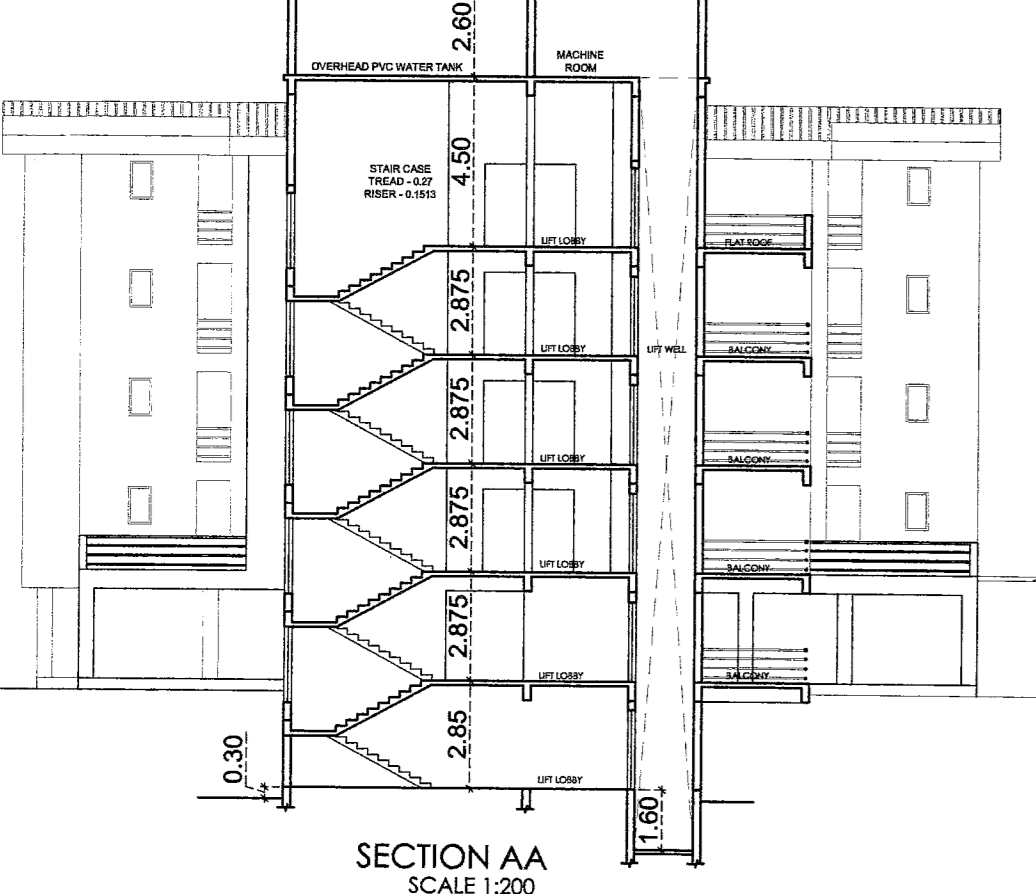
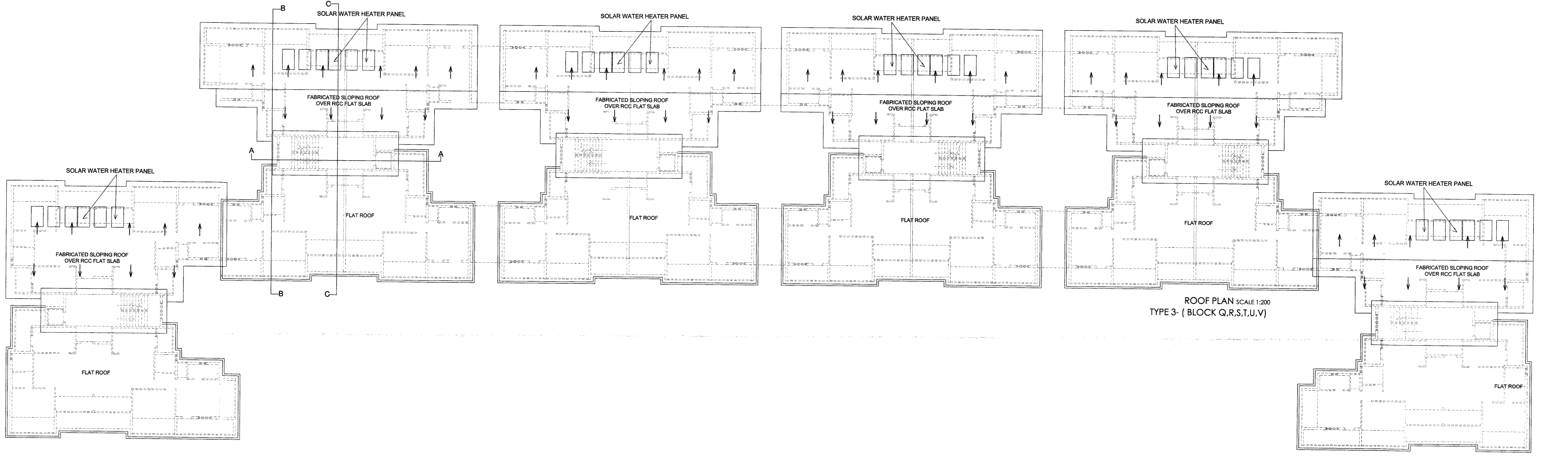
OWNER
 MR. MICHAEL PRINCE DE ANDRADE AND OTHERS
 ARCHITECT
 MR. SIDDHARTH NAIR
 281-A, MATIAS PLAZA
 BEHIND PAKSALUWA, CLUB HOUSE ON PLOT
 BEHIND PAKSALUWA, VILLAGE, BARAZHALLA, COA.
 Reg. No. 148/0027/2010
 SCALE: 1:100 & 1:500
 SHEET NO. - 07/10
 REVISION OF SWIMMING POOL, ADDITION OF BALCONY
 TO THE EXISTING BUILDING AT MATIAS PLAZA,
 BEHIND PAKSALUWA, VILLAGE, BARAZHALLA, COA.
 MS UJ 7915
 #201 - A SECOND FLOOR, MATIAS PLAZA
 PANJIM - GOA 403001
 PH. - 91 882 2421850
 www.msp.in





Approved with condition vide
 L. No.: TPB/247/10/2/1282
 Dy. Town Planner
 Town & Country Planning Dept.
 Govt. of Goa, Mapusa

Passed and Approved
 Vide Res. No. 16/1/2017
 Subject to the Conditions
 Mentioned in the Permission
 No. VP/Sc. 716/2017-18
 Dated: 20/6/2017
 Secretary
 V. P. Sooroo



SCHEDULE FOR DOORS & WINDOWS	
TYPE	SIZE
D1	1100x190
D2	800x190
D3	800x190
W1	1200x120
W2	800x120
W3	800x120
W4	2800x120

NOTE: ALL DIMENSION ARE IN CMS. & MTS.

OWNER: MR. MICHAEL PINTO DE ANDRADE AND OTHERS

ARCHITECT: AR. SIDDHARTH D. MAIK

SCALE: 1:100, 1:200 & 1:500

SHEET NO. - 8/10

REVISION OF SWIMMING POOL, ADDITION OF BALCONY & STAIR IN RESIDENTIAL BUILDING & RC/D/REG/14/14/L/M/N/P/R/S/T/U/V/WAY, CLUB HOUSE ON PLOT BEARING SURVEY No 84/1 (PLOT - A) AT SORCIBO VILLAGE, BARDEZ TALUKA - GOA.

M/S ULYSIS

201 - A, SECOND FLOOR, MATHIAS PLAZA, PANJIM - GOA 403001

PH. - 91 832 2421950

e-mail - ulyse@gmail.com