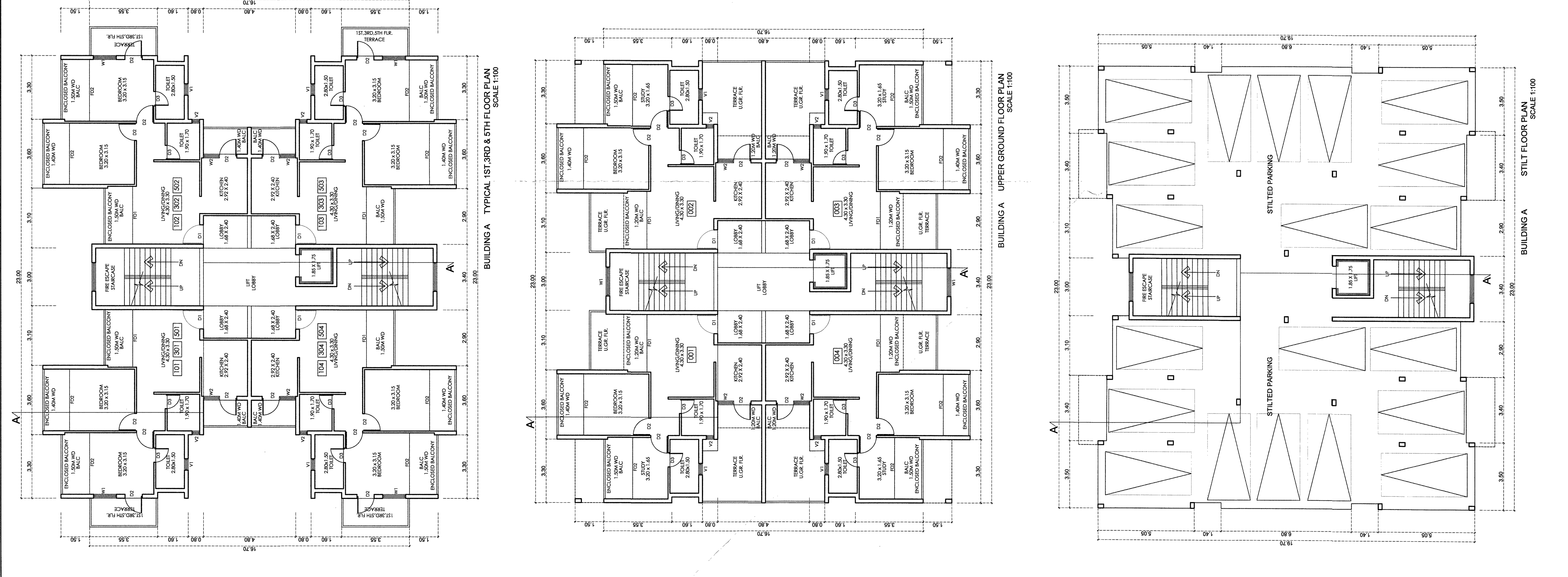
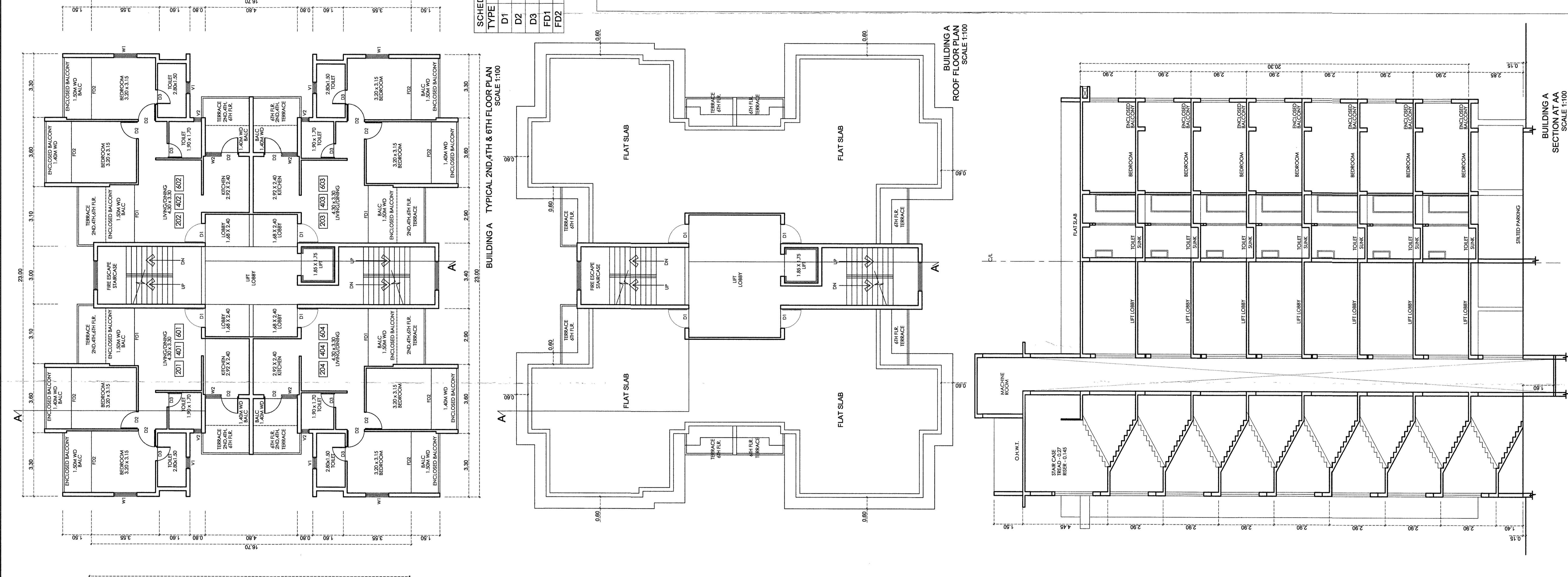
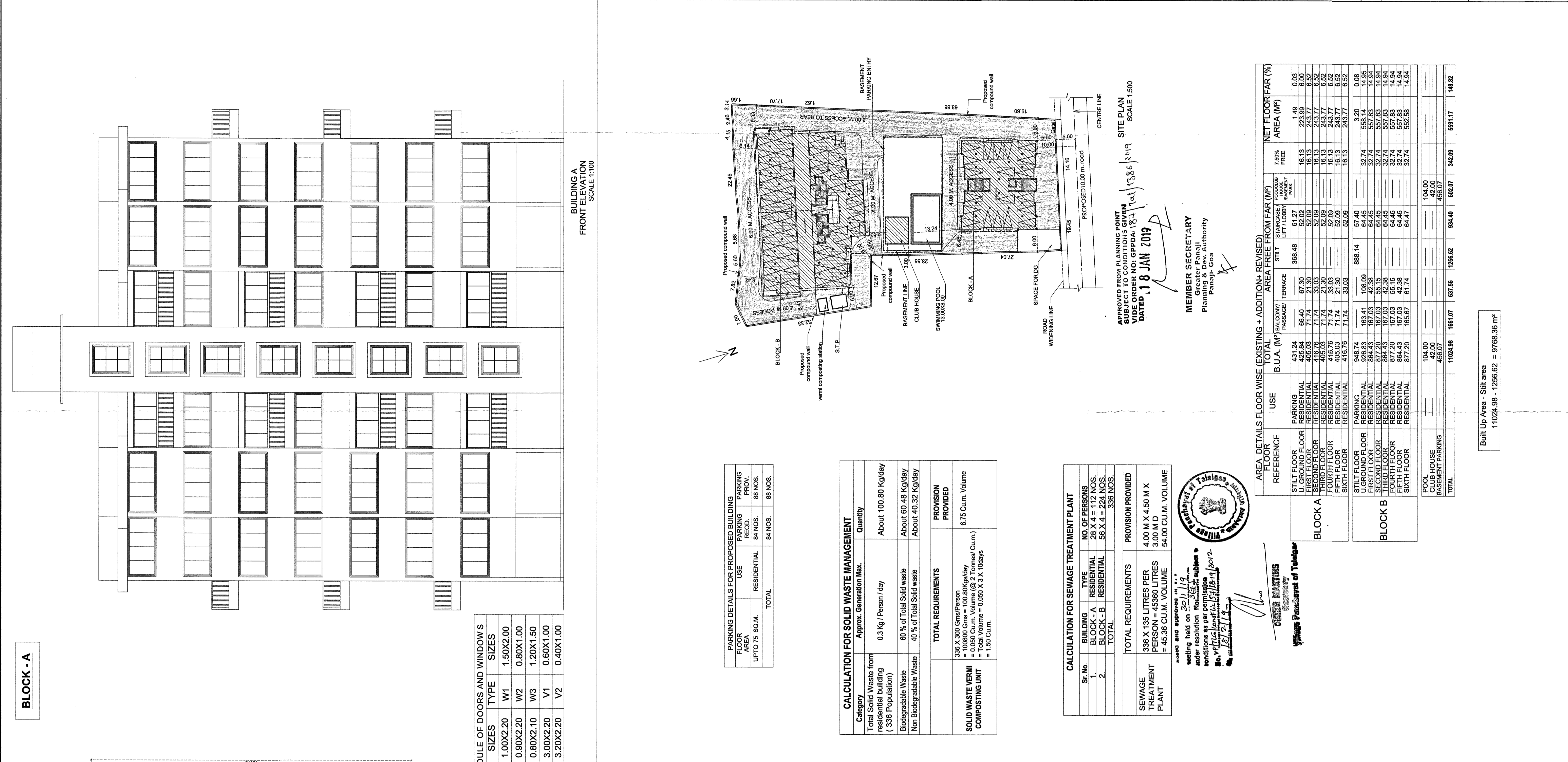


AREA STATEMENT	AREA STATEMENT
PLOT AREA	3732.00 MF
AREA IN R/W	50.35 MF
EFFECTIVE PLOT AREA	3681.65 MF
COVERED AREA	(BLOCK - A)
	(BLOCK - B)
	(CLUB HOUSE)
TOTAL COVERED AREA	1421.98 MF
PERMISSIBLE COVERAGE @ 40%	1472.66 MF
COVERAGE ACHIEVED	38.62 %
BUILT UP AREA	431.24 MF
B.U.A. ON STILL FLOOR	(BLOCK - A)
B.U.A. ON U/GROUND FLOOR	(BLOCK - A)
B.U.A. ON FIRST FLOOR	(BLOCK - A)
B.U.A. ON SECOND FLOOR	(BLOCK - A)
B.U.A. ON THIRD FLOOR	(BLOCK - A)
B.U.A. ON FOURTH FLOOR	(BLOCK - A)
B.U.A. ON FIFTH FLOOR	(BLOCK - A)
B.U.A. ON SIXTH FLOOR	(BLOCK - A)
BUILT UP AREA	948.74 MF
B.U.A. ON U/GROUND FLOOR	(BLOCK - B)
B.U.A. ON FIRST FLOOR	(BLOCK - B)
B.U.A. ON SECOND FLOOR	(BLOCK - B)
B.U.A. ON THIRD FLOOR	(BLOCK - B)
B.U.A. ON FOURTH FLOOR	(BLOCK - B)
B.U.A. ON FIFTH FLOOR	(BLOCK - B)
B.U.A. ON SIXTH FLOOR	(BLOCK - B)
BUILT UP AREA	456.07 MF
B.U.A. ON BASEMENT FLOOR	(BLOCK - A)
CLUB HOUSE	(BLOCK - A)
SWIMMING POOL	(BLOCK - A)
TOTAL BUILT UP AREA	11024.88 MF
FLOOR AREA	(BLOCK - A)
FLOOR AREA ON STILL FLOOR	(BLOCK - A)
FLOOR AREA ON U/GROUND FLOOR	(BLOCK - A)
FLOOR AREA ON FIRST FLOOR	(BLOCK - A)
FLOOR AREA ON SECOND FLOOR	(BLOCK - A)
FLOOR AREA ON THIRD FLOOR	(BLOCK - A)
FLOOR AREA ON FOURTH FLOOR	(BLOCK - A)
FLOOR AREA ON FIFTH FLOOR	(BLOCK - A)
FLOOR AREA ON SIXTH FLOOR	(BLOCK - A)
FLOOR AREA	(BLOCK - B)
FLOOR AREA ON U/GROUND FLOOR	(BLOCK - B)
FLOOR AREA ON FIRST FLOOR	(BLOCK - B)
FLOOR AREA ON SECOND FLOOR	(BLOCK - B)
FLOOR AREA ON THIRD FLOOR	(BLOCK - B)
FLOOR AREA ON FOURTH FLOOR	(BLOCK - B)
FLOOR AREA ON FIFTH FLOOR	(BLOCK - B)
FLOOR AREA ON SIXTH FLOOR	(BLOCK - B)
TOTAL FLOOR AREA	5591.17 MF
F.A.R. PERMISSIBLE @ 150%	5598.00 MF
F.A.R. CONSUMED	149.82 %
LENGTH OF COMPOUND WALL	291.74 RMT.
FREE 7.5% FAR	(5598.00 X 7.5%)
AREA UTILIZED IN U/GROUND	CLUB HOUSE
	32.00 MF
	552.99 MF
	243.77 MF
	243.77 MF
	243.77 MF
	243.77 MF
	243.77 MF
	1688.10 MF
	3.20 MF
	552.99 MF
	552.99 MF
	557.83 MF
	557.83 MF
	557.83 MF
	557.83 MF
	557.83 MF
	557.83 MF
	552.98 MF
	3903.07 MF
TOTAL FLOOR AREA	5591.17 MF
F.A.R. PERMISSIBLE @ 150%	5598.00 MF
F.A.R. CONSUMED	149.82 %
LENGTH OF COMPOUND WALL	291.74 RMT.
FREE 7.5% FAR	(5598.00 X 7.5%)
AREA UTILIZED IN U/GROUND	CLUB HOUSE
	32.00 MF
	552.99 MF
	243.77 MF
	243.77 MF
	243.77 MF
	243.77 MF
	243.77 MF
	1688.10 MF
	3.20 MF
	552.99 MF
	552.99 MF
	557.83 MF
	557.83 MF
	557.83 MF
	557.83 MF
	557.83 MF
	557.83 MF
	552.98 MF
	3903.07 MF



AREA STATEMENT	AREA STATEMENT
PLOT AREA	3732.00 MF
AREA IN R/W	50.35 MF
EFFECTIVE PLOT AREA	3681.65 MF
COVERED AREA	(BLOCK - A)
	(BLOCK - B)
	(CLUB HOUSE)
TOTAL COVERED AREA	1421.98 MF
PERMISSIBLE COVERAGE @ 40%	1472.66 MF
COVERAGE ACHIEVED	38.62 %
BUILT UP AREA	431.24 MF
B.U.A. ON STILL FLOOR	(BLOCK - A)
B.U.A. ON U/GROUND FLOOR	(BLOCK - A)
B.U.A. ON FIRST FLOOR	(BLOCK - A)
B.U.A. ON SECOND FLOOR	(BLOCK - A)
B.U.A. ON THIRD FLOOR	(BLOCK - A)
B.U.A. ON FOURTH FLOOR	(BLOCK - A)
B.U.A. ON FIFTH FLOOR	(BLOCK - A)
B.U.A. ON SIXTH FLOOR	(BLOCK - A)
BUILT UP AREA	948.74 MF
B.U.A. ON U/GROUND FLOOR	(BLOCK - B)
B.U.A. ON FIRST FLOOR	(BLOCK - B)
B.U.A. ON SECOND FLOOR	(BLOCK - B)
B.U.A. ON THIRD FLOOR	(BLOCK - B)
B.U.A. ON FOURTH FLOOR	(BLOCK - B)
B.U.A. ON FIFTH FLOOR	(BLOCK - B)
B.U.A. ON SIXTH FLOOR	(BLOCK - B)
BUILT UP AREA	456.07 MF
B.U.A. ON BASEMENT FLOOR	(BLOCK - A)
CLUB HOUSE	(BLOCK - A)
SWIMMING POOL	(BLOCK - A)
TOTAL BUILT UP AREA	11024.88 MF
FLOOR AREA	(BLOCK - A)
FLOOR AREA ON STILL FLOOR	(BLOCK - A)
FLOOR AREA ON U/GROUND FLOOR	(BLOCK - A)
FLOOR AREA ON FIRST FLOOR	(BLOCK - A)
FLOOR AREA ON SECOND FLOOR	(BLOCK - A)
FLOOR AREA ON THIRD FLOOR	(BLOCK - A)
FLOOR AREA ON FOURTH FLOOR	(BLOCK - A)
FLOOR AREA ON FIFTH FLOOR	(BLOCK - A)
FLOOR AREA ON SIXTH FLOOR	(BLOCK - A)
TOTAL FLOOR AREA	5591.17 MF
F.A.R. PERMISSIBLE @ 150%	5598.00 MF
F.A.R. CONSUMED	149.82 %
LENGTH OF COMPOUND WALL	291.74 RMT.
FREE 7.5% FAR	(5598.00 X 7.5%)
AREA UTILIZED IN U/GROUND	CLUB HOUSE
	32.00 MF
	552.99 MF
	243.77 MF
	243.77 MF
	243.77 MF
	243.77 MF
	243.77 MF
	1688.10 MF
	3.20 MF
	552.99 MF
	552.99 MF
	557.83 MF
	557.83 MF
	557.83 MF
	557.83 MF
	557.83 MF
	557.83 MF
	552.98 MF
	3903.07 MF

ARCHITECT
DATE 22-12-2018

OWNER
 Urban Health Centre Panaji

MEMBER SECRETARY
 Greater Panaji
 Panaji - Goa

APPROVED FOR ELECTRICAL POINT
 SUBJECT TO CONDITION
 STIPULATED IN VIDE LETTER
 No. UHC/DIR/NO/2018/20-21/32/4
 DATED 13 JAN 2019

DRG.NO 01/03
 (MS. DEVASHRI NIRMAL LLP)

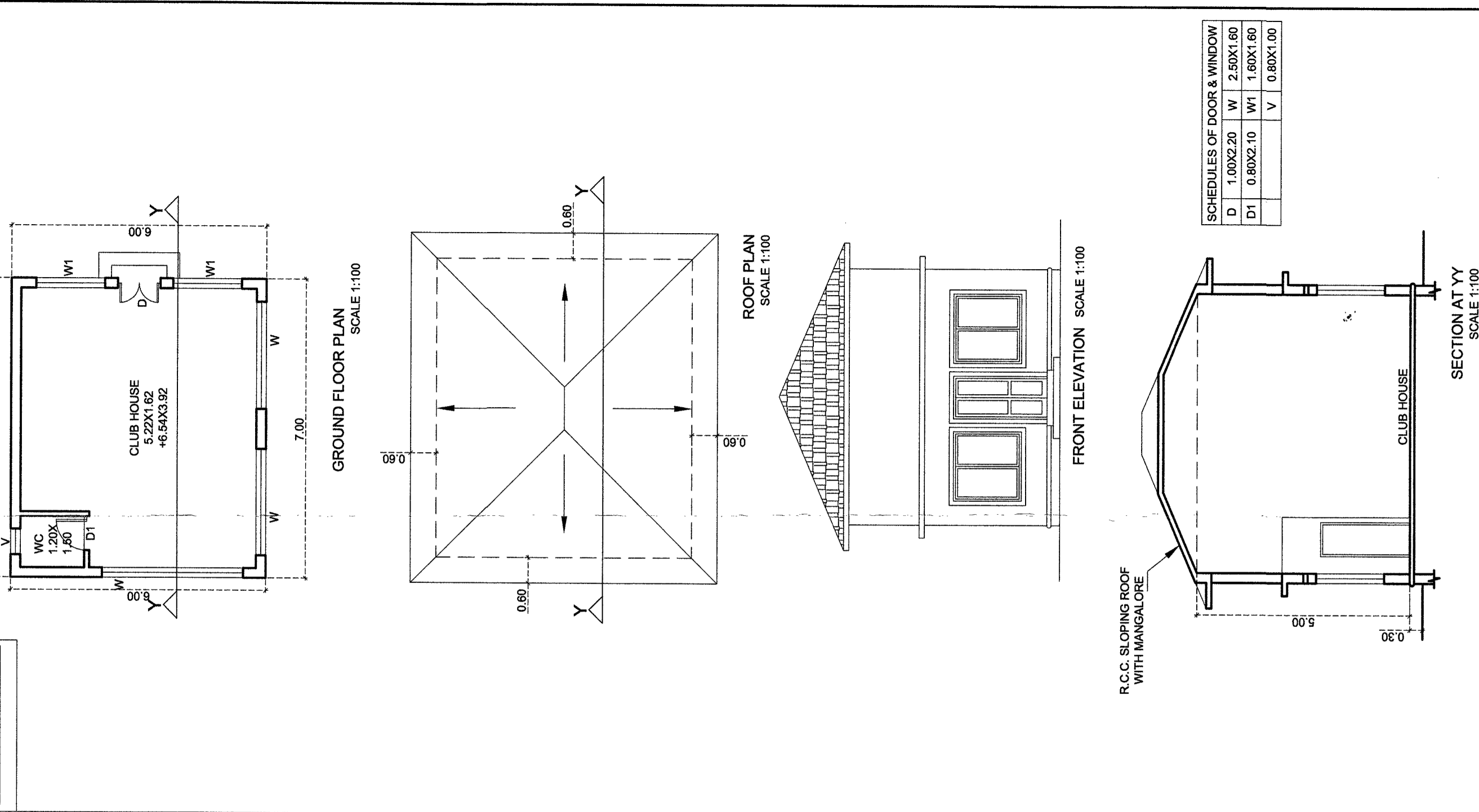
PROPOSED CONSTRUCTION OF RESIDENTIAL BUILDINGS
BLOCK - A - BLOCK - B - COMPOUND WALL CLUB HOUSE &
SWIMMING POOL IN PROPERTY BEARING SURVEY NO.
17215 AT TALEGAO VILLAGE , TISWADI TALUKA, GOA.

MIS ULYSIS
 ARCHITECTURAL INTERIOR & LANDSCAPE CONSULTANTS
 #.201 - A SECOND FLOOR, MATHIAS PLAZA,
 PANJIM - GOA 403001
 PH - 91 832 2421950

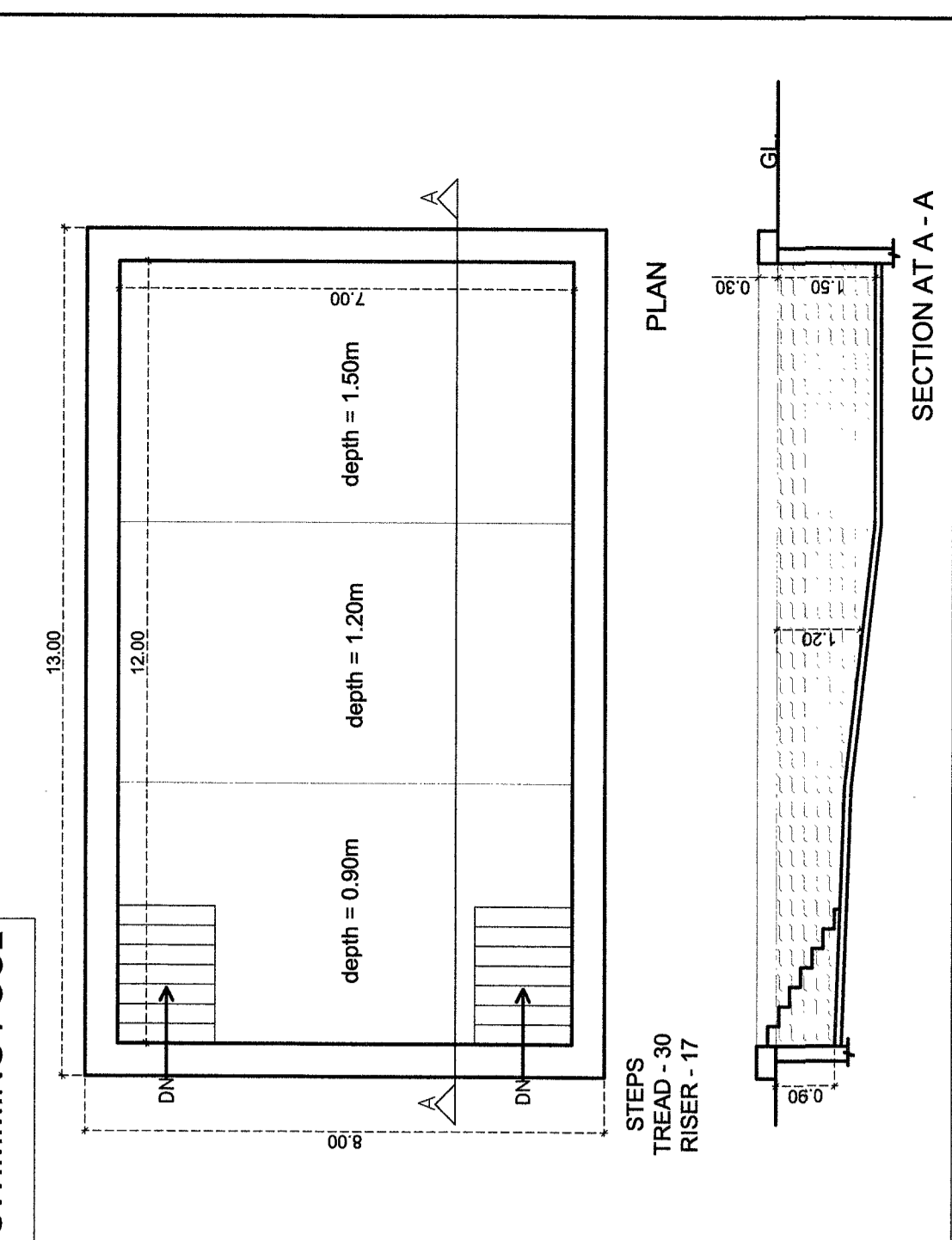
APPROVED FOR ELECTRICAL POINT
 SUBJECT TO CONDITION
 STIPULATED IN VIDE LETTER
 No. UHC/DIR/NO/2018/20-21/32/4
 DATED 13 JAN 2019

Approved by
 MRS. DEVIKUMAR
 Asst. Secy. (Electrical)
 S.D. Talukda, Talukgaon, Goa.

CLUB HOUSE



SWIMMING POOL

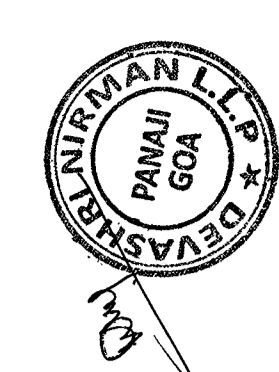


NOTE: ALL DIMENSION ARE IN CMS.&M.TS. DRG. NO 02/03

ARCHITECT

AV. SIDDHARTH D. NAIK
201-A, MATIAS PLAZA
PANJIM - GOA 403001
Ph: 91-9832421950

OWNERS

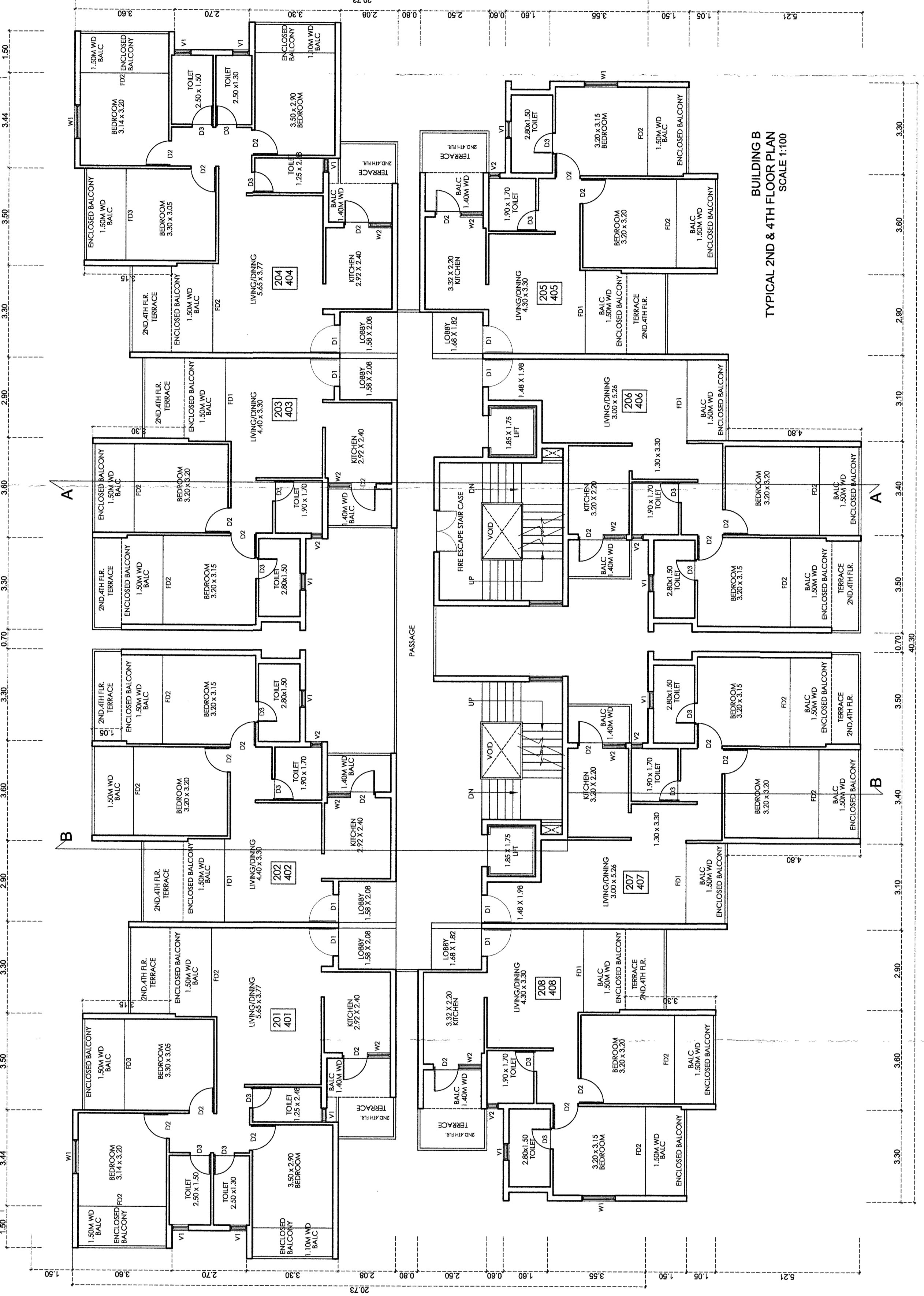


SCALE - 1:100 1:200 & 1:500 DATE 22 - 12 - 2018
(M/S. DEVASHRI NIRMAL LLP)

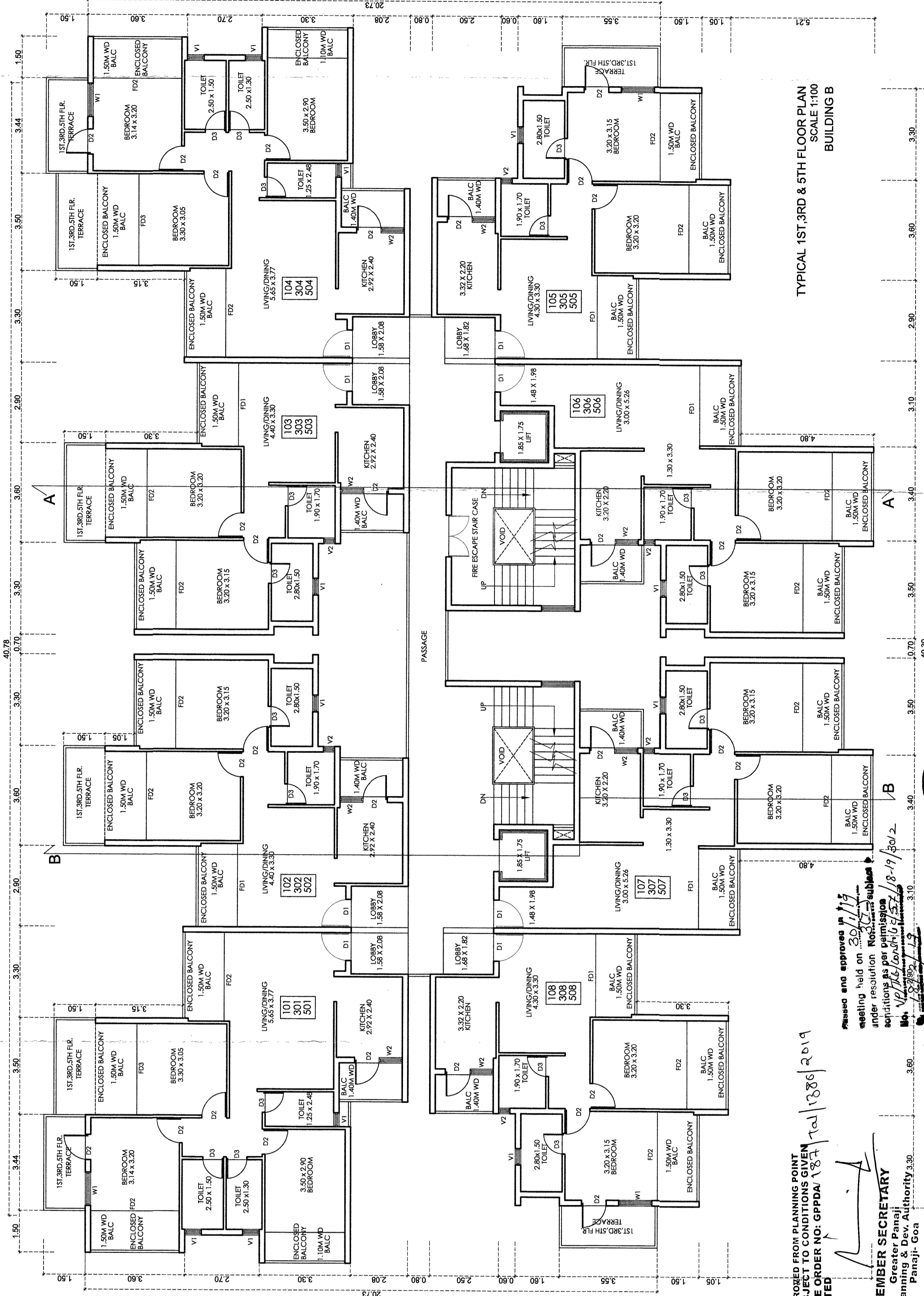
PROPOSED CONSTRUCTION OF RESIDENTIAL BUILDINGS BLOCK - A, BLOCK - B, COMPOUND WALL CLUB HOUSE & SWIMMING POOL IN PROPERTY BEARING SURVEY No. 172/15 AT TALEGAO VILLAGE, TISWADI TALLUKA, GOA.

DRG. No. 1-2/3

M/S ULYSIS
ARCHITECTURAL INTERIOR & LANDSCAPE CONSULTANTS
201 - A SECOND FLOOR, MATIAS PLAZA,
PANJIM - GOA 403001
PH. - 91 832 2421950



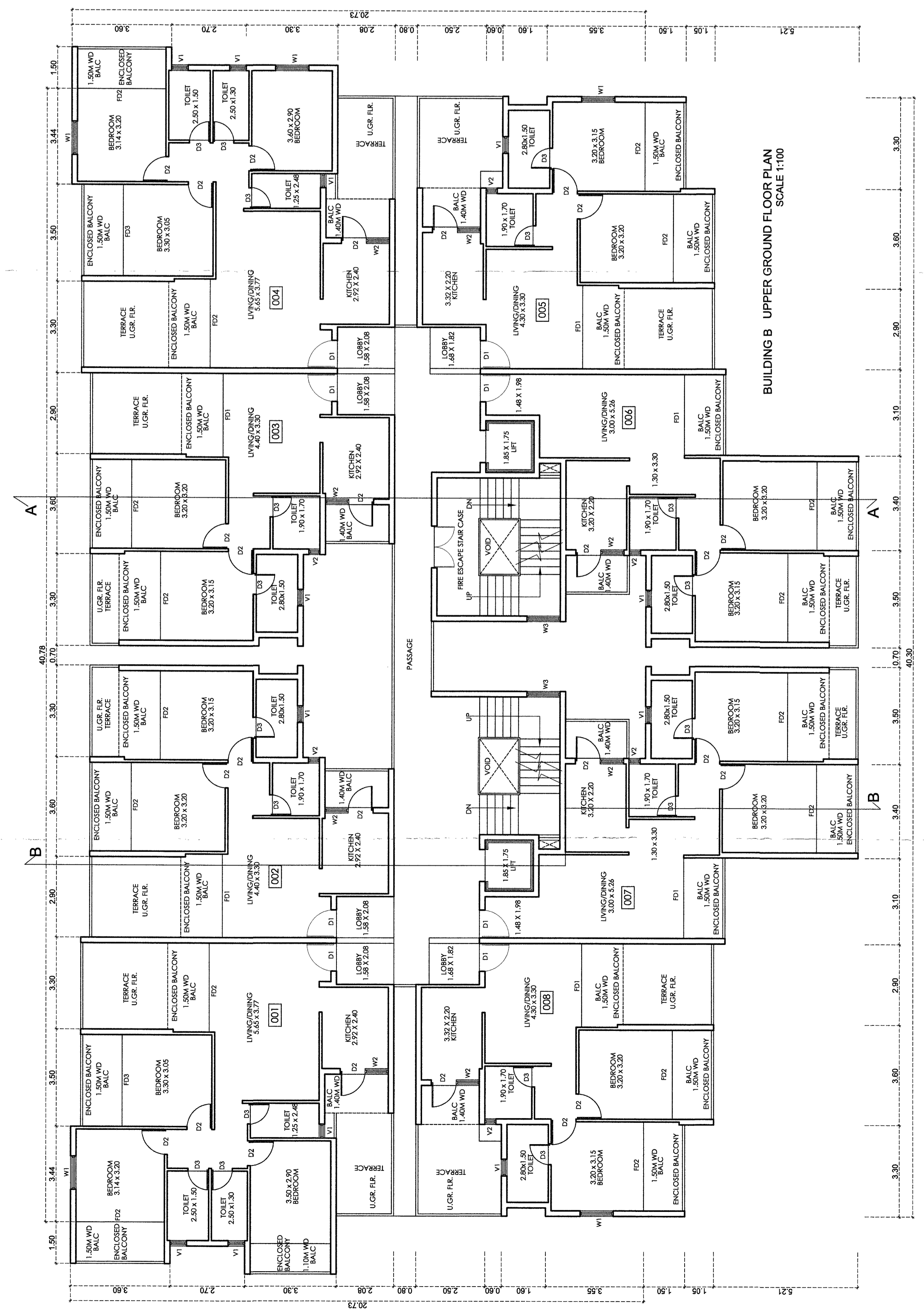
TYPICAL 2ND & 4TH FLOOR PLAN SCALE 1:100



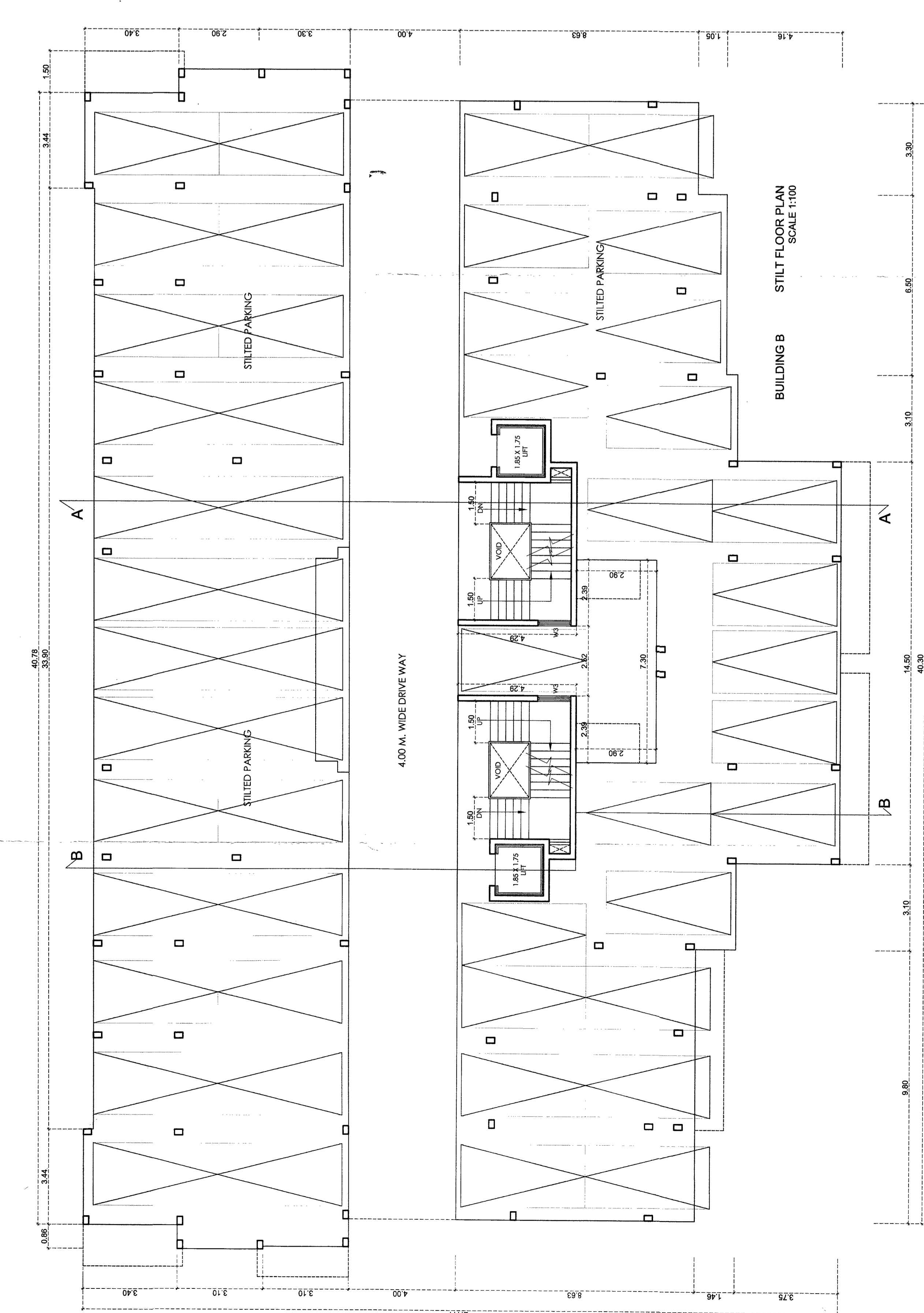
TYPICAL 1ST, 3RD & 5TH FLOOR PLAN SCALE 1:100

SCHEDULE OF DOORS AND WINDOWS

TYPE	SIZES	TYPE	SIZES
D1	1.00X2.20	W1	1.50X2.00
D2	0.90X2.20	W2	0.80X1.00
D3	0.80X2.10	W3	1.20X1.50
FD1	3.00X2.20	V1	0.60X1.00
FD2	3.20X2.20	V2	0.40X1.00



UPPER GROUND FLOOR PLAN SCALE 1:100



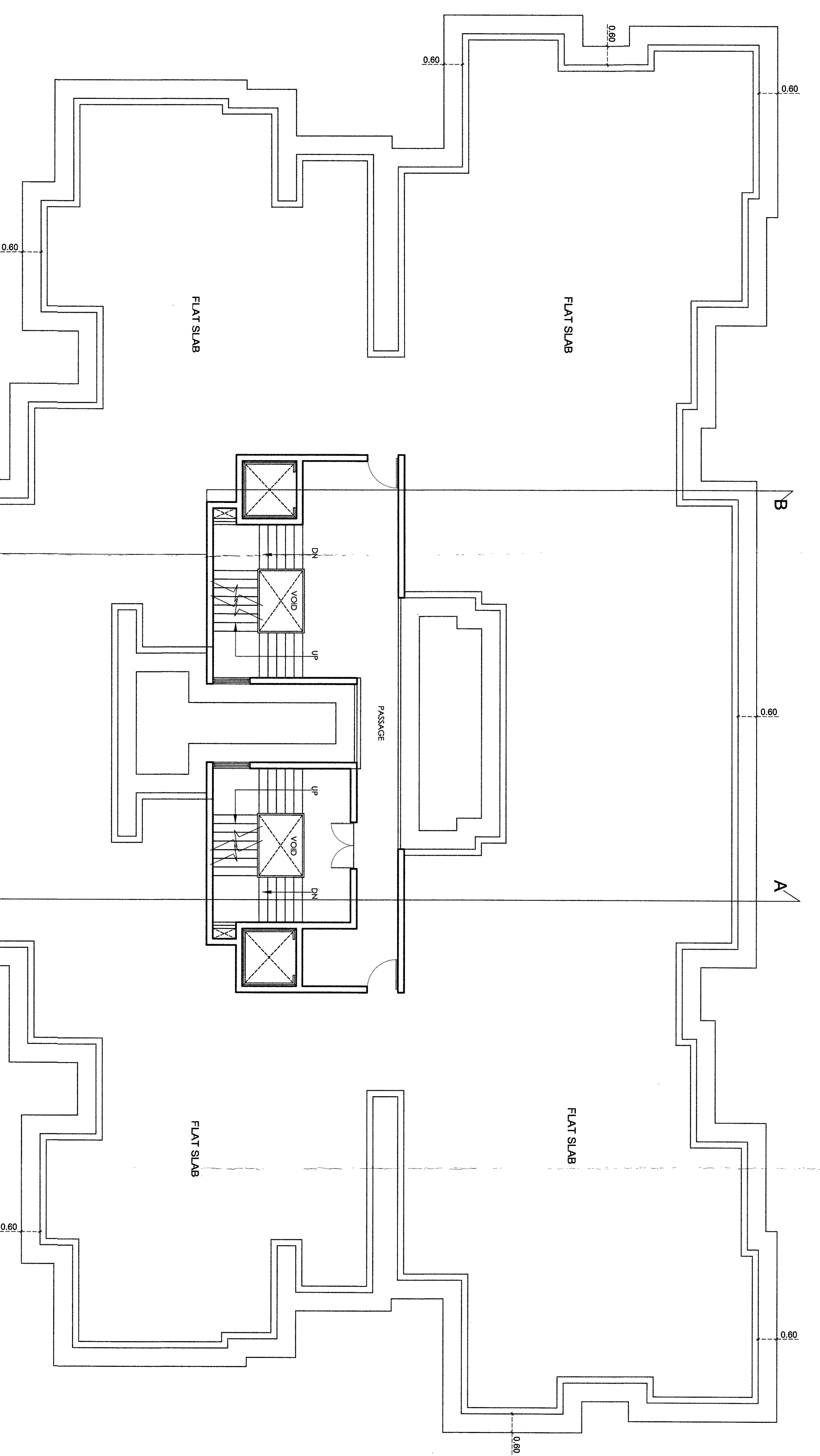
STILL FLOOR PLAN SCALE 1:100

APPROVED FROM PLANNING POINT
DATE: 10/08/2017
VINE ORDER NO. OPDA/VSA/10/08/2017
MEMBER SECRETARY
Greater Panaji
Planning Point Authority



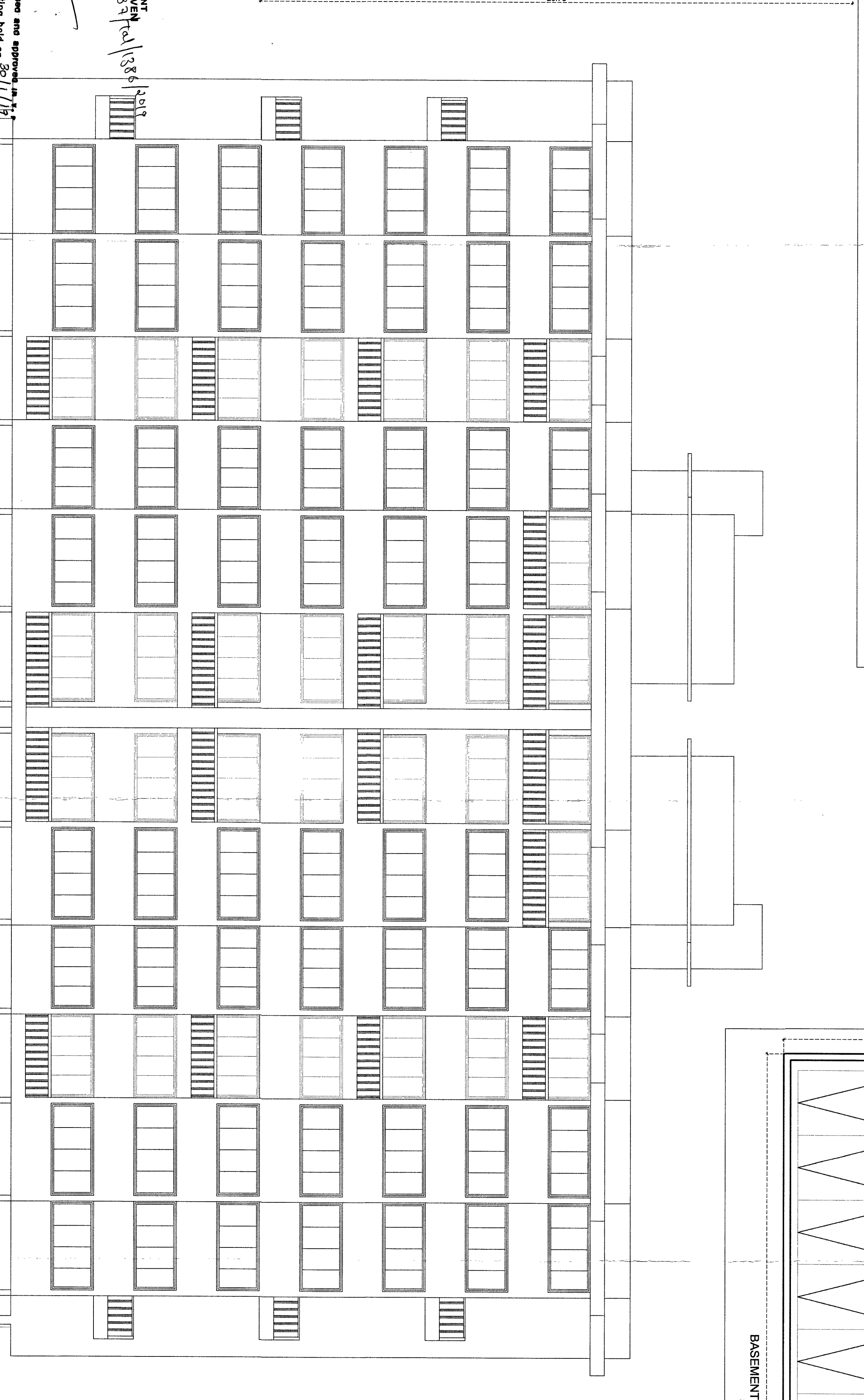
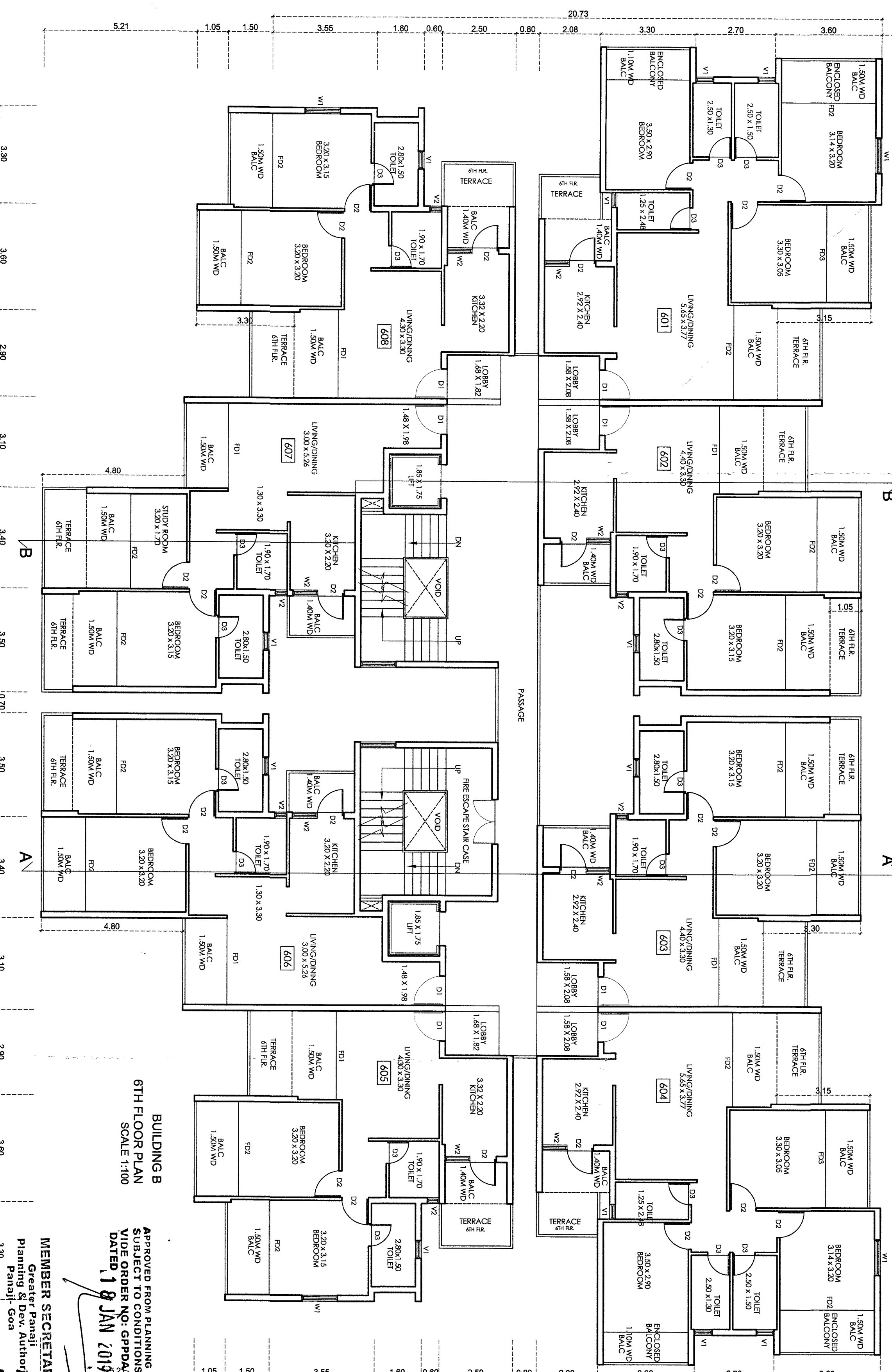
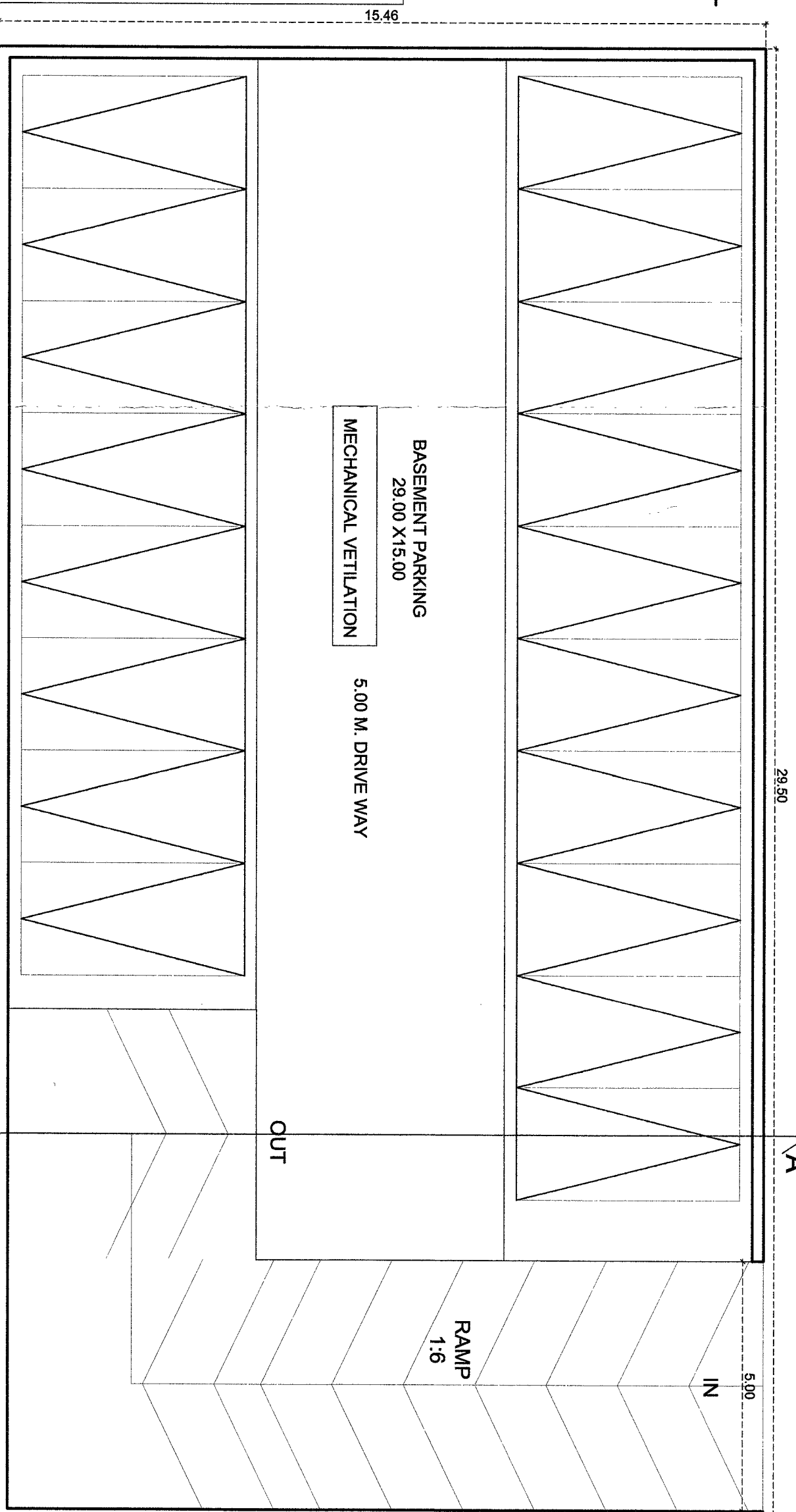
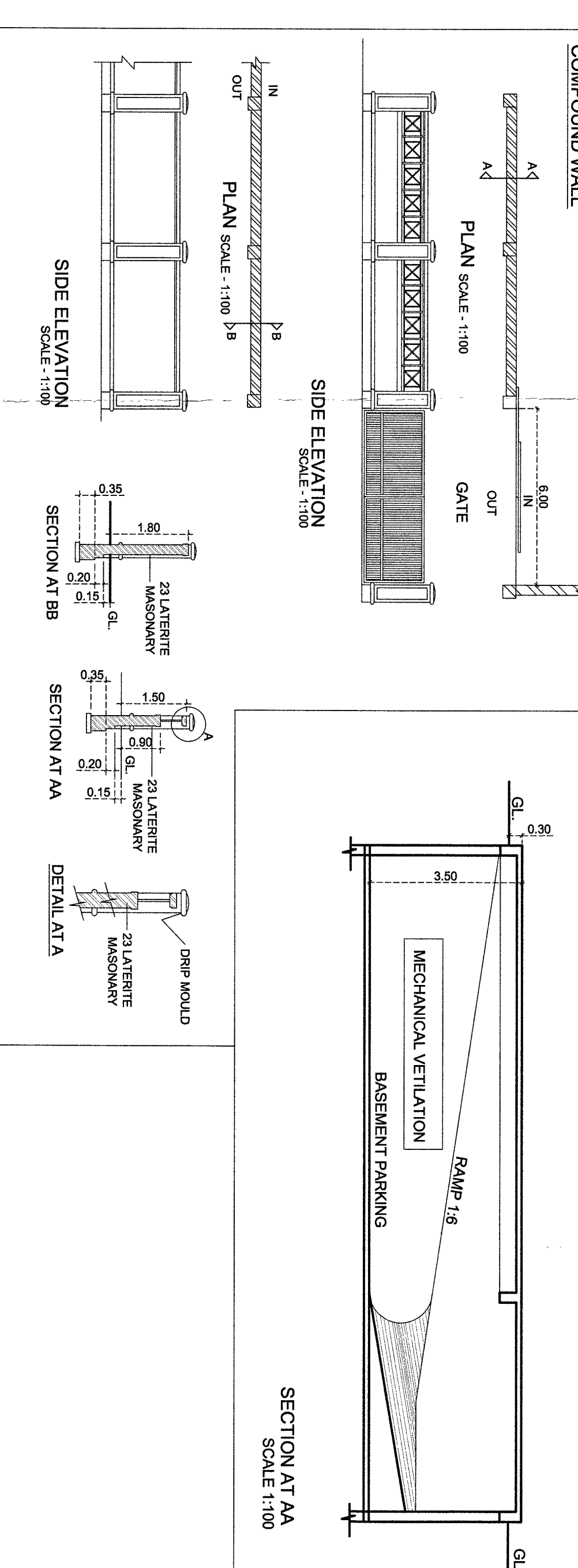
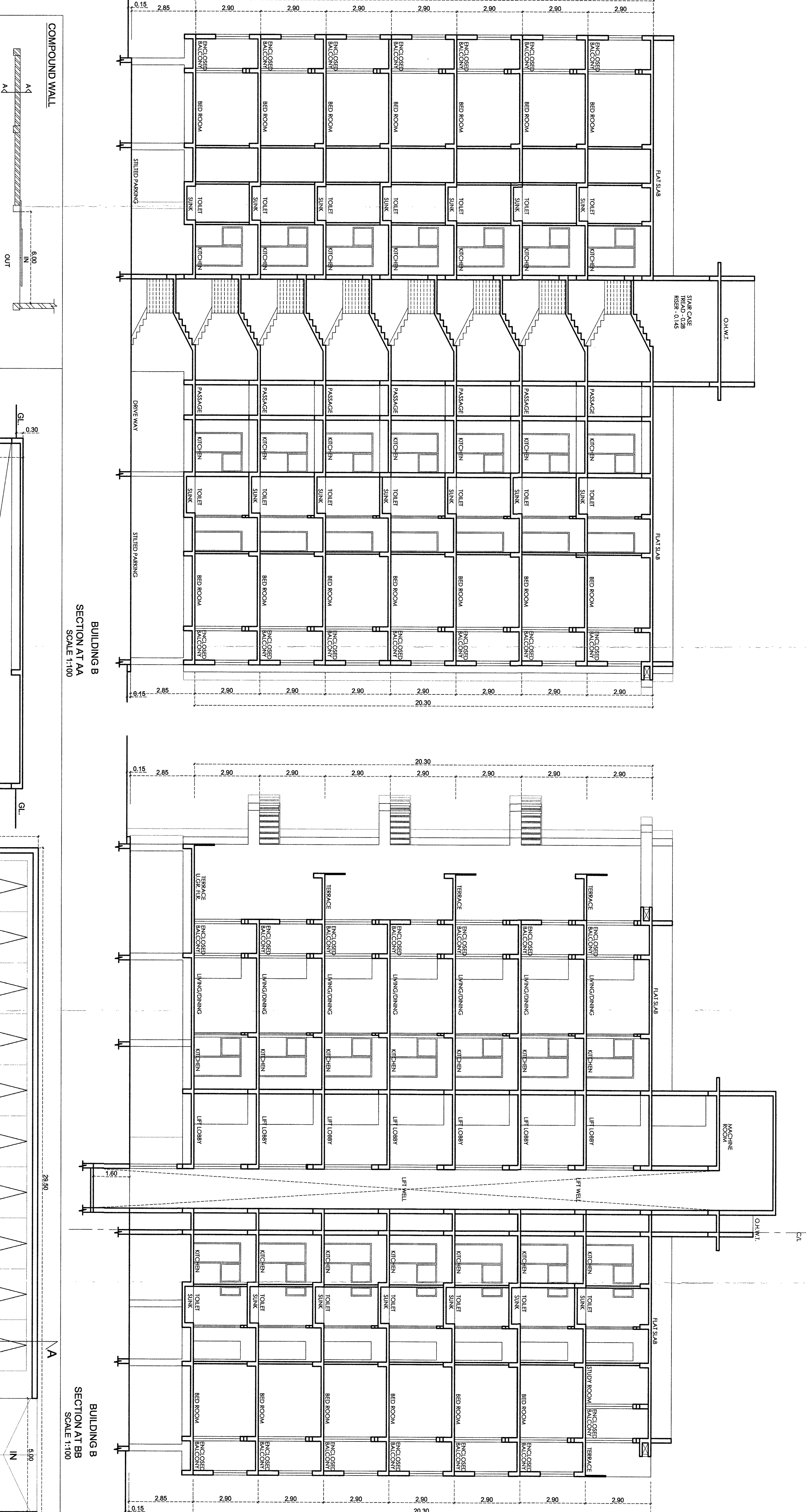
PETER MARTINS
Secretary of Tribunal

BLOCK - B



SCHEDULE OF DOORS AND WINDOWS

TYPE	SIZES	TYPE	SIZES
D1	1.00X2.20	W1	1.50X2.00
D2	0.80X2.20	W2	0.80X1.00
D3	0.80X2.10	W3	1.20X1.50
F01	3.00X2.20	V1	0.80X1.00
F02	2.20X2.20	V2	0.40X1.00



NOTE - ALL DIMENSION ARE IN CMS. SMTS. DRG. NO 0303

ARCHITECT
 M.S. ULYISSIS
 251 - A, MATHEIAS PLAZA,
 PANJIM - GOA, 403001
 PH. NO. 8332 2421950

OWNERS
 (M/S. DEVASHIRI NIRMALI LLP)

SCALE - 1:100 1:200 & 1:500 DATE 22 - 12 - 2018

PROPOSED CONSTRUCTION OF RESIDENTIAL BUILDING BLOCK - A, BLOCK - B, COMPOUND WALL CLUB HOUSE & SWIMMING POOL IN PROPERTY BEARING SURVEY NO. 172/15 AT TALEGAO VILLAGE, TISWADI TALUKA, GOA.

M.S. ULYISSIS
 ARCHITECTURAL MEMBER OF ARCHITECTS CONGRESS INDIA
 251 - A, MATHEIAS PLAZA,
 PANJIM - GOA 403001
 PH. - 91 832 2421950

DRG. NO. 1/3/3

MEMBER SECRETARY
 Planning & Dev. Authority
 3/8, Panaji Goa
 19 JAN 2019

SEIXE MARTINS
 Village President of Talega

DRG. No. 1/3/3

