

Charvi

REEMZ
Anjuna-Goa



HARASIDDH GROUP

Legacy of Delivering Excellence since 1978

info@harasiddhgroup.com
www.harasiddhgroup.com

SOFITEL HOSPITALITY & MANAGEMENT LLP

Team Architects

Ajit Redkar
Pradeep Sule
Mumbai

Structural Engineer

Paresh Gaitonde
Goa

"Goa RERA Registration No: _____"

Contact :

KP Kashmita Properties Pvt.Ltd.
+9122 26487375

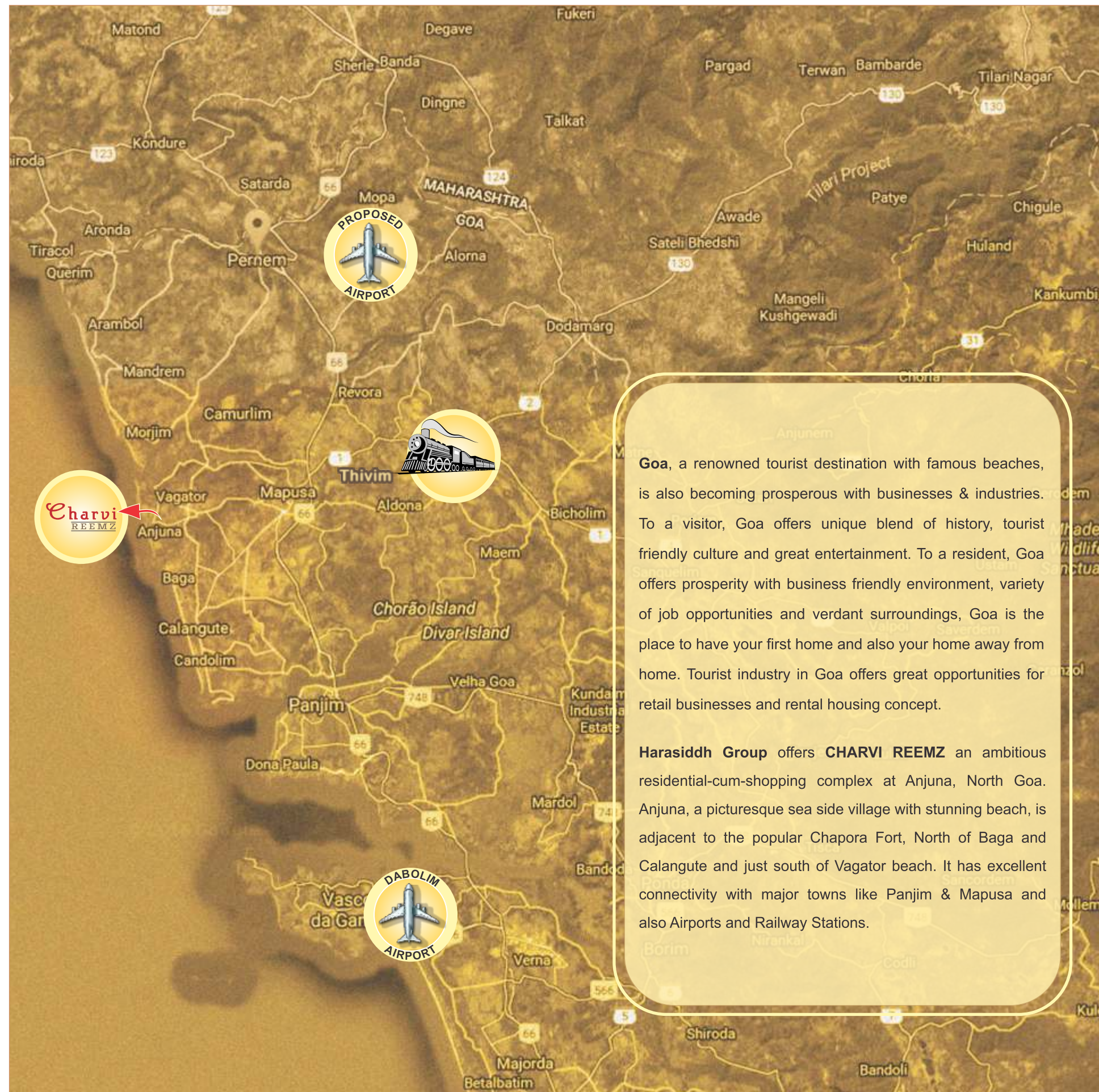
Ashit Mehta
+91 98210 76448
Hemant Jariwala
+91 98204 42014

Nimish Desai
+91 98671 53377
Vaibhav Shah
+91 98202 36550

Disclaimer : Developer reserves all rights to alter and amend plans, specifications, layouts etc. subject to approval. Contents of this brochure are indicative only and do not form part of the contract or agreement

GAYATRI : 93222 51620





Goa, a renowned tourist destination with famous beaches, is also becoming prosperous with businesses & industries. To a visitor, Goa offers unique blend of history, tourist friendly culture and great entertainment. To a resident, Goa offers prosperity with business friendly environment, variety of job opportunities and verdant surroundings, Goa is the place to have your first home and also your home away from home. Tourist industry in Goa offers great opportunities for retail businesses and rental housing concept.

Harasiddh Group offers CHARVI REEMZ an ambitious residential-cum-shopping complex at Anjuna, North Goa. Anjuna, a picturesque sea side village with stunning beach, is adjacent to the popular Chapora Fort, North of Baga and Calangute and just south of Vagator beach. It has excellent connectivity with major towns like Panjim & Mapusa and also Airports and Railway Stations.

Nestled in the heart of Anjuna, **CHARVI REEMZ** is in close proximity to happening and bustling spots like the beach, great restaurants and the flea market.



Fulfill your dreams, come to **CHARVI REEMZ**.

AS THE DAY GOES DOWN..., MOODS GO UP



LAYOUT PLAN

In tune with cozy Goan style and lifestyle, **CHARVI REEMZ** offers lavish 1 & 2 BHK apartments and shops. A gated residential community, secured with CCTV surveillance offering for its residents, a magnificent club house with fully equipped gymnasium and a swimming pool. Marvelous landscaped garden and children play area. Adequate parking facility. Infrastructure of internal roads, water supply network and sewerage treatment plant. Shopping line fronting prime roads of Anjuna which is ideal for restaurants, banks, retail shops, etc. **CHARVI REEMZ** is an architectural masterpiece planned over more than 3 acres of land.



Charvi
REEMZ
Anjuna-Goa

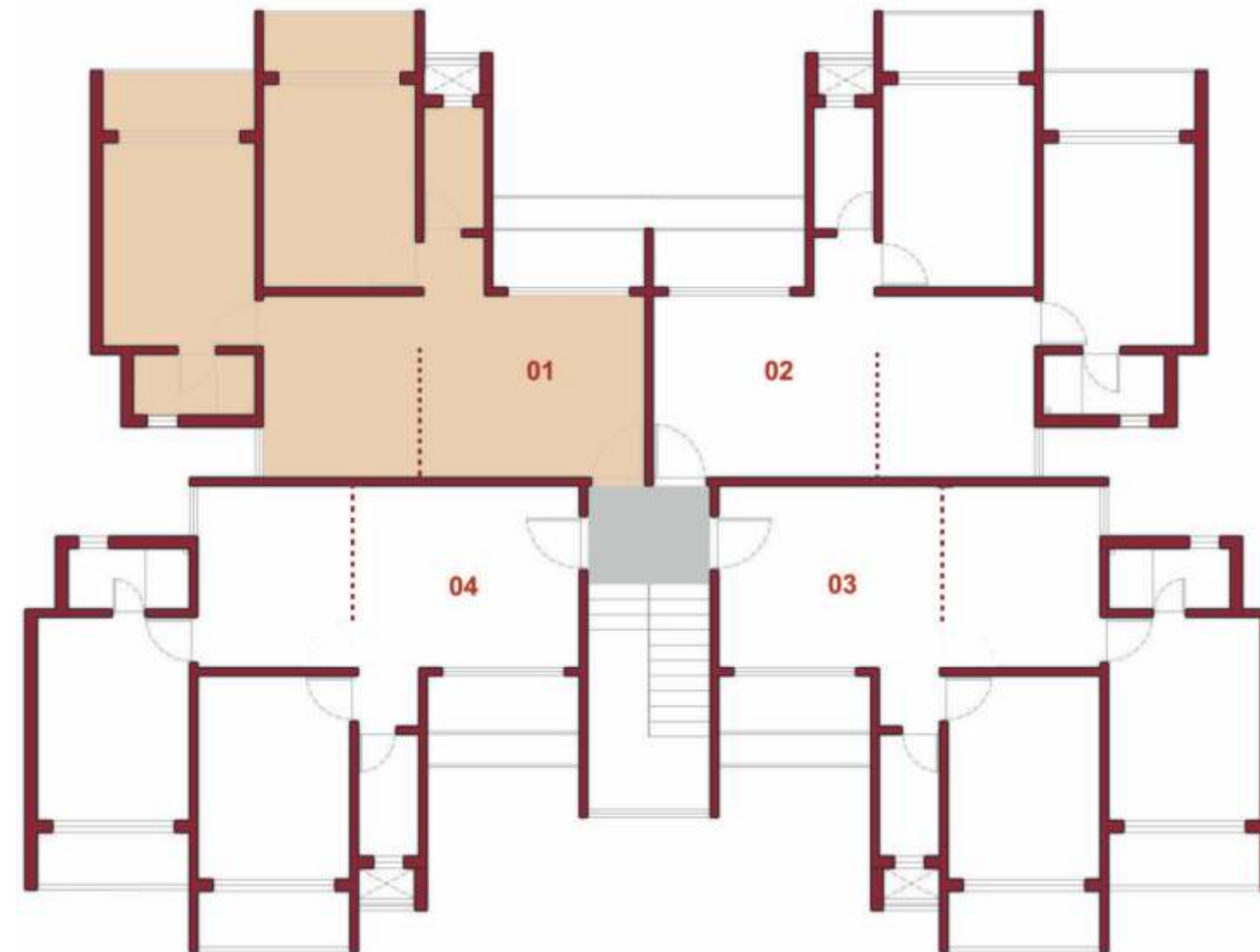


RESIDENTIAL - 2 BHK

1	LIVING ROOM	4.4 M X 3.6 M
2	KITCHEN & DINING	3.0 M X 3.6 M
3	BEDROOM	3.0 M X 4.0 M
4	TOILET	2.4 M X 1.2 M
5	BEDROOM	3.0 M X 4.0 M
6	TOILET	2.4 M X 1.2 M



RESIDENTIAL - 2 BHK

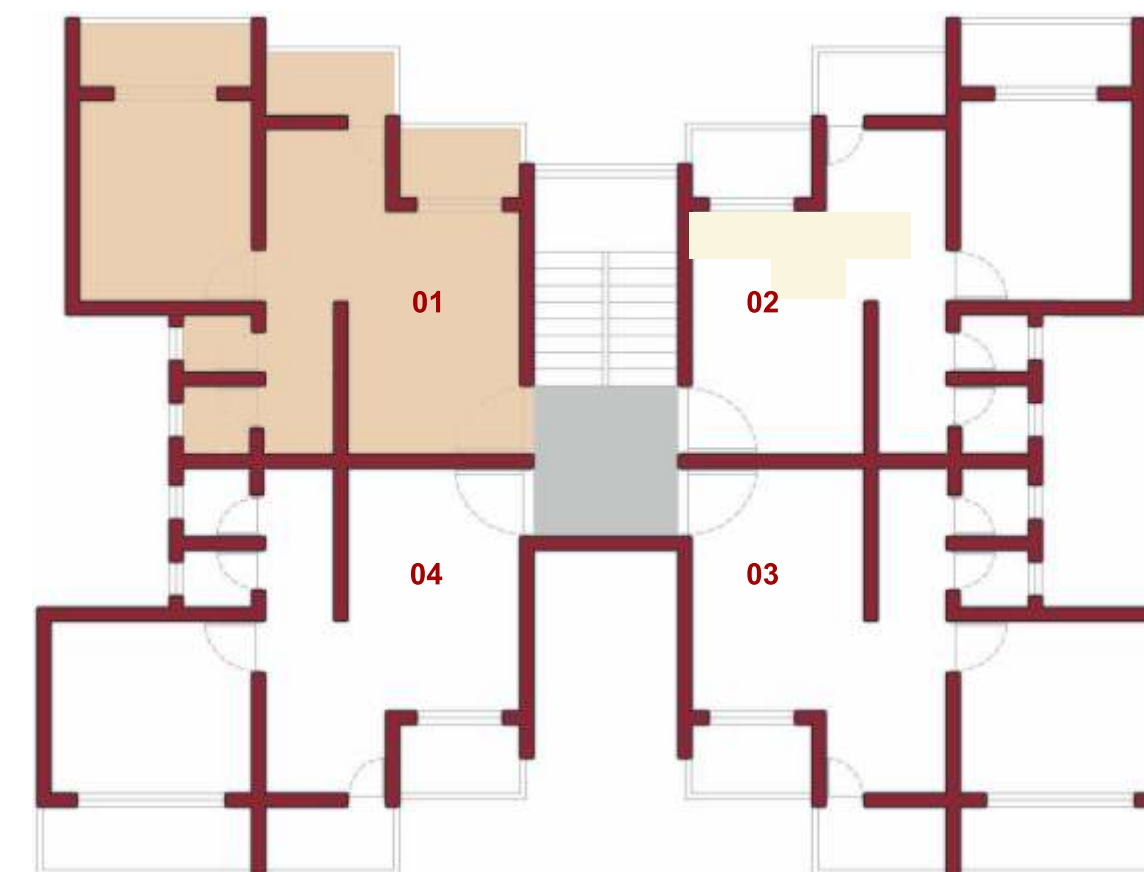


RESIDENTIAL - 1 BHK

1	LIVING ROOM	3.0 M X 4.3 M
2	KITCHEN & DINING	2.1 M X 3.0 M
3	BATH	1.2 M X 1.2 M
4	W.C.	1.2 M X 1.0 M
5	BEDROOM	3.0 M X 3.5 M



RESIDENTIAL - 1 BHK



SHOPPING



← TO VAGATOR BEACH

TO ANJUNA BEACH →

AMENITIES, WE CALL THEM NECESSITIES..



Planning with optimum space utilization, natural light and ventilation



Gated Community. Intercom Security System . CCTV Surveillance.



Water Supply Network through Automatic Pumps. Sewerage Disposal System.



Adequate Parking Space. Internal Roads with Street lights.

Mirror Polished Vitrified Tiles in all rooms. Toilets with designer tiles. Anti-skid tiles in balcony / Ota and toilet shower area flooring.



Quality Bathroom fittings. Single Lever Mixtures & Geysers in each toilet.



Ergonomically designed Kitchen and Granite Platform and SS sink.

Teak Wood Door frames. Laminated doors with lock. Large Span Powder Coated / Anodized Aluminium Sliding Windows.

Internal walls and Ceilings in POP with Acrylic paint. External Walls with Superior Acrylic Paint.

Concealed copper wiring with adequate points & good quality switches. T.V., Telephone Data Point in all rooms. MCB / ELCB as per requirement.

For Shops :
Mirror Polished Vitrified Tiles in flooring. Steel rolling shutters for shops on front sides. Aluminium powder coated/ anodized windows with steel grill for toilet windows. Paved Roadside Frontage. Attached W.C.



CLUB HOUSE WITH SWIMMING POOL AND GYMNASIUM



WELL LANDSCAPED GARDEN WITH CHILDREN PLAY AREA

