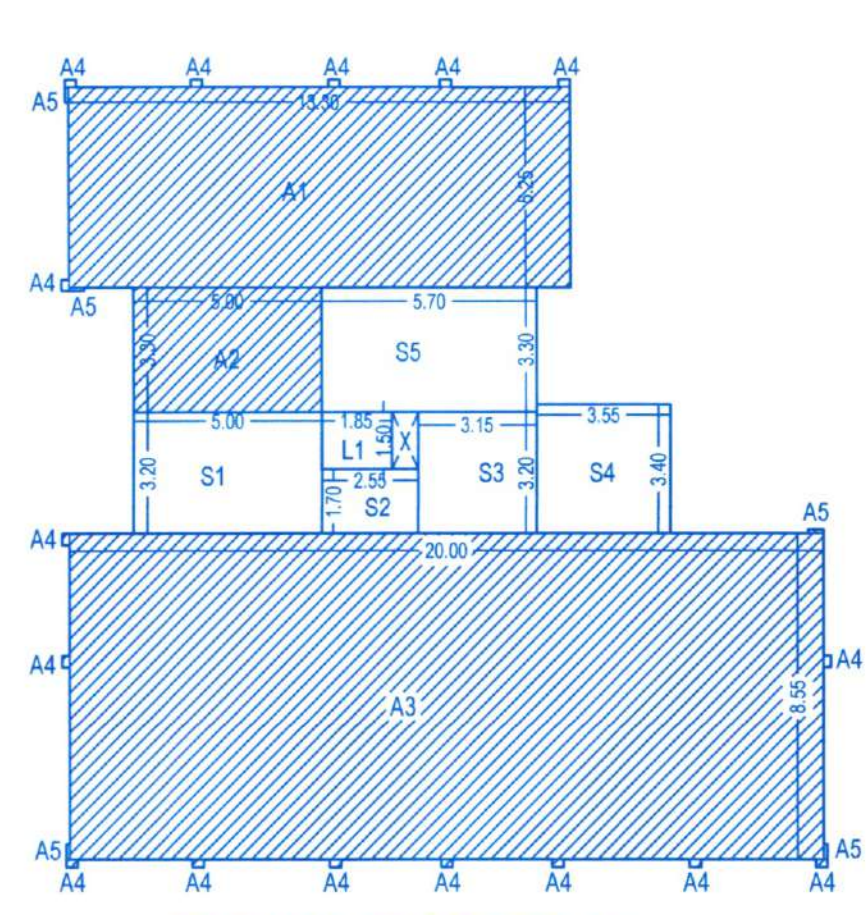


**AREA CALCULATION---BUILDING "B"**



**GROUND FLOOR PLAN**

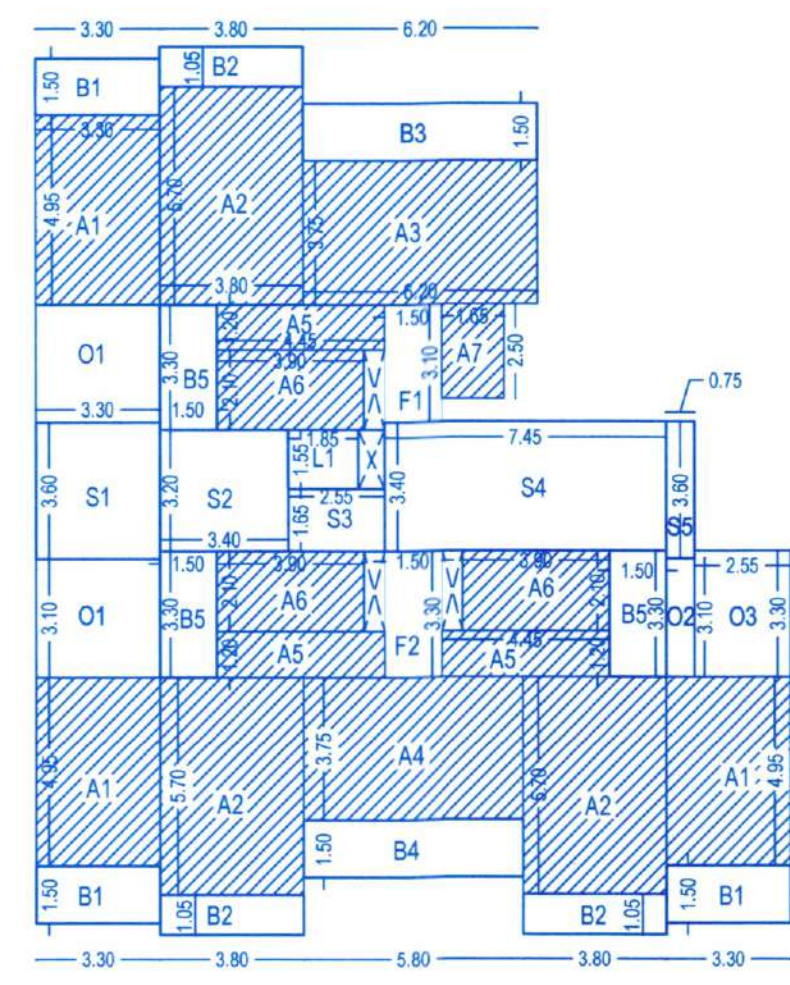
**FAR**  
 A1 =13.30x5.25 =69.83M<sup>2</sup>  
 A2 =5.00x3.30 =16.50M<sup>2</sup>  
 A3 =20.00x8.55 =171.00M<sup>2</sup>  
 16A4 =16x0.20x0.30 =0.96M<sup>2</sup>  
 SA5 =5x0.10x0.40 =0.20M<sup>2</sup>  
**TOTAL =258.49M<sup>2</sup>**

**STAIRCASE**  
 S1 =5.00x3.20 =16.00M<sup>2</sup>  
 S2 =2.55x1.70 =4.34M<sup>2</sup>  
 S3 =3.15x3.20 =10.08M<sup>2</sup>  
 S4 =3.55x3.40 =12.07M<sup>2</sup>  
 S5 =5.70x3.30 =18.81M<sup>2</sup>

**LIFT**  
 L1 =1.85x1.50 =2.78M<sup>2</sup>  
**TOTAL =2.78M<sup>2</sup>**

**COVERED AREA =FAR+STAIRCASE+LIFT**  
 =258.49+61.30+2.78  
**=322.57M<sup>2</sup>**

**TOTAL BUILT UP AREA =FAR+STAIRCASE+LIFT**  
 =258.49+61.30+2.78  
**=322.57M<sup>2</sup>**



**FIRST FLOOR PLAN**

**FAR**  
 3A1 =3x3.30x4.95 =49.01M<sup>2</sup>  
 3A2 =3x3.80x5.70 =64.98M<sup>2</sup>  
 A3 =6.20x3.75 =23.25M<sup>2</sup>  
 A4 =5.80x3.75 =21.75M<sup>2</sup>  
 3A5 =3x4.45x1.20 =16.02M<sup>2</sup>  
 3A6 =3x3.90x2.10 =24.57M<sup>2</sup>  
 A7 =1.65x2.50 =4.13M<sup>2</sup>  
**TOTAL =203.71M<sup>2</sup>**

**STAIRCASE**  
 S1 =3.30x3.60 =11.88M<sup>2</sup>  
 S2 =3.40x3.20 =10.88M<sup>2</sup>  
 S3 =2.55x1.65 =4.21M<sup>2</sup>  
 S4 =7.45x3.40 =25.33M<sup>2</sup>  
 S5 =0.75x3.60 =2.70M<sup>2</sup>  
**TOTAL =55.00M<sup>2</sup>**

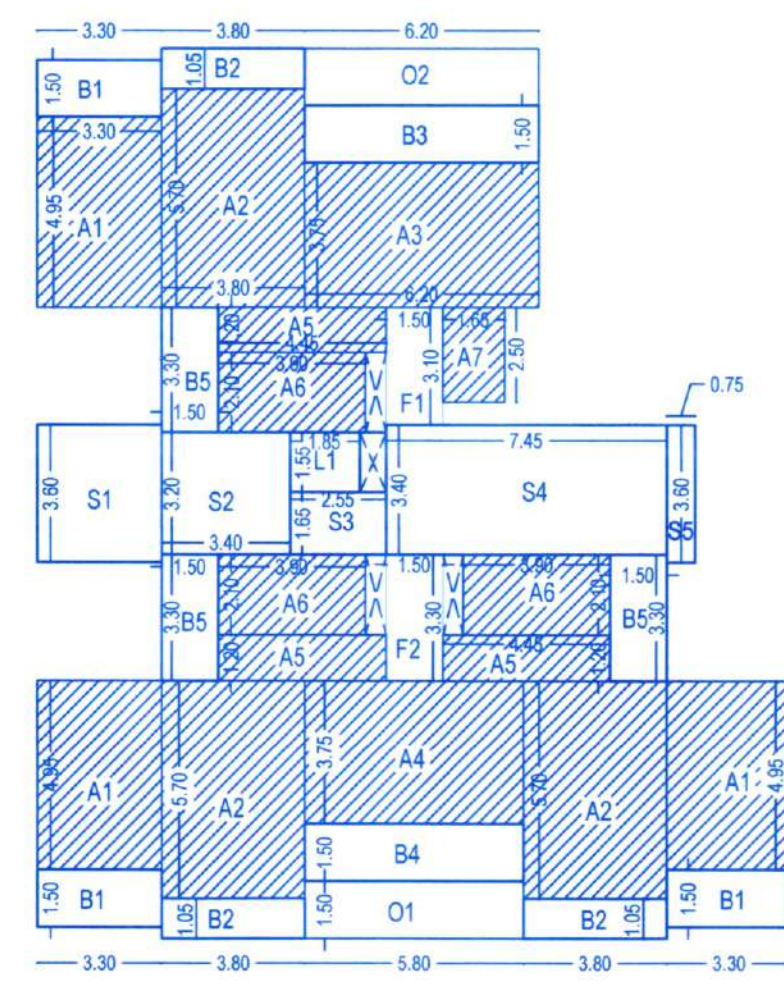
**LIFT**  
 L1 =1.85x1.55 =2.87M<sup>2</sup>  
**TOTAL =2.87M<sup>2</sup>**

**FOYER**  
 F1 =1.50x3.10 =4.65M<sup>2</sup>  
 F2 =1.50x3.30 =4.95M<sup>2</sup>  
**TOTAL =9.60M<sup>2</sup>**

**BALCONY**  
 3B1 =3x3.30x1.50 =14.85M<sup>2</sup>  
 3B2 =3x3.80x1.05 =11.97M<sup>2</sup>  
 B3 =6.20x1.50 =9.30M<sup>2</sup>  
 B4 =5.80x1.50 =8.70M<sup>2</sup>  
 3B5 =3x1.50x3.30 =14.85M<sup>2</sup>  
**TOTAL =59.67M<sup>2</sup>**

**OPEN TERRACE**  
 2O1 =2x3.30x3.10 =20.46M<sup>2</sup>  
 O2 =0.75x3.10 =2.33M<sup>2</sup>  
 O3 =2.25x3.30 =7.43M<sup>2</sup>  
**TOTAL =31.21M<sup>2</sup>**

**TOTAL BUILT UP AREA =FAR+STAIRCASE+LIFT+FOYER+BALCONY**  
 =203.71+55.00+2.87+9.60+59.67  
**=330.85M<sup>2</sup>**



**TYPICAL SECOND & FOURTH FLOOR PLAN**

**FAR**  
 3A1 =3x3.30x4.95 =49.01M<sup>2</sup>  
 3A2 =3x3.80x5.70 =64.98M<sup>2</sup>  
 A3 =6.20x3.75 =23.25M<sup>2</sup>  
 A4 =5.80x3.75 =21.75M<sup>2</sup>  
 3A5 =3x4.45x1.20 =16.02M<sup>2</sup>  
 3A6 =3x3.90x2.10 =24.57M<sup>2</sup>  
 A7 =1.65x2.50 =4.13M<sup>2</sup>  
**TOTAL =203.71M<sup>2</sup>**

**STAIRCASE**  
 S1 =3.30x3.60 =11.88M<sup>2</sup>  
 S2 =3.40x3.20 =10.88M<sup>2</sup>  
 S3 =2.55x1.65 =4.21M<sup>2</sup>  
 S4 =7.45x3.40 =25.33M<sup>2</sup>  
 S5 =0.75x3.60 =2.70M<sup>2</sup>  
**TOTAL =55.00M<sup>2</sup>**

**LIFT**  
 L1 =1.85x1.55 =2.87M<sup>2</sup>  
**TOTAL =2.87M<sup>2</sup>**

**FOYER**  
 F1 =1.50x3.10 =4.65M<sup>2</sup>  
 F2 =1.50x3.30 =4.95M<sup>2</sup>  
**TOTAL =9.60M<sup>2</sup>**

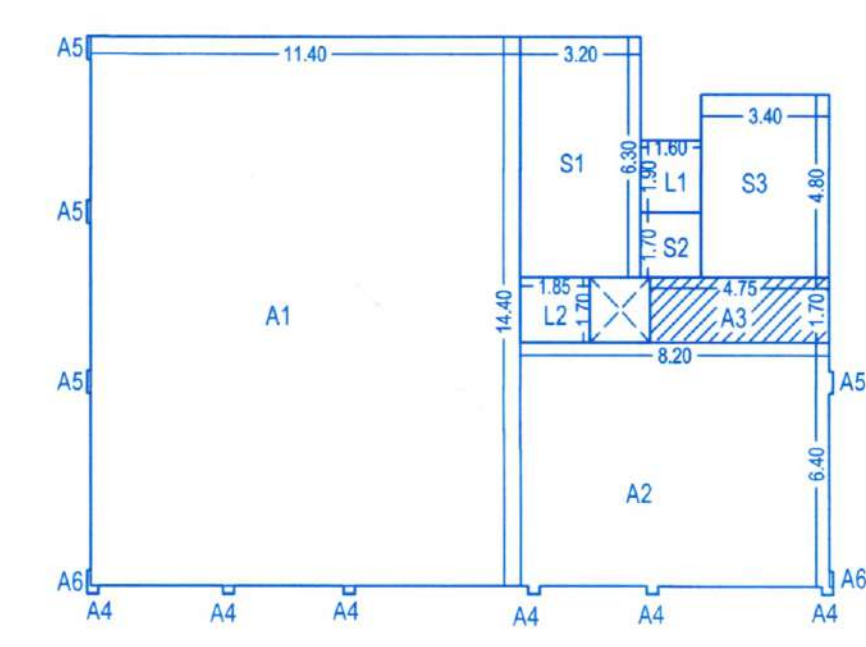
**BALCONY**  
 3B1 =3x3.30x1.50 =14.85M<sup>2</sup>  
 3B2 =3x3.80x1.05 =11.97M<sup>2</sup>  
 B3 =6.20x1.50 =9.30M<sup>2</sup>  
 B4 =5.80x1.50 =8.70M<sup>2</sup>  
 3B5 =3x1.50x3.30 =14.85M<sup>2</sup>  
**TOTAL =59.67M<sup>2</sup>**

**OPEN TERRACE**  
 O1 =5.80x1.50 =8.70M<sup>2</sup>  
 O2 =6.20x1.50 =9.30M<sup>2</sup>  
**TOTAL =18.00M<sup>2</sup>**

**TOTAL BUILT UP AREA =FAR+STAIRCASE+LIFT+FOYER+BALCONY**  
 =203.71+55.00+2.87+9.60+59.67  
**=330.85M<sup>2</sup>**

CHIEF OFFICER  
 MARGAO MUNICIPAL COUNCIL

**AREA CALCULATION---BUILDING "C"**



**GROUND FLOOR PLAN**

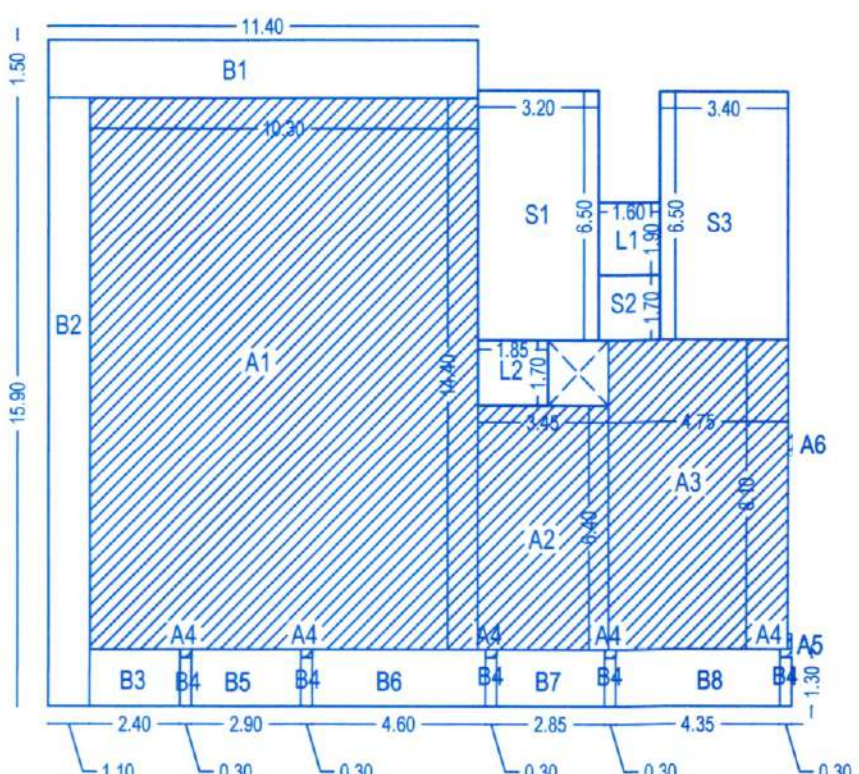
**FAR**  
 A1 =11.40x14.40 =164.16M<sup>2</sup>  
 A2 =8.20x6.40 =52.48M<sup>2</sup>  
 A3 =4.75x1.70 =8.08M<sup>2</sup>  
 6A4 =6x0.20x0.30 =0.36M<sup>2</sup>  
 4A5 =4x0.10x0.60 =0.24M<sup>2</sup>  
 2A6 =2x0.10x0.40 =0.08M<sup>2</sup>  
**TOTAL =225.40M<sup>2</sup>**

**STAIRCASE**  
 S1 =3.20x6.50 =20.80M<sup>2</sup>  
 S2 =1.60x1.70 =2.72M<sup>2</sup>  
 S3 =3.40x4.80 =16.32M<sup>2</sup>  
**TOTAL =39.20M<sup>2</sup>**

**LIFT**  
 L1 =1.60x1.90 =3.04M<sup>2</sup>  
 L2 =1.85x1.70 =3.15M<sup>2</sup>  
**TOTAL =6.19M<sup>2</sup>**

**COVERED AREA =FAR+STAIRCASE+LIFT**  
 =225.40+39.20+6.19  
**=270.79M<sup>2</sup>**

**TOTAL BUILT UP AREA =FAR+STAIRCASE+LIFT**  
 =225.40+39.20+6.19  
**=270.79M<sup>2</sup>**



**FIRST & SECOND FLOOR PLAN**

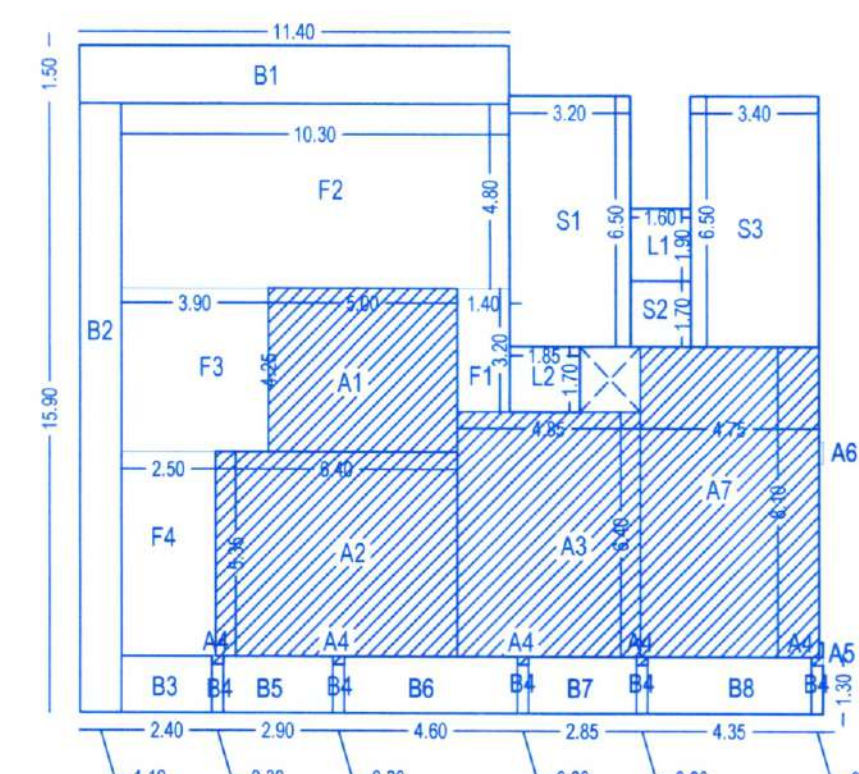
**FAR**  
 A1 =10.30x14.40 =148.32M<sup>2</sup>  
 A2 =3.45x6.40 =22.08M<sup>2</sup>  
 A3 =4.75x8.10 =38.48M<sup>2</sup>  
 5A4 =5x0.20x0.30 =0.30M<sup>2</sup>  
 A5 =0.10x0.40 =0.04M<sup>2</sup>  
 A6 =0.10x0.60 =0.06M<sup>2</sup>  
**TOTAL =209.28M<sup>2</sup>**

**STAIRCASE**  
 S1 =3.20x6.50 =20.80M<sup>2</sup>  
 S2 =1.60x1.70 =2.72M<sup>2</sup>  
 S3 =3.40x6.50 =22.10M<sup>2</sup>  
**TOTAL =45.62M<sup>2</sup>**

**LIFT**  
 L1 =1.60x1.90 =3.04M<sup>2</sup>  
 L2 =1.85x1.70 =3.15M<sup>2</sup>  
**TOTAL =6.19M<sup>2</sup>**

**TOTAL BUILT UP AREA =FAR+STAIRCASE+LIFT+BALCONY**  
 =209.28+45.62+6.19+62.20  
**=323.29M<sup>2</sup>**

**BALCONY**  
 B1 =11.40x1.50 =17.10M<sup>2</sup>  
 B2 =11.00x1.50 =16.50M<sup>2</sup>  
 B3 =2.40x1.50 =3.60M<sup>2</sup>  
 5B4 =5x0.30x1.30 =3.90M<sup>2</sup>  
 B5 =2.90x1.50 =4.35M<sup>2</sup>  
 B6 =4.60x1.50 =6.90M<sup>2</sup>  
 B7 =2.85x1.50 =4.28M<sup>2</sup>  
 B8 =4.35x1.50 =6.53M<sup>2</sup>  
**TOTAL =62.20M<sup>2</sup>**



**THIRD FLOOR PLAN**

**FAR**  
 A1 =5.00x4.25 =21.25M<sup>2</sup>  
 A2 =6.40x5.35 =34.24M<sup>2</sup>  
 A3 =4.85x6.40 =31.04M<sup>2</sup>  
 5A4 =5x0.30x0.20 =0.30M<sup>2</sup>  
 A5 =0.10x0.40 =0.04M<sup>2</sup>  
 A6 =0.10x0.60 =0.06M<sup>2</sup>  
 A7 =4.75x8.10 =38.47M<sup>2</sup>  
**TOTAL =125.40M<sup>2</sup>**

**STAIRCASE**  
 S1 =3.20x6.50 =20.80M<sup>2</sup>  
 S2 =1.60x1.70 =2.72M<sup>2</sup>  
 S3 =3.40x6.50 =22.10M<sup>2</sup>  
**TOTAL =45.62M<sup>2</sup>**

**LIFT**  
 L1 =1.60x1.90 =3.04M<sup>2</sup>  
 L2 =1.85x1.70 =3.15M<sup>2</sup>  
**TOTAL =6.19M<sup>2</sup>**

**TOTAL BUILT UP AREA =FAR+STAIRCASE+LIFT+BALCONY+FOYER**  
 =125.40+45.62+6.19+62.20+83.88  
**=323.29M<sup>2</sup>**

**BALCONY**  
 B1 =11.40x1.50 =17.10M<sup>2</sup>  
 B2 =11.00x1.50 =16.50M<sup>2</sup>  
 B3 =2.40x1.50 =3.60M<sup>2</sup>  
 5B4 =5x0.30x1.30 =3.90M<sup>2</sup>  
 B5 =2.90x1.50 =4.35M<sup>2</sup>  
 B6 =4.60x1.50 =6.90M<sup>2</sup>  
 B7 =2.85x1.50 =4.28M<sup>2</sup>  
 B8 =4.35x1.50 =6.53M<sup>2</sup>  
**TOTAL =62.20M<sup>2</sup>**

**FOYER & SOCIETY OFFICE**  
 F1 =1.40x3.20 =4.48M<sup>2</sup>  
 F2 =10.30x4.80 =49.44M<sup>2</sup>  
 F3 =3.90x4.25 =16.58M<sup>2</sup>  
 F4 =2.50x5.35 =13.38M<sup>2</sup>  
**TOTAL =83.88M<sup>2</sup>**

**SCHEDULE OF OPENINGS**

TYPE	SIZE	TYPE	SIZE
RS1	3.00 X 4.40	SW1	2.20 X 1.60
RS2	2.50 X 4.40	SW2	1.50 X 1.60
FG1	4.65 X 4.40	SW3	0.90 X 1.60
FG2	3.70 X 4.40	KW1	1.00 X 1.30
DD	1.50 X 2.20	KW2	0.90 X 1.30
D1	1.00 X 2.20	KW3	0.80 X 1.30
D2	0.90 X 2.20	V1	0.60 X 1.00
D3	0.75 X 2.20	V2	0.55 X 1.00
KD	0.90 X 2.50	LD	0.80 X 2.20
FD1	3.40 X 2.50	FD	1.00 X 2.20
FD2	3.20 X 2.50	FD6	4.65 X 2.50
FD3	3.10 X 2.50	FD7	7.70 X 2.50
FD4	3.00 X 2.50	FD8	4.30 X 2.50
FD5	2.80 X 2.50	FD9	4.00 X 2.50
		FD10	3.90 X 2.50

ALL BALCONIES TO BE ENCLOSED WITH SLIDING GLASS PANEL SHUTTER WITH PARAPET

OWNER : ARP BORDA CONSTRUCTION LLP.

PROJECT : "FERREIRA ARCADE"  
 PROPOSED COMMERCIAL AND RESIDENTIAL BUILDINGS AND COMPOUND WALL AT BORDA, MARGAO - GOA

DATE : 14/11/23

SCALE : 1:100 & 1:500

OWNER : UDAY SAWANT

ENGINEER : UDAY SAWANT

REG. NO. ER/0022/2019

SAWANT & ASSOCIATES ARCHITECTS, ENGINEERS & INTERIOR DESIGNERS

REVISD

Municipal Engineer  
 Margao Municipal Council

Development Permission Granted  
 Subject To Conditions Vide Order  
 No SGPDA/P/6355/18/4/174-25  
 Dated: 18/04/2024

Member Secretary

Signature

SAWANT & ASSOCIATES ARCHITECTS, ENGINEERS & INTERIOR DESIGNERS  
 PANA ARCADE, 1ST FLOOR  
 MARGAO, MARGAO, GOA  
 PHONE NO. 972692