

We invite you... call us today and reserve your private appointment for this exceptional new residential opportunity.

We take pride in providing a truly valuable real estate to be your next home, and we make it part of our commitment to provide sustainable real estate development, balancing development with environment care and social responsibility.



Head Office:

302, Mathias Plaza, 18th June Road, Panaji - 403 001, Goa, India
Tel: (0832) 2224485, 2220568 / 69
Mob: (91) 8888816923
E-mail : sales@saldanhagroup.com

DS - 1, 2, Pancharatna, Martires Dias Road Margao - 403 601, Goa, India
Tel: (0832) 2733576, 2737330
E-mail : margao.office@saldanhagroup.com

5/6, Pawan Palace, Sitladevi Temple Road, Mahim - 400 016, Mumbai
Tel: (022) 24314300 / 301
E-mail : mumbai.office@saldanhagroup.com

Web Site : www.saldanhagroup.com

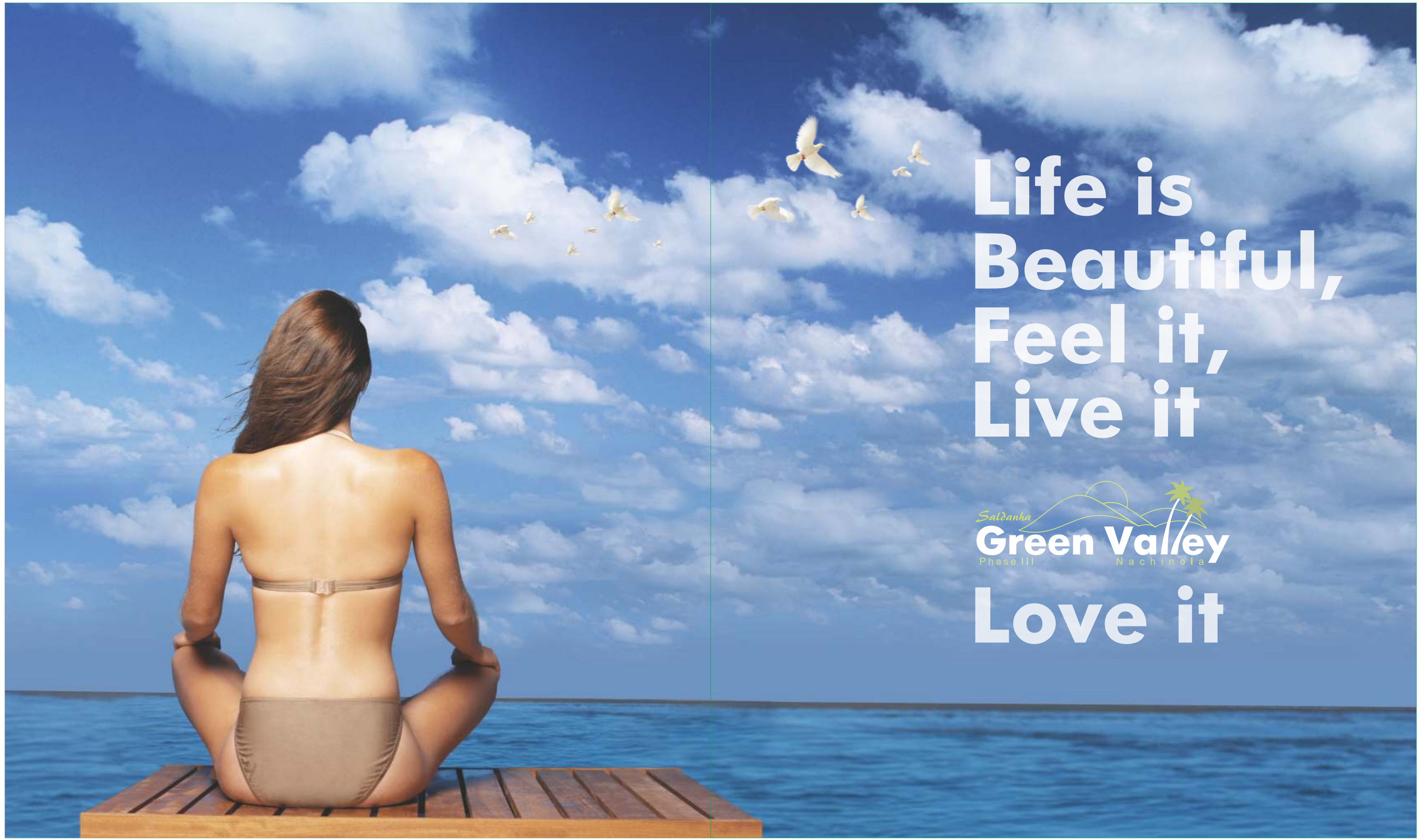
This is not a legal offering and all plans and visuals are an artists impression and subject to revision.

Designed by: SHIRISH, 9822144621



**Life is
Where
Nature is**



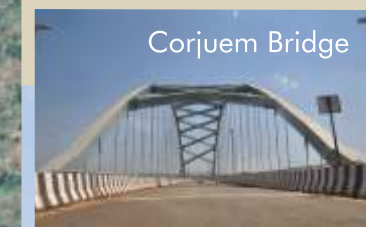


**Life is
Beautiful,
Feel it,
Live it**

Saldanha
Green Valley
Phase III *Nachinola*

Love it

Experience living in Quiet, Serene & Tranquil Countryside



Distances from the Project :
 To Mapusa - 6 Kms.
 To Panaji - 16 Kms.
 To Thivim Rly Station - 9 Kms.
 To Dabolim Airport - 38 Kms.
 To Beach Belt - 15 Kms



PHASE III



Saldanha Green Valley Villa's exclusive custom built combine of just two independent villa's, overlooking the green valley and fields. Inspired by nature and vested in the quaint village of Nachinola.

The open floor plan combined with high ceilings gives it a very airy and open feel. From the infinity pool and outdoor lounge area, this spacious and open plan offers spectacular view of the valley, green fields and the horizon.

With terraced landscape gardens surrounding the villas, with each terrace adorned with different plants and foliage.

Fully equipped with servant /security room, solar heater, CCTV network/ cable, split AC in all rooms, covered car parking for 2 cars and internal elevator.

This beautiful unspoilt part of Nachinola is the best place to own an exclusive villa.



Life,
Pampered
& Enriched



Experience
living in
Quiet,
Serene
and
Tranquil
Countryside

Features

- Conveniently located connecting Mapusa.
- Covered car parking.
- Vitrified flooring for all room, with Anti skid tiles for bathroom, with hot and cold water arrangements.
- French windows for living room, giving a better feel of the outdoor.
- Kitchen platform with Granite top & Stainless Steel Sink.
- Main door with Teakwood and brass fixtures, other doors with teakwood frame and marine ply panels.
- Internal road with Interlocking pavers & landscape gardens.
- Provision for Inverter connection for power back up.
- Individual Solar water heater for each villa to ensure continues hot & cold water in all taps.

Amenities

- Independent Swimming Pool at Upper Ground Floor Level.
- Internal Elevator.
- Stilt Parking for 2 Cars.
- Solar Water Heaters
- Landscaped Garden
- Inverter provision
- DTH cable Connection.
- CCTV Network.
- Split A/c in all Rooms.
- Servant's room



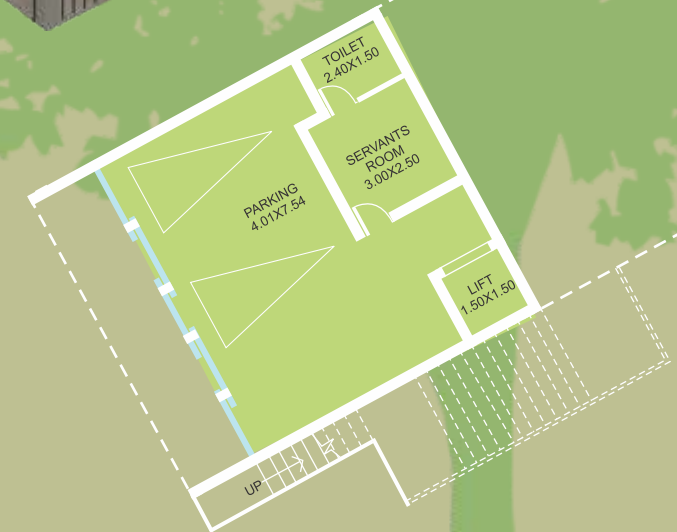
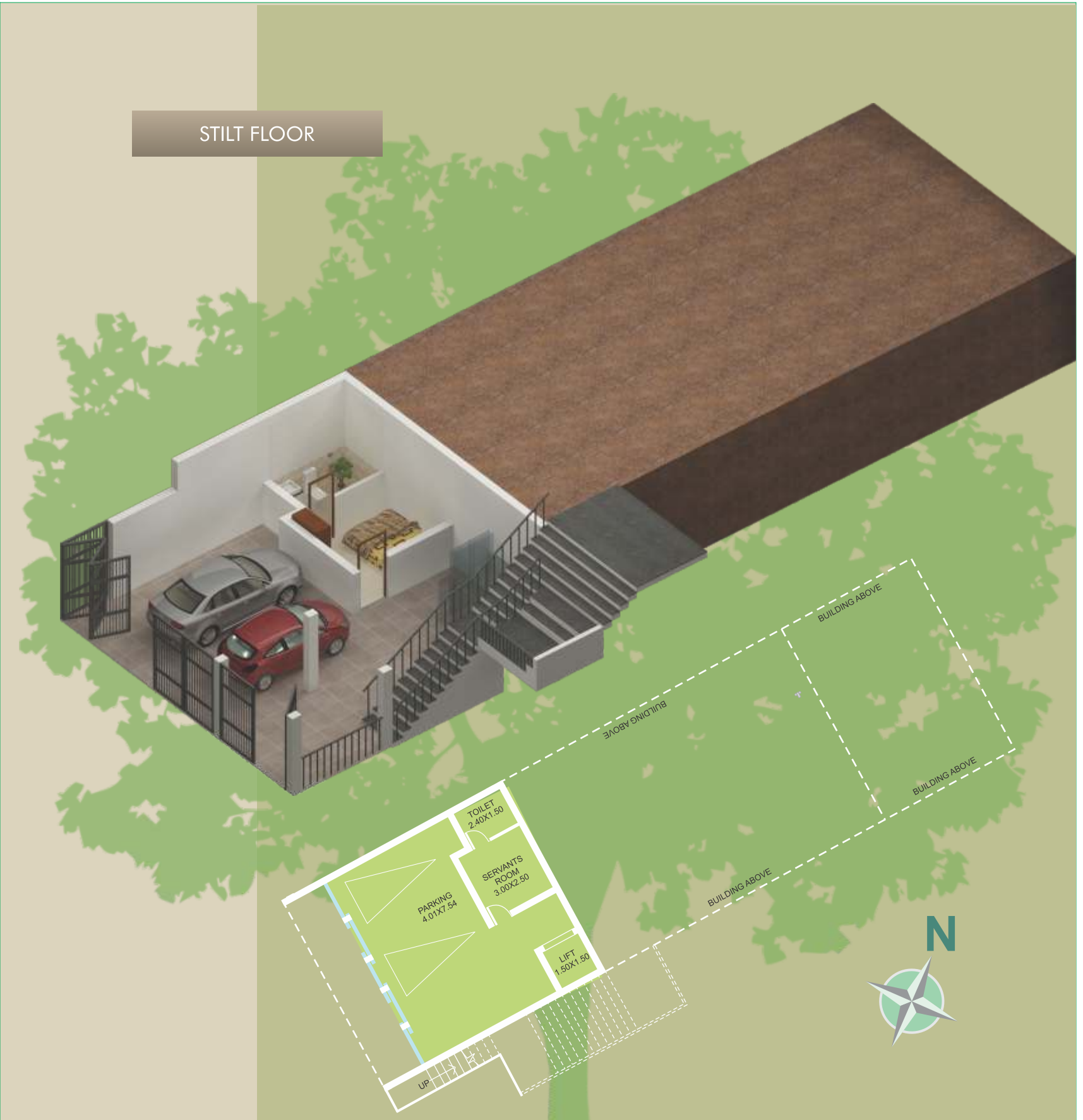
SITE PLAN



Each villa spread over an area of 662.5 sqmts of land, with a total super built up area of 360.95 sqmts.

Spacious and open plan residence with four bedrooms, living room, Dining room, family room each with a spectacular view of the valley and the horizon.

STILT FLOOR



Unit	Carpet Area	S. B. Area	Parking Area
STILT	17.20 Sqm.	21.57 Sqm.	40.05 Sqm.

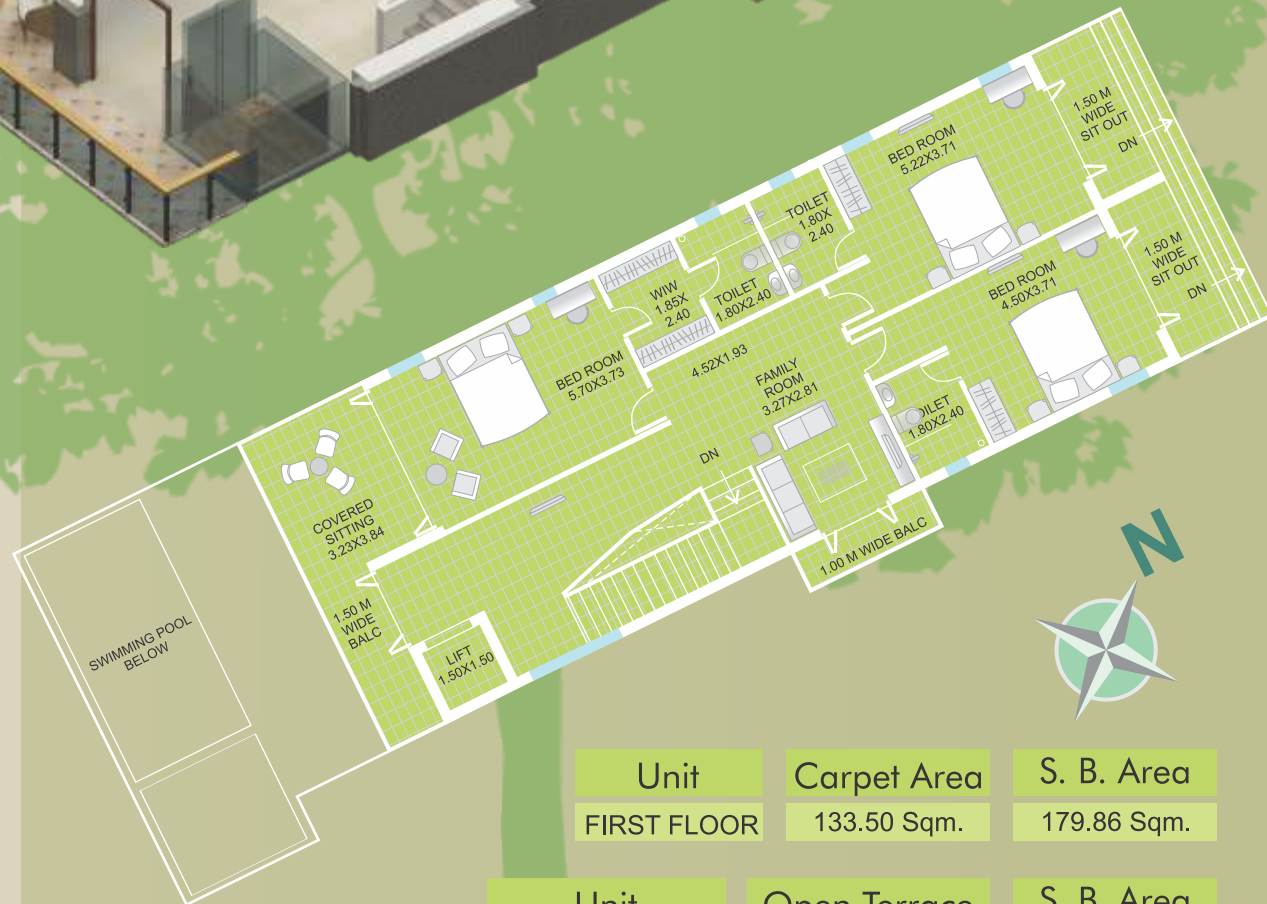
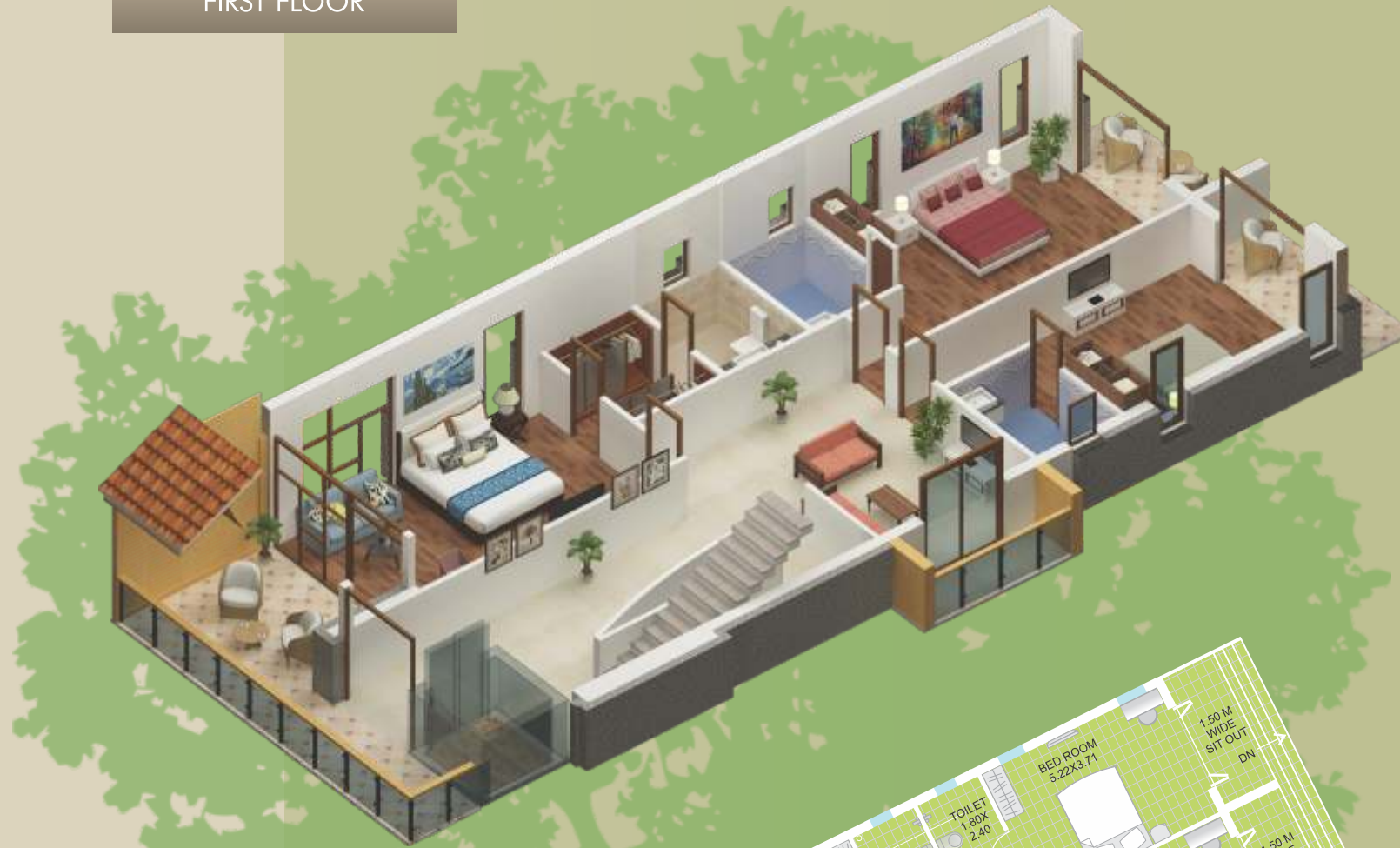
UPPER GROUND FLOOR



Unit	Carpet Area	S. B. Area	Deck & Gazebo Area	Swimming Pool Area
UPPER GROUND	100.38 Sqm.	119.47 Sqm.	41.93 Sqm.	19.35 Sqm.



FIRST FLOOR



Unit	Carpet Area	S. B. Area
FIRST FLOOR	133.50 Sqm.	179.86 Sqm.

Unit	Open Terrace	S. B. Area
SECOND FLOOR	47.61 Sqm.	17.52 Sqm.

