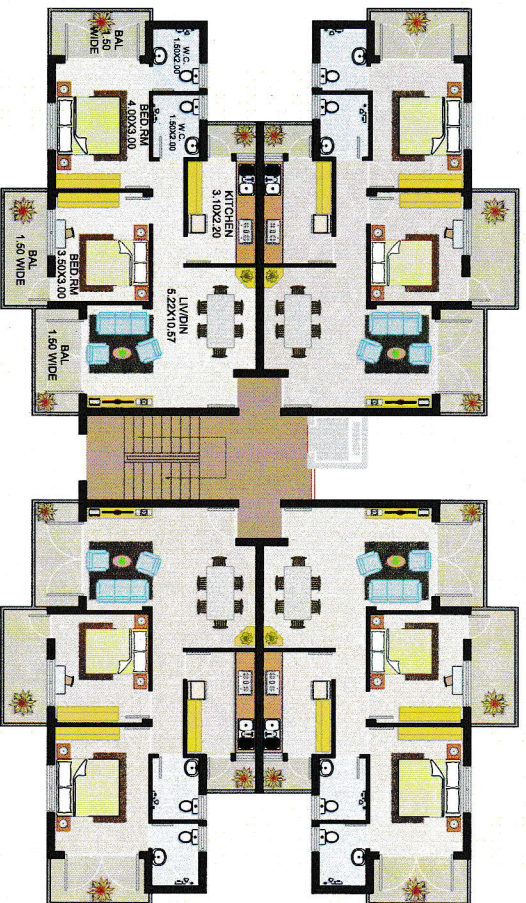


Perfect choice in nature for ideal Home !

Shetye
Vihar



BUILDING A/B



TYPICAL UPPER GROUND, FIRST, SECOND, FLOOR PLAN

SPECIFICATIONS

STRUCTURE : RCC framed structure with sloping roof covered with Mangalore tiles.

FLOORING : Entire flat will be provided with Nano Vitrified Tiles.

FRAMEWORK : Main door of Teakwood, Internal frames of sal wood, internal doors are laminated flush doors.

DECOR : Internally oil bound distemper and Externally painted with Asian APEX

KITCHEN : Granite platform with stainless steel sink and Ceramic tiles dado 1.20 mt. above platform with provision for washing machine and exhaust fan.

ELECTRICAL : Electric cabling will be done with premium quality (ISI Mark) Cables and modular switches premium make will be used.

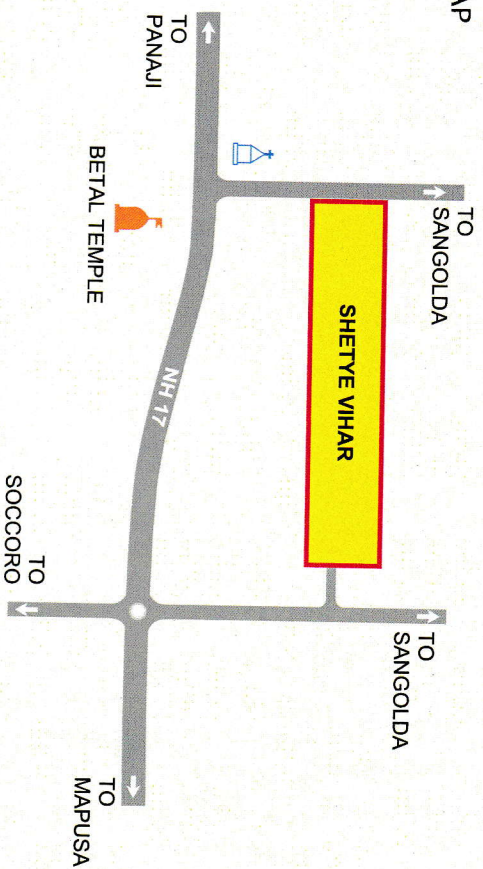
TOILETS : Sanitary ware will be of ARK or equivalent WC, Wash Basin and Shower with hot and cold water arrangement.

WATER SUPPLY : Underground sump with overhead tank supply.



- Inverter provision for apartments
- Covered Stilt parking
- Backup generator for Lift
- Ample water supply
- Compound wall with Landscaping

LOCATION MAP
(not to scale)



SHETYE VIHAR is a spacious & ideal residential scheme, conveniently situated in an residential locate away from the hustle bustle of the city and traffic congestion, yet close to all urban amenities life has to offer. It is in close proximity to educational institutions, bus stand, market places and places of worship.

Consulting Architect and Engineers:

M/s. UMESH SHIRODKAR & ASSOCIATES

(Architect - Townplanners)

Ansabhat, Mapusa, Goa

Ph: 0832-2910142

Mb : 9822120788

For Booking:

M/s. SHETYE CONSTRUCTION

NH 17 Road, PDA Colony,

Maui Bldg. Ground Floor,

Behind Domino Pizza,

Porvorim, Goa.

**Quick
Inquiry**

**9822130338
8888862458**