



BIG VISHWA
ventura group

La Parla

Premium Residences in Socorro - Goa



Where Trust & Relation Begins



Goa, known as the pearl of the orient or paradise on earth, is a land of natural beauty, tranquility and serenity.

Panoramic views of white sandy beaches, surrounded by whispering palms and quaint villages. Lush green paddy fields and coconut groves fill the entire state, inviting you to its local colorful flea markets and happening night life.

People from all around the world visit Goa every year. Some fall in love with the place and decide to make it their home..

Socorro is a small quaint village on the north banks of the Mandovi river, with lush greenery and hospitable friendly people filled with a zest of life.



Big Vishwa Ventura group bring you their latest project, "La Parla", a scheme of exclusive 1 and 2 bedroom apartments at Socorro - Goa.

Ideally located in Socorro, an idyllic village in North Goa, close to Porvorim and just 10 minutes drive from the capital city of Panjim.

Nestled in the lap of greenery, surrounded by paddy fields, the scheme is the perfect hideaway, far from the hustle bustle of city life and yet close to all urban amenities and necessities like market places, banks, restaurants, educational institutions.

The famous beaches of North Goa, like Calangute, Baga, Anjuna etc.. at all within a radius of 10km from the Project.

The project successfully embodies tranquility with serene surroundings and strives to give you peace which true to its name "La Parla" meaning "Peace of mind"



Leisure

- Gated complex
- Vastu perfect
- Swimming pool
- Gardening
- Health club
- Landscaped park

Services

- Maintenance service
- Power backup for all common areas and lift
- Garbage collection and disposal
- In-house daily shopping needs
- CCTV surveillance in common areas
- Ample water supply

Specifications

Structure :

Earthquake resistance Structure
23 cm thick external walls and 11.5 cm thick partition walls

Doors/ Windows :

Main door with double door including safety door
Internal door in hardwood/skin moulded shutter/flush door with lacquer finish
Latch lock on main door for security purpose
All doors of 8 feet height.
Aluminium sliding windows.
Vitrified tiles 600x600 mm in all living & bed rooms.
Anti-skid tiles in bathrooms and kitchens
Kota stone in staircase area

Wall finish :

Textured paint/long lasting paint finish on external façade
Premium quality oil bound distemper on all walls.

Bathrooms :

Branded sanitary ware of Parryware/Hindware or equivalent
Vanity counter with granite top and high quality fixtures
Designer branded C.P. fittings
8 feet height wall tiles and non-skid floor tiles

Kitchen :

Granite counter top with rounded edges
Stainless steel sink with drain board
Designer branded C.P. fittings
Designer ceramic tiles upto two feet above counter top.
ISI approved electricity cables in concealed PVC conduit pipes

Electricals :

Branded ISI approved designer modular switchgears
ISI approved telephone and TV cables in living room and bedrooms
Light fittings (ceiling/wall) in all indoor and outdoor areas
Branded ISI approved ceiling fans and exhaust fans

Ventilation :

Exhaust fan in kitchen and bathrooms
All external doors and parts of external windows shall be open-able.

Lift :

Otis/schindler/Johnson make in each block

Accessories :

Fans, exhaust fans, tube lights, air conditioner, geyser, fixed in appropriate places.



Location map



Panjim City.....	7 km
Mapusa City.....	5 km
Dabolim International Airport.....	35 km
Thivim Railway station.....	14 km
Karmail Railway station.....	20 km
Calangute/ Baga / Candolim Beach.....	10 km

Scheme Layout

Designed in Indo Portuguese style of architecture, the signature architectural style of Goa.



Block A

Block B



Homes which give a sense of space and privacy!

Block B



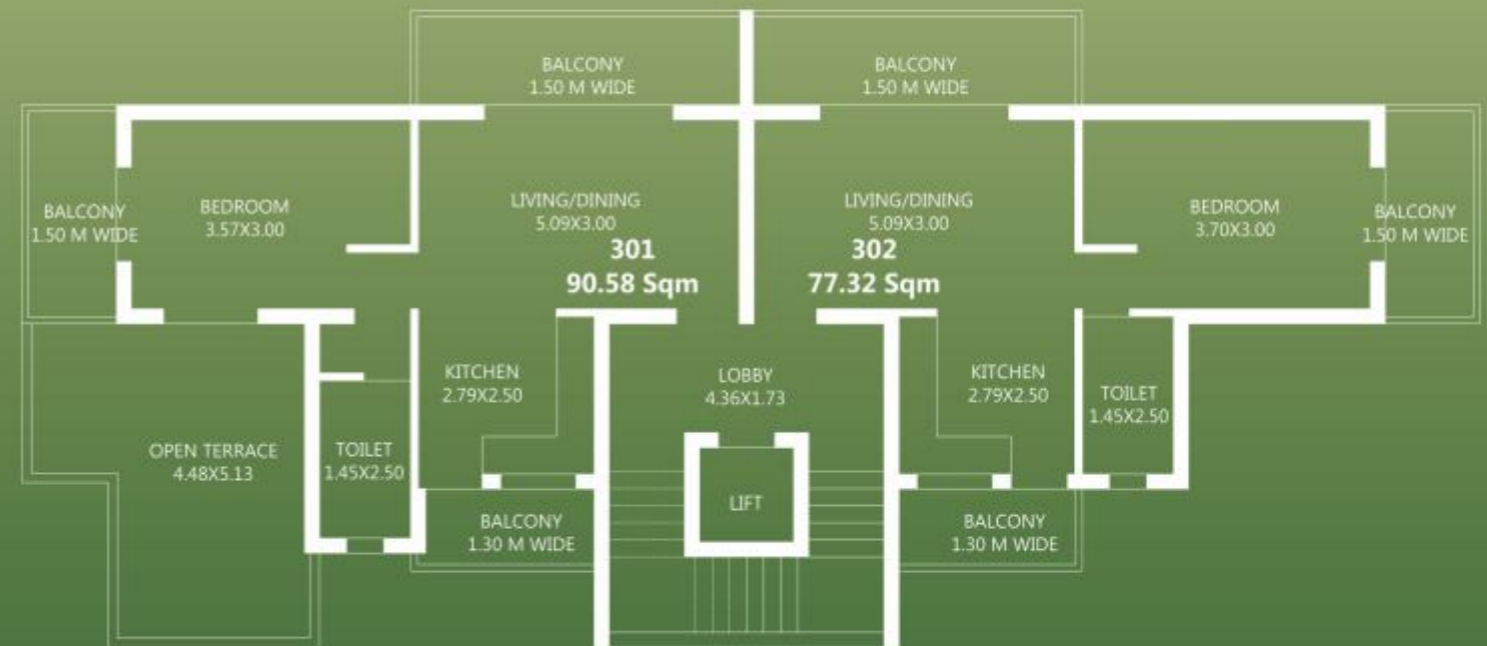
Two Bedroom Apartment



One Bedroom Apartment



Typical Upper ground, First & Second floor plan



Third floor plan

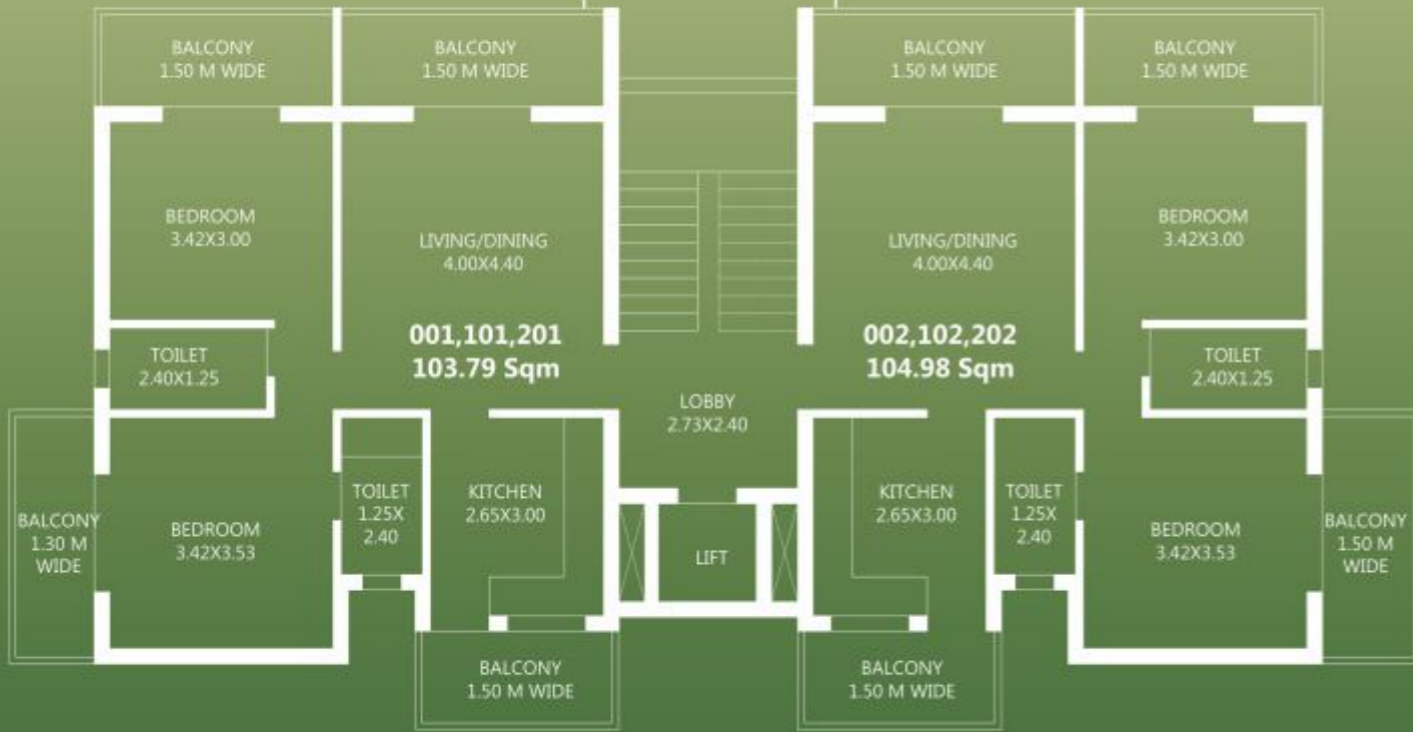
Block A



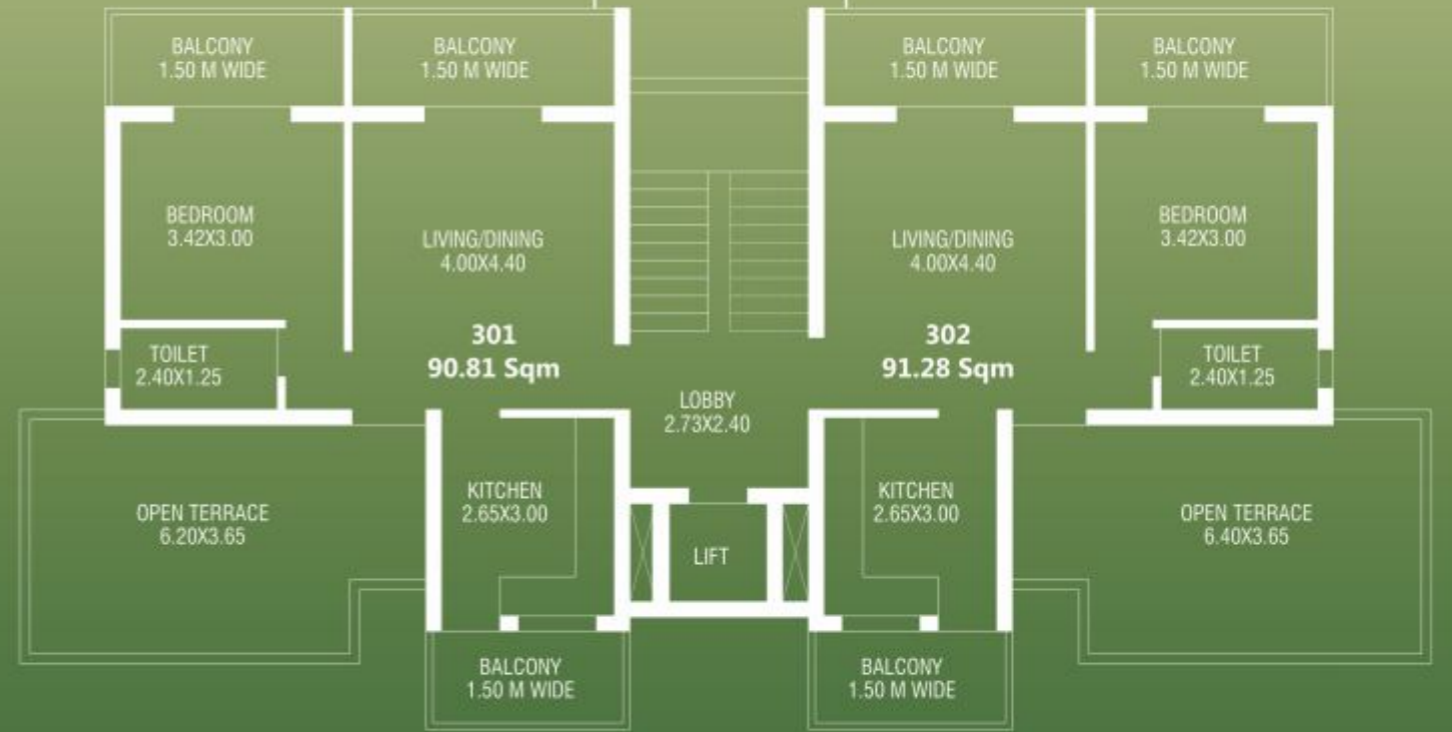
Two Bedroom Apartment



One Bedroom Apartment With Open Terrace



Typical Upper ground, First & Second floor plan



Third floor plan

Block C & D



Discover your ideal holiday home in Goa, experience resort style living!

Clubhouse with a well equipped gymnasium, swimming pool and indoor games



Clubhouse and Pool area

Block C

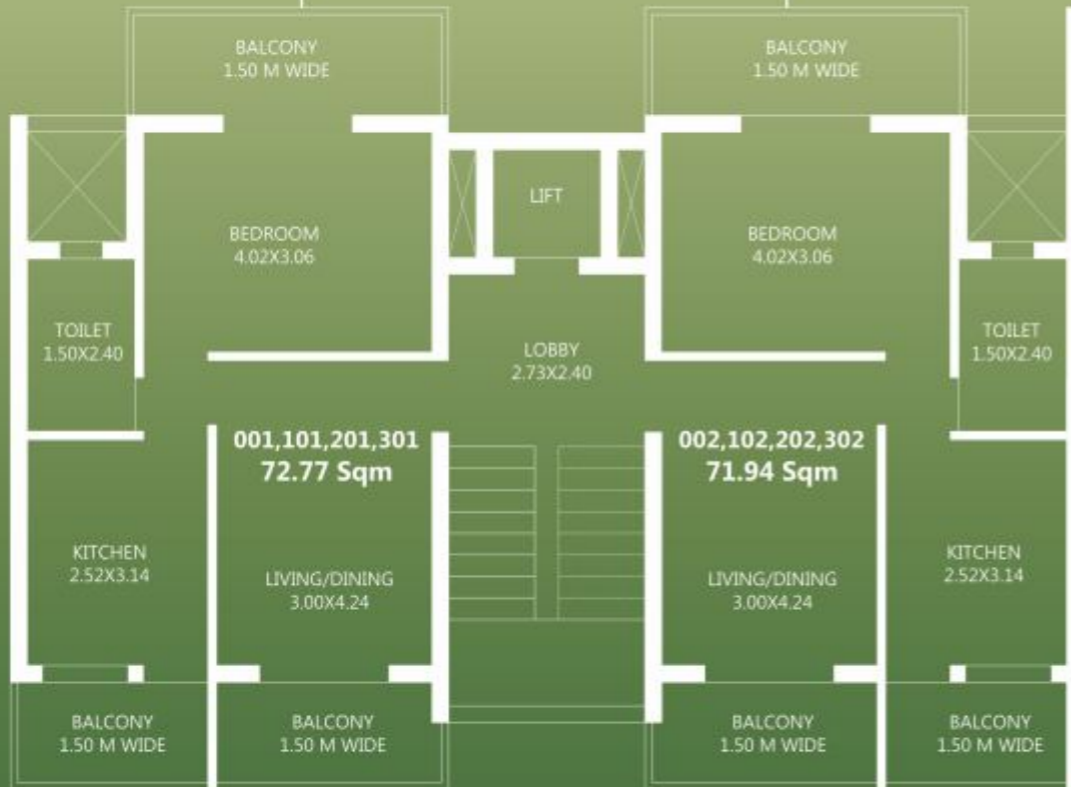


One Bedroom Apartment

Block D



One Bedroom Apartment



Typical Upper ground, First & Second floor plan



Typical Upper ground, First & Second floor plan

The logo for BIG VISHWA ventura group features the text 'BIG VISHWA' in a large, bold, sans-serif font. The letter 'V' is stylized with a white building icon inside its upper right portion. Below 'BIG VISHWA', the words 'ventura group' are written in a smaller, lowercase, sans-serif font.

BIG VISHWA
ventura group

910/1, " Brahmishtha", Gopal Nagar, Porvorim, Bradez - Goa 403521

Phone : 0832-2411568, 0 9967970134, 0 9310017501 E- sudhirtengshe@rediffmail.com

Branch Office : A-003, Padman Nagar, Virar - Agashi Road, Agashi, Virar-W, Thane-401303

Tel.: 02502589507 Email : vishwagroupvirar@gmail.com

www.bigventura.in