



**SPICA**  
*Elegante*  
Sangolda, Goa

A breathtaking home, in a serene, lush green surrounding

The logo for SPICA Elegante, featuring the word 'SPICA' in a bold, green, serif font with a blue wave-like graphic above the 'A', and 'Elegante' in a green, cursive script font below it.

Sangolda, Goa

Spica Elegante, housing project coming up in heart of Sangolda, Goa with a mission to provide comfortable and convenient apartments for you in a scenic village of sangolda situated in Bardez taluka of North Goa. It is situated close to Porvorim and around 8 km from the capital city of Panaji.

Also closer to famous Calagute and Baga Beach.

Cool breezy Sangolda village is covered with lots of coconut trees, paddy fields, and with beautiful churches, temples, around, plus reputed high schools and lovely restaurants.

### Specifications:

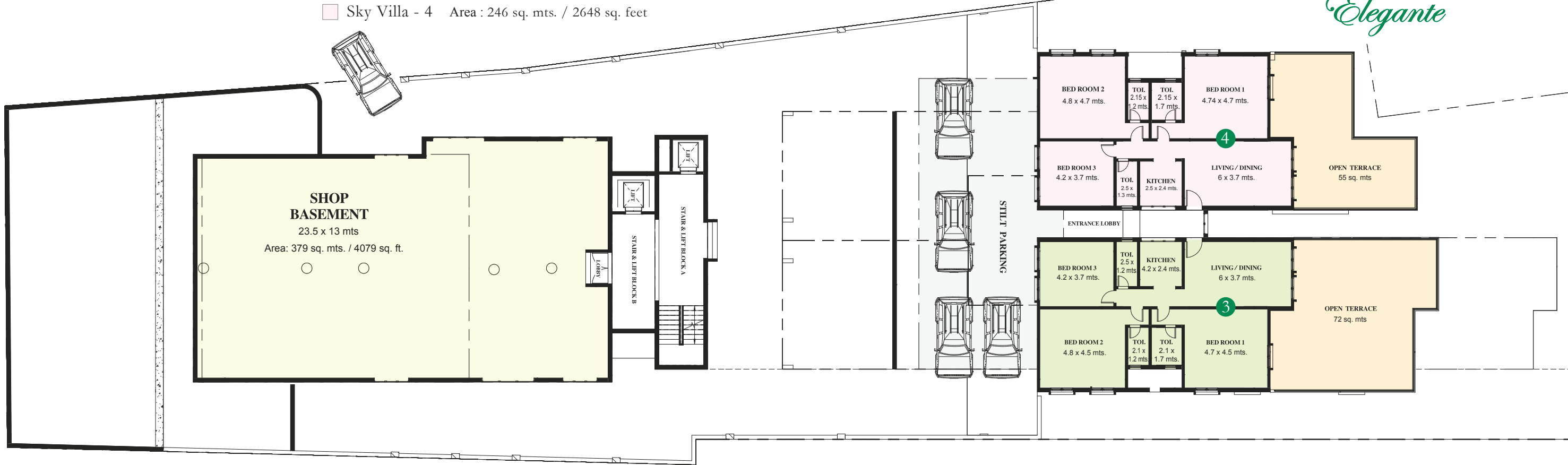
- Premium quality vitrified tiles or equivalent flooring and skirting
- Acrylic emulsion paint
- Video door phone
- Power backup for lift and common areas
- Granite platform with stainless steel sink and drainboard
- Ceramic tiles dado upto 2 feet above counter
- Provision for split air conditioners in living, dining and all bedrooms.
- Telephone point in living room
- Concealed wiring
- Adequate power points in the entire apartment.
- Ceramic tiles or equivalent flooring and dado in all toilets.
- Storage water heater
- Exhaust fan
- Superior quality sanitary fixtures
- CP fittings of jaguar or equivalent
- Glass partition in shower area
- Main door with veneer finish from both sides.
- Internal doors, flush doors with laminated finish.
- Wooden windows for heritage look.
- Granite cill for windows.

• The Images shown in this brochure are for visual representation only. The particulars are prepared with all due care for the convenience of the intending purchasers but the information provided is intended as a preliminary guide and does not form part of any legal contract. The developer reserves the right to vary the drawing and specification as necessary to complete the works.



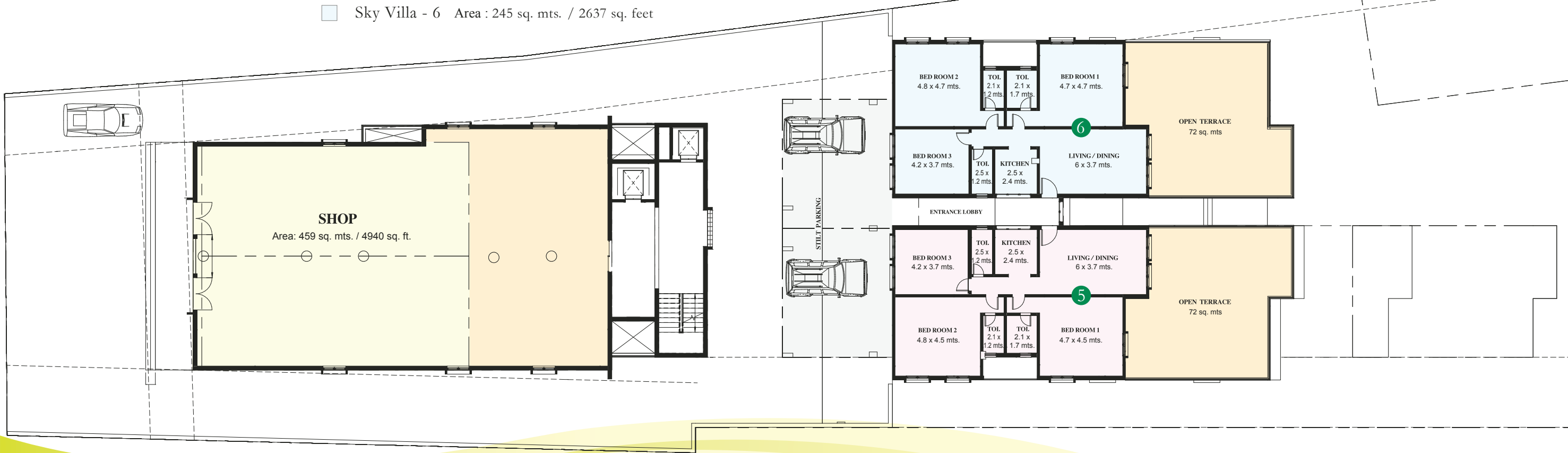
■ Sky Villa - 3 Area : 238 sq. mts. / 2562 sq. feet

■ Sky Villa - 4 Area : 246 sq. mts. / 2648 sq. feet

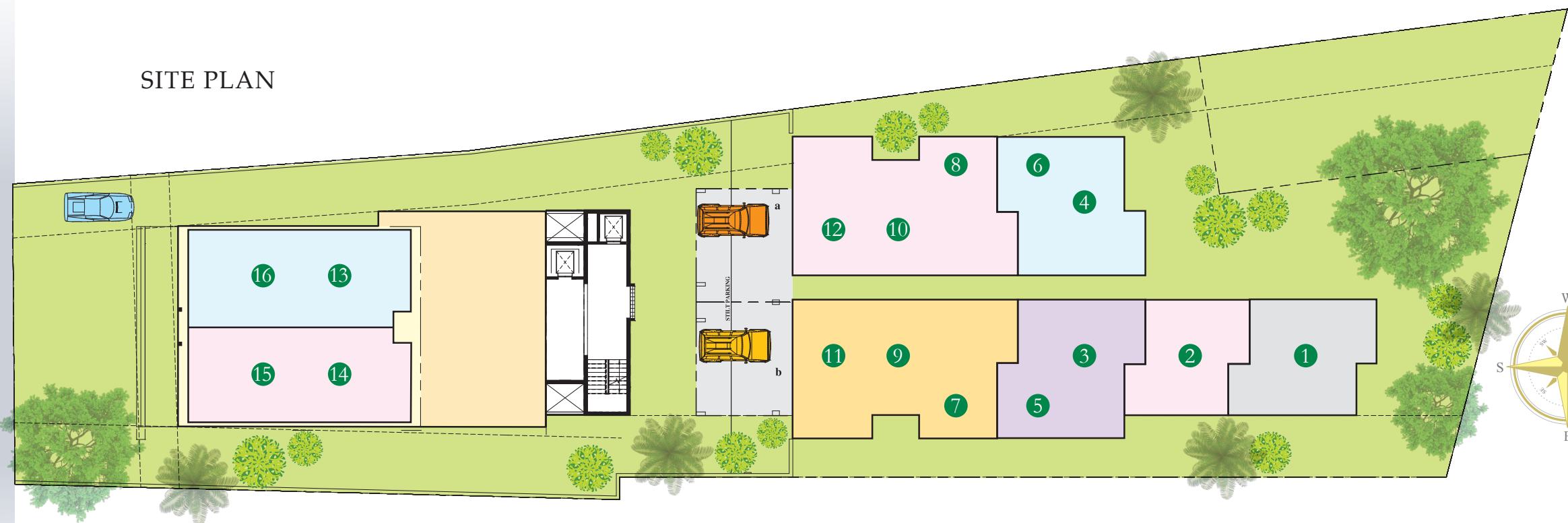


■ Sky Villa - 5 Area : 248 sq. mts. / 2669 sq. feet

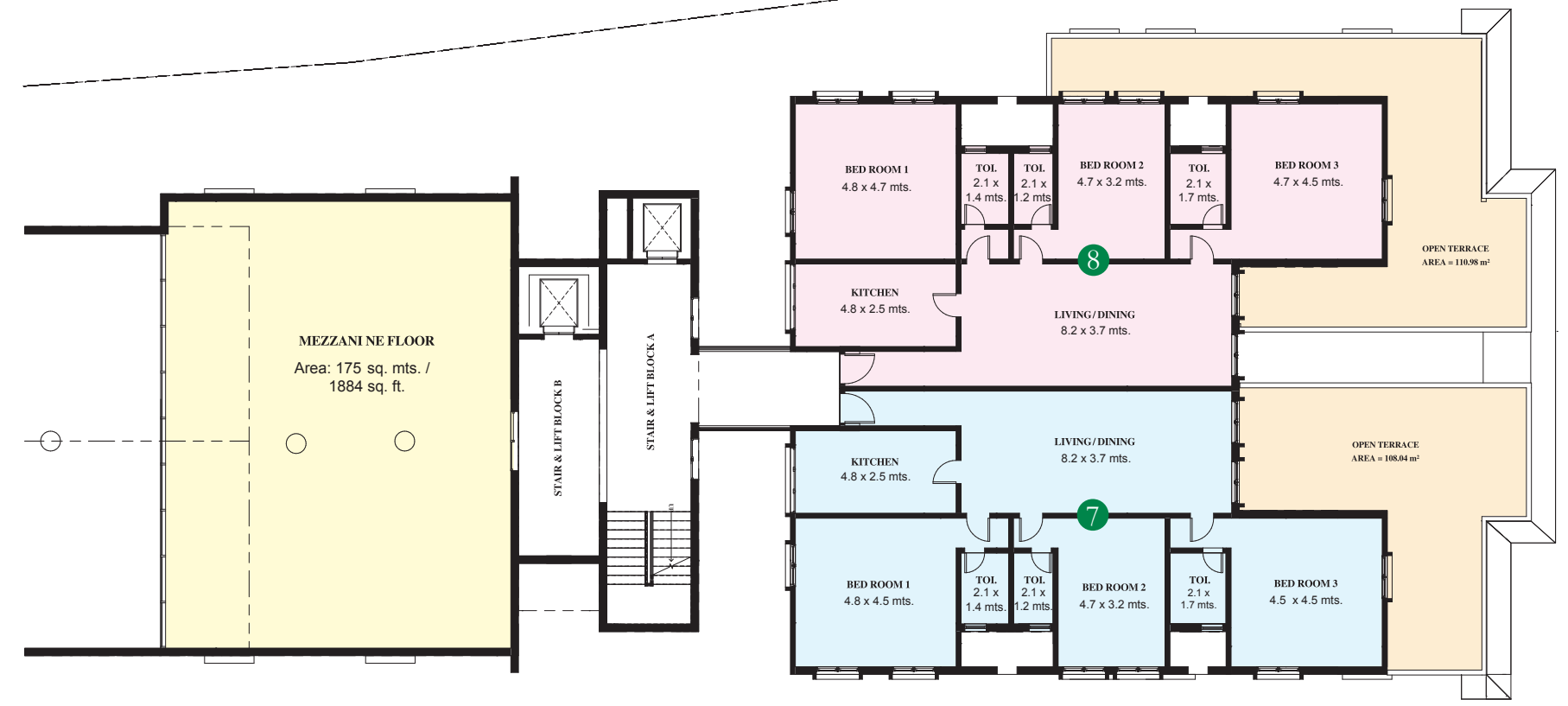
■ Sky Villa - 6 Area : 245 sq. mts. / 2637 sq. feet



SITE PLAN



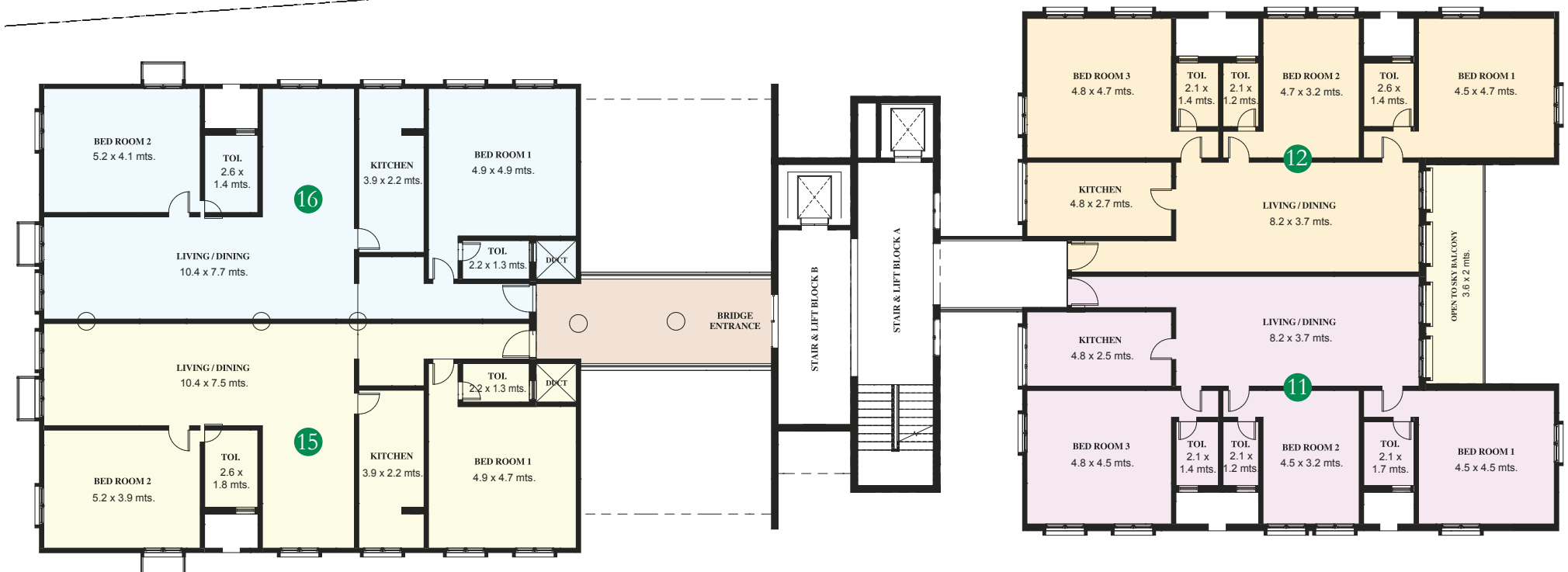
- Terrace House - 7 Area : 234 sq. mts. / 2519 sq. feet
- Terrace House - 8 Area : 243 sq. mts. / 2615 sq. feet





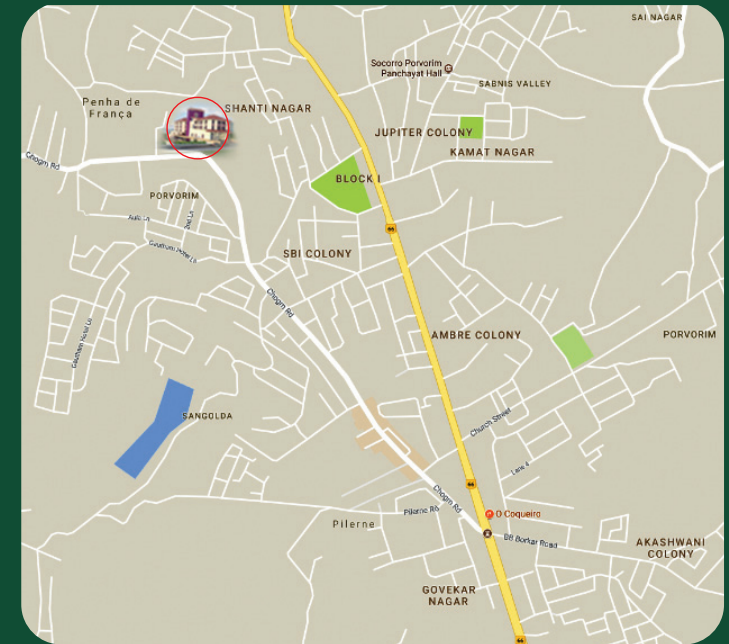
Apartment - 9	213 sq. mts.	2293 sq. feet
Apartment - 10	211 sq. mts.	2271 sq. feet
Apartment - 13	238 sq. mts.	2562 sq. feet
Apartment - 14	234 sq. mts.	2519 sq. feet

Apartment - 11	215 sq. mts.	2314 sq. feet
Apartment - 12	213 sq. mts.	2293 sq. feet
Apartment - 15	213 sq. mts.	2293 sq. feet
Apartment - 16	209 sq. mts.	2250 sq. feet





## LOCATION



For Bookings Contact :

**Girish Mahale**

F-2, Gokul Residency, Gurudwara Rd.

Alto Betim, Goa

Tel.: 0832 2413707 Mob.: +91 922 590 7654

Email: spicagoa@gmail.com

**Kirti Nerleker**

Office-19, 2nd floor, Swaroop Plaza,

Shukrawar Peth, Tilakwadi, Belgaum,

Karnataka, India.

Tel.: 0831 2461300 Mob.: +91 984 557 2707

**SPICA**  
*Elegante*  
Sangolda, Goa