



TOTAL AREA STATEMENT :- Block A,B,C TO G,F,G & H

FLOORS	TOTAL B.U.A (sq.m.)	TOTAL AREA FREE OF F.A.R.	GROSS F.A.R (sq.m.)	LESS ADDITIONAL F.A.R 7.5%	NET F.A.R (sq.m.)
BASEMENT FLOOR	15290.00	15290.00	0.00	0.00	0.00
STILT FLOOR	7752.06	7241.82	510.24	323.81	186.43
GROUND FLOOR	104.00	9.00	95.00	0.00	95.00
1ST FLOOR	7004.80	1966.22	5438.58	228.82	5209.76
2ND FLOOR	7744.68	2095.51	5649.17	228.82	5420.35
3RD FLOOR	7744.68	2095.51	5649.17	228.82	5420.35
4TH FLOOR	7744.68	2095.51	5649.17	228.82	5420.35
5TH FLOOR	7744.68	2095.51	5649.17	228.82	5420.35
6TH FLOOR	7744.68	2095.51	5649.17	228.82	5420.35
7TH FLOOR	7744.68	2095.51	5649.17	228.82	5420.35
8TH FLOOR	7778.57	2104.79	5673.78	228.82	5444.96
SECURITY CABIN	6.00	0.00	6.00	0.00	6.00
NET TOTAL	84,403.51	38784.89	45618.62	2160.37	43,458.25

SITE PLAN SCALE - 1:500

PRKING REQUIRED :-

TYPE	FLATS	TYPE	CARS
BLOCK A	32	STILT PARKING	
BLOCK B	106	BLOCK A	16
BLOCK C	256	BLOCK B	57
BLOCK F	32	BLOCK C - C7	12 X 8 - 96
BLOCK G	128	BLOCK F	16
TOTAL FLATS	554	BLOCK G	36
BLOCK H (104/0/50/30/30)		BASEMENT	508
TOTAL (554+3) = 557 CARS		SURFACE	43
		TOTAL	772 CARS

PRKING PROVIDED :-

TYPE	CARS
BLOCK A	16
BLOCK B	57
BLOCK C - C7	12 X 8 - 96
BLOCK F	16
BLOCK G	36
BASEMENT	508
SURFACE	43
TOTAL	772 CARS

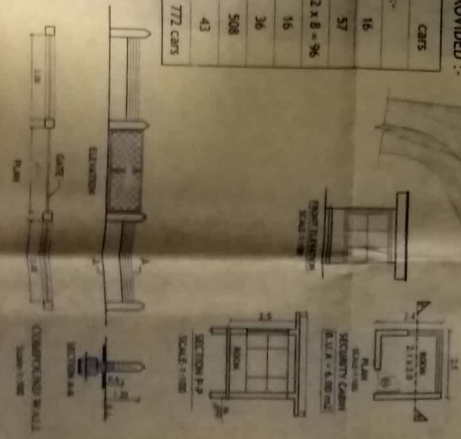
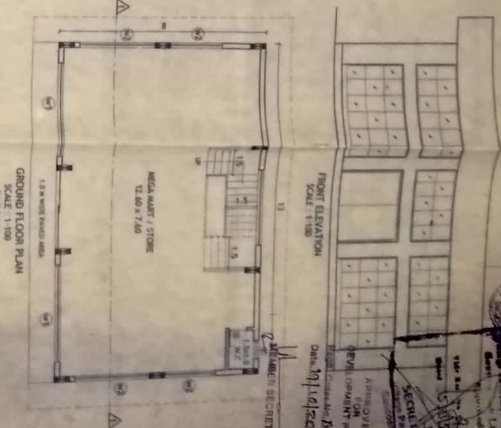
AREA STATEMENT

a) PLOT AREA	2340.00 m ²
b) AREA UNDER ROAD WIDENING	1031.00 m ²
c) NET PLOT AREA	2178.00 m ²
d) REQUIRED OPEN SPACE (15%)	326.70 m ²
e) PROVIDED OPEN SPACE	3270.00 m ²
f) PERMISSIBLE COVERED AREA (40%)	870.00 m ²
g) PERMISSIBLE FAR (2.00)	4680.00 m ²
h) PROPOSED COVERED AREA	7856.06 m ²
i) PROPOSED COVERAGE	36.09 %
j) PROPOSED F.A.R	43468.25 m ²
k) F.A.R CONSUMED	1.85

TOTAL BUILT UP AREA FOR INFRASTRUCTURE TAX = 63,000.00 m²
(84403.51 + 72.015 * POOL + 21475.87 * PARKING)

AREA STATEMENT :- BLOCK - H

FLOORS	TOTAL B.U.A (sq.m.)	STAIRS/LIFT (sq.m.)	BALCONY (sq.m.)	TERRACE PARKING (sq.m.)	GROSS F.A.R (sq.m.)	LESS ADDITIONAL F.A.R 7.5%	NET F.A.R (sq.m.)
GROUND/FLOOR	104.00	9.00	0.00	0.00	95.00	0.00	95.00
TOTAL	104.00	9.00	0.00	0.00	95.00	0.00	95.00



REFER NO:- MPDA/7-U-4/12-13/1899

SITE PLAN

PROPOSED REVISION ON PLOT SEATING
ST NO: 508 BIV NO: 21117/A, AT SANKRALI
VILLAGE, MUMBAI ROAD TALUKA, GD.

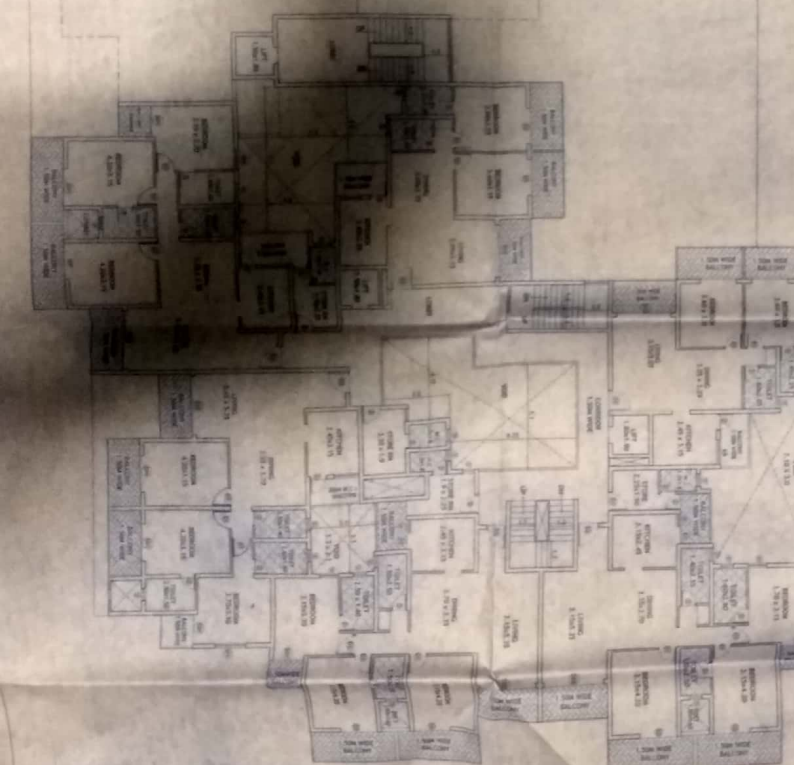
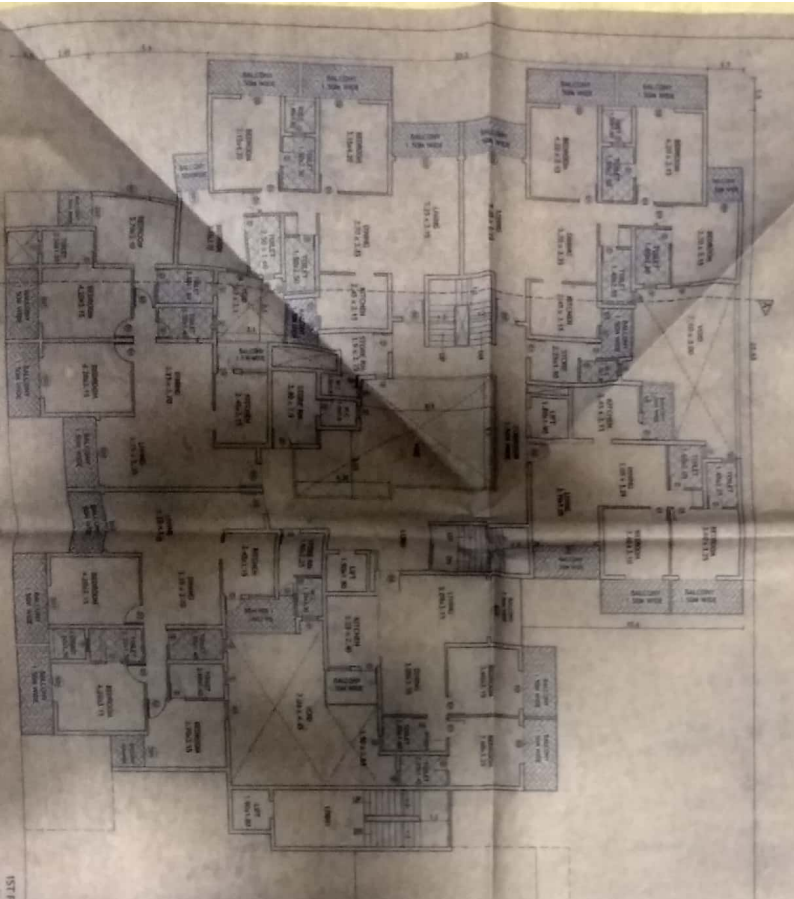
M/S UNIVA HOLDINGS PVT LTD
Solely for
Site Plan, Area Statement
Block and Floor Plans

By: *[Signature]*
Suresh Suresh
48/1001/2010

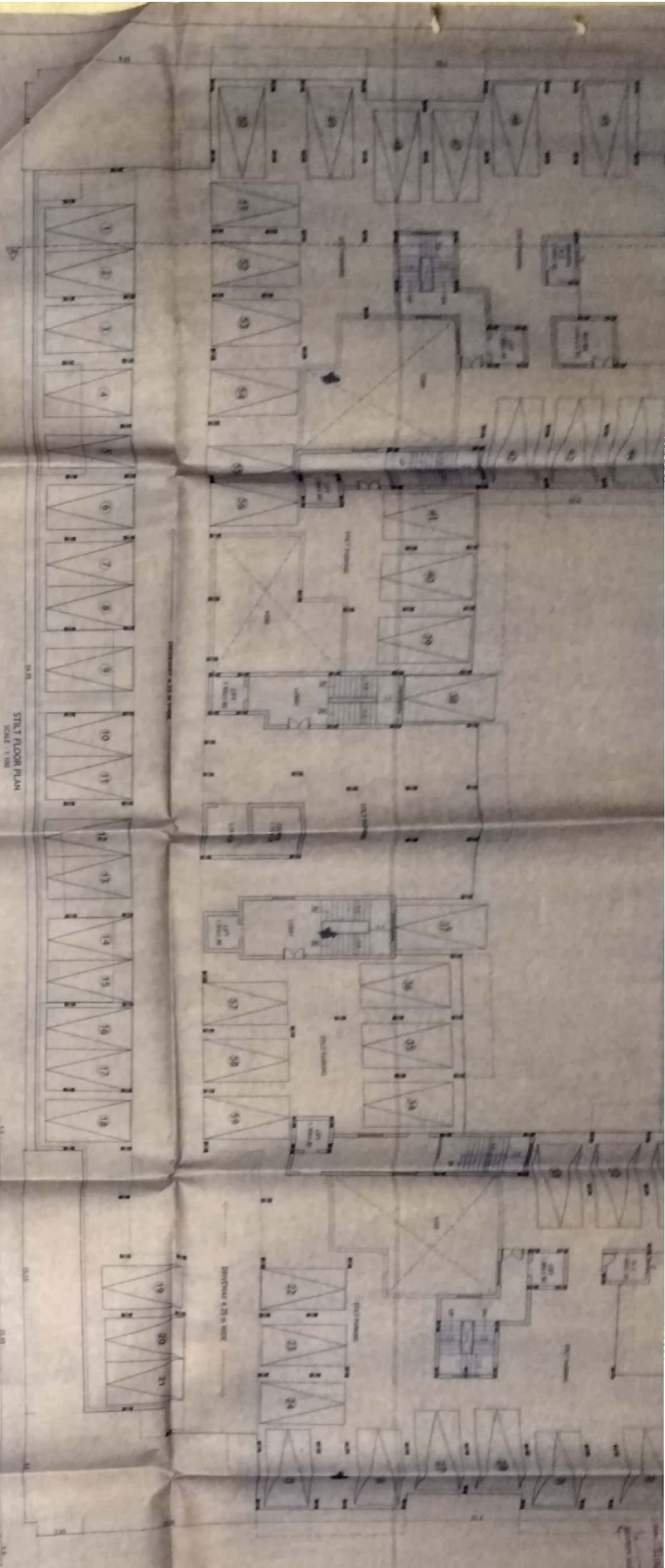
SURESH SURESH
48/1001/2010

Stamp: *[Official Stamp]*
Date: 11/11/2010
9:30

1ST FL. DR PLAN



5TH FLOOR PLAN



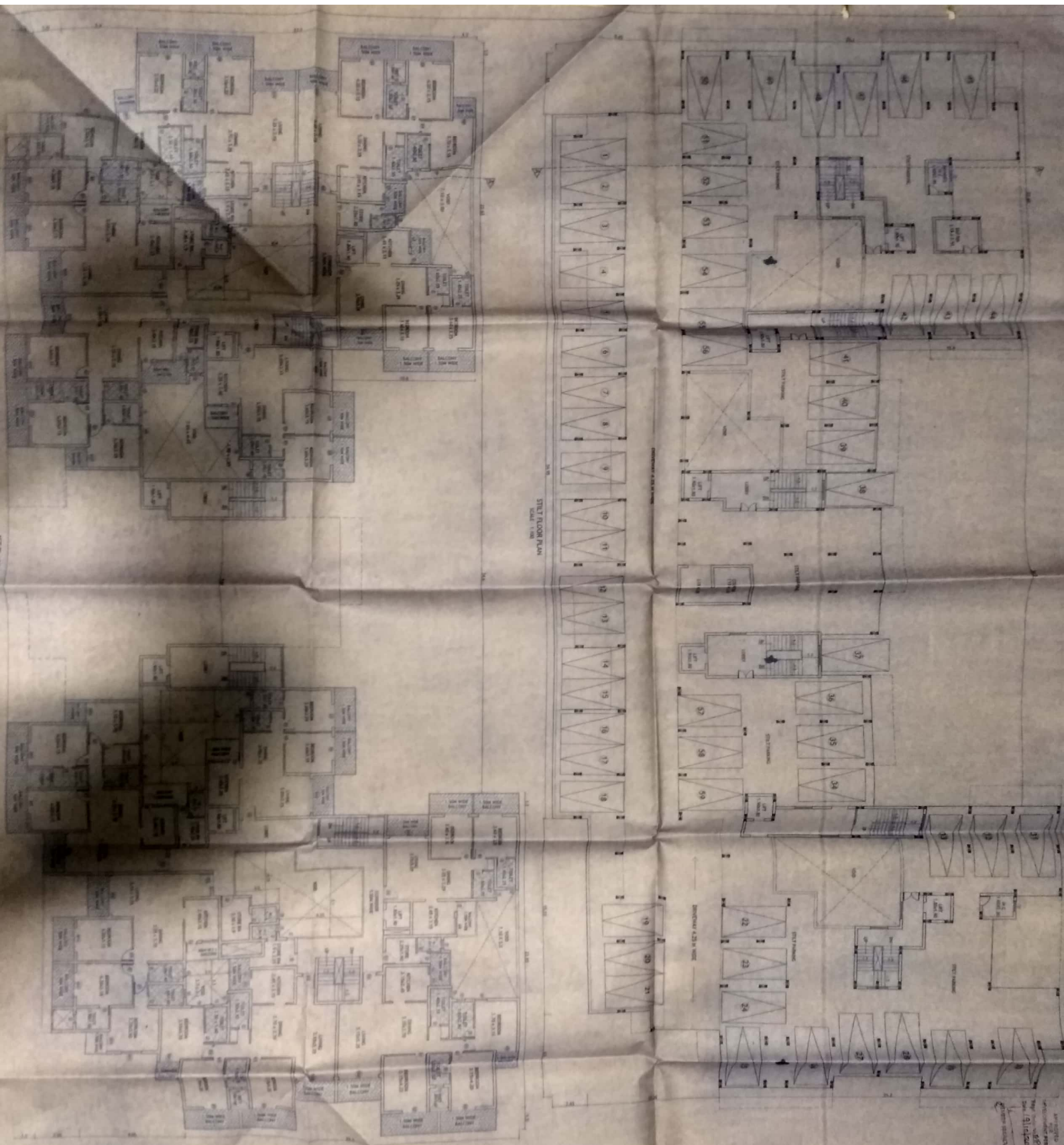
BLOCK 'B'

PROPOSED REVISION FOR PLAT RELIANCE
 IS AS SHOWN ON THIS SET. ALL DIMENSIONS
 SHALL BE AS SHOWN ON THIS SET.
 M. S. UMMA HOODINGS PVT. LTD.

Scale: 1:100
 1ST FL. DR PLAN
 5TH FLOOR PLAN

Sona
 Chartered Engineer
 SOANES & ASSOCIATES
 101, 102, 103, 104, 105, 106, 107, 108, 109, 110, 111, 112, 113, 114, 115, 116, 117, 118, 119, 120, 121, 122, 123, 124, 125, 126, 127, 128, 129, 130, 131, 132, 133, 134, 135, 136, 137, 138, 139, 140, 141, 142, 143, 144, 145, 146, 147, 148, 149, 150, 151, 152, 153, 154, 155, 156, 157, 158, 159, 160, 161, 162, 163, 164, 165, 166, 167, 168, 169, 170, 171, 172, 173, 174, 175, 176, 177, 178, 179, 180, 181, 182, 183, 184, 185, 186, 187, 188, 189, 190, 191, 192, 193, 194, 195, 196, 197, 198, 199, 200, 201, 202, 203, 204, 205, 206, 207, 208, 209, 210, 211, 212, 213, 214, 215, 216, 217, 218, 219, 220, 221, 222, 223, 224, 225, 226, 227, 228, 229, 230, 231, 232, 233, 234, 235, 236, 237, 238, 239, 240, 241, 242, 243, 244, 245, 246, 247, 248, 249, 250, 251, 252, 253, 254, 255, 256, 257, 258, 259, 260, 261, 262, 263, 264, 265, 266, 267, 268, 269, 270, 271, 272, 273, 274, 275, 276, 277, 278, 279, 280, 281, 282, 283, 284, 285, 286, 287, 288, 289, 290, 291, 292, 293, 294, 295, 296, 297, 298, 299, 300, 301, 302, 303, 304, 305, 306, 307, 308, 309, 310, 311, 312, 313, 314, 315, 316, 317, 318, 319, 320, 321, 322, 323, 324, 325, 326, 327, 328, 329, 330, 331, 332, 333, 334, 335, 336, 337, 338, 339, 340, 341, 342, 343, 344, 345, 346, 347, 348, 349, 350, 351, 352, 353, 354, 355, 356, 357, 358, 359, 360, 361, 362, 363, 364, 365, 366, 367, 368, 369, 370, 371, 372, 373, 374, 375, 376, 377, 378, 379, 380, 381, 382, 383, 384, 385, 386, 387, 388, 389, 390, 391, 392, 393, 394, 395, 396, 397, 398, 399, 400, 401, 402, 403, 404, 405, 406, 407, 408, 409, 410, 411, 412, 413, 414, 415, 416, 417, 418, 419, 420, 421, 422, 423, 424, 425, 426, 427, 428, 429, 430, 431, 432, 433, 434, 435, 436, 437, 438, 439, 440, 441, 442, 443, 444, 445, 446, 447, 448, 449, 450, 451, 452, 453, 454, 455, 456, 457, 458, 459, 460, 461, 462, 463, 464, 465, 466, 467, 468, 469, 470, 471, 472, 473, 474, 475, 476, 477, 478, 479, 480, 481, 482, 483, 484, 485, 486, 487, 488, 489, 490, 491, 492, 493, 494, 495, 496, 497, 498, 499, 500, 501, 502, 503, 504, 505, 506, 507, 508, 509, 510, 511, 512, 513, 514, 515, 516, 517, 518, 519, 520, 521, 522, 523, 524, 525, 526, 527, 528, 529, 530, 531, 532, 533, 534, 535, 536, 537, 538, 539, 540, 541, 542, 543, 544, 545, 546, 547, 548, 549, 550, 551, 552, 553, 554, 555, 556, 557, 558, 559, 560, 561, 562, 563, 564, 565, 566, 567, 568, 569, 570, 571, 572, 573, 574, 575, 576, 577, 578, 579, 580, 581, 582, 583, 584, 585, 586, 587, 588, 589, 590, 591, 592, 593, 594, 595, 596, 597, 598, 599, 600, 601, 602, 603, 604, 605, 606, 607, 608, 609, 610, 611, 612, 613, 614, 615, 616, 617, 618, 619, 620, 621, 622, 623, 624, 625, 626, 627, 628, 629, 630, 631, 632, 633, 634, 635, 636, 637, 638, 639, 640, 641, 642, 643, 644, 645, 646, 647, 648, 649, 650, 651, 652, 653, 654, 655, 656, 657, 658, 659, 660, 661, 662, 663, 664, 665, 666, 667, 668, 669, 670, 671, 672, 673, 674, 675, 676, 677, 678, 679, 680, 681, 682, 683, 684, 685, 686, 687, 688, 689, 690, 691, 692, 693, 694, 695, 696, 697, 698, 699, 700, 701, 702, 703, 704, 705, 706, 707, 708, 709, 710, 711, 712, 713, 714, 715, 716, 717, 718, 719, 720, 721, 722, 723, 724, 725, 726, 727, 728, 729, 730, 731, 732, 733, 734, 735, 736, 737, 738, 739, 740, 741, 742, 743, 744, 745, 746, 747, 748, 749, 750, 751, 752, 753, 754, 755, 756, 757, 758, 759, 760, 761, 762, 763, 764, 765, 766, 767, 768, 769, 770, 771, 772, 773, 774, 775, 776, 777, 778, 779, 780, 781, 782, 783, 784, 785, 786, 787, 788, 789, 790, 791, 792, 793, 794, 795, 796, 797, 798, 799, 800, 801, 802, 803, 804, 805, 806, 807, 808, 809, 810, 811, 812, 813, 814, 815, 816, 817, 818, 819, 820, 821, 822, 823, 824, 825, 826, 827, 828, 829, 830, 831, 832, 833, 834, 835, 836, 837, 838, 839, 840, 841, 842, 843, 844, 845, 846, 847, 848, 849, 850, 851, 852, 853, 854, 855, 856, 857, 858, 859, 860, 861, 862, 863, 864, 865, 866, 867, 868, 869, 870, 871, 872, 873, 874, 875, 876, 877, 878, 879, 880, 881, 882, 883, 884, 885, 886, 887, 888, 889, 890, 891, 892, 893, 894, 895, 896, 897, 898, 899, 900, 901, 902, 903, 904, 905, 906, 907, 908, 909, 910, 911, 912, 913, 914, 915, 916, 917, 918, 919, 920, 921, 922, 923, 924, 925, 926, 927, 928, 929, 930, 931, 932, 933, 934, 935, 936, 937, 938, 939, 940, 941, 942, 943, 944, 945, 946, 947, 948, 949, 950, 951, 952, 953, 954, 955, 956, 957, 958, 959, 960, 961, 962, 963, 964, 965, 966, 967, 968, 969, 970, 971, 972, 973, 974, 975, 976, 977, 978, 979, 980, 981, 982, 983, 984, 985, 986, 987, 988, 989, 990, 991, 992, 993, 994, 995, 996, 997, 998, 999, 1000





STAIR FLOOR PLAN
 SCALE: 1/8" = 1'-0"

BLOCK 8

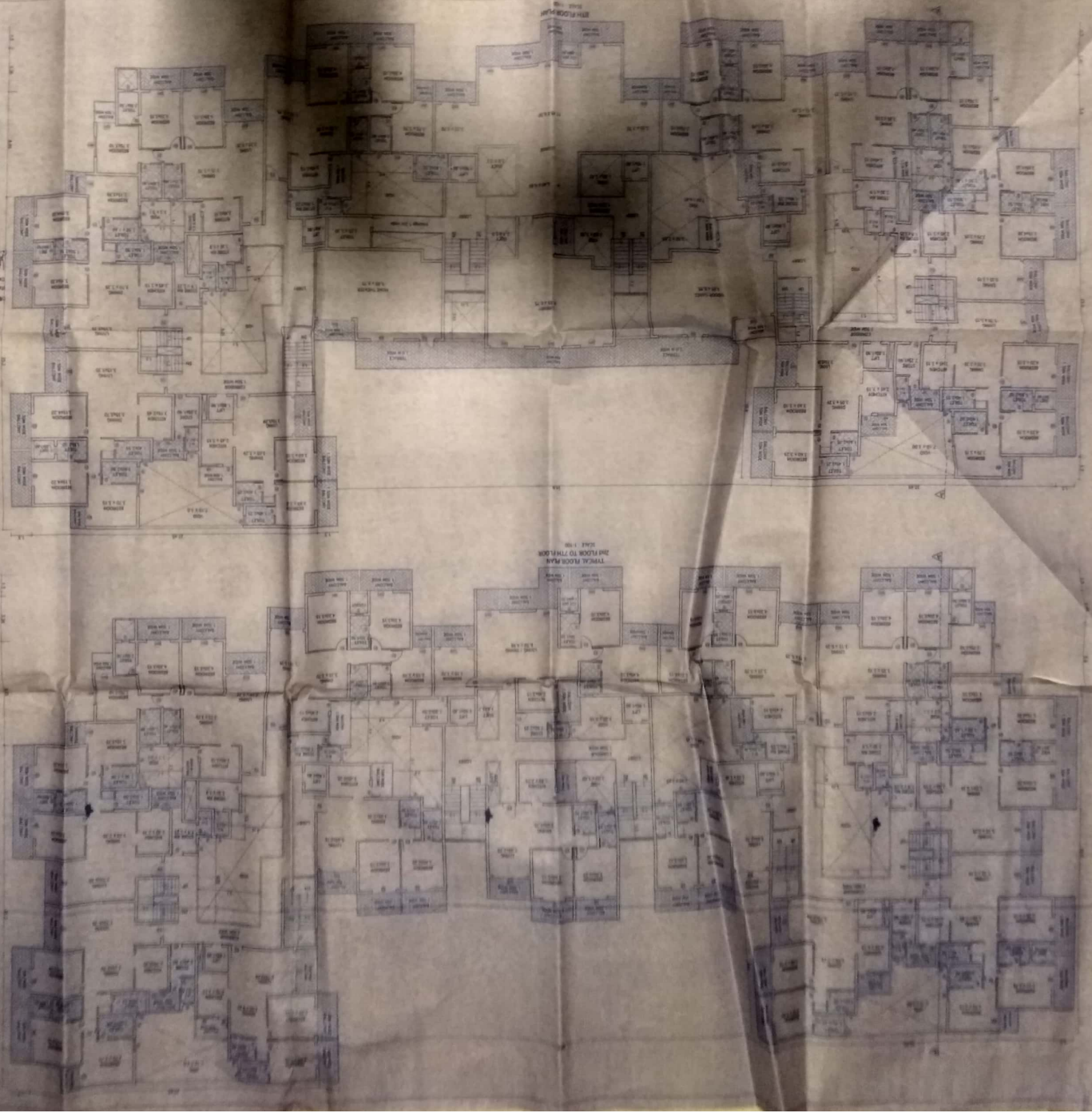
Block 8
 1455 LINDEN BOULEVARD, S.W.
 ATLANTA, GEORGIA 30310
 404-525-1111
 404-525-1112
 404-525-1113
 404-525-1114
 404-525-1115
 404-525-1116
 404-525-1117
 404-525-1118
 404-525-1119
 404-525-1120
 404-525-1121
 404-525-1122
 404-525-1123
 404-525-1124
 404-525-1125
 404-525-1126
 404-525-1127
 404-525-1128
 404-525-1129
 404-525-1130
 404-525-1131
 404-525-1132
 404-525-1133
 404-525-1134
 404-525-1135
 404-525-1136
 404-525-1137
 404-525-1138
 404-525-1139
 404-525-1140
 404-525-1141
 404-525-1142
 404-525-1143
 404-525-1144
 404-525-1145
 404-525-1146
 404-525-1147
 404-525-1148
 404-525-1149
 404-525-1150
 404-525-1151
 404-525-1152
 404-525-1153
 404-525-1154
 404-525-1155
 404-525-1156
 404-525-1157
 404-525-1158
 404-525-1159
 404-525-1160
 404-525-1161
 404-525-1162
 404-525-1163
 404-525-1164
 404-525-1165
 404-525-1166
 404-525-1167
 404-525-1168
 404-525-1169
 404-525-1170
 404-525-1171
 404-525-1172
 404-525-1173
 404-525-1174
 404-525-1175
 404-525-1176
 404-525-1177
 404-525-1178
 404-525-1179
 404-525-1180
 404-525-1181
 404-525-1182
 404-525-1183
 404-525-1184
 404-525-1185
 404-525-1186
 404-525-1187
 404-525-1188
 404-525-1189
 404-525-1190
 404-525-1191
 404-525-1192
 404-525-1193
 404-525-1194
 404-525-1195
 404-525-1196
 404-525-1197
 404-525-1198
 404-525-1199
 404-525-1200

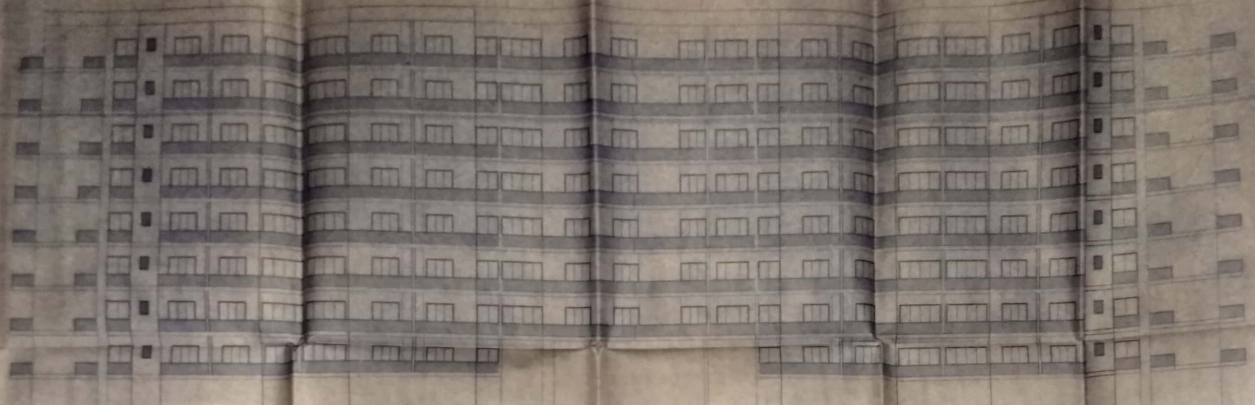


404-525-1111
 404-525-1112
 404-525-1113
 404-525-1114
 404-525-1115
 404-525-1116
 404-525-1117
 404-525-1118
 404-525-1119
 404-525-1120
 404-525-1121
 404-525-1122
 404-525-1123
 404-525-1124
 404-525-1125
 404-525-1126
 404-525-1127
 404-525-1128
 404-525-1129
 404-525-1130
 404-525-1131
 404-525-1132
 404-525-1133
 404-525-1134
 404-525-1135
 404-525-1136
 404-525-1137
 404-525-1138
 404-525-1139
 404-525-1140
 404-525-1141
 404-525-1142
 404-525-1143
 404-525-1144
 404-525-1145
 404-525-1146
 404-525-1147
 404-525-1148
 404-525-1149
 404-525-1150
 404-525-1151
 404-525-1152
 404-525-1153
 404-525-1154
 404-525-1155
 404-525-1156
 404-525-1157
 404-525-1158
 404-525-1159
 404-525-1160
 404-525-1161
 404-525-1162
 404-525-1163
 404-525-1164
 404-525-1165
 404-525-1166
 404-525-1167
 404-525-1168
 404-525-1169
 404-525-1170
 404-525-1171
 404-525-1172
 404-525-1173
 404-525-1174
 404-525-1175
 404-525-1176
 404-525-1177
 404-525-1178
 404-525-1179
 404-525-1180
 404-525-1181
 404-525-1182
 404-525-1183
 404-525-1184
 404-525-1185
 404-525-1186
 404-525-1187
 404-525-1188
 404-525-1189
 404-525-1190
 404-525-1191
 404-525-1192
 404-525-1193
 404-525-1194
 404-525-1195
 404-525-1196
 404-525-1197
 404-525-1198
 404-525-1199
 404-525-1200

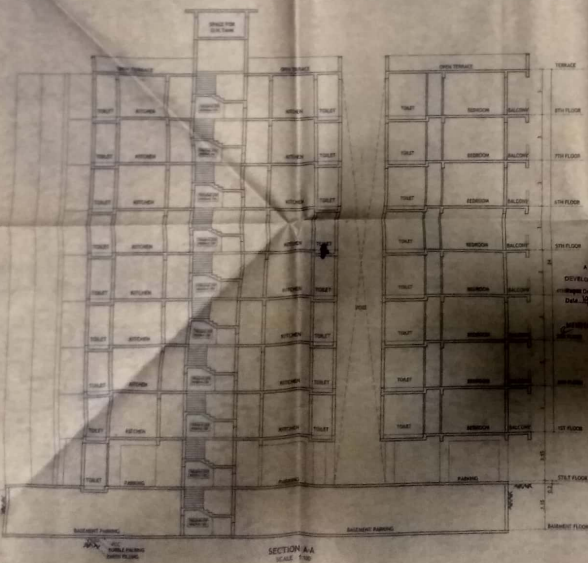
SOARES & ASSOCIATES
ARCHITECTS
1000 WEST 10TH AVENUE
DENVER, COLORADO 80202
PHONE 333-1111
FAX 333-1111
M/S DWYER HOLDINGS PVT LTD
REGISTERED ARCHITECTS IN THE STATE OF COLORADO
REGISTERED ARCHITECTS IN THE STATE OF ILLINOIS
REGISTERED ARCHITECTS IN THE STATE OF MISSOURI
REGISTERED ARCHITECTS IN THE STATE OF NEBRASKA
REGISTERED ARCHITECTS IN THE STATE OF NORTH DAKOTA
REGISTERED ARCHITECTS IN THE STATE OF SOUTH DAKOTA
REGISTERED ARCHITECTS IN THE STATE OF WISCONSIN
REGISTERED ARCHITECTS IN THE STATE OF MINNESOTA
REGISTERED ARCHITECTS IN THE STATE OF IOWA
REGISTERED ARCHITECTS IN THE STATE OF KANSAS
REGISTERED ARCHITECTS IN THE STATE OF OKLAHOMA
REGISTERED ARCHITECTS IN THE STATE OF ARIZONA
REGISTERED ARCHITECTS IN THE STATE OF CALIFORNIA
REGISTERED ARCHITECTS IN THE STATE OF TEXAS
REGISTERED ARCHITECTS IN THE STATE OF NEW MEXICO
REGISTERED ARCHITECTS IN THE STATE OF NEVADA
REGISTERED ARCHITECTS IN THE STATE OF UTAH
REGISTERED ARCHITECTS IN THE STATE OF WYOMING
REGISTERED ARCHITECTS IN THE STATE OF MONTANA
REGISTERED ARCHITECTS IN THE STATE OF IDAHO
REGISTERED ARCHITECTS IN THE STATE OF WASHINGTON
REGISTERED ARCHITECTS IN THE STATE OF OREGON
REGISTERED ARCHITECTS IN THE STATE OF CALIFORNIA
REGISTERED ARCHITECTS IN THE STATE OF TEXAS
REGISTERED ARCHITECTS IN THE STATE OF NEW MEXICO
REGISTERED ARCHITECTS IN THE STATE OF NEVADA
REGISTERED ARCHITECTS IN THE STATE OF UTAH
REGISTERED ARCHITECTS IN THE STATE OF WYOMING
REGISTERED ARCHITECTS IN THE STATE OF MONTANA
REGISTERED ARCHITECTS IN THE STATE OF IDAHO
REGISTERED ARCHITECTS IN THE STATE OF WASHINGTON
REGISTERED ARCHITECTS IN THE STATE OF OREGON

BLOCK B
APPROVED
M/S DWYER HOLDINGS PVT LTD
REGISTERED ARCHITECTS IN THE STATE OF COLORADO
REGISTERED ARCHITECTS IN THE STATE OF ILLINOIS
REGISTERED ARCHITECTS IN THE STATE OF MISSOURI
REGISTERED ARCHITECTS IN THE STATE OF NEBRASKA
REGISTERED ARCHITECTS IN THE STATE OF NORTH DAKOTA
REGISTERED ARCHITECTS IN THE STATE OF SOUTH DAKOTA
REGISTERED ARCHITECTS IN THE STATE OF WISCONSIN
REGISTERED ARCHITECTS IN THE STATE OF MINNESOTA
REGISTERED ARCHITECTS IN THE STATE OF IOWA
REGISTERED ARCHITECTS IN THE STATE OF KANSAS
REGISTERED ARCHITECTS IN THE STATE OF OKLAHOMA
REGISTERED ARCHITECTS IN THE STATE OF ARIZONA
REGISTERED ARCHITECTS IN THE STATE OF CALIFORNIA
REGISTERED ARCHITECTS IN THE STATE OF TEXAS
REGISTERED ARCHITECTS IN THE STATE OF NEW MEXICO
REGISTERED ARCHITECTS IN THE STATE OF NEVADA
REGISTERED ARCHITECTS IN THE STATE OF UTAH
REGISTERED ARCHITECTS IN THE STATE OF WYOMING
REGISTERED ARCHITECTS IN THE STATE OF MONTANA
REGISTERED ARCHITECTS IN THE STATE OF IDAHO
REGISTERED ARCHITECTS IN THE STATE OF WASHINGTON
REGISTERED ARCHITECTS IN THE STATE OF OREGON





FRONT ELEVATION
SCALE: 1:100



SECTION A-A
SCALE: 1:100

AREA STATEMENT :-

FLOORS	TOTAL B.U.A (sq.m.)	AREA STATEMENT FOR FREE OF F.A.R.	GROSS F.A.R (sq.m.)	LESS ADDITIONAL F.A.R 7.5%	NET F.A.R (sq.m.)
		STAIRS/LIFT (sq.m.)	BALCONY TERRACE (sq.m.)	PARKING (sq.m.)	
STILT FLOOR	2089.27	97.20	0.00	0.00	1864.00
1ST FLOOR	1730.46	118.13	327.44	0.00	1284.89
2ND FLOOR	2009.60	118.13	395.99	0.00	1495.48
3RD FLOOR	2009.60	118.13	395.99	0.00	1495.48
4TH FLOOR	2009.60	118.13	395.99	0.00	1495.48
5TH FLOOR	2009.60	118.13	395.99	0.00	1495.48
6TH FLOOR	2009.60	118.13	395.99	0.00	1495.48
7TH FLOOR	2009.60	118.13	395.99	0.00	1495.48
8TH FLOOR	2043.49	118.13	363.51	41.76	1520.09
TOTAL	17920.82	1042.24	3066.89	41.76	1864.00

APPROVED DEVELOPMENT PERMISSION
NO. 20-4/2016/17/95D

SCHEDULE OF OPENINGS

TYPE	CLEAR DIMENSIONS	
	LENGTH IN METRES	HEIGHT IN METRES
ED	1.00 2.15	
D1	0.90 2.15	
D2	0.75 2.15	
SD	2.80 2.15	
SD1	1.80 2.15	
SD2	1.50 2.15	
W1	1.80 1.25	
W2	1.00 1.25	
V	0.60 0.60	

BLOCK 'B'

PROPOSED REVISION ON PLOT BEARING
17°40'58" DN HD 21°11' A AT SANKOALE
VILLAGE, HONNAYKI TALUKA, GDA.

CLIENT'S NAME
M/S UMIVA HOLDINGS PVT LTD

DATE: 11-09-16 SCALE: 1:100

ARCHITECT'S SIGNATURE
Bryan U Soares
REG. NO. 4581/2016
4000102016

ENGINEERING
SOARES & ASSOCIATES
B-1, 10th FLOOR,
PILGRIM ROAD,
PUNE, GDA.