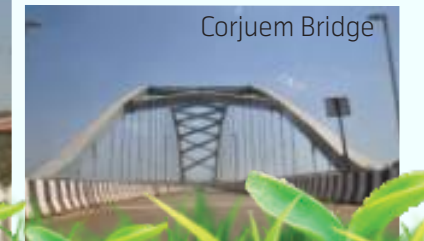




*Saldanha*  
**Green Valley**  
N a c h i n o l a



Experience living in  
Quiet, Serene and  
Tranquil Countryside







PHASE I



Saldanha Green Valley: - A residential complex with open concept apartments, merging with the green surrounds of the valley - where the expression of large balconies and windows, blur the boundary of the apartments and its surrounds.

Saldanha Green Valley is uniquely designed to follow the contours of the land with different floor levels offering panorama view of the valley and sky.

A Luxury by the valley, offers a selection of different sized 2 bedrooms, with different views of nature.

This exclusive resort style suite features exclusive car park, elegant, garden areas, gourmet kitchen with granite tops and much more. Including a club house with a party room and waddling swimming pool. Some suites overlook green fields and valleys.

In Saldanha Green Valleys we will create a fine residential complex using the best of material.

We take pride in providing this truly valuable real estate to be your next home - making a commitment to provide sustainable real estate, balancing this development with environment care and social responsibility.







## Features

- Conveniently located connecting Mapusa.
- Designated car parking spot.
- Vitrified flooring for all room, with Anti skid tiles for bathroom, with hot and cold water arrangements.
- French windows for living room, giving a better feel of the outdoor.
- Kitchen platform with Granite top & Stainless Steel Sink.

- Main door with Teakwood and brass fixtures, other doors with teakwood frame and marine ply panels.
- Internal road with Interlocking pavers & landscape gardens.
- Provision for Inverter connection for power back up.
- Plumbing provision for Individual Solar water heater for each apartment to ensure continues hot & cold water in all taps.

## Amenities

- Swimming Pool.
- Landscaped Garden
- 24.Hrs. Security.
- Gated Complex.
- Club House with Party Room



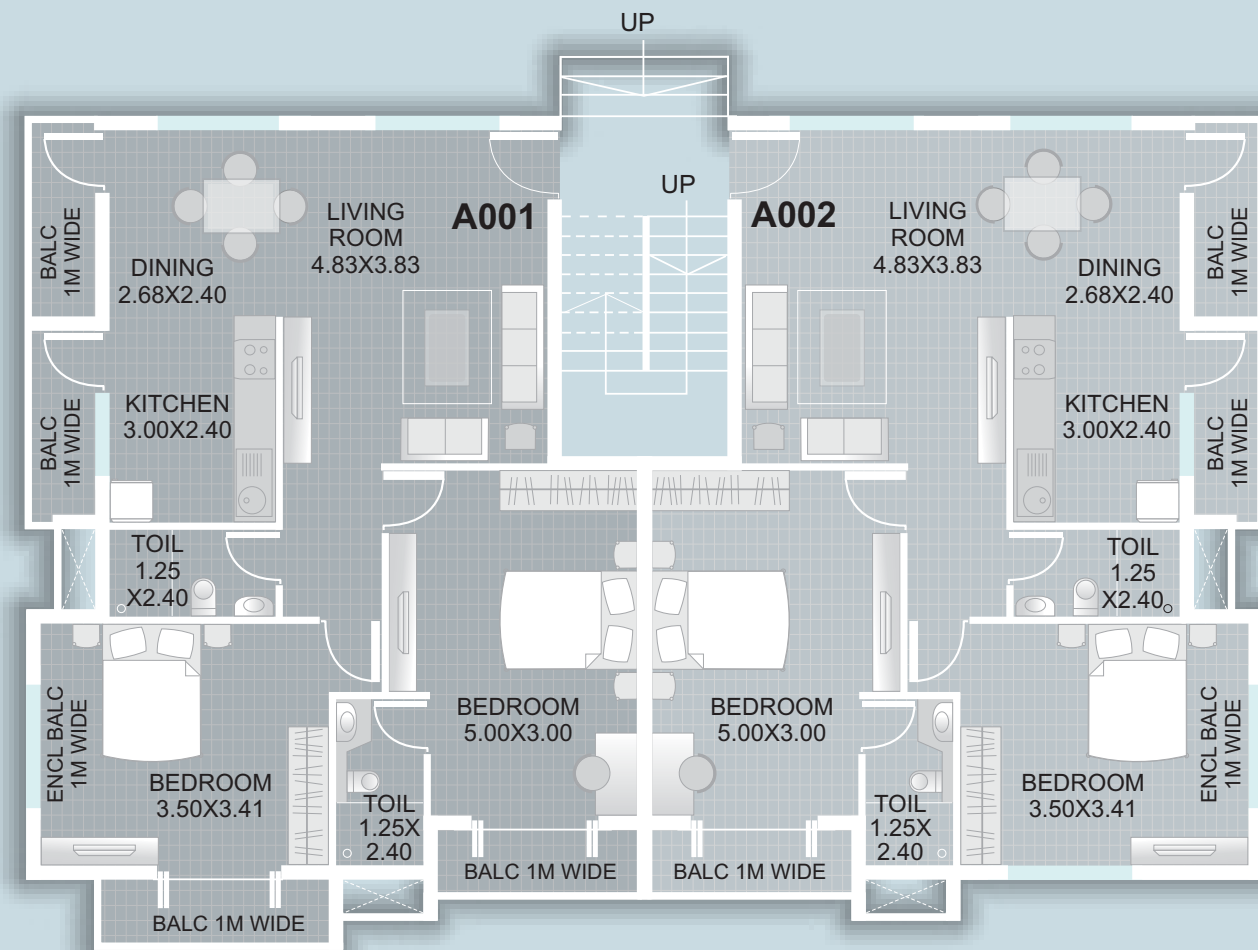
Swimming Pool, Children's Play Area,  
Gym, Club House with Party Room  
Covered Parking



# BLOCK A



Unit No.	Area
A001	106.98 Sqm.
A002	103.00 Sqm.

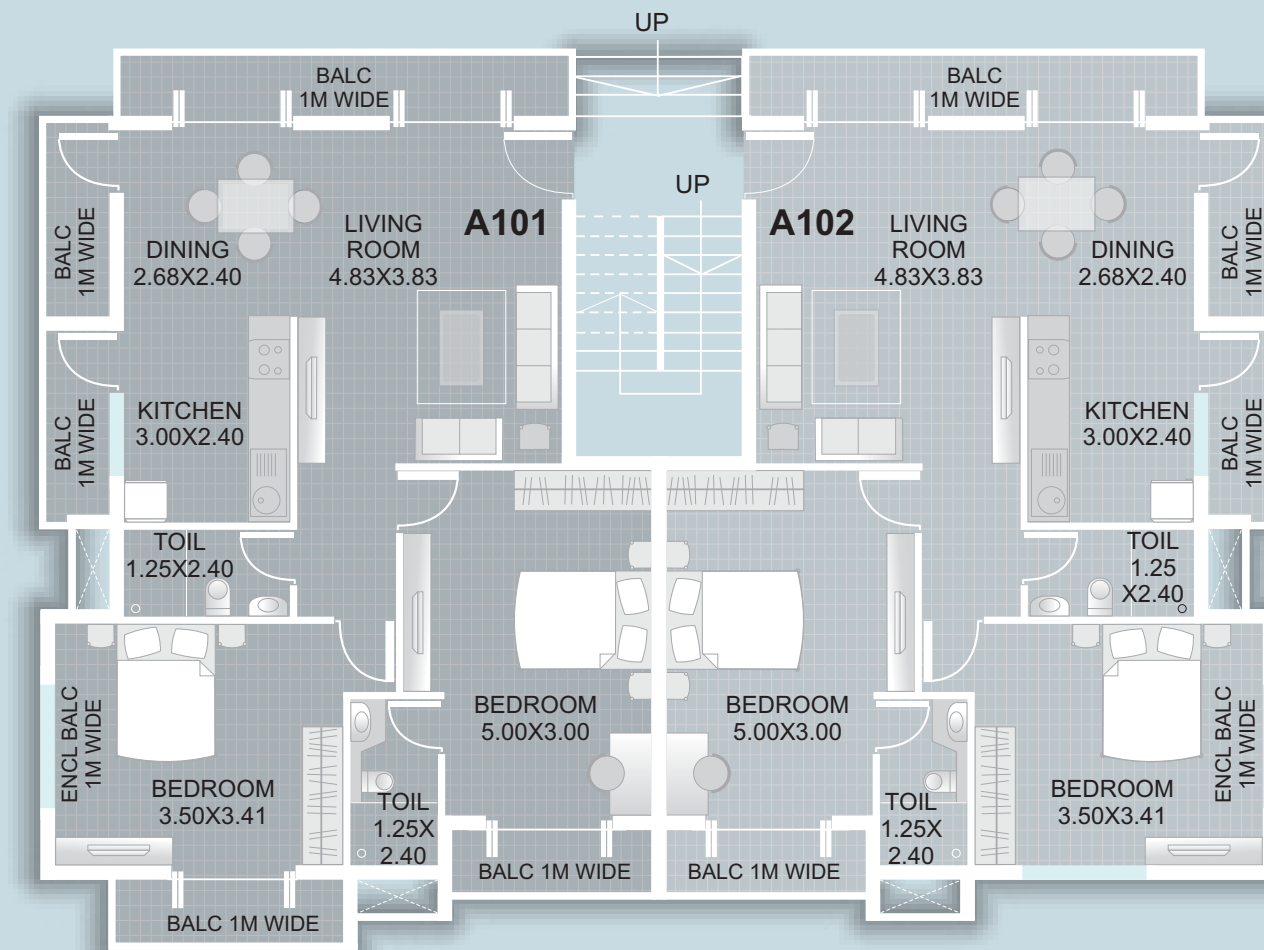


UPPER GROUND FLOOR

# BLOCK A



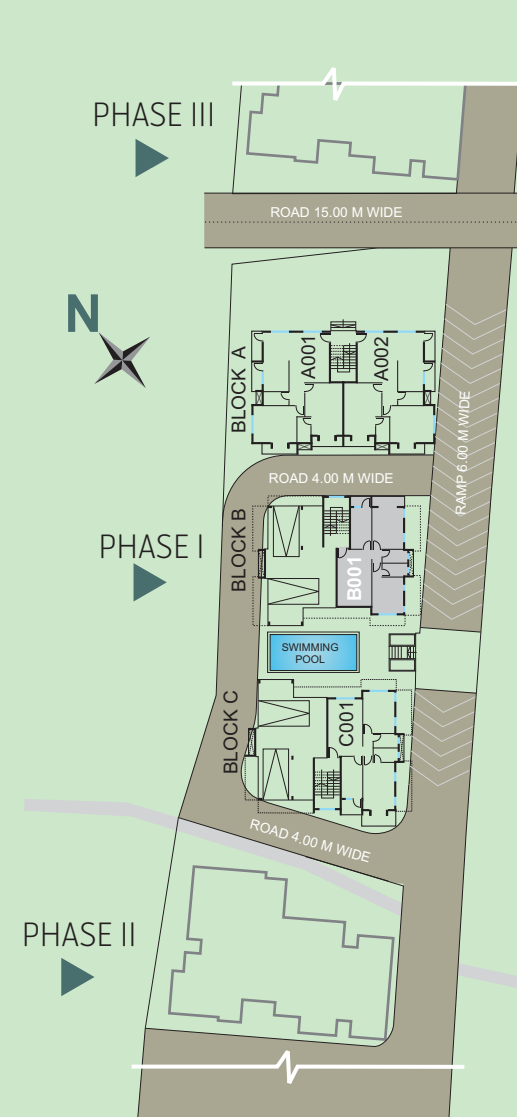
Unit No.	Area
A101	114.43 Sqm.
A102	110.44 Sqm.



FIRST FLOOR

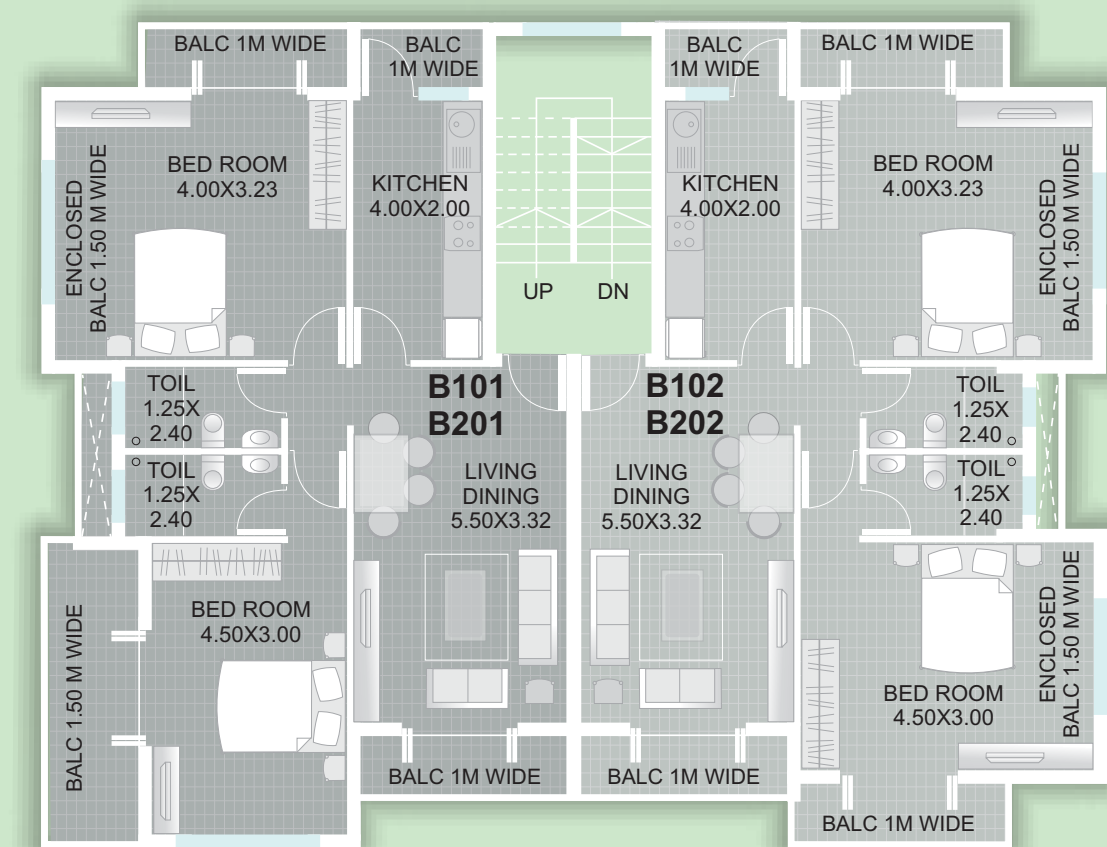
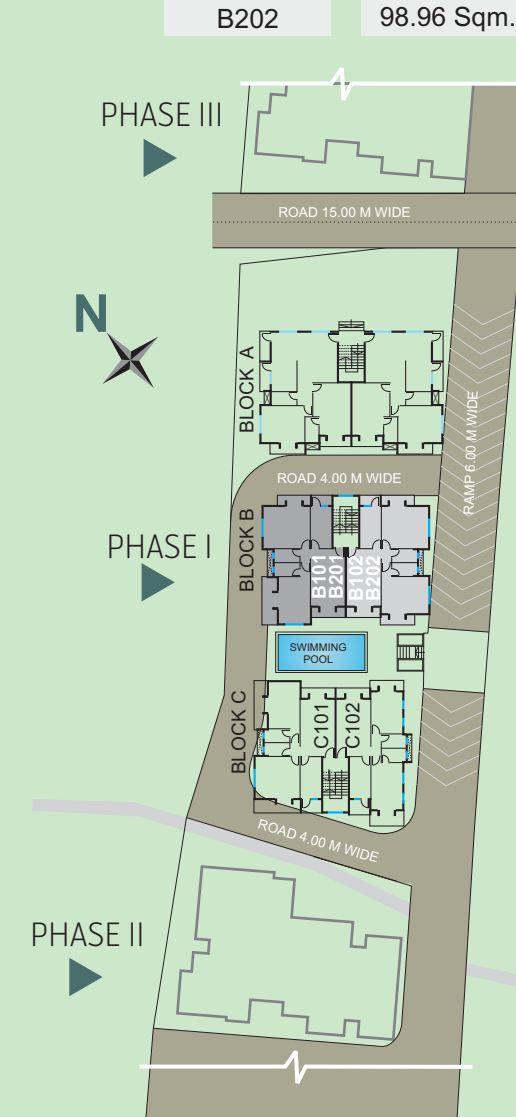
# BLOCK B

Unit No.	Area
B001	78.96 Sqm.



# BLOCK B

Unit No.	Area
B101	100.45 Sqm.
B102	98.96 Sqm.
B201	100.45 Sqm.
B202	98.96 Sqm.

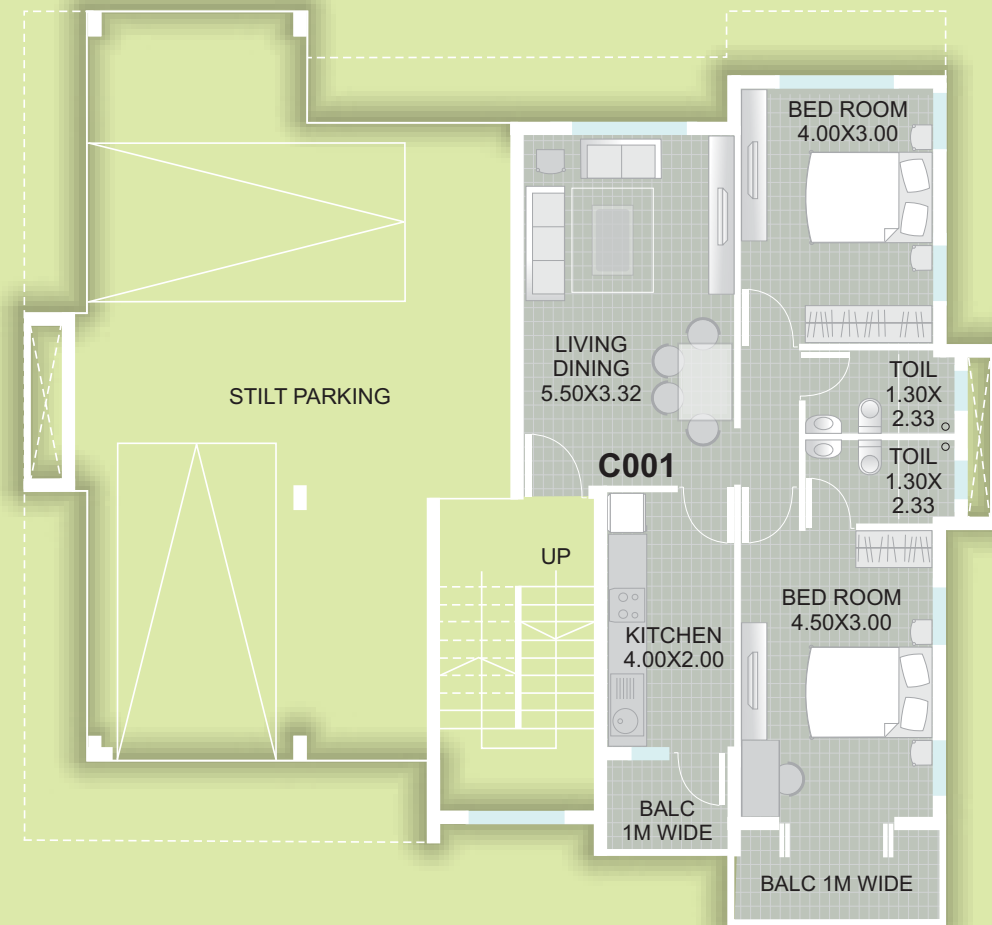


GROUND FLOOR

TYPICAL FIRST & SECOND FLOOR

# BLOCK C

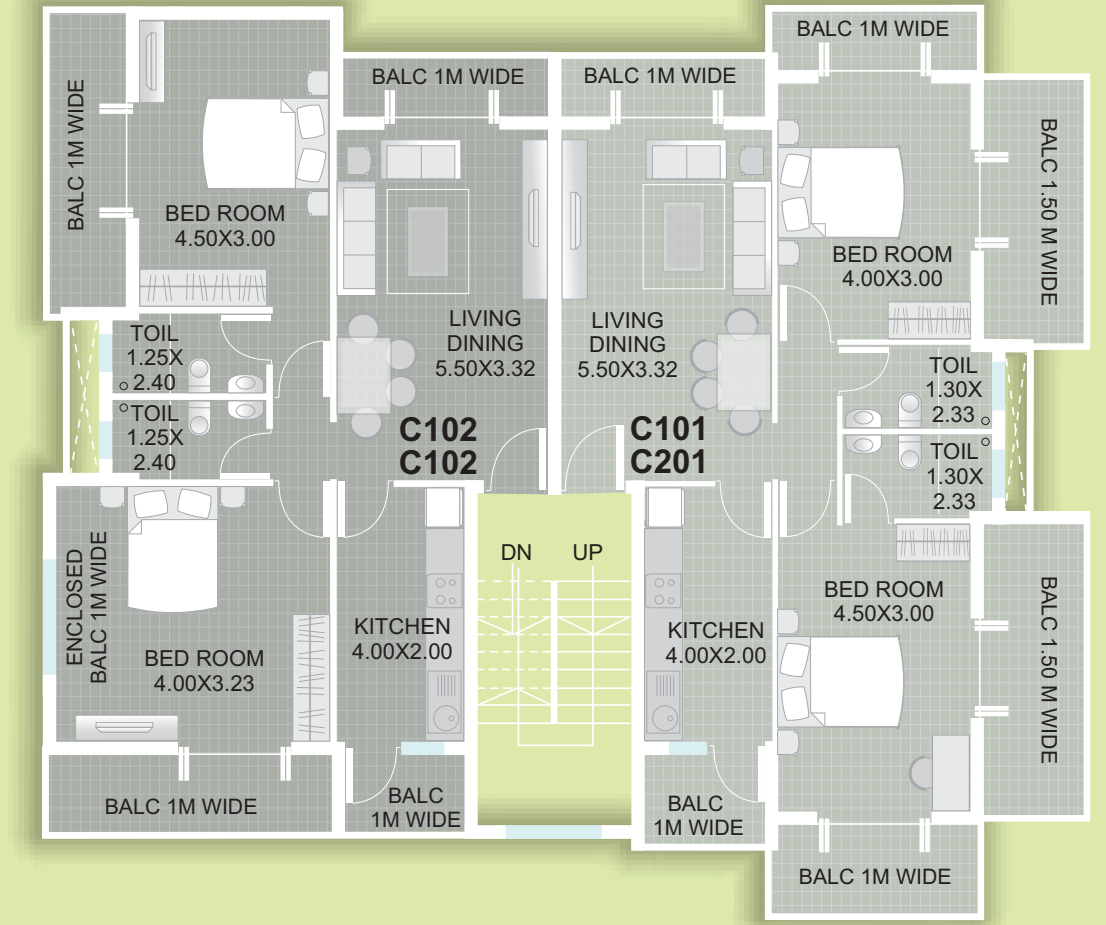
Unit No.	Area
C001	86.29 Sqm.



GROUND FLOOR

# BLOCK C

Unit No.	Area
C101	108.03 Sqm.
C102	100.08 Sqm.
C201	108.03 Sqm.
C202	100.08 Sqm.

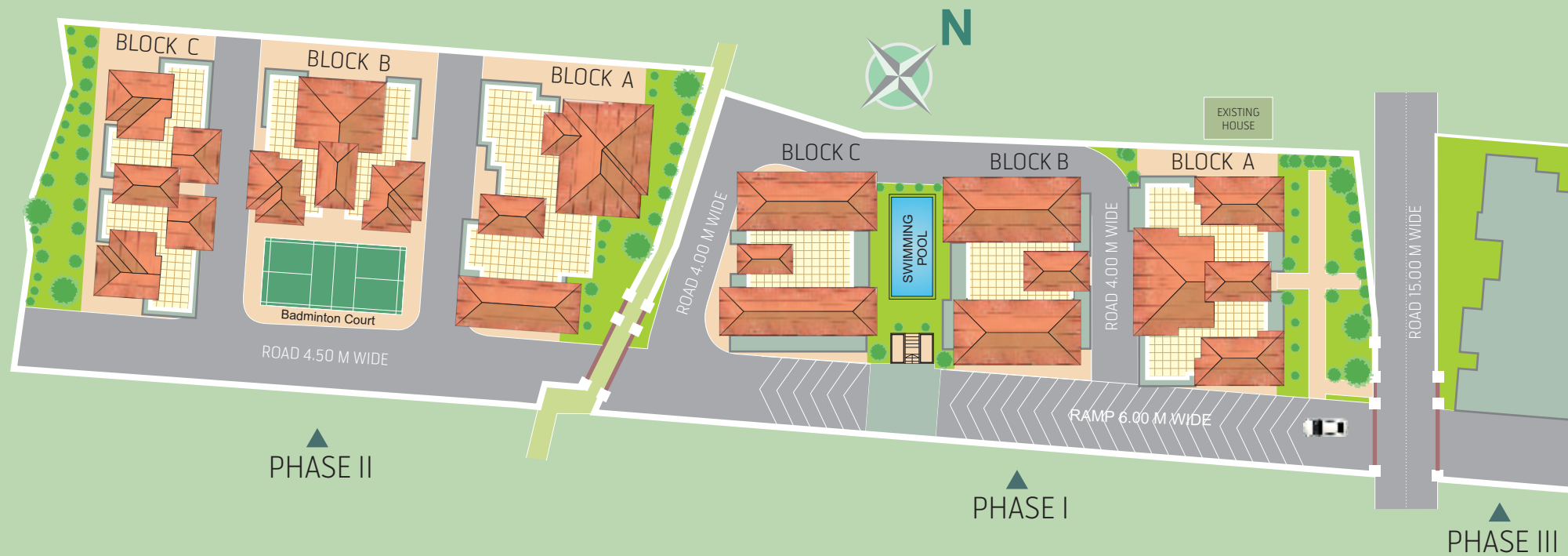


TYPICAL FIRST & SECOND FLOOR





## SITE PLAN



**We invite you...** call us today and reserve your private appointment for this exceptional new residential opportunity.

We take pride in providing a truly valuable real estate to be your next home, and we make it part of our commitment to provide sustainable real estate development, balancing development with environment care and social responsibility.

**SD Saldanha Developers (P) Ltd.**

Head Office:

5/6, Pawan Palace, Sitladevi Temple Road, Mahim - 400 016, Mumbai  
Tel : (022) 24314300 / 301 E-mail : mumbai.office@saldanhagroup.com

302, Mathias Plaza, 18th June Road, Panaji - 403 001, Goa, India  
Tel: (0832) 2224485, 2220568 / 69 Fax : (91) 0832 2420439  
E-mail : sales@saldanhagroup.com

DS - 1, 2, Pancharatna, Martires Dias Road Margao - 403 601, Goa, India  
Tel : (0832) 2733576, 2737330 Fax : (91) 0832 2734017  
E-mail : margao.office@saldanhagroup.com

Web Site : [www.saldanhagroup.com](http://www.saldanhagroup.com)

MEMBER OF

This is not a legal offering and all plans and visuals are an artists impression and subject to revision.

Designed by : SHIRISH, 9822144621