



ग्रामपंचायत कारापूर, सर्वण डिचोली-गोवा  
VILLAGE PANCHAYAT KARAPUR-SARVAN

TAL. BICHOLIM - GOA  
PH. : 2364273

Ref. No. VP / KS / 2025-2026 / 59

Date : 11/4/2025

To,  
Errichter Infra Private Limited,  
Office at 701 unit, 7<sup>th</sup> Floor, 1 Aerocity Building,  
NIBR Compound, Mohili Village, Sakinaka ,  
Safed Pool, Mumbai.

Sub:- Final N.O.C for Sub- Division of Land for ( four Plots only) in Sy. No.148/0 of Carapur village, Taluka Bicholim by Errichter Infra Private Limited.

Sir,


With reference to the above letter and as per Panchayat resolution No. 5 dated 29/03/2025, a Final No Objection from Planning point of view for final sub- division of land for Plot No. A-134, A-135, B-362 and B-442 only bearing Sy .No 148/0 of Carapur, as mentioned in the Plans is hereby granted subjected to the condition as laid down and also you should comply all the conditions imposed by the Town and Country Planning Department Authority, Bicholim - Goa, vide their letter No. DC/8166/CARAPUR/BICH/TCP-25/849 DT. 20/03/2025.

Keeping one set of plan and other documents for this office records the rest are enclosed herewith for further necessary action.

The permission granted will be revoked if any genuine complaint received by this Panchayat by public in order of any higher authority.

HE/SHE HAS PAID THE LICENCE FEES TO THE TUNE OF RS.25000= 00 ( Rupees  
Twenty five Thousand) VIDE RECEIPT NO. 482/48 DATED 15/04/2025.

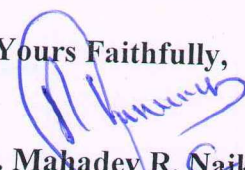
This carries the embossed seal of Panchayat Office of Village Panchayat Karapur - Sarvan, Bicholim - Goa.

  
Seen

( Smt. Tanvi T. Sawant )  
V.P. Sarpanch  
V.P. Karapur - Sarvan



Yours Faithfully,

  
( Shri. Mahadev R. Naik )  
V.P. Secretary  
V.P. Karapur - Sarvan

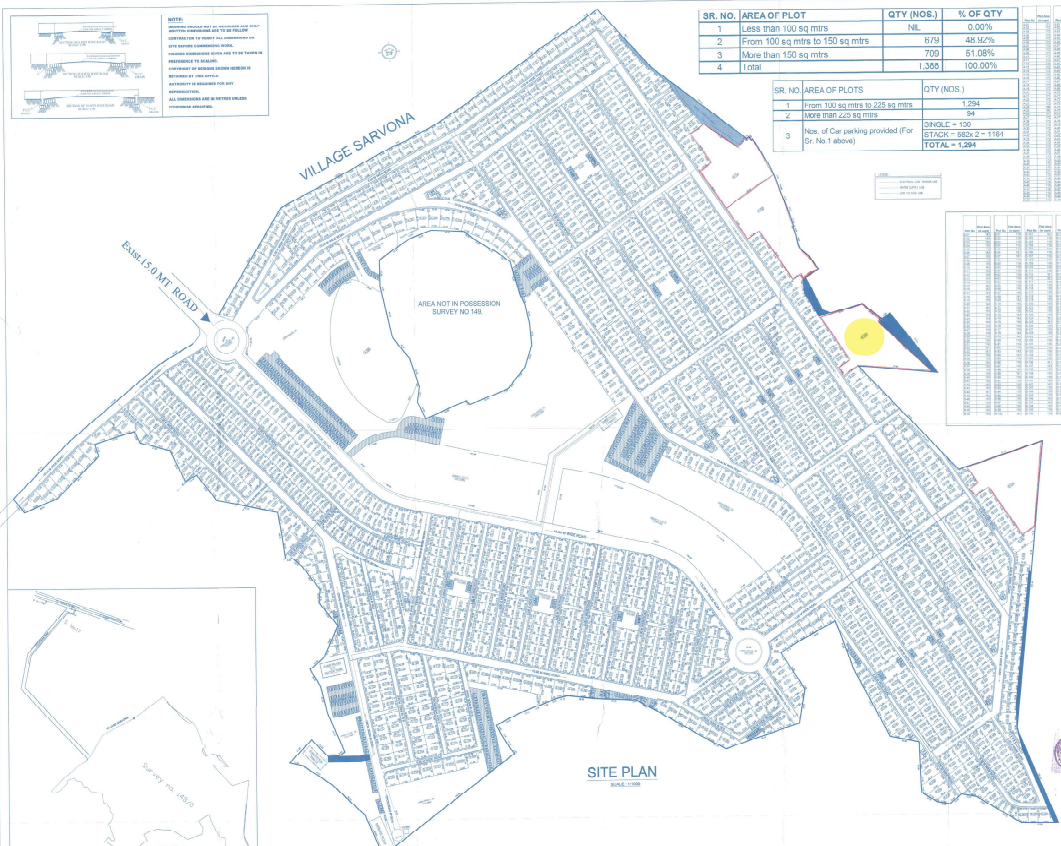
**NOTE:**  
 1. ALL DIMENSIONS ARE TO BE TAKEN AS SHOWN ON THIS PLAN.  
 2. THE AREA OF THE PLOTS SHALL BE TAKEN AS SHOWN ON THIS PLAN.  
 3. THE AREA OF THE PLOTS SHALL BE TAKEN AS SHOWN ON THIS PLAN.  
 4. THE AREA OF THE PLOTS SHALL BE TAKEN AS SHOWN ON THIS PLAN.  
 5. THE AREA OF THE PLOTS SHALL BE TAKEN AS SHOWN ON THIS PLAN.  
 6. THE AREA OF THE PLOTS SHALL BE TAKEN AS SHOWN ON THIS PLAN.  
 7. THE AREA OF THE PLOTS SHALL BE TAKEN AS SHOWN ON THIS PLAN.  
 8. THE AREA OF THE PLOTS SHALL BE TAKEN AS SHOWN ON THIS PLAN.  
 9. THE AREA OF THE PLOTS SHALL BE TAKEN AS SHOWN ON THIS PLAN.  
 10. THE AREA OF THE PLOTS SHALL BE TAKEN AS SHOWN ON THIS PLAN.

SR. NO.	AREA OF PLOT	QTY (NO.)	% OF QTY
1	Less than 100 sq mtrs	NIL	0.00%
2	From 100 sq mtrs to 150 sq mtrs	678	48.50%
3	More than 150 sq mtrs	709	51.08%
4	TOTL	1,387	100.00%

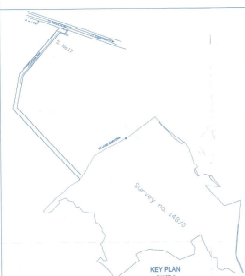
SR. NO.	AREA OF PLOTS	QTY (NO.)
1	From 100 sq mtrs to 225 sq mtrs	1,784
2	More than 225 sq mtrs	64
3	No. of Car parking provided (For No. 1 above)	SINGLE = 130 TOTAL = 1,914

SR. NO.	AREA OF PLOT	QTY (NO.)	% OF QTY
1	Less than 100 sq mtrs	NIL	0.00%
2	From 100 sq mtrs to 150 sq mtrs	678	48.50%
3	More than 150 sq mtrs	709	51.08%
4	TOTL	1,387	100.00%

SR. NO.	AREA OF PLOT	QTY (NO.)	% OF QTY
1	Less than 100 sq mtrs	NIL	0.00%
2	From 100 sq mtrs to 150 sq mtrs	678	48.50%
3	More than 150 sq mtrs	709	51.08%
4	TOTL	1,387	100.00%



**SITE PLAN**



SR. NO.	O.S.	O.S. Area	Parking Area	%
1	100.00	27,618.78	5,26,203	19.03%
2	100.00	1,112.74	21,841	1.96%
3	100.00	79,844	1,60,000	19.14%
4	100.00	1,112.74	21,841	1.96%
5	100.00	1,112.74	21,841	1.96%
6	100.00	1,112.74	21,841	1.96%
7	100.00	1,112.74	21,841	1.96%
8	100.00	1,112.74	21,841	1.96%
9	100.00	1,112.74	21,841	1.96%
10	100.00	1,112.74	21,841	1.96%
11	100.00	1,112.74	21,841	1.96%
12	100.00	1,112.74	21,841	1.96%
13	100.00	1,112.74	21,841	1.96%
14	100.00	1,112.74	21,841	1.96%
15	100.00	1,112.74	21,841	1.96%
16	100.00	1,112.74	21,841	1.96%
17	100.00	1,112.74	21,841	1.96%
18	100.00	1,112.74	21,841	1.96%
19	100.00	1,112.74	21,841	1.96%
20	100.00	1,112.74	21,841	1.96%
21	100.00	1,112.74	21,841	1.96%
22	100.00	1,112.74	21,841	1.96%
23	100.00	1,112.74	21,841	1.96%
24	100.00	1,112.74	21,841	1.96%
25	100.00	1,112.74	21,841	1.96%
26	100.00	1,112.74	21,841	1.96%
27	100.00	1,112.74	21,841	1.96%
28	100.00	1,112.74	21,841	1.96%
29	100.00	1,112.74	21,841	1.96%
30	100.00	1,112.74	21,841	1.96%
31	100.00	1,112.74	21,841	1.96%
32	100.00	1,112.74	21,841	1.96%
33	100.00	1,112.74	21,841	1.96%
34	100.00	1,112.74	21,841	1.96%
35	100.00	1,112.74	21,841	1.96%
36	100.00	1,112.74	21,841	1.96%
37	100.00	1,112.74	21,841	1.96%
38	100.00	1,112.74	21,841	1.96%
39	100.00	1,112.74	21,841	1.96%
40	100.00	1,112.74	21,841	1.96%
41	100.00	1,112.74	21,841	1.96%
42	100.00	1,112.74	21,841	1.96%
43	100.00	1,112.74	21,841	1.96%
44	100.00	1,112.74	21,841	1.96%
45	100.00	1,112.74	21,841	1.96%
46	100.00	1,112.74	21,841	1.96%
47	100.00	1,112.74	21,841	1.96%
48	100.00	1,112.74	21,841	1.96%
49	100.00	1,112.74	21,841	1.96%
50	100.00	1,112.74	21,841	1.96%
51	100.00	1,112.74	21,841	1.96%
52	100.00	1,112.74	21,841	1.96%
53	100.00	1,112.74	21,841	1.96%
54	100.00	1,112.74	21,841	1.96%
55	100.00	1,112.74	21,841	1.96%
56	100.00	1,112.74	21,841	1.96%
57	100.00	1,112.74	21,841	1.96%
58	100.00	1,112.74	21,841	1.96%
59	100.00	1,112.74	21,841	1.96%
60	100.00	1,112.74	21,841	1.96%
61	100.00	1,112.74	21,841	1.96%
62	100.00	1,112.74	21,841	1.96%
63	100.00	1,112.74	21,841	1.96%
64	100.00	1,112.74	21,841	1.96%
65	100.00	1,112.74	21,841	1.96%
66	100.00	1,112.74	21,841	1.96%
67	100.00	1,112.74	21,841	1.96%
68	100.00	1,112.74	21,841	1.96%
69	100.00	1,112.74	21,841	1.96%
70	100.00	1,112.74	21,841	1.96%
71	100.00	1,112.74	21,841	1.96%
72	100.00	1,112.74	21,841	1.96%
73	100.00	1,112.74	21,841	1.96%
74	100.00	1,112.74	21,841	1.96%
75	100.00	1,112.74	21,841	1.96%
76	100.00	1,112.74	21,841	1.96%
77	100.00	1,112.74	21,841	1.96%
78	100.00	1,112.74	21,841	1.96%
79	100.00	1,112.74	21,841	1.96%
80	100.00	1,112.74	21,841	1.96%
81	100.00	1,112.74	21,841	1.96%
82	100.00	1,112.74	21,841	1.96%
83	100.00	1,112.74	21,841	1.96%
84	100.00	1,112.74	21,841	1.96%
85	100.00	1,112.74	21,841	1.96%
86	100.00	1,112.74	21,841	1.96%
87	100.00	1,112.74	21,841	1.96%
88	100.00	1,112.74	21,841	1.96%
89	100.00	1,112.74	21,841	1.96%
90	100.00	1,112.74	21,841	1.96%
91	100.00	1,112.74	21,841	1.96%
92	100.00	1,112.74	21,841	1.96%
93	100.00	1,112.74	21,841	1.96%
94	100.00	1,112.74	21,841	1.96%
95	100.00	1,112.74	21,841	1.96%
96	100.00	1,112.74	21,841	1.96%
97	100.00	1,112.74	21,841	1.96%
98	100.00	1,112.74	21,841	1.96%
99	100.00	1,112.74	21,841	1.96%
100	100.00	1,112.74	21,841	1.96%

AREA STATEMENTS	
1) TOTAL AREA OF THE PROPERTY (O.S. + ROAD AREA)	4,20,000 sqm
2) OPEN SPACE (PARKING + ROAD)	1,93,780 sqm
3) BUILDING FOOTPRINT (TOTAL)	1,83,740 sqm
4) PLANTY PROVIDED (TOTAL)	1,13,840 sqm
5) AREA UNDER ROADS	1,13,840 sqm
6) AREA UNDER PARKING	1,13,840 sqm
7) AREA UNDER PLANTY	1,13,840 sqm

APPROVED: VICE REG. NO. DCBIS/CAVURE/BOH/TP/24/10/08 DATE: 01/08/2008  
 APPROVED: VICE REG. NO. VOP/PLP/NO/228/00/01 DATE: 01/08/2008

**FINAL NOC FOR SUB-DIVISION OF LAND (4) PLOT NO. A-154, A-155 (B-2) AND PLOT NO. B-442 (IN PROPERTY BEARING SURVEY NO 148/O OF VILLAGE CHANNUPUR, TALUK, BICHOLIM, GOA FOR MR. SIDDHARTH BIRAJI PRIVATE LIMITED.**

**CONVERTER SIGN:**  
  
**SIGNATURE OF CONSULTANT:**  
  
**M. S. WILSON**  
 CONSULTANT



LEGEND

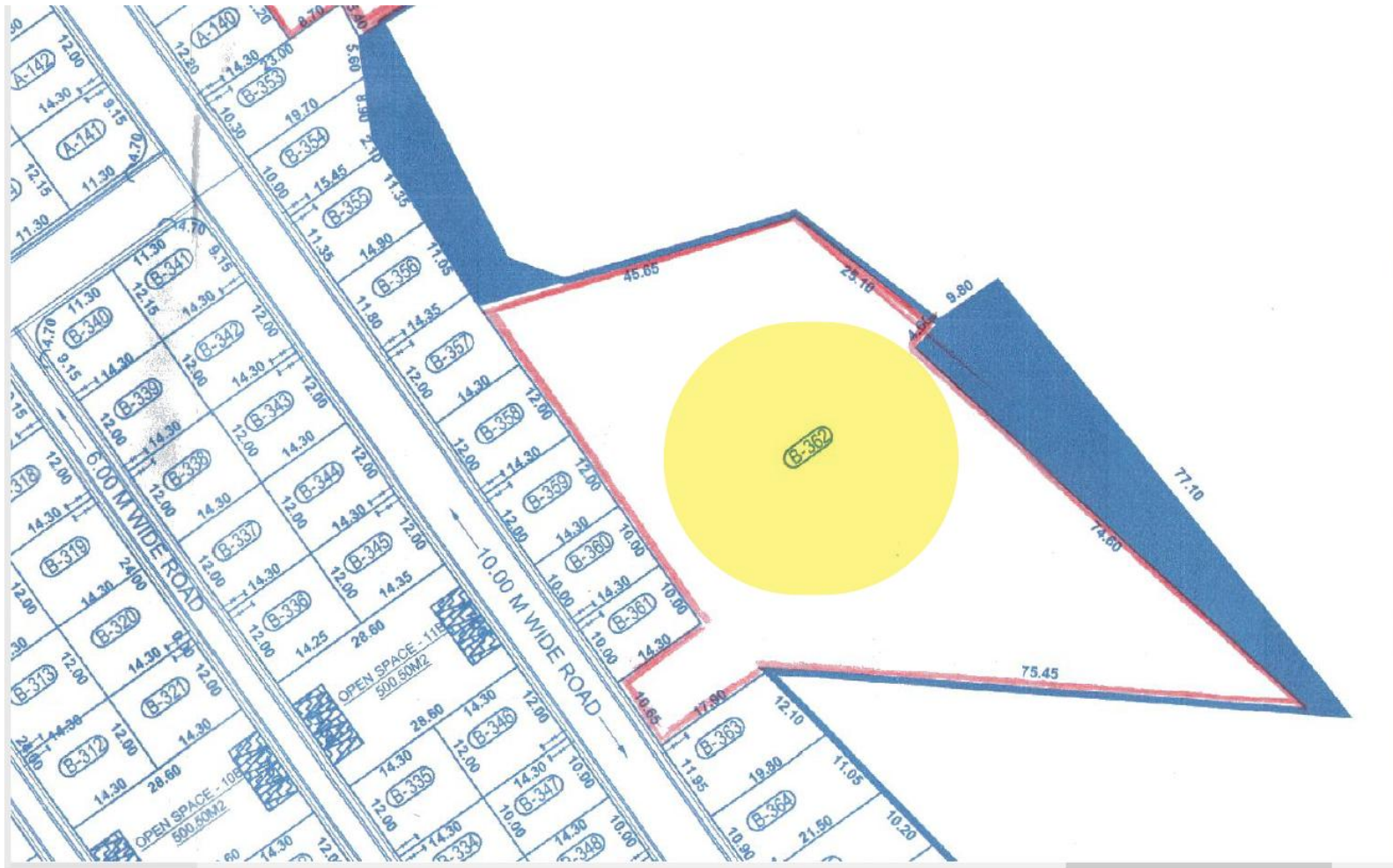
-----	ELECTRICAL LOW TENSION LINE
—————	WATER SUPPLY LINE
.....	LOW VOLTAGE LINE

A-40	172	A-90	143	A-140	174	A-190	172	A-240	172
A-41	177	A-91	143	A-141	173	A-191	172	A-241	172
A-42	271	A-92	142	A-142	172	A-192	172	A-242	172
A-43	172	A-93	143	A-143	173	A-193	172	A-243	172
A-44	180	A-94	143	A-144	172	A-194	172	A-244	172
A-45	186	A-95	143	A-145	172	A-195	172	A-245	172
A-46	186	A-96	143	A-146	172	A-196	172	A-246	172
A-47	190	A-97	143	A-147	173	A-197	172	A-247	172
A-48	190	A-98	143	A-148	172	A-198	172	A-248	172
A-49	190	A-99	143	A-149	172	A-199	172	A-249	172
A-50	190	A-100	174	A-150	172	A-200	172	A-250	172

Plot No	Plot Area (In sqm)	Plot No	Plot Area (In sqm)	Plot No	Plot Area (In sqm)	Plot No	Plot Area (In sqm)	Plot No	Plot Area (In sqm)	Plot No	Plot Area (In sqm)	Plot No	Plot Area (In sqm)
B-01	143	B-51	116	B-101	131	B-151	143	B-201	116	B-251	144	B-301	143
B-02	116	B-52	116	B-102	116	B-152	143	B-202	116	B-252	142	B-302	143
B-03	116	B-53	116	B-103	116	B-153	116	B-203	116	B-253	172	B-303	143
B-04	116	B-54	116	B-104	116	B-154	116	B-204	183	B-254	172	B-304	186
B-05	143	B-55	116	B-105	116	B-155	116	B-205	149	B-255	172	B-305	186
B-06	143	B-56	181	B-106	116	B-156	143	B-206	157	B-256	172	B-306	143
B-07	116	B-57	181	B-107	116	B-157	143	B-207	169	B-257	167	B-307	143
B-08	116	B-58	116	B-108	116	B-158	116	B-208	145	B-258	143	B-308	143
B-09	116	B-59	116	B-109	116	B-159	116	B-209	180	B-259	226	B-309	143
B-10	143	B-60	116	B-110	116	B-160	116	B-210	143	B-260	226	B-310	143
B-11	143	B-61	116	B-111	116	B-161	116	B-211	143	B-261	116	B-311	172
B-12	116	B-62	116	B-112	151	B-162	116	B-212	143	B-262	126	B-312	172
B-13	116	B-63	116	B-113	131	B-163	116	B-213	172	B-263	143	B-313	172
B-14	116	B-64	116	B-114	116	B-164	116	B-214	172	B-264	172	B-314	172
B-15	143	B-65	116	B-115	116	B-165	116	B-215	172	B-265	172	B-315	172
B-16	143	B-66	116	B-116	116	B-166	116	B-216	172	B-266	172	B-316	172
B-17	116	B-67	116	B-117	116	B-167	116	B-217	172	B-267	172	B-317	172
B-18	116	B-68	181	B-118	116	B-168	153	B-218	173	B-268	172	B-318	172
B-19	116	B-69	143	B-119	116	B-169	201	B-219	172	B-269	172	B-319	172
B-20	143	B-70	116	B-120	116	B-170	143	B-220	172	B-270	172	B-320	172
B-21	161	B-71	116	B-121	116	B-171	116	B-221	172	B-271	172	B-321	172
B-22	116	B-72	116	B-122	116	B-172	116	B-222	172	B-272	172	B-322	172
B-23	116	B-73	143	B-123	116	B-173	116	B-223	143	B-273	172	B-323	143
B-24	116	B-74	143	B-124	151	B-174	116	B-224	143	B-274	172	B-324	143
B-25	116	B-75	116	B-125	151	B-175	116	B-225	143	B-275	172	B-325	143
B-26	116	B-76	116	B-126	116	B-176	116	B-226	143	B-276	143	B-326	143
B-27	116	B-77	116	B-127	116	B-177	116	B-227	216	B-277	143	B-327	143
B-28	116	B-78	143	B-128	116	B-178	116	B-228	231	B-278	102	B-328	186
B-29	116	B-79	143	B-129	116	B-179	143	B-229	186	B-279	166	B-329	186
B-30	116	B-80	116	B-130	116	B-180	143	B-230	186	B-280	116	B-330	143
B-31	116	B-81	116	B-131	116	B-181	116	B-231	221	B-281	106	B-331	143
B-32	161	B-82	116	B-132	116	B-182	116	B-232	186	B-282	143	B-332	143
B-33	161	B-83	143	B-133	116	B-183	116	B-233	186	B-283	143	B-333	143
B-34	116	B-84	143	B-134	116	B-184	116	B-234	186	B-284	143	B-334	143
B-35	116	B-85	116	B-135	116	B-185	116	B-235	186	B-285	143	B-335	172
B-36	116	B-86	116	B-136	131	B-186	116	B-236	186	B-286	143	B-336	172
B-37	116	B-87	116	B-137	143	B-187	116	B-237	186	B-287	172	B-337	172
B-38	116	B-88	143	B-138	116	B-188	145	B-238	186	B-288	172	B-338	172
B-39	116	B-89	181	B-139	116	B-189	145	B-239	186	B-289	172	B-339	172
B-40	116	B-90	116	B-140	116	B-190	199	B-240	186	B-290	172	B-340	172
B-41	116	B-91	116	B-141	143	B-191	143	B-241	186	B-291	172	B-341	172
B-42	116	B-92	116	B-142	143	B-192	116	B-242	186	B-292	172	B-342	172
B-43	116	B-93	116	B-143	116	B-193	116	B-243	186	B-293	172	B-343	172
B-44	161	B-94	116	B-144	116	B-194	116	B-244	186	B-294	172	B-344	172
B-45	161	B-95	116	B-145	116	B-195	116	B-245	186	B-295	172	B-345	172
B-46	116	B-96	116	B-146	143	B-196	116	B-246	186	B-296	172	B-346	172
B-47	116	B-97	116	B-147	143	B-197	116	B-247	186	B-297	172	B-347	143
B-48	116	B-98	116	B-148	116	B-198	131	B-248	186	B-298	172	B-348	143
B-49	116	B-99	116	B-149	116	B-199	186	B-249	186	B-299	143	B-349	143
B-50	116	B-100	161	B-150	116	B-200	116	B-250	186	B-300	143	B-350	143

Navigation toolbar with icons for pan, zoom in (+), zoom out (-), 300% zoom level, print, and other map controls.

Sr.No.	O.S.	O.S. Area	Part
1	OS 1A	27,645.75	
2	OS 2A	516.20	
3	OS 3A	909.15	



B-13	116	B-63
B-14	116	B-64
B-15	143	B-65
B-16	143	B-66
B-17	116	B-67
B-18	116	B-68
B-19	116	B-69
B-20	143	B-70
B-21	161	B-71
B-22	116	B-72
B-23	116	B-73
B-24	116	B-74
B-25	116	B-75
B-26	116	B-76
B-27	116	B-77
B-28	116	B-78
B-29	116	B-79
B-30	116	B-80
B-31	116	B-81
B-32	161	B-82
B-33	161	B-83
B-34	116	B-84
B-35	116	B-85
B-36	116	B-86
B-37	116	B-87
B-38	116	B-88
B-39	116	B-89
B-40	116	B-90
B-41	116	B-91
B-42	116	B-92
B-43	116	B-93
B-44	161	B-94