



EL ROSARIO

LUXURY APARTMENTS
PILERNE, GOA





EL ROSARIO APARTMENTS

Homes creating life-long memories

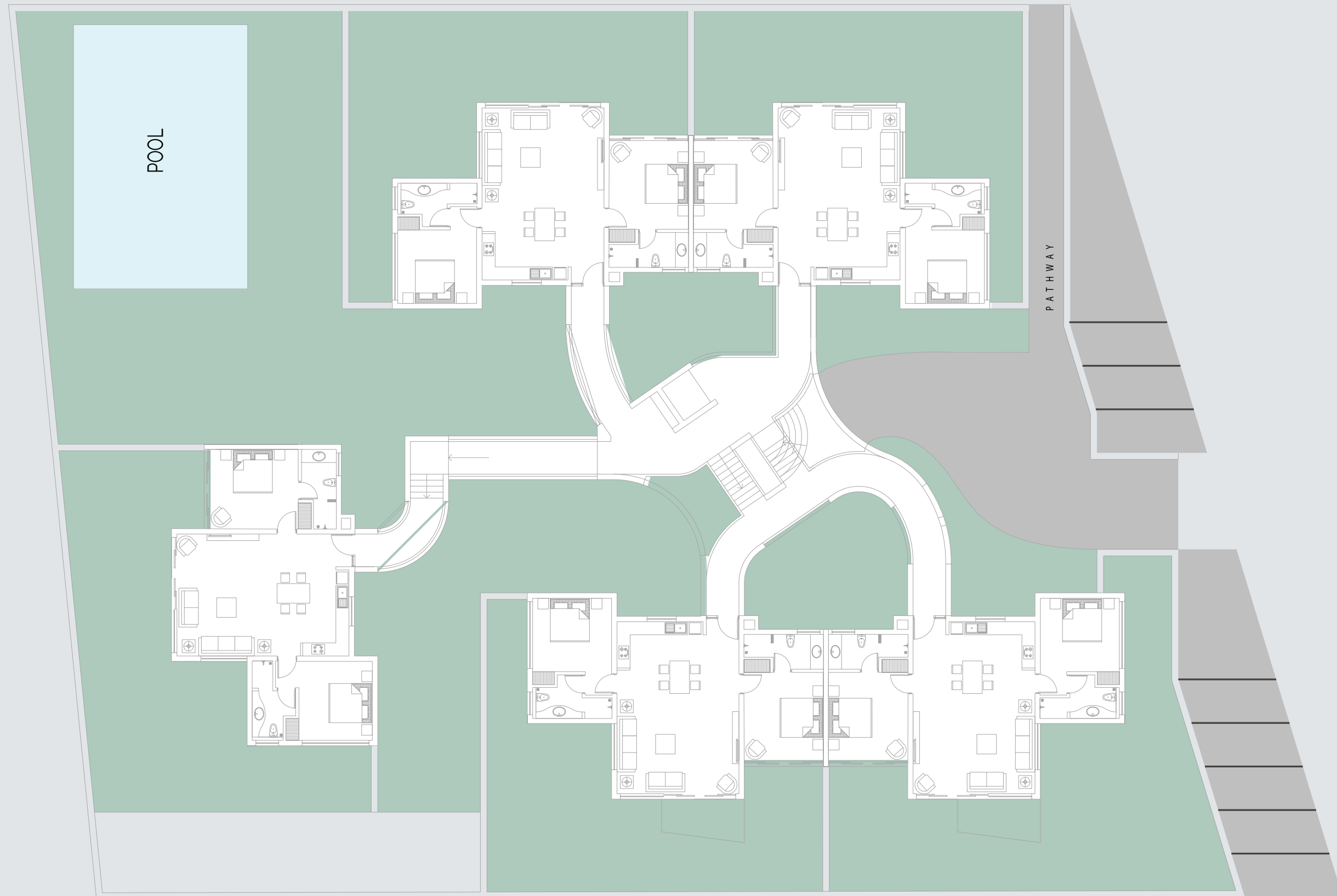


EL ROSARIO APARTMENTS

Architects of dream homes

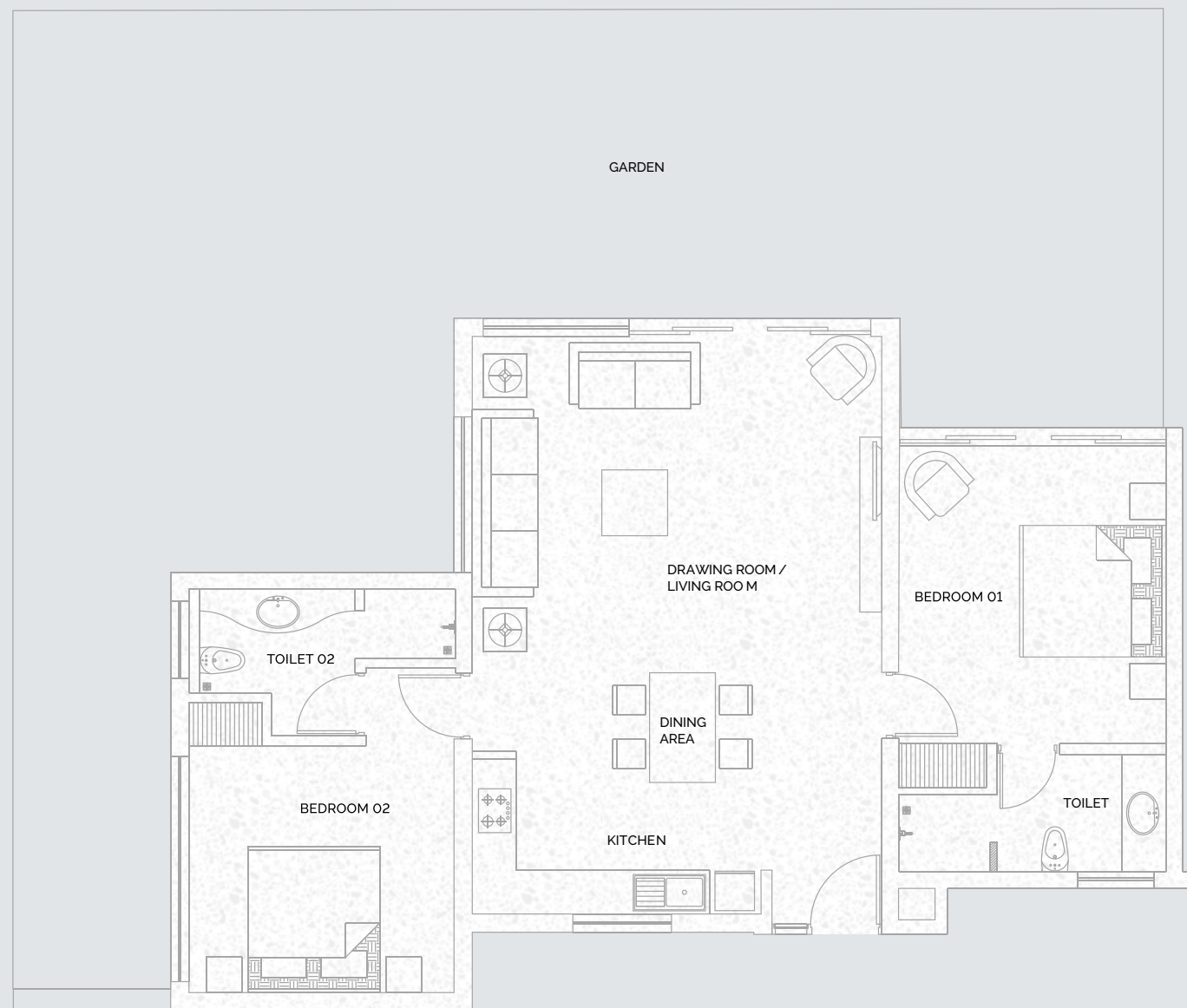


Site Plan

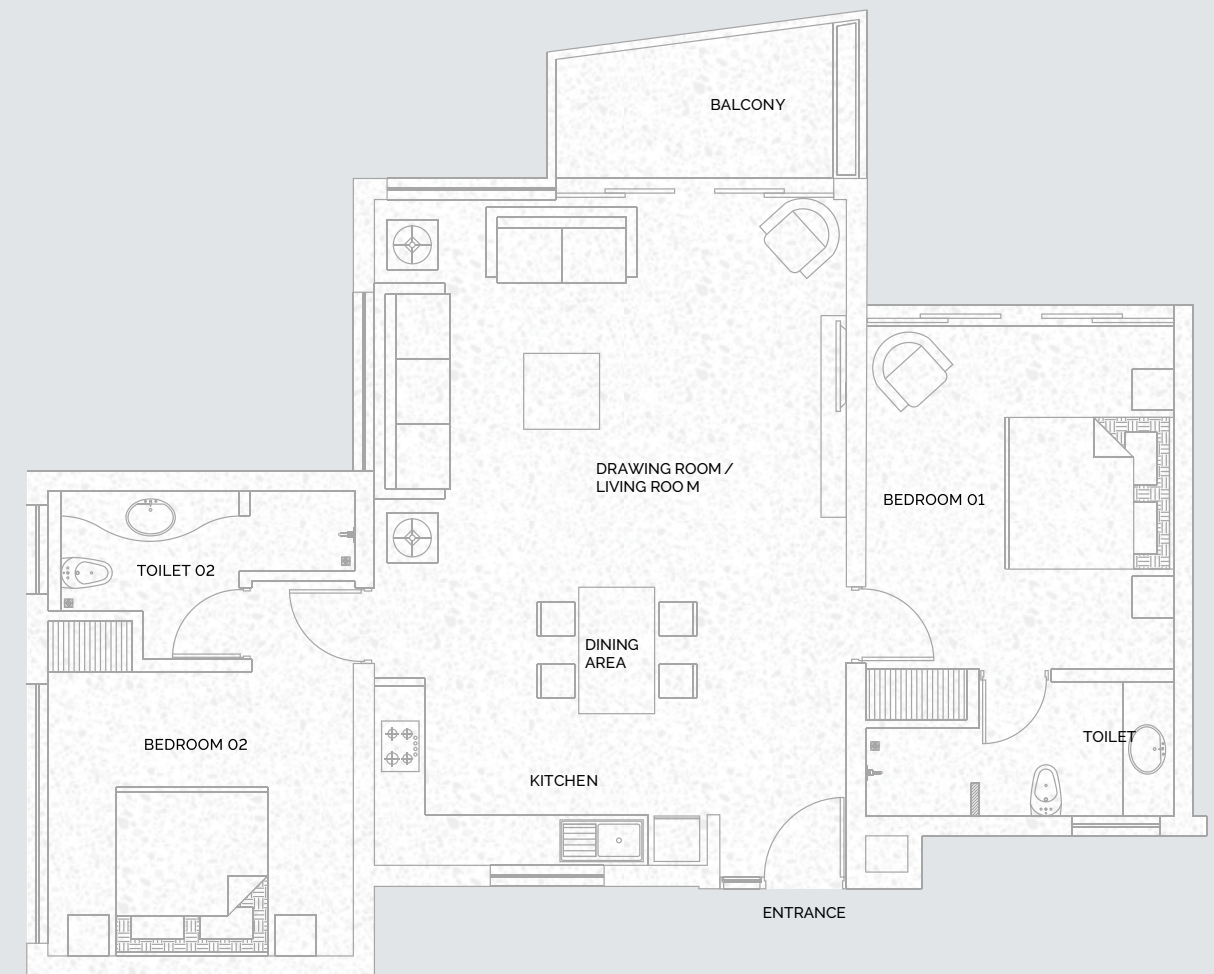


Floor Plan
With Garden

Inviting homes
with character



Floor Plan
With Balcony



Specifications



Bathroom

- Light fixtures and fittings provided
- Glass partitions in bathrooms
- Segregated wet / dry area in bathrooms
- Health faucets and looking mirror
- Electrical water heater
- Roca / Kohler fixtures and fittings



Exterior

- Landscaped garden
- Stone cladding on exterior walls
- Paved driveway
- Brass ironmongery
- Swimming pool



Electrical

- Intercom to main gate
- Built-in cabling for satellite TV
- High quality modular switch
- Home automation*
- High quality wiring



Staircase

- Light fixtures and fittings provided
- Hand painted tiles
- Marble



Structure

- Internal walls in fly ash bricks / heat insulated and water-proof blocks
- Waterproofing for terraces/sun-decks
- Quake resistant RCC framed structure
- High plinth-levels with damp-proofing below the ground-floor
- Water-proof sheeting over reinforced concrete sloping roofs
- External walls in heat insulated and water-proof blocks



Bedroom / Dining

- Light fixtures and fittings provided
- Exposed brick wall
- Aluminium windows
- Gypsum plaster
- Terrazzo tiles



Kitchen

- Light fixtures and fittings provided
- Modular kitchen
- Stainless steel sink
- Ceramic tiles on kitchen wall and back splash tiles
- Modular kitchen (Blum Fittings)



Balcony / Terrace

- Brass ironmongery
- Marble/ceramic tiles

Disclaimer:

**These are not part of the standard specifications. Specifications are indicative and are subject to change as decided by the Company.*



Sy. No. 88/3, Reis Magos,
Bardez, Goa
+91 9555774631