

AREA CALCULATIONS : PROPOSED BUILDING : SCALE 1:200



BASEMENT FLOOR

STAIRCASE
S2 = 4.90x5.30=25.97 M2

ENT FOYER
E1 = 9.00x5.30=47.70 M2

LIFT
L1 = 4.40x5.30=23.32 M2

Development Permission Granted
Subject To Conditions Vide Order
No SGPDA/P/5632/40/24/25
Dated 04/04/2024

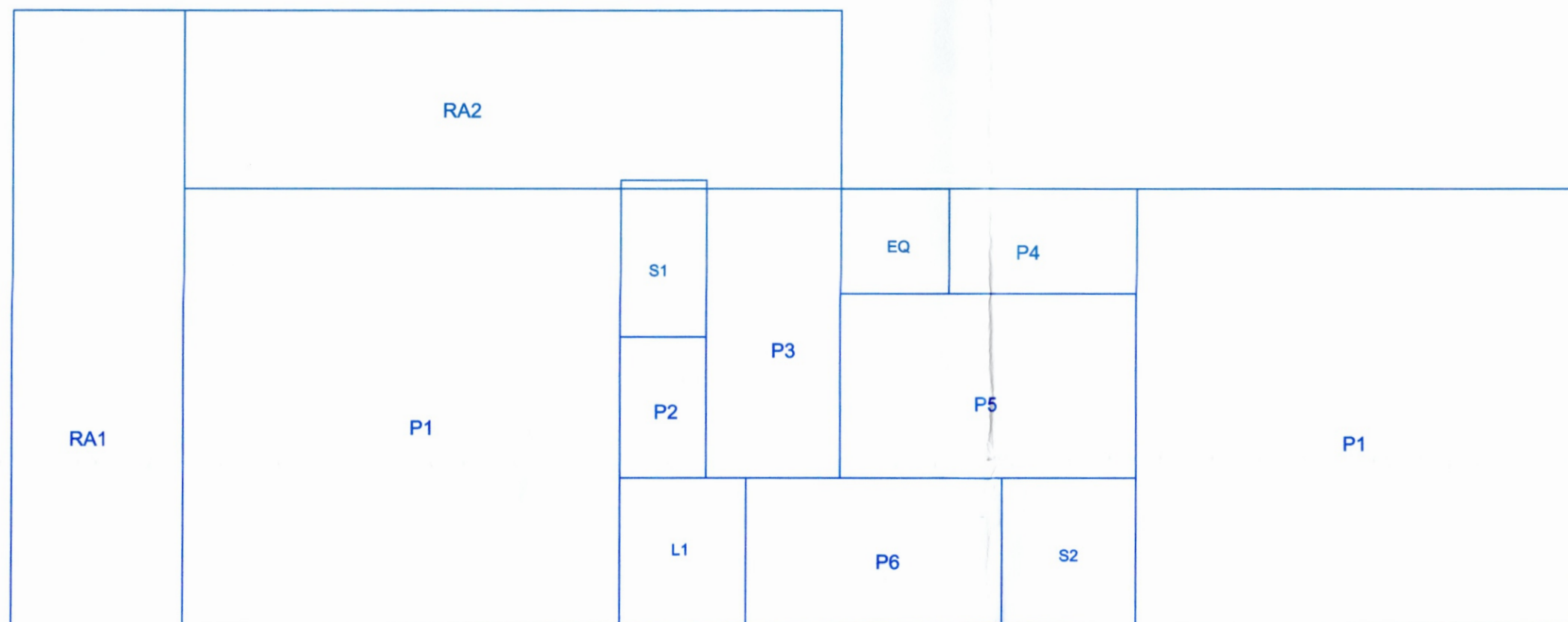
[Signature]
4/4/2024
Member Secretary

BASEMENT/LOWER GROUND STILT FLOOR

STILT AREA
P1X2 = 2X15.30X15.50=474.30
P2 = 18.10X10.20=184.62
P3 = 9.00X5.25 =47.25
706.17 M2

STAIRCASE
S2 = 4.90x5.25=25.73 M2

LIFT
L1 = 4.40x5.25=23.10



UPPER GROUND STILT FLOOR

STILT AREA
P1X2 = 2X15.30X15.50=474.30
P2 = 3.00X5.00 =15.00
P3 = 5.00X10.25 =51.25
P4 = 6.30X3.70 =23.31
P5 = 10.10X6.55 =66.16
P6 = 9.00X5.25 =47.25
677.27 M2

RAMP
RA1 = 26.80x6.00=160.80
RA2 = 23.30x6.00=139.80
300.60 M2

EQUIP RM
EQ = 3.80x3.70=14.06
14.06 M2

STAIRCASE
S1 = 3.00x5.55=16.65
S2 = 4.90x5.25=25.73
42.38 M2

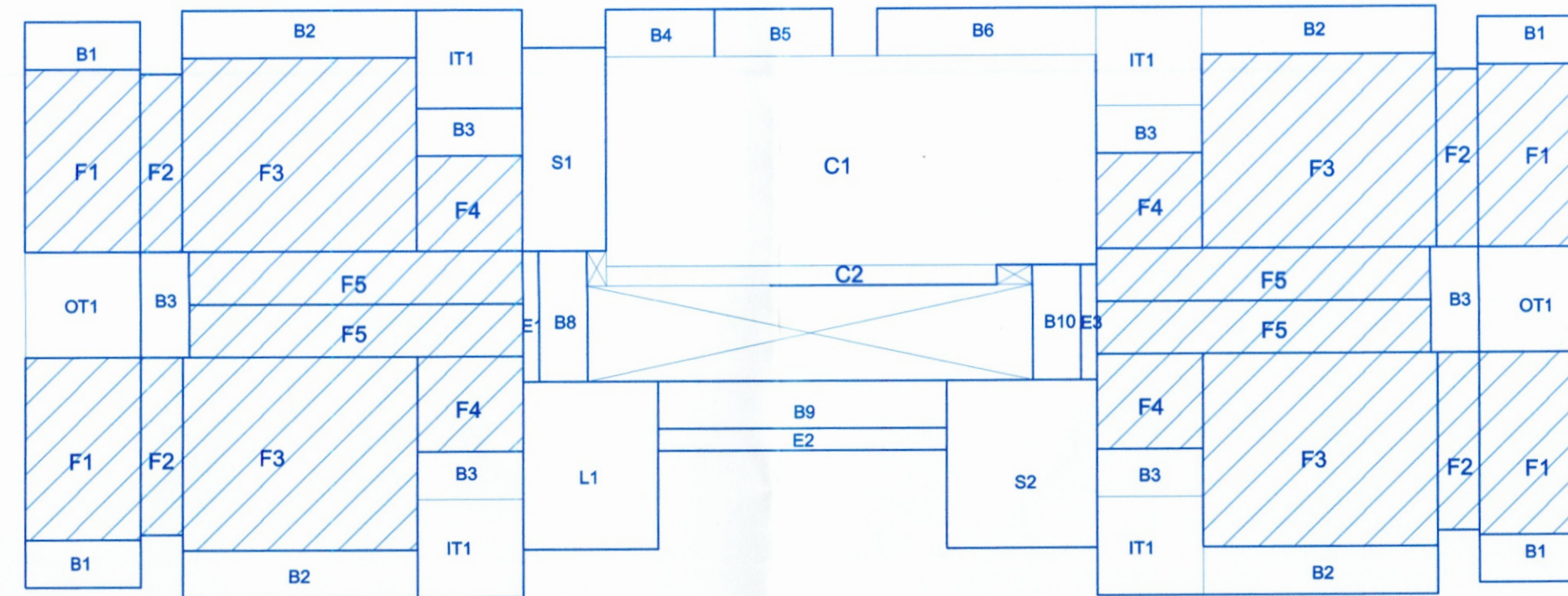
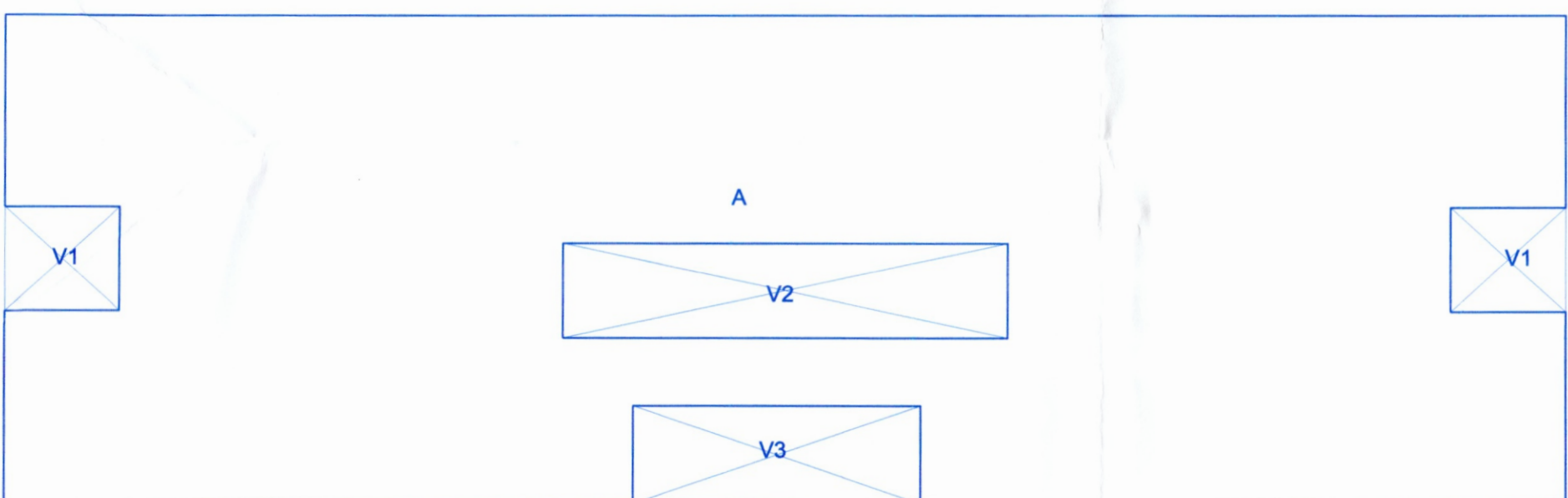
LIFT
L1 = 4.40x5.25=23.10

COVERED AREA

A = 48.90X15.50 =757.95 M2

DEDUCTIONS (UNSTORIED PORCH)
V1X2 = 2X3.30X3.60 =23.76
V2 = 13.90X3.00 =41.70
V3 = 9.00X3.10 =27.90
93.36 M2

COVERED AREA= 757.95-93.36 = 664.59 M2



FIRST FLOOR

FLOOR AREA
F1 X 4 = 4X3.60x5.75=82.80
F2 X 4 = 4X1.30x5.60=29.12
F3 X 4 = 4X7.30x6.10=178.12
F4 X 4 = 4X3.30x3.00=39.60
F5 X 4 = 4X10.40x1.65=68.64
398.28 M2

BALCONY
B1 X 4 = 4X3.60x1.50=21.60
B2 X 4 = 4X7.30x1.50=43.80
B3 X 6 = 6X3.30x1.50=29.70
B4 = 3.40x1.50=5.10
B5 = 3.70x1.50=5.55
B6 = 6.80x1.50=10.20
B8 = 4.10x1.50=6.15
B9 = 9.00x1.50=13.50
B10 = 3.60x1.50=5.40
141.00 M2

STAIRCASE
S1 = 2.60X6.40=16.64
S2 = 4.70x5.30=24.91
41.55 M2

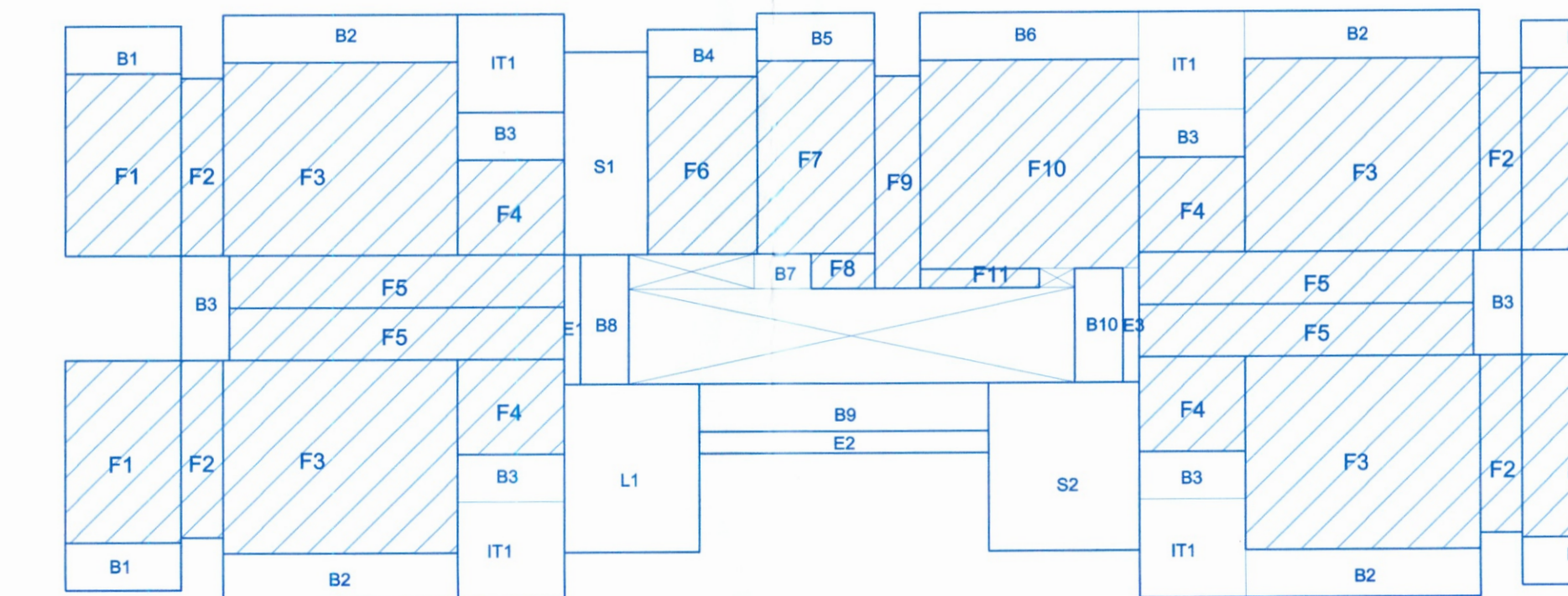
LIFT
L1 = 4.20x5.30=22.26

ENT FOYER
E1 = 4.10x0.50=2.05
E2 = 9.00x0.70=6.30
E3 = 3.60x0.50=1.80
10.15 M2

CLUBHOUSE
C1 = 15.30x6.60=100.98
C2 = 12.20x0.60=7.32
108.30 M2

INTERMEDIATE TERRACE
IT1X4 = 4X3.30x3.00=39.60
39.60 M2

OPEN TERRACE
OT1X2 = 2X3.30x3.60=23.76
23.76 M2



SECOND,THIRD,FOURTH,FIFTH FLOOR

FLOOR AREA
F1 X 4 = 4X3.60x5.75=82.80
F2 X 4 = 4X1.30x5.60=29.12
F3 X 4 = 4X7.30x6.10=178.12
F4 X 4 = 4X3.30x3.00=39.60
F5 X 4 = 4X10.40x1.65=68.64
F6 = 3.40x5.60=19.04
F7 = 3.70x 6.10=22.57
F8 = 2.00x1.10=2.20
F9 = 1.40x6.70=9.38
F10 = 6.80x6.60=44.88
F11 = 3.70x0.60=2.22
498.57 M2

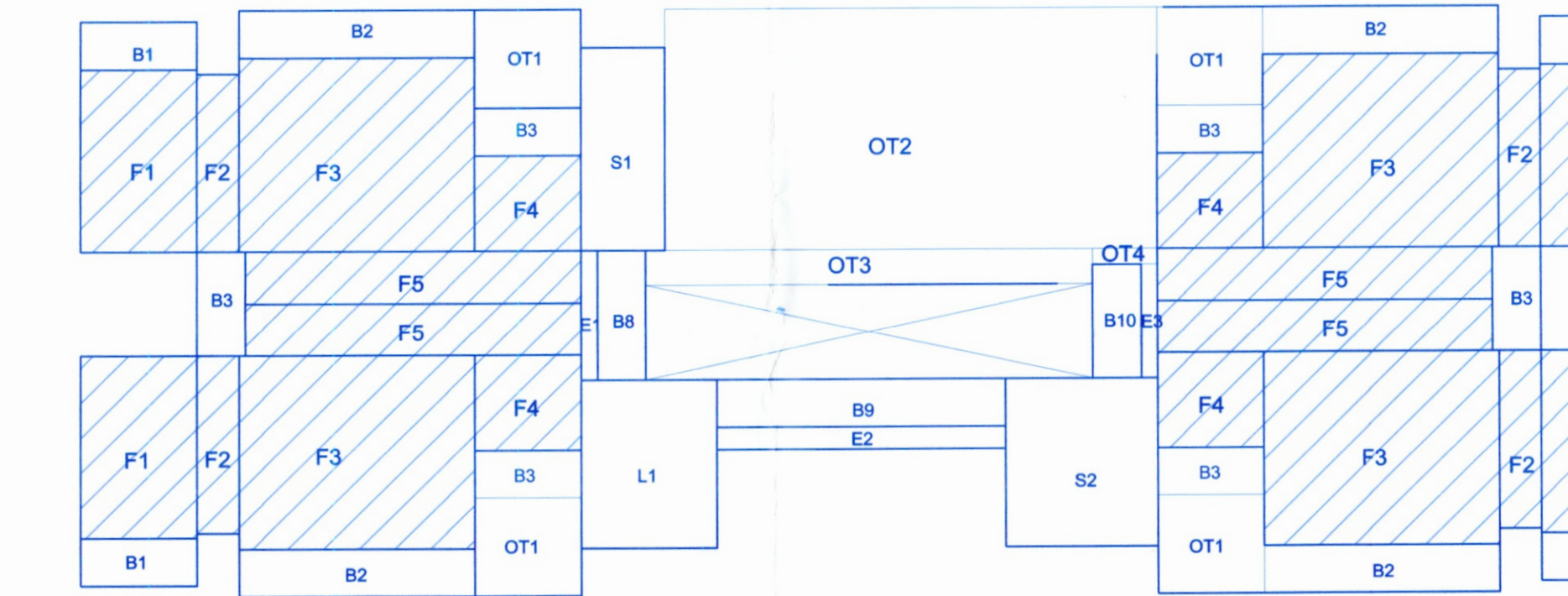
BALCONY
B1 X 4 = 4X3.60x1.50=21.60
B2 X 4 = 4X7.30x1.50=43.80
B3 X 6 = 6X3.30x1.50=29.70
B4 = 3.40x1.50=5.10
B5 = 3.70x1.50=5.55
B6 = 6.80x1.50=10.20
B7 = 1.80x1.10=1.98
B8 = 4.10x1.50=6.15
B9 = 9.00x1.50=13.50
B10 = 3.60x1.50=5.40
142.98 M2

STAIRCASE
S1 = 2.60X6.40=16.64
S2 = 4.70x5.30=24.91
41.55 M2

LIFT
L1 = 4.20x5.30=22.26

ENT FOYER
E1 = 4.10x0.50=2.05
E2 = 9.00x0.70=6.30
E3 = 3.60x0.50=1.80
10.15 M2

INTERMEDIATE TERRACE ON THIRD,FIFTH FLOOR
IT1X4 = 4X3.30x3.00=39.60
39.60 M2



SIXTH,SEVENTH,EIGHTH FLOOR

FLOOR AREA
F1 X 4 = 4X3.60x5.75=82.80
F2 X 4 = 4X1.30x5.60=29.12
F3 X 4 = 4X7.30x6.10=178.12
F4 X 4 = 4X3.30x3.00=39.60
F5 X 4 = 4X10.40x1.65=68.64
398.28 M2

BALCONY
B1 X 4 = 4X3.60x1.50=21.60
B2 X 4 = 4X7.30x1.50=43.80
B3 X 6 = 6X3.30x1.50=29.70
B8 = 4.10x1.50=6.15
B9 = 9.00x1.50=13.50
B10 = 3.60x1.50=5.40
120.15 M2

STAIRCASE
S1 = 2.60X6.40=16.64
S2 = 4.70x5.30=24.91
41.55 M2

LIFT
L1 = 4.20x5.30=22.26

ENT FOYER
E1 = 4.10x0.50=2.05
E2 = 9.00x0.70=6.30
E3 = 3.60x0.50=1.80
10.15 M2

OPEN TERRACE ON SIXTH FLOOR
OT2 = 15.30x7.80=116.28
OT3 = 13.90x 1.10=15.29
OT4 = 2.00x0.50=1.00
132.57 M2

OPEN TERRACE ON SEVENTH FLOOR
OT1X4 = 4X3.30x3.10=40.92
40.92 M2

Revised Plan
License issued under No. 16/2023-2024
Dated 12/06/2024
Subject to the conditions stipulated therein
[Signature]
CHIEF OFFICER,
MARGAO MUNICIPAL COUNCIL

[Signature]
Municipal Engineer
Margao Municipal Council

REVISED PLANS

OWNER : CITYSCAPE DEVELOPERS	
PROJECT : PROPOSED RESIDENTIAL BUILDING, CLUBHOUSE, SECURITY CABIN,COMP/WALL & AMALGAMATION OF PLOT AT GOGOL-MARGAO	
DATE : 01-9-2023	P.T.S. NO. 121 /CHALTA NO. 1 PLOT NOS F5,F6,F7,F8
SCALE : 1:100	DRG. NO- 755 / 09
JOB NO-2454	ENGINEER: <i>[Signature]</i> UDAY SAWANT B.E.(CIVIL) Reg. No. ER/0022/2010
OWNER:	<i>[Signature]</i> SAWANT & ASSOCIATES ARCHITECTS, ENGINEERS INTERIOR DESIGNERS MARGAO, ARCADE, 1ST FLOOR MALHEAT, MARGAO -GOA. PHONE: 98222 87888