



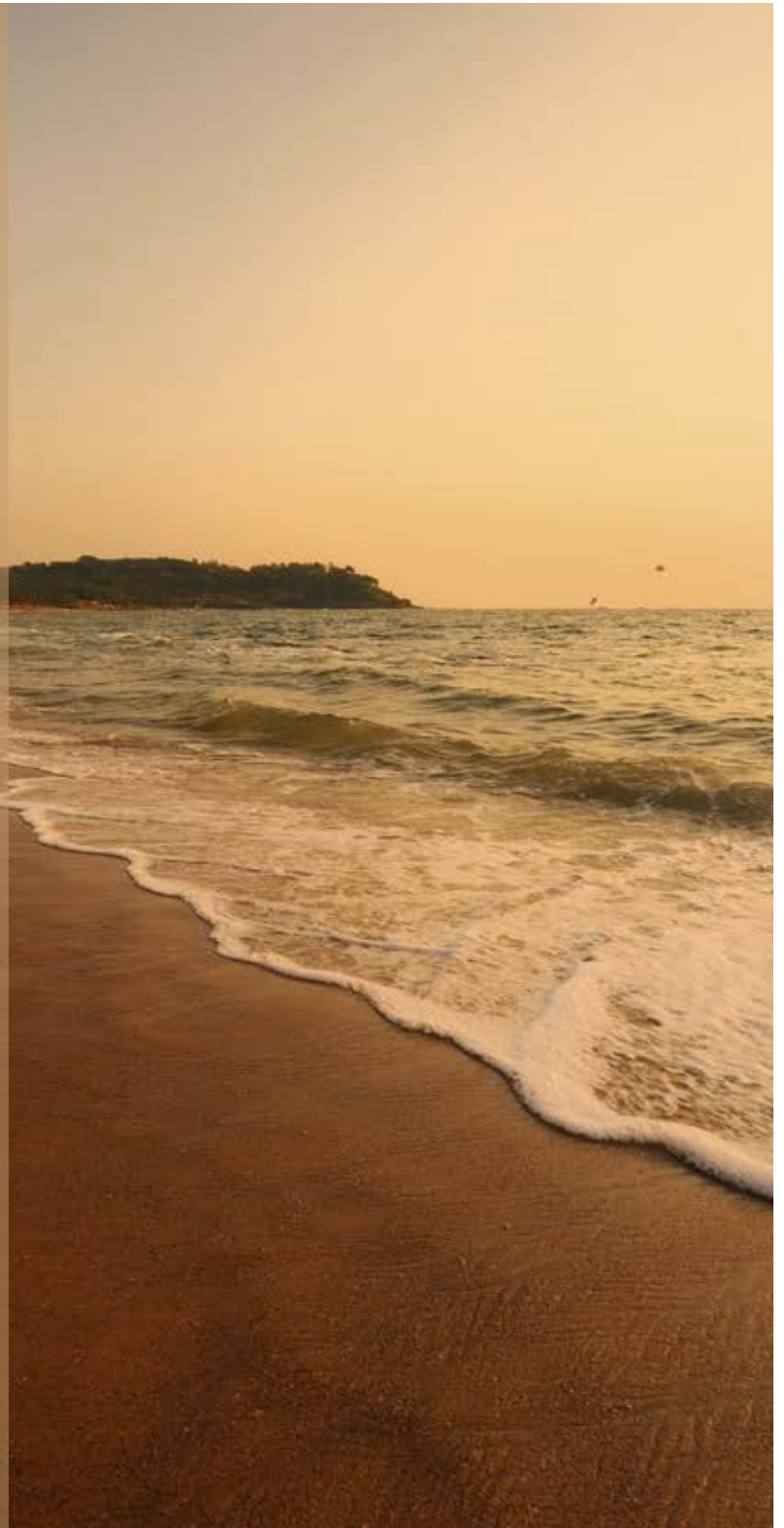
*Verde*

## Goa

Nestled along India's western coast, this tiny state is known for its carpeted fields and palmed shoreline. With almost 2.5 million domestic and international travelers arriving annually, Goa is fast becoming home to settlers from across the country and beyond.

Established industrial hubs and trade opportunities across the state provide its residents ample work and business potential along with a perfect work-life balance.

Evenings and weekends transform into quality family time and quiet retreats as one recharges with Goa's many offerings of serene beaches, scenic hills, lush forests, diverse wildlife, vibrant cuisine and a warm friendly folk.





## Varca

On the five-star beach belt of South Goa lies the vibrant village of varca, with a 17th century church, a bustling market place and close-knit sense of community.

Lining the western coast between the villages of Mobor to its south and Benaulim to its North, Varca offers the quaint seclusion of Goan village life with all the amenities of a thriving modern town offers.

A quintessential village with charming architecture, palm lined streets, white sand beaches and a vibrant cultural ethos, church fetes, local plays, family owned eateries, wood fired bakeries and weekend markets keep things a buzz all year round.





## Verde

Lush paddy fields, dense greenery and a feel of calm mark the surroundings of Verde, a tropical haven of peace and seclusion.

A heavy tree cover, creative landscaping, multiple water bodies and natural views in every direction seamlessly blend over 120 units in the project, comprising of an assortment of luxury villas, row houses, apartments and pent houses, giving each a unique design adaptation.

Verde is built with the highest standard of quality to ensure that the houses we build last a lifetime. Finished with a mediterranean touch the colourful ensemble of houses is an ideal holiday home investment.



## Amenities

Swimming Pools

Gym

Library

Club House

Pool/Snooker Tables

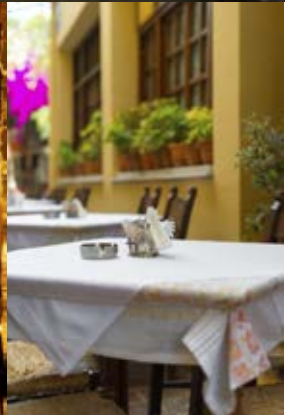
Recreational Areas

Spa

Cafe

Children's Park

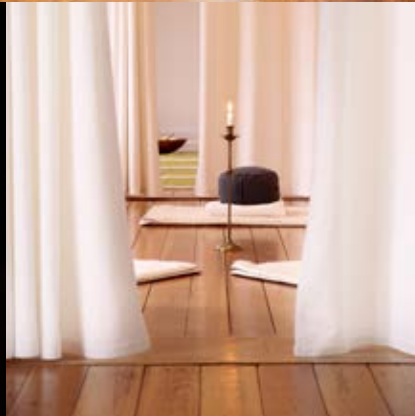
Walking Track





## Facilities

Rent Back  
Convenience Store  
24 Hours Security  
Maintenance  
Power Backup  
Sewage Treatment  
Solid Waste Management  
Senior Citizen Friendly  
Reserved Parking  
Solar Water Heating

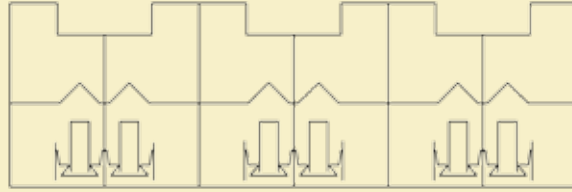


# Site and Unit Layouts





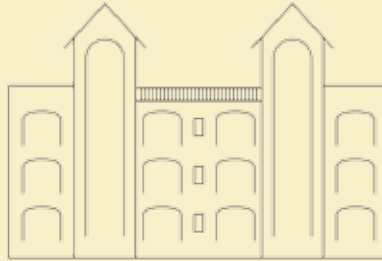
• Total Land area = 6 acres



• Row House

Type 1 & 2 - Blocks M, O, Q, R, S, T, U, W  
Type 3 - Block G

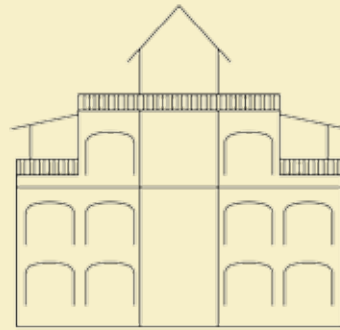
• Club House = 750 sq.m.



• Apartment

3BHK - Block P  
Type 2 & 3 - Block L  
Type 4 - Block P

• Open Space = 2500 sq.m.

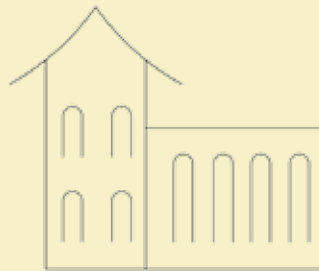


• Kids Play area = 300 sq.m.

• Apartment

Type 1 - Blocks A, B, C, D, E, F

• Walking track = 600m



• Villa

Blocks H, I, J, K, V, X, Y, Z

• Commercial space = 750 sq.m.



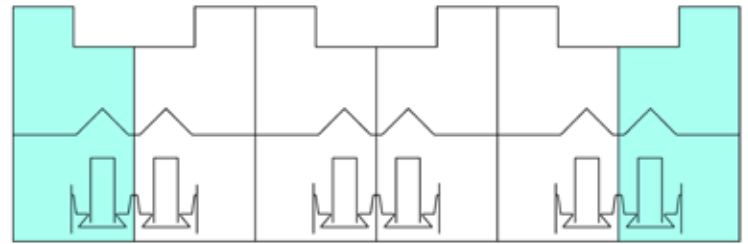
• Swimming pools = 5.0m x 20.0m each.

• Club House

Block N

# Row House Type 1

Row House with 3 bedrooms, 3 bathrooms (2 ensuite), living/dining room and kitchen. Also includes a terrace, lounge, private garden space at the back and a private car park.



GROUND FLOOR PLAN



FIRST FLOOR PLAN



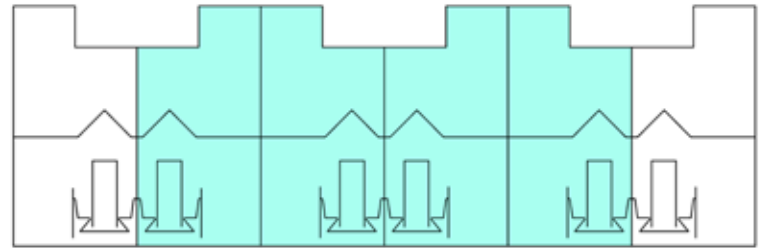
TERRACE FLOOR PLAN

CARPET AREA  
125.00 Sq.m.

SALEABLE AREA  
165.00 sq.m

# Row House Type 2

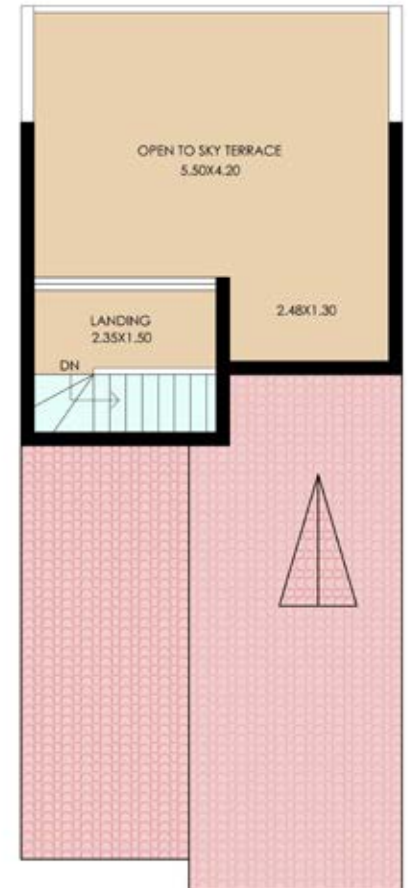
Row House with 3 bedrooms, 3 bathrooms (2 ensuite), living/dining room and kitchen. Also includes a terrace, lounge, private garden space at the back and a private car park.



GROUND FLOOR PLAN



FIRST FLOOR PLAN



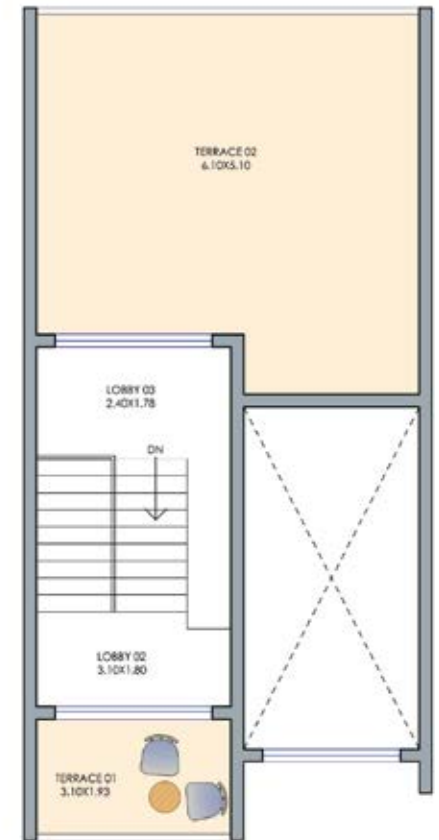
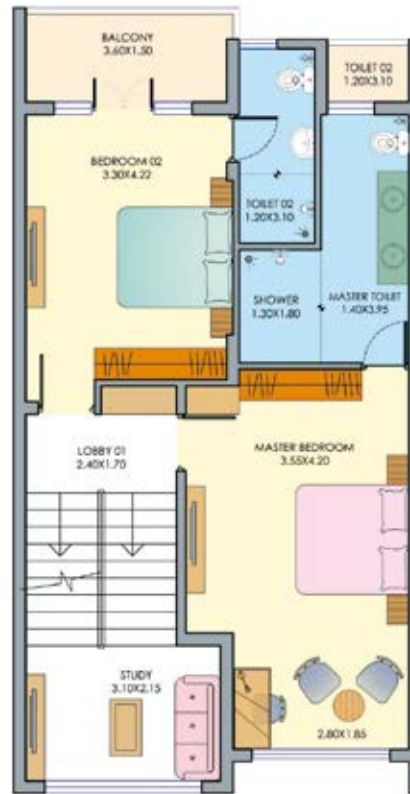
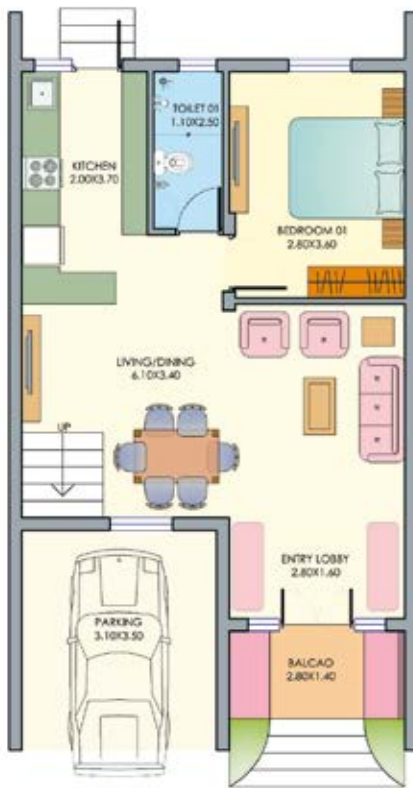
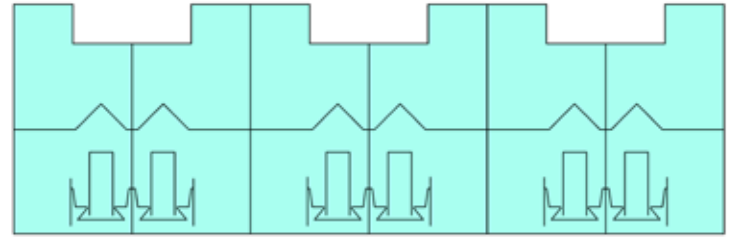
TERRACE FLOOR PLAN

CARPET AREA  
107.00 Sq.m.

SALEABLE AREA  
150.00 sq.m

# Row House Type 3

Row House with 3 bedrooms, 3 bathrooms (2 ensuite), living/dining room and kitchen. Also includes a terrace, lounge, private garden space at the back and a private car park.



GROUND FLOOR PLAN

FIRST FLOOR PLAN

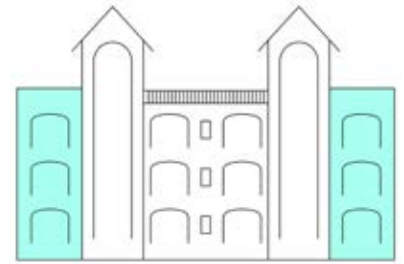
TERRACE FLOOR PLAN

CARPET AREA  
136.00 Sq.m.

SALEABLE AREA  
177.00 sq.m

# Apartment 3 BHK

Apartment with 3 bedrooms, 3 bathrooms (2 ensuite), living/dining room and kitchen. All living areas are externally ventilated. Also includes a car park.

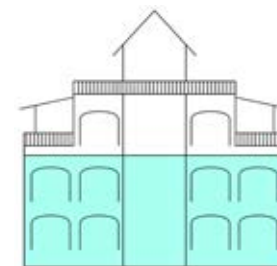


CARPET AREA  
107.00 Sq.m.

SALEABLE AREA  
126.00 sq.m

# Apartment Type 1

Apartment with 2 bedrooms, 2 bathrooms (1 ensuite), living/dining room and kitchen. All living areas are externally ventilated. Also includes a car park.

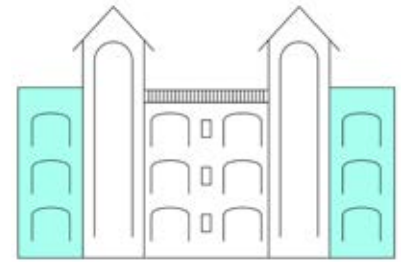


CARPET AREA  
81.00 Sq.m.

SALEABLE AREA  
100.00 sq.m

# Apartment Type 2

Apartment with 2 bedrooms, 2 bathrooms (1 ensuite), living/dining room and kitchen. All living areas are externally ventilated. Also includes a car park.

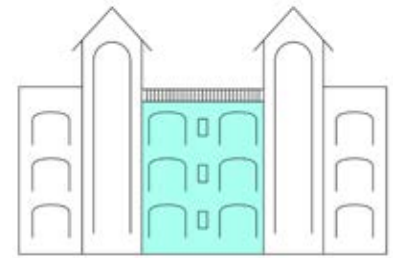


CARPET AREA  
78.00 Sq.m.

SALEABLE AREA  
96.00 sq.m

# Apartment Type 3

Apartment with 2 bedrooms, 2 bathrooms (1 ensuite), living/dining room and kitchen. All living areas are externally ventilated. Also includes a car park.



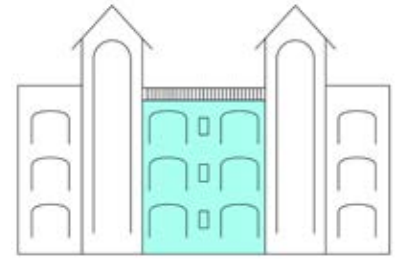
CARPET AREA  
78.00 Sq.m.

SALEABLE AREA  
96.00 sq.m



# Apartment Type 4

Apartment with 2 bedrooms, 2 bathrooms (1 ensuite), living/dining room and kitchen. All living areas are externally ventilated. Also includes a car park.



CARPET AREA  
77.00 Sq.m.

SALEABLE AREA  
92.50 Sq.m.

# Penthouse

Penthouse with 3 bedrooms, 3 bathrooms (3 ensuite), living/dining room and kitchen. All living areas are externally ventilated. Also includes a car park.

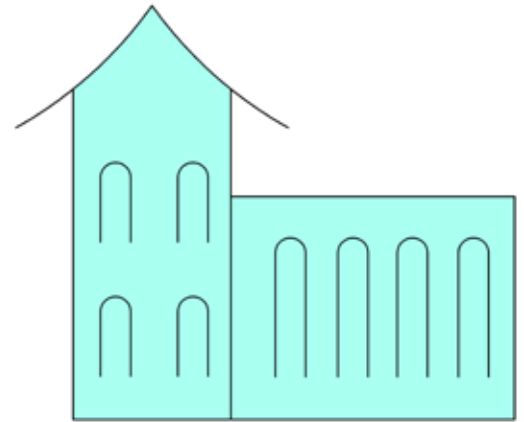


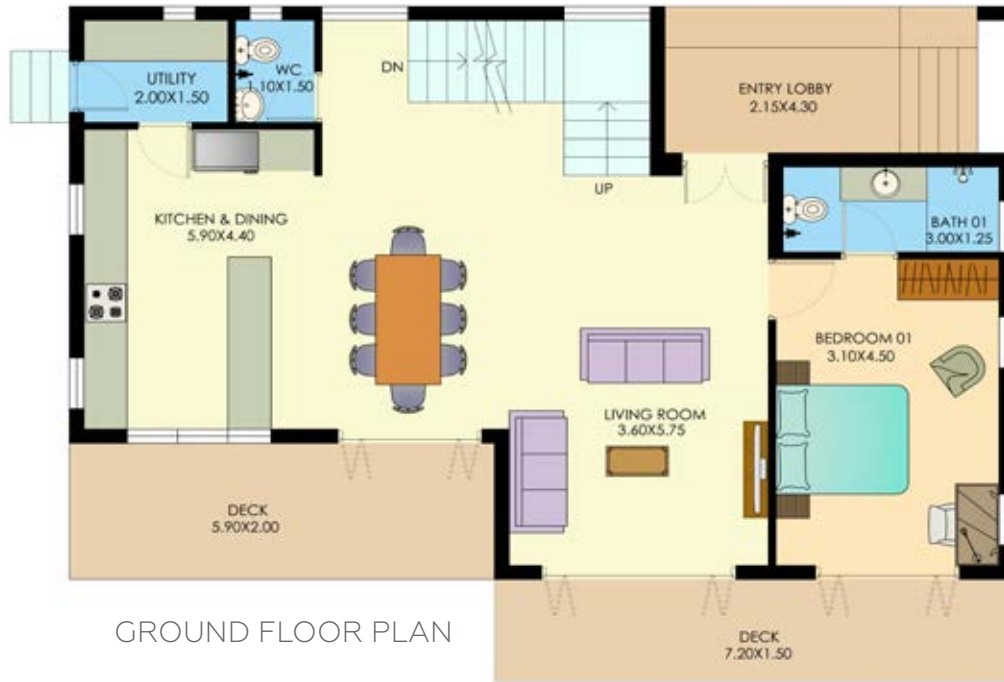
CARPET AREA  
132.00 Sq.m.

SALEABLE AREA  
196.00 sq.m

# Villa

At Verde we have designed a sub-gated area with unobstructed paddy field view. These area hosts five uber-luxurious independent villas, designed with great detail. Ideal for those looking for extra independent space and privacy with the added benefits of gated security and lifestyle . All villas have a 4 bedroom layout, having 4 bathrooms (all on-suite), living/dining room, study, family lounge, kitchen, terrace, private garden space at the back and two private car parks.





GROUND FLOOR PLAN



FIRST FLOOR PLAN



SECOND FLOOR PLAN

CARPET AREA  
215.00 Sq.m.

SALEABLE AREA  
285.00 sq.m





## SPECIFICATION SHEET - VERDE, VARCA - GOA

AREA	WALLS & CEILING	FLOORING	DOORS & WINDOWS
STRUCTURE	RCC Structure and solid walls		
LIVING ROOM/ DINING ROOM	Wall putti with acrylic emulsion paint	Porcelain/ Ceramic floor tiles	Solid wood shutters and frames with polish
BEDROOMS	Wall putti with acrylic emulsion paint	Porcelain/ Ceramic floor tiles	Solid wood shutters and frames with polish
KITCHEN	Wall putti with acrylic emulsion paint	Porcelain/ Ceramic floor tiles	Solid wood shutters and frames with polish
BALCONIES TERRACE	External Emulsion/ Granite paint	Porcelain/ Ceramic antiskid floor tiles	Solid wood shutters and frames with polish
BATHROOMS	Porcelain glazes tile dado	Porcelian/ Ceramic antiskid floor tiles	Solid doors & Alluminium powder coated windows
ELECTRICAL	Concealed copper wiring with modular plate switches		
PLUMBING	Concealed upvc piping with brass fixtures & fittings of Grohe or equivalent brand		
FACILITIES	Gymnasium, massage rooms, infinity pool, convenience store, housekeeping services, childrens play area		
SECURITY	CCTV, 24 hour round-the-clock security		



## Rent Back

VERDE by Aansav would be the first fully serviced apartment style resort of this size in South Goa. Designed to function like a resort the complex will have in-built infrastructure and support staff to run the residences as temporary rental apartments and villas. With a host of resort facilities and convenience of apartments, Verde would be an ideal choice for holiday makers visiting Goa.

- Actively advertise on leading travel website and tourist forums for optimum exposure.
- Revenue sharing plan would be offered to all clients who would like to avail of the facility.
- Would allow for large families and guests with children, pets etc to travel together at a fraction of the cost.
- With simple guidelines owners would ensure that their guests and homes are well looked after and maintained.



- Amenities such as laundry, vehicles and pick-ups, concierge, house-keeping, restaurants and breakfast cafe, beach ferry are included.
- 24-hour security and power backup for essential services will be provided.
- Your guests can enjoy the comfort of living at home with the luxury and perks of a resort.
- Airport pickup/drop, beach shuttles, rental cycles, bikes and cars shall be provided.



# AANSAV

## Aansav Group

Incorporated in 2005, Aansav Group has gained recognition as a quality-conscious business entity, operating in the core areas of Contracting, Manufacturing, Infrastructure and Realty. The group managed by brothers **Mr. Aatish Babani** and **Mr. Siddharth Babani** has its own competent in-house team of managers, civil engineers, architects, interior designers and contractors, focussed on customer experience and an on time quality build.

The Group currently is developing South Goa's largest project called TREMONTE, located in Madgaon city the district head quaters of South Goa. Tremonte is a residential development of over 450 units. With Verde and Tremonte AANSAV would be one of the largest developers in South Goa.





#### PROJECT ADDRESS :

Aansav Verde  
Langottem Varca  
Salcete Goa  
INDIA 403721

#### REACH US AT :

Aansav Realty & Infrastructure Pvt. Ltd.  
106 WDC Enclave,  
Mabai Hotel Complex,  
Near Grace Church,  
Margao Goa  
INDIA 403601

P : +91 832 2733505/06/07  
+91 832 2733086/87/88

info@ansav.com  
www.ansav.com



Aansav

#### DISCLAIMER

Brand impressions, floor plans, layout plans, specifications, images, names, drawings, perspective, models, graphics, logos, icons and other details contained herein are only indicative and the Developers/Promoters/Owners reserves the right to change all or any of them. The amenities and features of the project listed in this brochure are subject to change/deletion at the discretion of the Developers/Promoters/Owners and/or subject to changes on the directions issued by the competent authorities.

The content provided in this brochure is intended for informational purposes only and is not intended to constitute as an offer or solicitation. An artist's impression of the proposed project/ layout is shown here and is indicative of how the unit/apartment can be used. No furniture, landscape, amenities or accessories shown in the visuals are provided with the unit/apartment.

This brochure does not constitute as an offer and/or contract of any type between the Developers/Promoters/Owners and the Recipient. Any purchase of a unit/apartment of the Project shall be governed solely by the terms and conditions of the Application/Agreement of Sale executed between the Purchaser and the Developers/Owners/Promoters and no details/information mentioned in this brochure shall in any way govern or be considered as the terms and conditions of such a sale.

All units/apartments about which information is provided herein are subject to prior sale. Prospective purchasers must visit our sales office to purchase a unit/apartment. Despite our best efforts to provide accurate information; it is not possible to ensure that all information is correct or up to date.