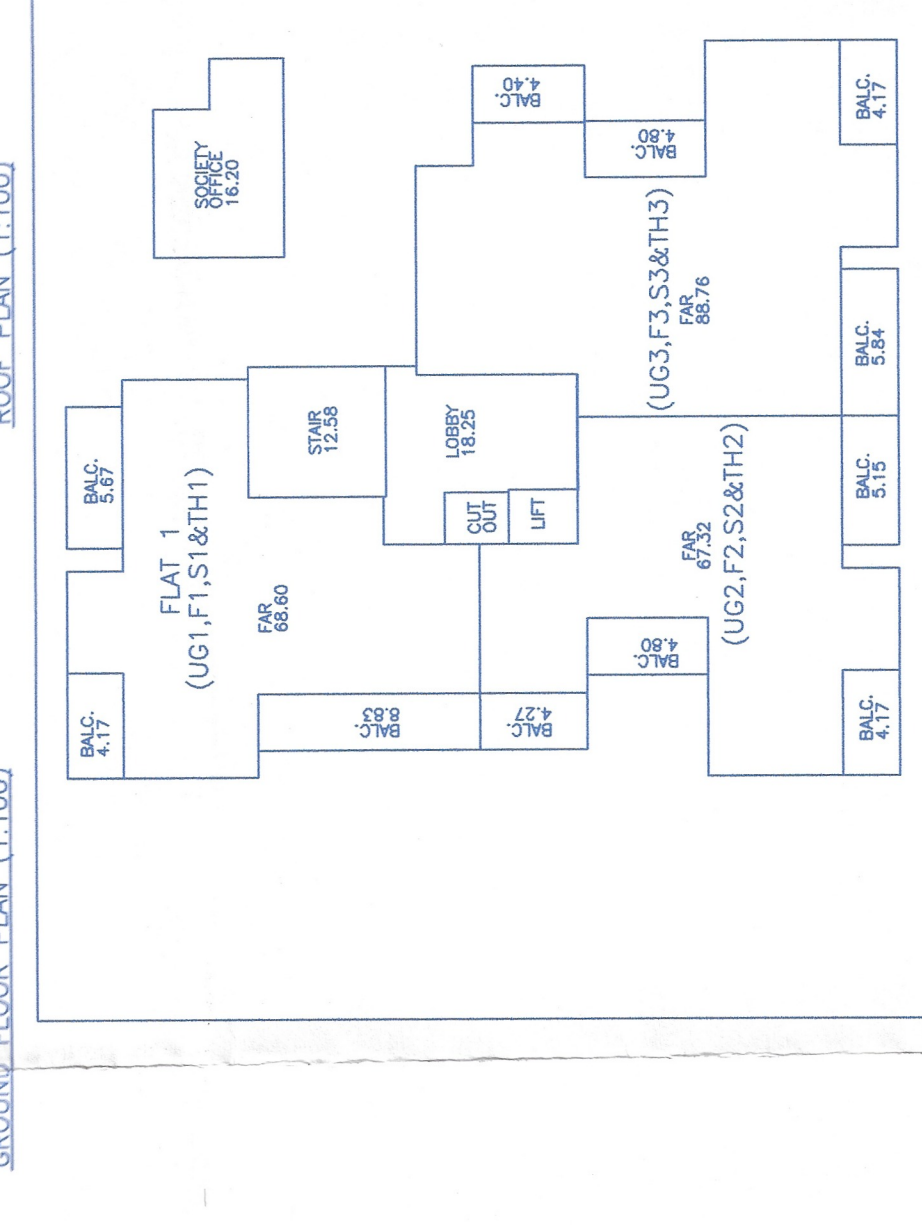
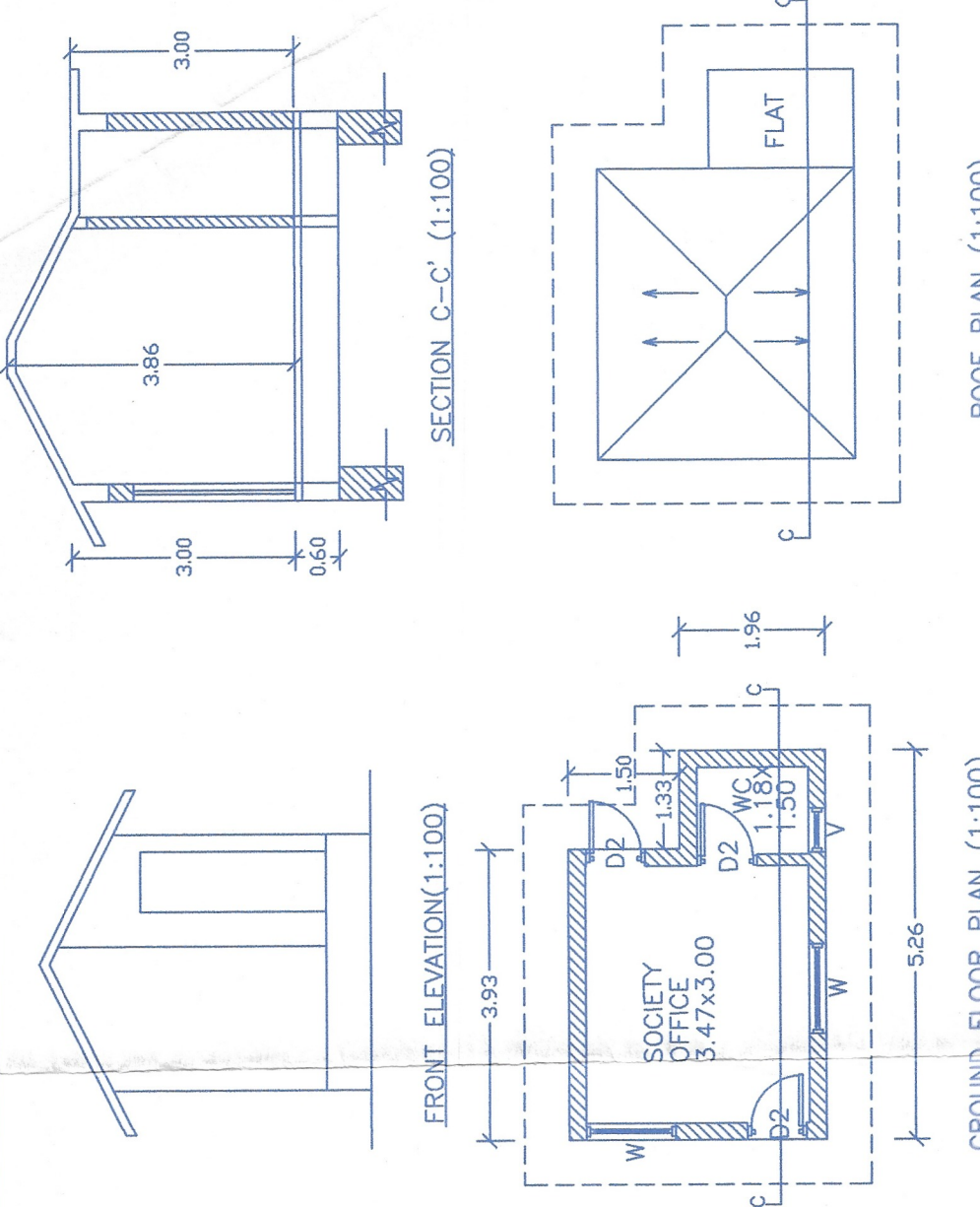


Please check the drawing with the following details:
 2022/1979
 29/06/2022



FLOOR	FAR	BALCONY	STAIRS	LOBBY	TOTAL
GROUND	228.94	56.27	12.58	12.58	314.04
FIRST	228.94	56.27	12.58	12.58	314.04
SECOND	228.94	56.27	12.58	12.58	314.04
THIRD	228.94	56.27	12.58	12.58	314.04
TOTAL	907.76	225.08	62.90	73.00	1268.74
SOCIETY OFFICE					16.20
GRAND TOTAL					1284.94

AREA STATEMENT:
 1. TOTAL FLOOR AREA=907.76 SQM
 2. TOTAL FLOOR AREA=907.76 SQM
 3. TOTAL FLOOR AREA=907.76 SQM
 4. TOTAL FLOOR AREA=907.76 SQM
 5. TOTAL FLOOR AREA=907.76 SQM
 6. TOTAL FLOOR AREA=907.76 SQM
 7. TOTAL FLOOR AREA=907.76 SQM
 8. TOTAL FLOOR AREA=907.76 SQM
 9. TOTAL FLOOR AREA=907.76 SQM
 10. TOTAL FLOOR AREA=907.76 SQM
 11. TOTAL FLOOR AREA=907.76 SQM
 12. TOTAL FLOOR AREA=907.76 SQM
 13. TOTAL FLOOR AREA=907.76 SQM
 14. TOTAL FLOOR AREA=907.76 SQM
 15. TOTAL FLOOR AREA=907.76 SQM
 16. TOTAL FLOOR AREA=907.76 SQM
 17. TOTAL FLOOR AREA=907.76 SQM
 18. TOTAL FLOOR AREA=907.76 SQM
 19. TOTAL FLOOR AREA=907.76 SQM
 20. TOTAL FLOOR AREA=907.76 SQM
 21. TOTAL FLOOR AREA=907.76 SQM
 22. TOTAL FLOOR AREA=907.76 SQM
 23. TOTAL FLOOR AREA=907.76 SQM
 24. TOTAL FLOOR AREA=907.76 SQM
 25. TOTAL FLOOR AREA=907.76 SQM
 26. TOTAL FLOOR AREA=907.76 SQM
 27. TOTAL FLOOR AREA=907.76 SQM
 28. TOTAL FLOOR AREA=907.76 SQM
 29. TOTAL FLOOR AREA=907.76 SQM
 30. TOTAL FLOOR AREA=907.76 SQM
 31. TOTAL FLOOR AREA=907.76 SQM
 32. TOTAL FLOOR AREA=907.76 SQM
 33. TOTAL FLOOR AREA=907.76 SQM
 34. TOTAL FLOOR AREA=907.76 SQM
 35. TOTAL FLOOR AREA=907.76 SQM
 36. TOTAL FLOOR AREA=907.76 SQM
 37. TOTAL FLOOR AREA=907.76 SQM
 38. TOTAL FLOOR AREA=907.76 SQM
 39. TOTAL FLOOR AREA=907.76 SQM
 40. TOTAL FLOOR AREA=907.76 SQM
 41. TOTAL FLOOR AREA=907.76 SQM
 42. TOTAL FLOOR AREA=907.76 SQM
 43. TOTAL FLOOR AREA=907.76 SQM
 44. TOTAL FLOOR AREA=907.76 SQM
 45. TOTAL FLOOR AREA=907.76 SQM
 46. TOTAL FLOOR AREA=907.76 SQM
 47. TOTAL FLOOR AREA=907.76 SQM
 48. TOTAL FLOOR AREA=907.76 SQM
 49. TOTAL FLOOR AREA=907.76 SQM
 50. TOTAL FLOOR AREA=907.76 SQM
 51. TOTAL FLOOR AREA=907.76 SQM
 52. TOTAL FLOOR AREA=907.76 SQM
 53. TOTAL FLOOR AREA=907.76 SQM
 54. TOTAL FLOOR AREA=907.76 SQM
 55. TOTAL FLOOR AREA=907.76 SQM
 56. TOTAL FLOOR AREA=907.76 SQM
 57. TOTAL FLOOR AREA=907.76 SQM
 58. TOTAL FLOOR AREA=907.76 SQM
 59. TOTAL FLOOR AREA=907.76 SQM
 60. TOTAL FLOOR AREA=907.76 SQM
 61. TOTAL FLOOR AREA=907.76 SQM
 62. TOTAL FLOOR AREA=907.76 SQM
 63. TOTAL FLOOR AREA=907.76 SQM
 64. TOTAL FLOOR AREA=907.76 SQM
 65. TOTAL FLOOR AREA=907.76 SQM
 66. TOTAL FLOOR AREA=907.76 SQM
 67. TOTAL FLOOR AREA=907.76 SQM
 68. TOTAL FLOOR AREA=907.76 SQM
 69. TOTAL FLOOR AREA=907.76 SQM
 70. TOTAL FLOOR AREA=907.76 SQM
 71. TOTAL FLOOR AREA=907.76 SQM
 72. TOTAL FLOOR AREA=907.76 SQM
 73. TOTAL FLOOR AREA=907.76 SQM
 74. TOTAL FLOOR AREA=907.76 SQM
 75. TOTAL FLOOR AREA=907.76 SQM
 76. TOTAL FLOOR AREA=907.76 SQM
 77. TOTAL FLOOR AREA=907.76 SQM
 78. TOTAL FLOOR AREA=907.76 SQM
 79. TOTAL FLOOR AREA=907.76 SQM
 80. TOTAL FLOOR AREA=907.76 SQM
 81. TOTAL FLOOR AREA=907.76 SQM
 82. TOTAL FLOOR AREA=907.76 SQM
 83. TOTAL FLOOR AREA=907.76 SQM
 84. TOTAL FLOOR AREA=907.76 SQM
 85. TOTAL FLOOR AREA=907.76 SQM
 86. TOTAL FLOOR AREA=907.76 SQM
 87. TOTAL FLOOR AREA=907.76 SQM
 88. TOTAL FLOOR AREA=907.76 SQM
 89. TOTAL FLOOR AREA=907.76 SQM
 90. TOTAL FLOOR AREA=907.76 SQM
 91. TOTAL FLOOR AREA=907.76 SQM
 92. TOTAL FLOOR AREA=907.76 SQM
 93. TOTAL FLOOR AREA=907.76 SQM
 94. TOTAL FLOOR AREA=907.76 SQM
 95. TOTAL FLOOR AREA=907.76 SQM
 96. TOTAL FLOOR AREA=907.76 SQM
 97. TOTAL FLOOR AREA=907.76 SQM
 98. TOTAL FLOOR AREA=907.76 SQM
 99. TOTAL FLOOR AREA=907.76 SQM
 100. TOTAL FLOOR AREA=907.76 SQM

THE CONSTRUCTION OF THIS PROJECT IS UNDER THE SUPERVISION OF
 M. NAVIN SHETYE ARCHITECT
 Reg. No. CA/98/2022
 DATED: 29/06/2022

PROPOSED DEVELOPMENT OF RESIDENTIAL BUILDING AND COMPOUND WALL WITH GATES AND STILT PARKING AT PLOT NO. 80/1-G (PART) OF RONDA VILLAGE, PONDRA COA.

M. NAVIN SHETYE ARCHITECT
 101, MIDC ROAD, PONDRA COA, PONDRA
 MARGAO, GOA INDIA. 403 701
 MO: 9796150146

